



Chipsmall Limited consists of a professional team with an average of over 10 year of expertise in the distribution of electronic components. Based in Hongkong, we have already established firm and mutual-benefit business relationships with customers from,Europe,America and south Asia,supplying obsolete and hard-to-find components to meet their specific needs.

With the principle of "Quality Parts,Customers Priority,Honest Operation,and Considerate Service",our business mainly focus on the distribution of electronic components. Line cards we deal with include Microchip,ALPS,ROHM,Xilinx,Pulse,ON,Everlight and Freescale. Main products comprise IC,Modules,Potentiometer,IC Socket,Relay,Connector.Our parts cover such applications as commercial,industrial, and automotives areas.

We are looking forward to setting up business relationship with you and hope to provide you with the best service and solution. Let us make a better world for our industry!



Contact us

Tel: +86-755-8981 8866 Fax: +86-755-8427 6832

Email & Skype: info@chipsmall.com Web: www.chipsmall.com

Address: A1208, Overseas Decoration Building, #122 Zhenhua RD., Futian, Shenzhen, China



DIGITALVIEW®



Product Information Guide v2
LCD CONTROLLERS

Table of Contents

REFERENCE

Section Introductions	2
About Digital View	3
Applications Overview	4
System Application Requirements	5
Custom Engineering Services	6
Online Resources - The Controller Solution Generator	7
Digital View Controller Comparison	8

PERFORMANCE + FLEXIBILITY CONTROLLERS

Model	ARGB	DVI	COMPOSITE	S-VIDEO	COMPONENT	HDMI	
AVP-1600			✓	✓			10
ALR-1400	✓	✓					12
DVS-1600	✓	✓	✓	✓			14
SP-1600	✓	✓	✓	✓	✓		16

HI-RESOLUTION CONTROLLERS

Model	ARGB	DVI	COMPOSITE	S-VIDEO	COMPONENT	HDMI	
SVX-1920	✓	✓	✓	✓	✓	✓	18
SVH-1920	✓	✓	✓	✓	✓		20
DVI-2560		✓					22

HARSH ENVIRONMENT CONTROLLERS

Model	ARGB	DVI	COMPOSITE	S-VIDEO	COMPONENT	HDMI	
HE-1920	✓	✓	✓	✓	✓		24
HE-1600	✓	✓	✓	✓	✓		26
HE-1400	✓	✓					28

ACCESSORIES

Introduction / System Network Solution Monitoring	30
Broadcast / Pro Video Signal Inputs + Sensors + Audio	31
OSD Control Buttons / User Interface	32
Power + Other Accessories	33
Panel Cable Reference Table	34

SOLID STATE MEDIA PLAYERS

Media Systems Overview	36
ViewStream	37
Networkable Players	38
Video Flyers	39

Using The Guide

Performance + Flexibility

The core of our LCD controller family, supporting a wide range of inputs and resolutions upto UXGA, the Performance + Flexibility products include the ALR-1400, the AVP-1600, DVS-1600 & SP-1600. The ALR offers DVI & ARGB only, the AVP offers Composite & S-Video only, the DVS offers a combination of both, whilst the SP-1600 adds Component input to the mix. The products support multiple panel timings and select between different displays with onboard jumper settings. They all support RS-232 OSD menu control and are offered with 3 year warranty.

Hi-Resolution Controllers

The high resolution DVI-2560, SVH-1920 and SVX-1920 not only support resolutions upto WQXGA (2560x1600) - making them suitable for 1080P HD requirements - but they are also packed with high end display control features that enable a range of applications in the broadcast, medical, industrial and military sectors. These include control features such as image flip, freeze & zoom functions, text overlay, onboard ethernet, 10 bit panel support - and with extension boards HD-SDI, 3G input and 120Hz panel refresh. The products are offered with a 3 year warranty.

Harsh Environment Controllers

Designed for use in the very toughest of industrial and military environments - Digital View produces a parallel range of Harsh Environment (HE) controllers. The HE-1400, HE-1600 & HE-1920 mirror all the features of the standard controller product range, but offer the additional features of -40 to +80 degrees C operating temperature, conformal coatings and vibration resistance.

Controller Accessories

Digital View provides a comprehensive range of accessories to complement our controllers. We provide solutions to enhance user interface, aid in remote problem solving, enable system differentiation and customization. Our boards are just one component in a kit of parts that Digital View supplies to ensure that you get the most from your chosen LCD panel and deliver a premium set of features for your display product.

Solid State Media Players

Alongside our core LCD interface product range - Digital View also supplies a range of commercial grade solid state media players. These media player products are used to deliver reliable and robust digital video playback in digital signage, retail media, digital merchandising, way finding and museum applications. The products are built on the same industrial component and high feature-set principles that underpin the Digital View LCD controller range.

These fanless media players support MPEG, DivX, WMV & AVI media file formats upto 1080P/60 HD output. They offer USB content update, interactivity, RS-232 control, scheduled media playback and are supplied with a free content management software - 'DV-Studio'. The top-of-the-range RP-500 player also offers a turnkey networking solution for digital signage applications.

The media players are supplied as OEM boards - for integrators to build their own digital media solutions - as encased players (the Viewstream Range) and as integrated 'professional picture frame' combinations (the Videoflyer Range)

Digital View

Established in 1995, Digital View is the display industry's foremost supplier of interface controller solutions for application specific markets. Primarily addressing LCD displays, Digital View controller boards and accessories enable the use of graphic type LCD's for both new and innovative products as well as legacy systems. Global sales are supported by regional offices in America, Europe, and Asia underpinned by quality and service oriented technical support, operations, engineering, and supply chain.

Our customers make incredible products addressing a diverse range of applications that include:

- Rugged / Industrial Displays
- Mobile Military Displays
- Avionics Systems – Rotor and Fixed Wing
- Video Broadcast / Studio Systems
- Marine Information and Entertainment Systems
- Retail and Outdoor Digital Signage

Why Digital View...

Take advantage of over 'hundreds of man years' of experience, with 13 years of consistent performance as a leading controller developer, manufacturer, and reliable company. Having pioneered the development of specialty LCD interface controllers, Digital View provides a highly skilled, passionate engineering team with customization and support services, including a wide range of accessories to complement core products. Digital View:

Provides the engineering expertise and technological bridge to the changes and future trends within the industry.

Brings cost effective products to market, so companies don't have to develop the expertise themselves while focusing on meeting their own goals.

Reduces time to market and increases ROI.

Tests the controller solution 100% on the Manufacturing line.

Meets MIL standards and UL, CUL, CE, TUV safety and compliance criteria for systems engineering.

Applications Overview

Digital View Controllers Meet Application Objectives

Digital View's comprehensive Controller range offers:

- High Resolution, Harsh Environment, or Performance + Flexibility categories
- Long-life cycle products
- High Mean Time Between Failure (MTBF) ratings
- Support for most common panels/inputs/resolutions
- Customizable to meet specific new or legacy requirements
- Remote display management and validation
- Accessories that enhance monitor design and functionality

Customer LCD Monitor Design Criteria

The following criteria will help you decide the controller to select (from lower to higher value):

1. Size of panel
2. Resolution of panel
3. Panel characteristics
4. Controls
5. Temperature/environmental specs
6. Advanced features
7. Product uniformity/consistency
8. Legacy support
9. Interchangeable across multiple platforms
10. High reliability/low support costs
11. Provides your enterprise a competitive advantage

The following Application Keywords may indicate a need for Digital View Controllers:

- | | |
|-----------------------|------------------------|
| • Legacy | • High Definition (HD) |
| • Sync-on-Green (SOG) | • Broadcast |
| • Camera | • Remote |
| • Exploratory | • Surveillance |
| • Widescreen | • Rugged |
| • SUN | • Monitor |
| • Video | • HDMI |
| • Harsh Environment | • Reliable |

System Application Requirements

To help define/recommend a complete LCD display solution with a Digital View Controller, please copy and use this checklist.

Application Requirements:

- | | | |
|--|-----------------------------------|--|
| <input type="checkbox"/> Indoor | <input type="checkbox"/> Outdoor | <input type="checkbox"/> Both |
| <input type="checkbox"/> Mobile/Vehicle | <input type="checkbox"/> Marine | <input type="checkbox"/> NEMA Rating: |
| <input type="checkbox"/> High Temp | <input type="checkbox"/> Low Temp | <input type="checkbox"/> Direct Sunlight |
| <input type="checkbox"/> NVIS (Night Vision) | | |

Panel Size / Orientation

Panel Size: _____ in

Resolution: _____ x _____

Portrait Landscape

Manufacturer: _____

Model: _____

Panel Characteristics:

Contrast: _____:1

Brightness _____ nits

Viewing Angle _____

Backlight Type:

CCFL LED Backlight

Backlight Driver Needed?

Yes No

Panel Input

TTL LVDS TMDS other

Signal Inputs:

- | | | | |
|---|------------------------------------|---------------------------------------|--|
| <input type="checkbox"/> DVI _____ | <input type="checkbox"/> VGA _____ | <input type="checkbox"/> HD-SDI _____ | <input type="checkbox"/> Composite _____ |
| <input type="checkbox"/> NTSC | <input type="checkbox"/> PAL | <input type="checkbox"/> SECAM | |
| <input type="checkbox"/> SD Component | <input type="checkbox"/> S-Video | <input type="checkbox"/> HD Component | <input type="checkbox"/> HDMI |
| <input type="checkbox"/> PIP (Picture-in-Picture) | <input type="checkbox"/> Audio | <input type="checkbox"/> Other _____ | |

Special Functions / Accessories:

- | | | |
|---|---|--|
| <input type="checkbox"/> Power Supply | <input type="checkbox"/> Panel Cable | <input type="checkbox"/> Display Management |
| <input type="checkbox"/> Ambient Light Sensor | <input type="checkbox"/> Temperature Sensor | <input type="checkbox"/> Remote Control <input type="checkbox"/> OSD Kit |

Will RS-232 Serial Protocol commands be used to manage display settings & operation (YES / NO)

***Note:** All Digital View Controllers support the following industry signals: Sync on Green, Separate H/V, Composite Sync, RS-170

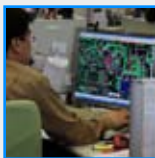
Digital View Custom Engineering Services

Contract Manufacturing & Specialist Monitor Solutions :

Digital View also undertakes the production of complete LCD monitor products on behalf of its customers. Whether this be the design of specialist customized monitor solutions, one-off large scale projects or ongoing regular production - Digital View combines its LCD expertise, its supply chain resources and its access to flexible production capacity to deliver a cost-effective quality LCD monitor manufacturing service.

The Contract Division helps strategic partners' growth by providing ODM/OEM solutions with high performance digital display systems to enable customers to deliver consistent and quality product. Digital View's full vertical integration offers design, tooling, plastics, metals, PCBs, assembly and test services. Undertaken in our Hong Kong facilities, Digital View is able to offer high quality, cost-competitive manufacturing across both small and large production runs.

- Batch Size range from single piece to thousands of units
- New product planning and project management
- Design Verification and validation
- Advanced components integration
- Dedicated Engineering Support Team
- Systematic Engineering change control
- Global supply chain and procurement reach



Specialist Monitor Solutions

Digital View's Specialist Monitor Solutions help strategic partners' growth by providing ODM/OEM solutions with high performance digital display systems to meet the specialist market needs. DV's full vertical integration offers design, tooling, plastics, metals, PCB, assembly, and test services. Unique services and strategic offerings include:

- Complex and diverse business volumes and product mix
- Batch size range from single piece to thousands of units
- New product planning and project management
- Design verification and validation
- Advanced components integration
- Dedicated Engineering Support Team
- Systematic engineering change control
- Global supply chain and procurement reach

Digital View Online Resources

Digital View's website contains valuable detailed product solution information.

The most frequently visited page on our website, the **Controller Solution Generator (CSG)** provides everything you need for optimal and complete Controller/Panel solutions. <http://www.digitalview.com/controllers/csg.php>

Controller Solution Generator

Find the right controller for your LCD with our easy to use solution generator below

Controller models
Innovative Features that enhance LCD projects

Start by selecting the LCD panel. [Show old controllers](#) [Note](#)

NLC NL12860BC20-02D 1280x800 or Select by LCD resolution

Model	Manufacturer	Diagonal Size	Resolution	Brightness	Contrast	Voltage
NL12860BC20-02D	NLC	12.1	1280x800	180	700	3.3

[Back](#)

Controller Solution	Part #	Resolution	Connection Diagram
ALR-1400	41710002X-3	1280x800	DOWNLOAD DIAGRAM

[Features](#)

Accessories for Controller ALR-1400 and Panel Model NL12860BC20-02D

Panel Cable	Part #	Item	Qty
426492200-3	Panel cable, 460mm	1	1

Inverter	Part #	Item	Qty
426051901-3	Inverter cable, 460mm	1	1
556023600	Green C&C Tech GH25A	1	1

Request a Quotation

Panel and Controller
NL12860BC20-02D Panel
ALR-1400 Controller

Accessories	Part #	Item	Qty
426492200-3	Panel cable, 460mm	1	1
426051901-3	Inverter cable, 460mm	1	1
556023600	Green C&C Tech GH25A	1	1

1 Select LCD Panel to be used. Results for compatible controllers are given.

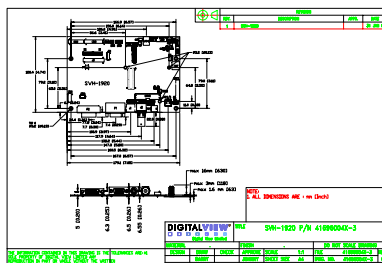
2 Select Controller to use.

3 A Controller solution is provided with Diagram, Panel Cable, Inverter, Inverter Cable, Accessories.



ProE (SLDPRT) Format Drawings

Useful for customers to do display system design and speed-up the volumetric analysis process. Located under "Features" tab at the "LCD Controller" section.



Mechanical Drawings

Drawings for specification reference on the Controllers, the specific Connectors, and various Accessories. Located under "Mechanical" tab at the "LCD Controller" section and the "Accessories" data sheets.

Digital View Controller Comparison

		Performance + Flexibility			
		AVP-1600	ALR-1400	DVS-1600	SP-1600
PANEL RESOLUTION	VGA (640 x 480)	√	√	√	√
	WVGA (800 x 480)	√	√	√	√
	SVGA (800 x 600)	√	√	√	√
	WSVGA (1024 x 600)	√	√	√	√
	XGA (1024 x 768)	√	√	√	√
	SXGA (1280 x 1024)	√	√	√	√
	WXGA (1366 x 768, 1280 x 768)	√	√	√	√
	SXGA+ (1400 x 1050)	√	√	√	√
	WXGA (1280 x 800, 1440 x 900)	√	√	√	√
	UXGA (1600x1200)	√		√	√
WUXGA (1920x1200)					
INPUTS	ARGB (15 Pin VGA)		√	√	√
	DVI Input		DVI-D	DVI-D	DVI-I
	PAL / NTSC / SECAM	√		√	√
	Composite Video Input	√ x4		√	√
	S-Video - Y/C	√ x2		√	√
	HD Component YPbPr				√
	SD Component Video YCbCr				√
	HD-SDI - SMPTE259M, 4.2.2				
	HDMI 1.3				
	3G HD-SDI 424M 4.4.4				
FEATURES	Image Up-Scaling	√	√	√	√
	Image Down-Scaling	√	√	√	√
	Multi-panel Support	√	√	√	√
	Infra-Red Remote Control	√		√	√
	Picture In Picture				
	Memory Buffer				√
	Sync On Green/Composite Sync		√	√	√
	DV RS-232 Serial Protocol	√	√	√	√
	Graphic Image Flip (H & V)				
	Text Overlay Function				
	Variable Aspect				√
	Freeze & Zoom Function				
	Programmable Hot Keys				√
	TTL Panel Interface	√	√	√	√
	LVDS Panel Interface	√	√	√	√
	Firmware Upgrade Via RS-232	√	√	√	√
	Input Power Range @ 12V	12v±5%	12v±5%	12v±5%	12v±5%
	Input Power Range @ 24V	24v ±5%	24v ±5%	24v ±5%	24v ±5%
	Operating Temperature (°C)	0-60°C	0-60°C	0-60°C	0-60°C
	Conformal Coating	Option	See HE-1400	Option	See HE-1600
Vibration Resistant	Option	See HE-1400	Option	See HE-1600	
3-Year Digital View Warranty	√	√	√	√	
ROHS Compliant	√	√	√	√	



AVP-1600



ALR-1400



DVS-1600



SP-1600



SVX-1920



SVH-1920



DVI-2560



HE-1920



HE-1600



HE-1400

Digital View Controller Comparison

		HIGH RESOLUTION			HARSH ENVIRONMENT		
		SVX-1920	SVH-1920	DVI-2560	HE-1920	HE-1600	HE-1400
PANEL RESOLUTION	VGA (640 x 480)	✓	✓		✓	✓	✓
	WVGA (800 x 480)	✓	✓		✓	✓	✓
	SVGA (800 x 600)	✓	✓		✓	✓	✓
	XGA (1024 x 768)	✓	✓		✓	✓	✓
	SXGA (1280 x 1024)	✓	✓		✓	✓	✓
	WXGA (1366 x 768)	✓	✓		✓	✓	✓
	SXGA+ (1400 x 1050)	✓	✓		✓	✓	✓
	WXGA (1280 x 800, 1440 x 900)	✓	✓		✓	✓	✓
	UXGA (1600x1200)	✓	✓		✓	✓	
	WUXGA (1920x1200)	✓	✓		✓		
WQXGA (2560 x 1600)			✓				
INPUTS	ARGB (15 Pin VGA)	✓	✓		✓	✓	✓
	DVI Input	DVI-D	DVI-D	DUAL DVI	DVI-D	DVI-I	DVI-D
	PAL / NTSC / SECAM	✓	✓		✓	✓	
	Composite Video Input	✓	✓		✓	✓	
	S-Video - Y/C	✓	✓		✓	✓	
	HD Component YPbPr	✓	✓		✓	✓	
	SD Component Video YCbCr	✓	✓		✓	✓	
	HD-SDI - SMPTE259M, 4.2.2	Option	Option		Option		
	HDMI 1.3	✓					
	3G HD-SDI 424M 4.4.4	Option					
FEATURES	Image Up-Scaling	✓	✓		✓	✓	✓
	Image Down-Scaling	✓	✓		✓	✓	✓
	Multi-panel Support	✓	✓	✓	✓	✓	✓
	Infra-Red Remote Control	✓	✓		✓	✓	
	Picture In Picture	✓	✓		✓		
	Memory Buffer	✓	✓		✓	✓	
	Sync On Green/Composite	✓	✓		✓	✓	✓
	DV RS-232 Serial Protocol	✓	✓		✓	✓	✓
	Graphic Image Flip (H & V)		✓		✓		
	Text Overlay Function	✓	✓		✓		
	Variable Aspect	✓	✓		✓	✓	
	Freeze & Zoom Function	✓	✓		✓		
	Programmable Hot Keys	✓	✓		✓	✓	
	TTL Panel Interface		✓		✓	✓	✓
	LVDS Panel Interface	✓	✓	✓	✓	✓	✓
	BIOS Upgrade Via RS-232	✓	✓		✓	✓	✓
	Input Power Range @ 12V	12v±5%	12v±5%	N/A	12v±25%	12v±25%	12v±25%
	Input Power Range @ 24V	24v ±5%	24v ±5%	24v ±5%	N/A	N/A	N/A
	Operating Temperature (°C)	0-60°C	0-60°C	0-60°C	-40-80°C	-40-80°C	-40-80°C
	Conformal Coating	Option	See HE-1920	N/A	✓	✓	✓
Vibration Resistant	Option	See HE-1920	N/A	✓	✓	✓	
3-Year Digital View Warranty	✓	✓	✓	✓	✓	✓	
ROHS Compliant	✓	✓	✓	✓	✓	✓	

Dedicated Video

AVP-1600

P/N: 4168400xx-3

The ALR-1400 is a compact, easy to use high quality Composite and S-Video input video interface for LCD panels up to UXGA 1600x1200 resolution.



Applications include:

Video surveillance, exploratory medical equipment, industrial.

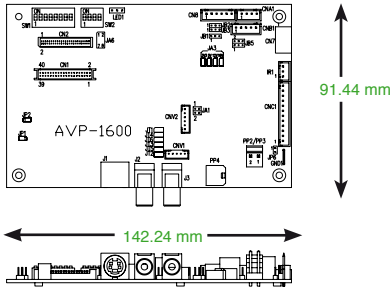
Features:

- Four NTSC/PAL/SECAM inputs. Two via external RCA jacks, two via header connection
- System information, run-time counter, OSD menu position, audio control, power down option, user setting, OSD menu position, gamma adjustment, saturation, Hue
- Function Controls: Buttons, Infrared, RS-232 serial protocol

Accessories/Options:

- | | |
|--------------------------------|-----------------|
| • OSD Digital Button Board Kit | Kit 60110-3 |
| • OSD Vertical Membrane Kit | Kit 60121-3 |
| • OSD Horizontal Membrane Kit | Kit 60125-3 |
| • Inverter Interface Board | P/N 416040010-3 |
| • Power Input Cable Kit | P/N 426013800-3 |
| • RS-232 Cable | P/N 426090200-3 |
| • Audio Amplifier | P/N 416940020-3 |
| • IR Remote Control | P/N 559000104-3 |

AVP-1600 Specifications



Looking for a panel cable?

Page 34 / 35

www.digitalview.com/controllers/csg.php

Hi-Resolution Mechanical Drawings

Click on Mechanical Tab

www.digitalview.com/controllers/products.php

Input Types: Composite, S-Video

Max Resolution: 1600 x 1200

Panel Signal: TTL (single pixel) & LVDS

Power: 12v 24v DC $\pm 5\%$

Panel Power Support:

3.3v, 5v, 12v, 18v

Inverter Support:

DPMS enable pin (3.3v or 5v)

MTBF: 260K hours

RoHS compliant: Yes

Warranty: 3 Year Manufacturer's

Video:

NTSC/PAL/SECAM (Interlaced)

Jumper Selectable

(A) 2x Composite Video & 2x S-Video;

(B) 2x Composite Video

Resolutions Supported:

1600 x 1200

1680 x 1050

1400 x 1050

1400 x 900

1366 x 768

1280 x 1024

1280 x 800

1280 x 768

1024 x 768

800 x 600

800 x 480

640 x 480

General Purpose / Small Form Factor

ALR-1400

P/N: 4171000xx-3

The ALR-1400 is a small footprint, highly integrated controller with both Analog RGB and DVI-D inputs.



Applications include:

General purpose display integration, portable test equipment, mobile computing.

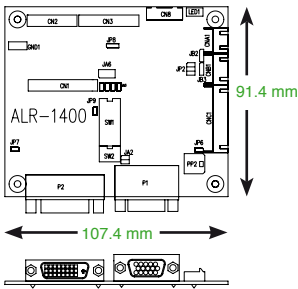
Features:

- Small footprint, high value
- Supports 4:3 format panels up to SXGA, 16:9 format panels up to WXGA
- Built-in LVDS support
- Dual or single pixel TTL interfaces
- Auto Setup, Auto RGB calibration, Auto source seek, Gamma Adjustment, OSD position, Input Source Select

Accessories/Options:

- | | |
|--------------------------------|-----------------|
| • OSD Digital Button Board Kit | Kit 60110-3 |
| • OSD Vertical Membrane Kit | Kit 60121-3 |
| • OSD Horizontal Membrane Kit | Kit 60125-3 |
| • Inverter Interface Board | P/N 416040010-3 |
| • Power Input Cable | P/N 426090200-3 |
| • RS-232 Cable | P/N 426090200-3 |

ALR-1400 Specifications



Looking for a panel cable?

Page 34 / 35

www.digitalview.com/controllers/csg.php

Hi-Resolution Mechanical Drawings

Click on Mechanical Tab

www.digitalview.com/controllers/products.php

Input Types: Analog RGB, DVI-D

Max Resolution: 1366 x 768

Panel Signal: TTL & LVDS

Power: 12V/24V DC +/- 5%, 4W

RS-232 Support: Yes

Panel Power Support:
3.3V, 5V, 12V, 18V

Inverter Support:
DPMS enable pin (5v or 12v / 24v),
Analog control via serial port controller
brightness

Color Depth: 8-Bit/16.7M colors

MTBF: 200K hours

RoHS compliant: Yes

Warranty: 3 Year Manufacturer's

Input Analog RGB:

60 Hz at SXGA, WXGA, XGA, SVGA,
VGA

Input DVI-D:

60 Hz at SXGA, WXGA, XGA, SVGA,
VGA

Resolutions Supported:

1366 x 768

1280 x 1024

1280 x 800

1280 x 768

1024 x 768

1024 x 600

800 x 600

800 x 480

640 x 480

General Purpose / Multimedia / Low Cost

DVS-1600

P/N: 4171400xx-3

The DVS-1600 is a cost effective, highly integrated controller for a wide range of TFT LCD panels up to UXGA (1600 x 1200) resolution.



Applications include:

General purpose multimedia display integration, standard definition digital signage.

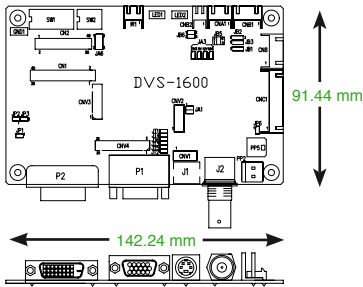
Features:

- Inputs for DVI-D, VGA, 1 x Composite, 1 x S-Video
- Supports wide variety of 4:3, 5:4, 16:9 and 16:10 format panels
- Built-in TTL & LVDS support
- Auto Setup, Auto RGB Calibration, Auto Source Seek, Gamma Adjustment, OSD Position, Input Source Select

Accessories/Options:

- | | |
|--------------------------------|-----------------|
| • OSD Digital Button Board Kit | Kit 60110-3 |
| • OSD Vertical Membrane Kit | Kit 60121-3 |
| • OSD Horizontal Membrane Kit | Kit 60125-3 |
| • Inverter Interface Board | P/N 416040010-3 |
| • Power Input Cable | P/N 426013800-3 |
| • RS-232 Cable | P/N 426090200-3 |
| • Audio Amplifier | P/N 416940020-3 |

DVS-1600 Specifications



Looking for a panel cable?

Page 34 / 35

www.digitalview.com/controllers/csg.php

Hi-Resolution Mechanical Drawings

Click on Mechanical Tab

www.digitalview.com/controllers/products.php

Input Types: Analog RGB, DVI-D, Video

Max Resolution: 1600 x 1200

Panel Signal: TTL (single pixel) & LVDS

Power: 12V/24V DC +/- 5%, 4W

RS-232 Support: Yes

Panel Power Support:
3.3V, 5V, 12V, 18V

Inverter Support: DPMS enable pin (3.3V or 5V)

Color Depth: 8-Bit/16.7M colors

MTBF: 260K hours

RoHS compliant: Yes

Warranty: 3 Year Manufacturer's

Input Analog RGB:

60 Hz at UXGA

60 Hz at SXGA, WXGA, XGA, SVGA, VGA

Input DVI-D:

60 Hz at UXGA

60 Hz at SXGA, WXGA, XGA, SVGA, VGA

Video:

NTSC/PAL/SECAM (Interlaced)

Composite Video, S-video

Resolutions Supported:

1600 x 1200

1680 x 1050

1440 x 900

1400 x 1050

1366 x 768

1280 x 1024

1280 x 800

1280 x 768

1024 x 768

800 x 600

800 x 480

640 x 480

General Purpose / High Quality Video Display

SP-1600

P/N: 4169900xx-3

The SP-1600 is a fully buffered, multi-sync interface controller providing direct analog and digital connection to a wide range of TFT LCD panels up UXGA resolution (1600 x 1200).



Applications include:

General purpose display integration (15.4" - 40"), legacy and current SUN compatible display design. Great for demanding 3D graphics. Customizeable with exceptional flexibility.

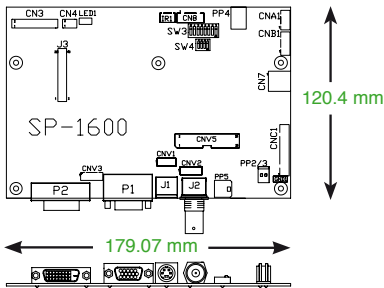
Features:

- Inputs for DVI, dual VGA channels, Composite, S-Video, Component Video
- Supports a wide variety of 4:3 & 16:9 format panels
- Built-in TTL & LVDS support
- Auto Picture Setup, Auto Color Gain, Auto Source Seek, OSD Menu Timeout, Gamma Adjustment, Color Temperature, Programmable Hot-Keys

Accessories/Options:

- | | |
|--------------------------------|-----------------|
| • OSD Digital Button Board Kit | Kit 60110-3 |
| • OSD Vertical Membrane Kit | Kit 60121-3 |
| • OSD Horizontal Membrane Kit | Kit 60125-3 |
| • Inverter Interface Board | P/N 416040010-3 |
| • Power Input Cable | P/N 426013800-3 |
| • RS-232 Cable | P/N 426090200-3 |
| • Audio Amplifier | P/N 416940020-3 |
| • IR Remote Control | P/N 559000104-3 |

SP-1600 Specifications



Looking for a panel cable?

Page 34 / 35

www.digitalview.com/controllers/csg.php

Hi-Resolution Mechanical Drawings

Click on Mechanical Tab

www.digitalview.com/controllers/products.php

Input Types: Analog RGB, DVI-I, Video

Max Resolution: 1600 x 1200

Panel Signal:
TTL (single pixel) & LVDS

Power: 12v / 24v DC +/- 5%, 4W

RS-232 Support: Yes

Panel Power Support:
3.3v, 5v, 12v, 18v

Inverter Support: DPMS enable pin (3.3v or 5v), Analog Control via Serial Port Control Brightness

Color Depth: 8-Bit/16.7M colors

MTBF: 100K hours

RoHS compliant: Yes

Warranty: 3 Year Manufacturer's

Input Analog RGB:

60 Hz at UXGA
75 Hz at SXGA, WXGA, XGA, SVGA, VGA
66 Hz, 76 Hz at 1152 x 900 (SUN)
76 Hz at 1280 x 1024 (SUN)

Input DVI-I:

60 Hz at UXGA, SXGA, WXGA, XGA, SVGA, VGA

75 Hz at SXGA, WXGA, XGA, SVGA, VGA

Video:

NTSC/PAL/SECAM (Interlaced)

Composite Video, S-Video, RGB Video, SD Component Video (YCbCr), Component Video (YPbPr)

Resolutions Supported:

1680 x 1050
1600 x 1200

1440 x 900
1400 x 1050

1366 x 768

1280 x 1024
1280 x 800
1280 x 768

1024 x 768

800 x 600

640 x 480

Professional Video / Broadcast Video

SVX-1920

P/N: 4122100xx-3

The SVX-1920 is a professional class High Definition controller supporting display modes up to 1080p on 1920x1200 resolution panels. The SVX-1920 can reproduce 1.07 Billion Colors by virtue of its full 10-bit architecture



Applications include:

Broadcast video, Digital Signage, Medical imaging, Gaming systems.

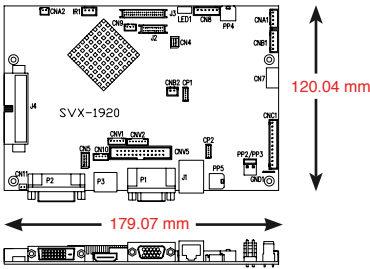
Features:

- Full 10-bit panel support via HDMI, DVI-D and HD Component Inputs delivers over 1 billion colors
- Full screen image expansion of lower resolutions, on-screen PIP functions
- OSD menu transparency, PIP - variable position, any input combinations (16 sizes)
- Programmable hot keys, RS-232 Serial port protocol, Ambient light sensor control
- Supports optional High-Definition Serial Digital Interface (HD-SDI) for professional and broadcast video applications
- Complete display management via Ethernet or RS-232

Accessories/Options:

- HD-SDI Adaptor Boards (HD-3000)
HD-3000 3Gbps SMPTE 424M P/N 4160160XX-3
- OSD Digital Button Board Kit Kit 60110-3
- OSD Vertical Membrane Kit Kit 60121-3
- OSD Horizontal Membrane Kit Kit 60125-3
- Inverter Interface Board P/N 416040010-3
- Power Input Cable P/N 426013800-3
- RS-232 Cable P/N 426090200-3
- Audio Amplifier P/N 416940020-3
- IR Remote Control P/N 559000104-3
- IE-1000 P/N 4171900xx-3

SVX-1920 Specifications



Looking for a panel cable?

Page 34 / 35

www.digitalview.com/controllers/csg.php

Hi-Resolution Mechanical Drawings

Click on Mechanical Tab

www.digitalview.com/controllers/products.php

Input Types:

Analog RGB, DVI-D, Video

Max Resolution: 1920 x 1200

Panel Signal:

Dual channel TTL & LVDS

Power:

12V DC/24 V DC +/- 5%, 4W

RS-232 Support: Yes

Panel Power Support:

3.3V, 5V, 12V, 18V

Inverter Support:

DPMS, Analog or PWM brightness control, serial port controller brightness

Color Depth:

10-Bit / 1.06 Billion Colors

10-Bit/ 120 Hz Support Option:

IE-1000

MTBF: 100K hours

RoHS compliant: Yes

Warranty: 3 Year Manufacturer's

Input Analog RGB:

60 Hz at WUXGA, UXGA

75 Hz at SXGA, WXGA, XGA, SVGA, VGA

Input DVI-D / HDMI:

60 Hz at WUXGA, UXGA

75 Hz at SXGA, WXGA, XGA, SVGA, VGA

Video:

NTSC/PAL/SECAM (Interlaced)

Composite Video, S-Video, RGB Video, SD

Component Video (YCbCr)

HD Component Video (YPbPr)

Resolutions Supported:

1920 x 1200

1920 x 1080

1680 x 1050

1600 x 1200

1440 x 900

1366 x 768

1280 x 1024

1280 x 800

1280 x 768

1024 x 768

800 x 600, 800 x 480

640 x 480

Professional Video / Broadcast Video

SVH-1920

P/N: 4169600xx-3

The SVH-1920 is a fully buffered, multi-sync interface controller providing direct analog and digital connection to a wide range of TFT LCD panels up to WUXGA (1920x1200).



Applications include:

Broadcast video, Digital Signage, Medical imaging, Gaming systems.

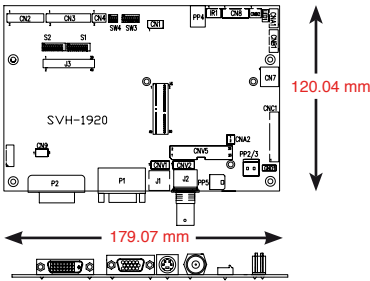
Features:

- Full screen image expansion of lower resolutions, image flip and invert function, on-screen PIP functions
- OSD menu transparency, Horizontal & Vertical image inversion, PIP - variable position, any input combinations (3 sizes)
- Programmable hot keys, RS-232 Serial port protocol, Ambient light sensor control
- Supports optional High-Definition Serial Digital Interface (HD-SDI) for professional and broadcast video applications

Accessories/Options:

- HD-SDI Adaptor Boards (HD-2000/1000)
HD-2000 - P/N 4160133xx-3 / **HD-1000** P/N 4160134xx-3
- OSD Digital Button Board Kit Kit 60110-3
- OSD Vertical Membrane Kit Kit 60121-3
- OSD Horizontal Membrane Kit Kit 60125-3
- Inverter Interface Board P/N 416040010-3
- Power Input Cable P/N 426013800-3
- RS-232 Cable P/N 426090200-3
- Audio Amplifier P/N 416940020-3
- IR Remote Control P/N 559000104-3
- IE-1000 120Hz Adapter P/N 4171900xx-3

SVH-1920 Specifications



Looking for a panel cable?

Page 34 / 35

www.digitalview.com/controllers/csg.php

Hi-Resolution Mechanical Drawings

Click on Mechanical Tab

www.digitalview.com/controllers/products.php

<p>Input Types: Analog RGB, DVI-D, Video</p>	<p>Input Analog RGB: 60 Hz at WUXGA, UXGA 75 Hz at SXGA, WXGA, XGA, SVGA, VGA</p>
<p>Max Resolution: 1920 x 1200</p>	<p>Input DVI-D: 60 Hz at WUXGA, UXGA 75 Hz at SXGA, WXGA, XGA, SVGA, VGA</p>
<p>Panel Signal: Dual channel TTL & LVDS</p>	<p>Video: NTSC/PAL/SECAM (Interlaced)</p>
<p>Power: 12V DC/24 V DC +/- 5%</p>	<p>Composite Video, S-Video, RGB Video, SD Component Video (YCbCr) HD Component (YPbPr)</p>
<p>RS-232 Support: Yes</p>	<p>Resolutions Supported: 1920 x 1200 1920 x 1080</p>
<p>Panel Power Support: 3.3V, 5V, 12V, 18V</p>	<p>1680 x 1050 1600 x 1200</p>
<p>Inverter Support: DPMS Enable Pin (3.3v or 5v), Analog or PWM brightness control via serial port controller brightness</p>	<p>1440 x 900 1366 x 768</p>
<p>Color Depth: 8-Bit/16.7M colors</p>	<p>1280 x 1024 1280 x 800 1280 x 768</p>
<p>120 Hz Support Option: IE-1000</p>	<p>1024 x 768</p>
<p>MTBF: 100K hours</p>	<p>800 x 600, 800 x 480</p>
<p>RoHS compliant: Yes</p>	<p>640 x 480</p>
<p>Warranty: 3 Year Manufacturer's</p>	

High Resolution Applications

DVI-2560

P/N: 417130020-3

The DVI-2560 is a purpose built, high-performance dual-channel DVI interface controller, capable of driving WQXGA (2560 x 1600) LCD panels from Samsung and LG.



Applications include:

High resolution applications - digital Topography, Navigation, Photography & Gallery, Education.

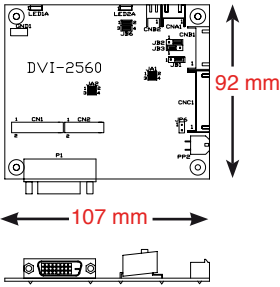
Features:

- Operating from a single 24 volt power supply, the controller derives all necessary voltages for:
 - the controller
 - the panel
 - inverter operation
- TMDS panel interface

Accessories / Options:

- | | |
|--------------------------------|-----------------|
| • OSD Digital Button Board Kit | Kit 60110-3 |
| • OSD Vertical Membrane Kit | Kit 60121-3 |
| • OSD Horizontal Membrane Kit | Kit 60125-3 |
| • Inverter Interface Board | P/N 416040010-3 |
| • Power Input Cable | P/N 416013700-3 |

DVI-2560 Specifications



Looking for a panel cable?

Page 34 / 35

www.digitalview.com/controllers/csg.php

Hi-Resolution Mechanical Drawings

Click on Mechanical Tab

www.digitalview.com/controllers/products.php

Input Types: Dual channel DVI-D
Resolution: 2560 x 1600
Panel Signal: TMDS
Power: 24V DC, 1.5W
RS-232 Support: Yes
Panel Power Support: 18V DC
Inverter Support: DPMS Enable Pin (3.3v or 5v)
Color Depth: 8-Bit/16.7M colors
MTBF: 100K hours
RoHS compliant: Yes
Warranty: 3 Year Manufacturer's

WQXGA

Samsung Panels Supported:

LTB300M1-P01

LTM300M1-P01

LG Panels Supported:

LM300W01-A3

LM300W01-STA4

LM300WQ3-STA1

LM300WQ5-STA1

Harsh Environment / Pro Video / Military**HE-1920**

P/N: 4169901xx-3

The HE-1920 is a fully buffered, multi-sync interface controller providing direct analog and digital connection to a wide range of TFT LCD panels up to WUXGA (1920x1200).

**Applications include:**

Outdoor digital signage, Mass Transit installations, high resolution Military displays, Marine displays.

Features:

- Full screen image expansion of lower resolutions, image flip and invert function, on-screen PIP functions
- OSD menu transparency, Horizontal & Vertical image inversion, PIP - variable position, any input combinations (3 sizes)
- Programmable hot keys, Serial port protocol, Ambient light sensor control
- Supports optional High-Definition Serial Digital Interface (HD-SDI) for professional and broadcast video applications
- Harsh Environment Features (see next page)

Accessories/Options:

- HD-SDI Adaptor Boards (HD-2000/1000)
HD-2000 - P/N 4160133xx-3 / **HD-1000** P/N 4160134xx-3
- OSD Digital Button Board Kit Kit 60110-3
- OSD Vertical Membrane Kit Kit 60121-3
- OSD Horizontal Membrane Kit Kit 60125-3
- Inverter Interface Board P/N 416040010-3
- Power Input Cable Kit P/N 426013800-3
- RS-232 Cable P/N 426090200-3
- Audio Amplifier P/N 416940020-3
- IR Remote Control P/N 559000104-3
- IE-1000 120Hz Adapter P/N 4171900xx-3