



Chipsmall Limited consists of a professional team with an average of over 10 year of expertise in the distribution of electronic components. Based in Hongkong, we have already established firm and mutual-benefit business relationships with customers from,Europe,America and south Asia,supplying obsolete and hard-to-find components to meet their specific needs.

With the principle of “Quality Parts,Customers Priority,Honest Operation,and Considerate Service”,our business mainly focus on the distribution of electronic components. Line cards we deal with include Microchip,ALPS,ROHM,Xilinx,Pulse,ON,Everlight and Freescale. Main products comprise IC,Modules,Potentiometer,IC Socket,Relay,Connector.Our parts cover such applications as commercial,industrial, and automotives areas.

We are looking forward to setting up business relationship with you and hope to provide you with the best service and solution. Let us make a better world for our industry!



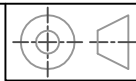
Contact us

Tel: +86-755-8981 8866 Fax: +86-755-8427 6832

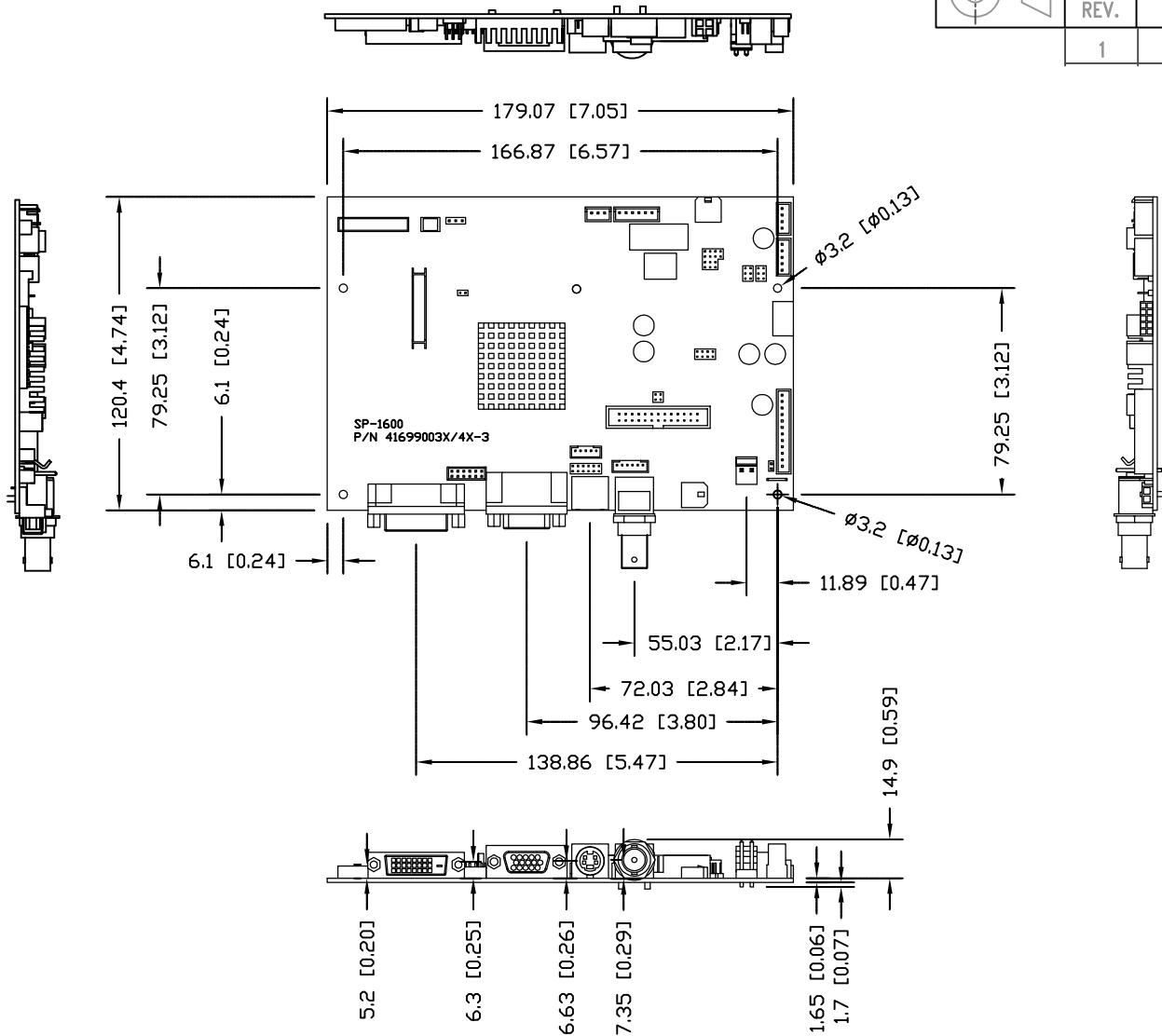
Email & Skype: info@chipsmall.com Web: www.chipsmall.com

Address: A1208, Overseas Decoration Building, #122 Zhenhua RD., Futian, Shenzhen, China





REVISION			
REV.	DESCRIPTION	APPR.	DATE
1	SP-1600		16 NOV 10



NOTE:
1. ALL DIMENSIONS ARE : mm [Inch]

			TITLE SP-1600 P/N 41699003X/4X-3		
--	--	--	----------------------------------	--	--

THE INFORMATION CONTAINED IN THIS DRAWING IS THE SOLE PROPERTY OF DIGITAL VIEW LIMITED ANY REPRODUCTION IN PART OR WHOLE WITHOUT THE WRITTEN PERMISSION OF DIGITAL VIEW LIMITED IS PROHIBITED.

TOLERANCES ARE: ±1

MATERIAL			FINISH		DO NOT SCALE DRAWING	
DESIGN	DRAW	CHECK	APPROVE	SCALE	1:1	FILE 41699003X/4X-3
	JASON TSE			SHEET SIZE		DWG. NO. 41699003X/4X-3
	16 NOV 10			SHEET		PART NO. 41699003X/4X-3

REV. 0