



Chipsmall Limited consists of a professional team with an average of over 10 year of expertise in the distribution of electronic components. Based in Hongkong, we have already established firm and mutual-benefit business relationships with customers from,Europe,America and south Asia,supplying obsolete and hard-to-find components to meet their specific needs.

With the principle of “Quality Parts,Customers Priority,Honest Operation,and Considerate Service”,our business mainly focus on the distribution of electronic components. Line cards we deal with include Microchip,ALPS,ROHM,Xilinx,Pulse,ON,Everlight and Freescale. Main products comprise IC,Modules,Potentiometer,IC Socket,Relay,Connector.Our parts cover such applications as commercial,industrial, and automotives areas.

We are looking forward to setting up business relationship with you and hope to provide you with the best service and solution. Let us make a better world for our industry!



## Contact us

Tel: +86-755-8981 8866 Fax: +86-755-8427 6832

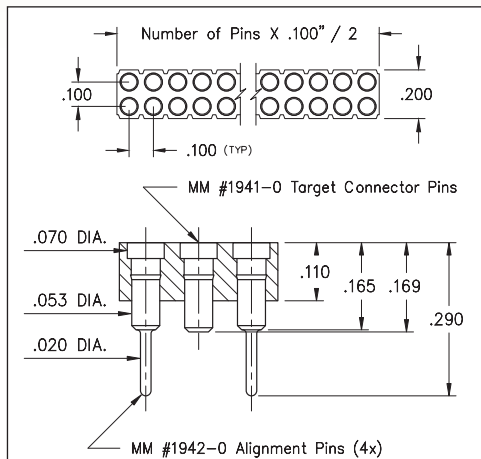
Email & Skype: info@chipsmall.com Web: www.chipsmall.com

Address: A1208, Overseas Decoration Building, #122 Zhenhua RD., Futian, Shenzhen, China

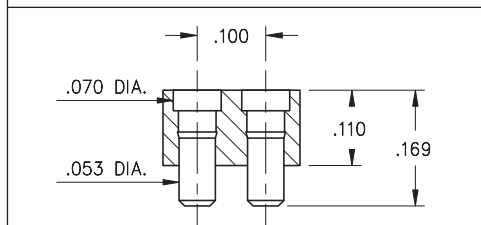


# SPRING-LOADED CONNECTORS

## SERIES 419, 499 • .100" GRID TARGET CONNECTORS FOR SPRING-LOADED ASSEMBLIES • DOUBLE ROW STRIPS

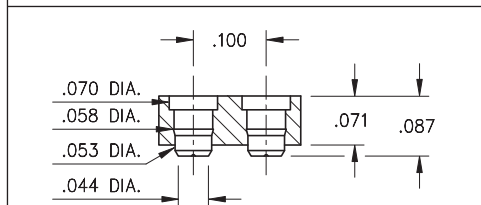


**FIG. 1**



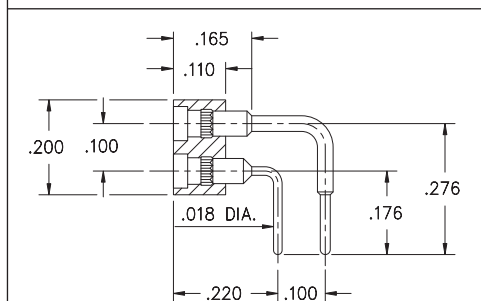
**FIG. 2**

Coplanarity .005" For Pin counts >20 positions, consult Technical Support.



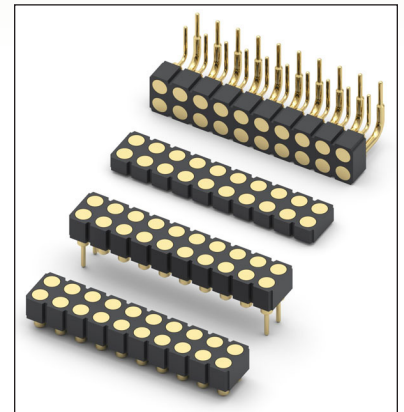
**FIG. 3**

Coplanarity .005" For Pin counts >20 positions, consult Technical Support.



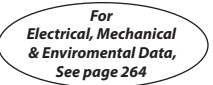



**FIG. 4**

- Series 419 and 499 Spring Target Connectors, supplied in double row strips. Available in SMT and right angle through-hole termination configurations
- Target Connectors provide an excellent gold-plated conductive mating surface for spring loaded connectors. These series are offered with a flat face for making contact with our standard .042" dia. spring pin plungers
- Target connectors use MM #1940, #1941/1942, #1953 and #1954 pins. See pages 218 & 223.3 for details
- Insulators are high temperature thermoplastic



### ORDERING INFORMATION

	Series 419...042	Surface Mount w/ Alignments Pins
<b>FIG. 1</b>	419-10-2	-30-042000 Specify number of pins → 06-72
<b>FIG. 2</b>	Series 419...041	Surface Mount 419-10-2 -30-041000 Specify number of pins → 04-72
<b>FIG. 3</b>	Series 419...054	Low Profile Surface Mount 419-10-2 -30-054000 Specify number of pins → 04-72
<b>FIG. 4</b>	Series 499...008	Right Angle Solder Tails 499-10-2 -10-008000 Specify number of pins → 02-64
  		
<b>SPECIFY PLATING CODE XX=</b>	10	◆
Pin Plating 	10 μ" Au	