



Chipsmall Limited consists of a professional team with an average of over 10 year of expertise in the distribution of electronic components. Based in Hongkong, we have already established firm and mutual-benefit business relationships with customers from,Europe,America and south Asia,supplying obsolete and hard-to-find components to meet their specific needs.

With the principle of “Quality Parts,Customers Priority,Honest Operation,and Considerate Service”,our business mainly focus on the distribution of electronic components. Line cards we deal with include Microchip,ALPS,ROHM,Xilinx,Pulse,ON,Everlight and Freescale. Main products comprise IC,Modules,Potentiometer,IC Socket,Relay,Connector.Our parts cover such applications as commercial,industrial, and automotives areas.

We are looking forward to setting up business relationship with you and hope to provide you with the best service and solution. Let us make a better world for our industry!



Contact us

Tel: +86-755-8981 8866 Fax: +86-755-8427 6832

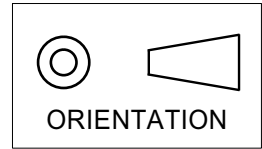
Email & Skype: info@chipsmall.com Web: www.chipsmall.com

Address: A1208, Overseas Decoration Building, #122 Zhenhua RD., Futian, Shenzhen, China

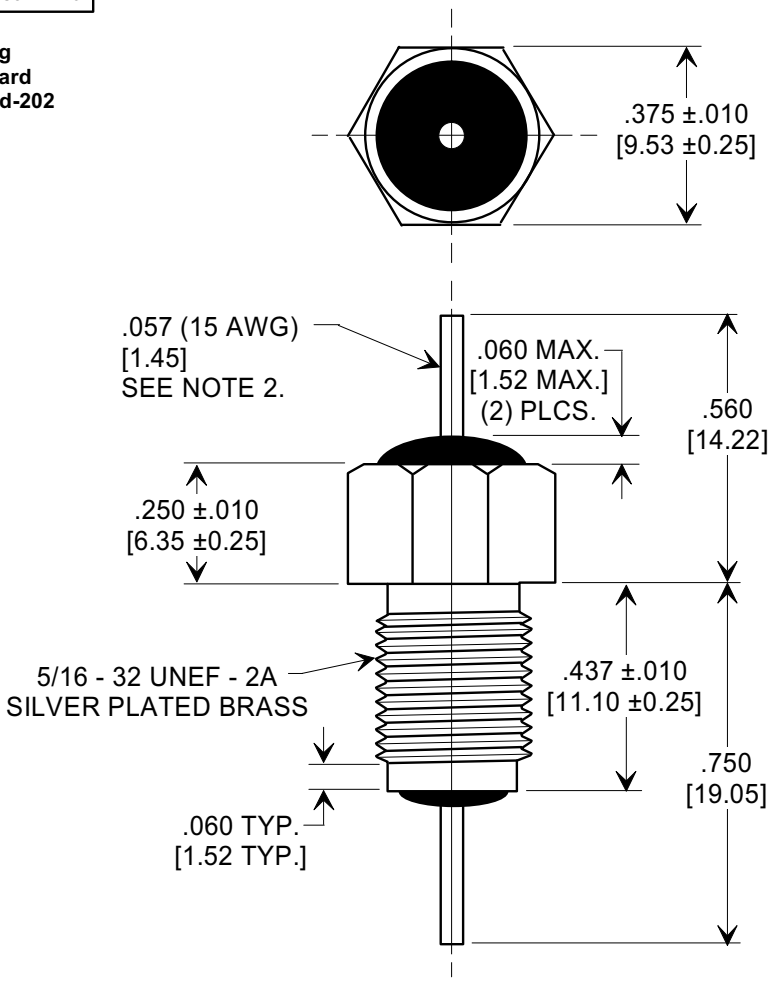
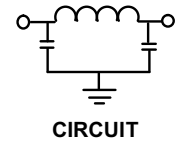


This drawing is the property of Tusonix, Inc., and may not be used, reproduced, published or disclosed to others without expressed authorization by Tusonix Inc.

MARKETING SALES DRAWING
DIMENSIONS IN INCHES - DO NOT SCALE THIS DRAWING
DIMENSIONS IN METRIC - []



Electrical Testing
per Tusonix standard
test plans and Mil-Std-202
Test Methods.



NOTES:

- TUSONIX NON-RoHS PART NUMBER: 4206-007.
TUSONIX RoHS COMPLIANT PART NUMBER: 4206-007 LF.
CUSTOMER MUST SPECIFY NON-RoHS OR RoHS PART NUMBER WHEN ORDERING.
- LEAD FINISH: NON-RoHS PART #: 60/40 SOLDER PLATED COPPER. RoHS PART #: SILVER PLATED COPPER.
- PART MARKING: TRADEMARK AND VARIATION NUMBER ON HEX FLATS.
NON-RoHS PART: BLACK INK. RoHS PART: GREEN INK.
- SUPPLIED WITH SILVER PLATED COPPER ALLOY HEX NUT AND INTERNAL TOOTH LOCK WASHER.

CAP. pF	WORKING VOLTAGE Vdc		CURRENT dc	MINIMUM NO LOAD INSERTION LOSS (dB) AT 25°C PER MIL-STD-220				IR Min	DWV
	+ 85° C	+ 125° C		10 MHz	100 MHz	1 GHz	10 GHz		
4500 / 9000	700	500	25 A	15	65	70	70	10 G	1400 VDC

X-2015 Rev-0	REVISION RECORD		0 Original Release C.O. 3139 DWN TO COMP. FMT DIM. RREVISD .560 WAS "A". L.E. 12-04-98 1 19981202-1-01 ADDED NOTES & METRIC. S.M. 01-27-99 2 19990126-1-01 REVISED NOTES. S.M. 10-24-05 3 20051006-1-04 REVISED NOTES. R.J. 06-22-15 A ECO-4643	--TOLERANCES-- Unless Otherwise Specified		Title	
	DECIMAL ± .031 [0.79]			EM I FILTER			
	ANGLES ±			Drawn	S.M. 12-03-98	Scale	2.5 X
	TUSONIX TUCSON, ARIZONA			Approved	J.Mc. 12-03-98	A	
						4206-007	