



Chipsmall Limited consists of a professional team with an average of over 10 year of expertise in the distribution of electronic components. Based in Hongkong, we have already established firm and mutual-benefit business relationships with customers from,Europe,America and south Asia,supplying obsolete and hard-to-find components to meet their specific needs.

With the principle of “Quality Parts,Customers Priority,Honest Operation,and Considerate Service”,our business mainly focus on the distribution of electronic components. Line cards we deal with include Microchip,ALPS,ROHM,Xilinx,Pulse,ON,Everlight and Freescale. Main products comprise IC,Modules,Potentiometer,IC Socket,Relay,Connector.Our parts cover such applications as commercial,industrial, and automotives areas.

We are looking forward to setting up business relationship with you and hope to provide you with the best service and solution. Let us make a better world for our industry!



## Contact us

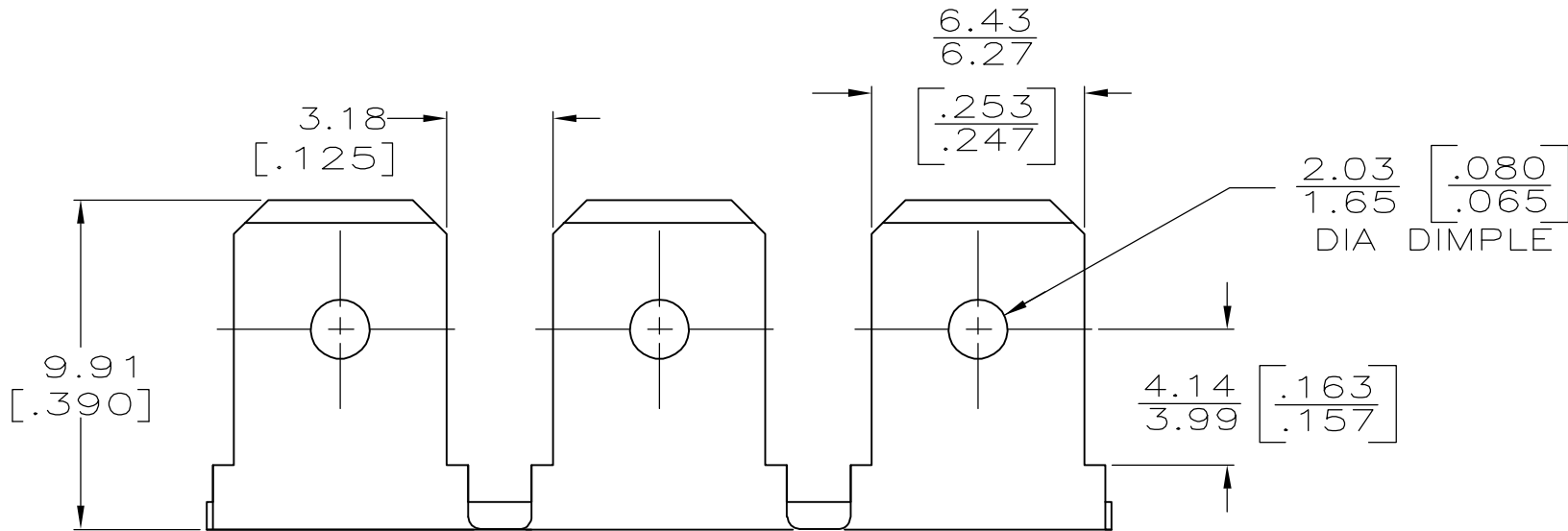
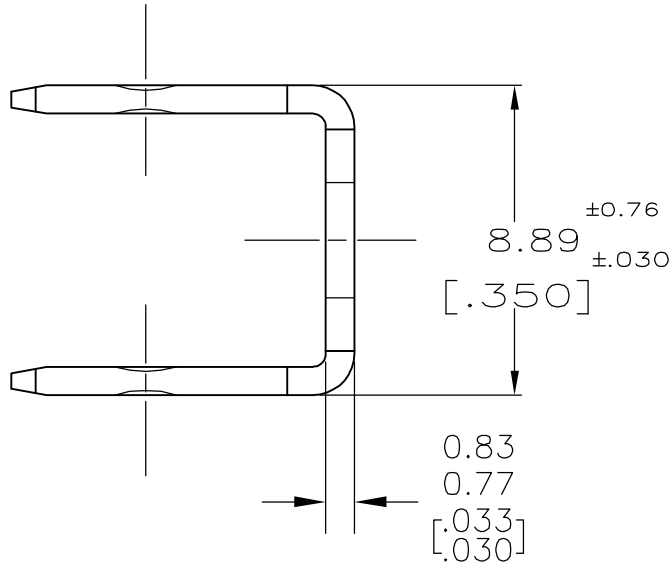
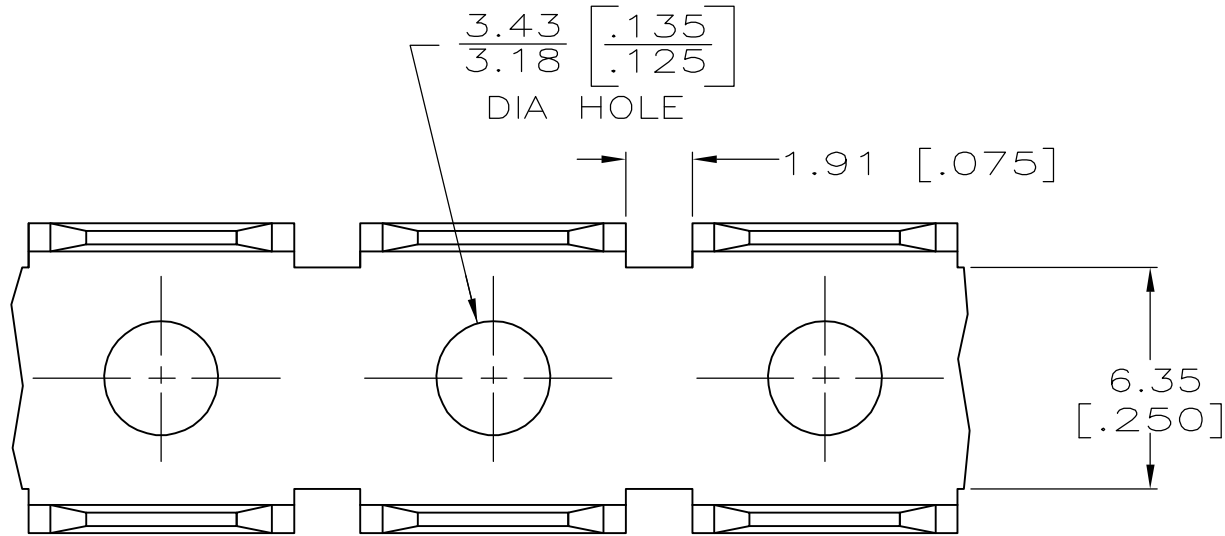
Tel: +86-755-8981 8866 Fax: +86-755-8427 6832

Email & Skype: [info@chipsmall.com](mailto:info@chipsmall.com) Web: [www.chipsmall.com](http://www.chipsmall.com)

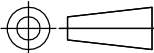
Address: A1208, Overseas Decoration Building, #122 Zhenhua RD., Futian, Shenzhen, China



1 CONTINUOUS STRIP ON REELS.



—	42115-6
TIN	42115-4
FINISH	PART NO

THIS DRAWING IS A CONTROLLED DOCUMENT.		DWN	JR RUTH	12/2/91	<b>tyco</b>		Tyco Electronics Corporation					
		CHK	MS FEHER	12/2/91	<b>Electronics</b>		Harrisburg, PA 17105-3608					
DIMENSIONS: mm [INCHES]	TOLERANCES UNLESS OTHERWISE SPECIFIED:		APVD	MEYERS	12/2/91	NAME						
	0 PLC ± -		PRODUCT SPEC		TAB, FASTON, 6.35 [.250] SERIES							
	1 PLC ± -		—									
	2 PLC ± -		APPLICATION SPEC									
	3 PLC ± 0.38 [.015]		—									
	4 PLC ± -											
ANGLES ± -				SIZE		CAGE CODE	DRAWING NO		RESTRICTED TO			
MATERIAL	FINISH		WEIGHT		A3		00779	C=42115		—		
082 BRASS	SEE TABLE											
CUSTOMER DRAWING					SCALE		5:1	SHEET		1 OF 1	REV	AM