



Chipsmall Limited consists of a professional team with an average of over 10 year of expertise in the distribution of electronic components. Based in Hongkong, we have already established firm and mutual-benefit business relationships with customers from,Europe,America and south Asia,supplying obsolete and hard-to-find components to meet their specific needs.

With the principle of “Quality Parts,Customers Priority,Honest Operation,and Considerate Service”,our business mainly focus on the distribution of electronic components. Line cards we deal with include Microchip,ALPS,ROHM,Xilinx,Pulse,ON,Everlight and Freescale. Main products comprise IC,Modules,Potentiometer,IC Socket,Relay,Connector.Our parts cover such applications as commercial,industrial, and automotives areas.

We are looking forward to setting up business relationship with you and hope to provide you with the best service and solution. Let us make a better world for our industry!



Contact us

Tel: +86-755-8981 8866 Fax: +86-755-8427 6832

Email & Skype: info@chipsmall.com Web: www.chipsmall.com

Address: A1208, Overseas Decoration Building, #122 Zhenhua RD., Futian, Shenzhen, China



THIS DRAWING IS UNPUBLISHED.

RELEASED FOR PUBLICATION

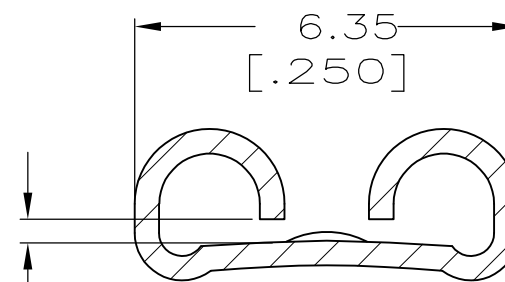
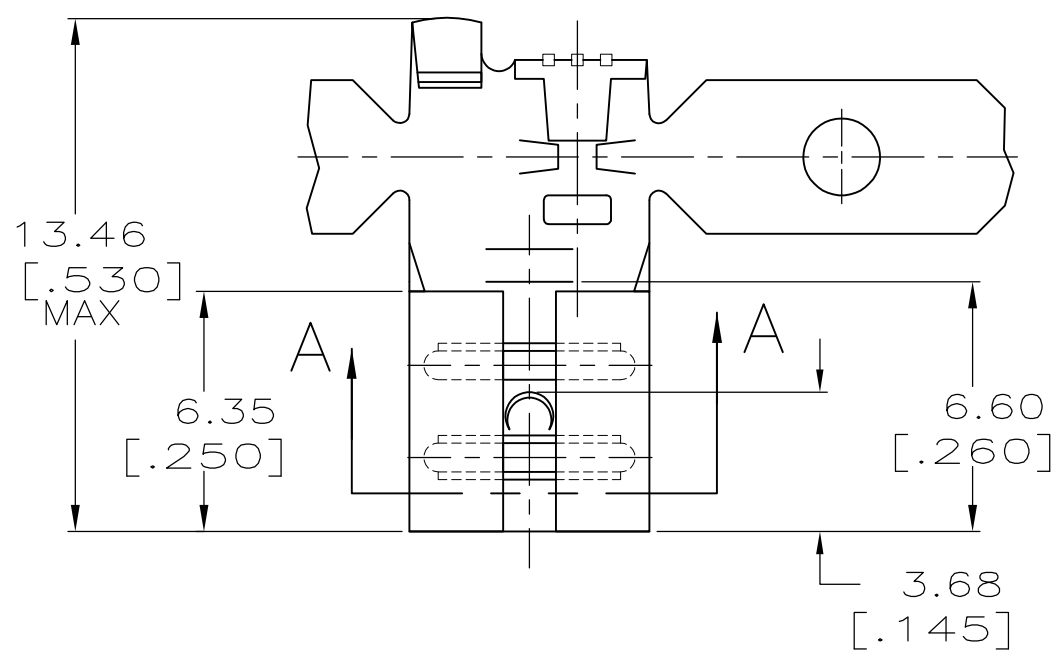
ALL RIGHTS RESERVED.

© COPYRIGHT - By -

LOC AF DIST 50

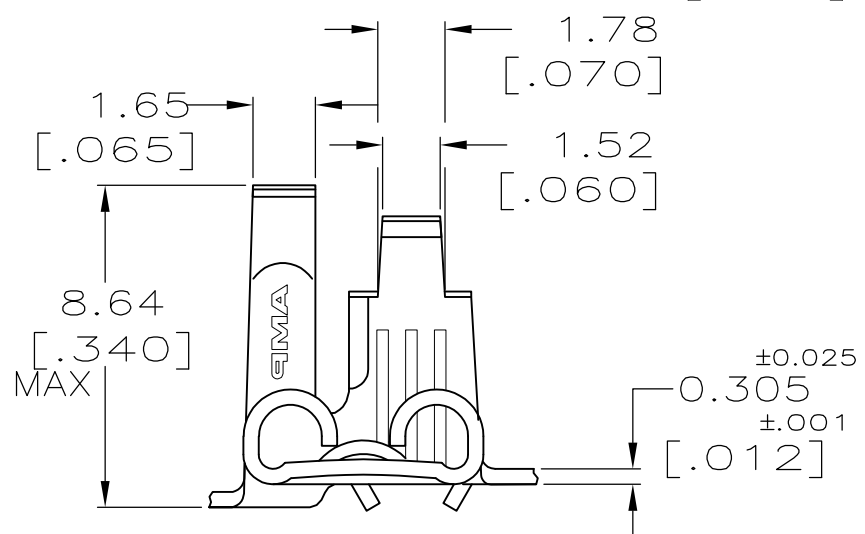
REVISIONS

P	LTR	DESCRIPTION	DATE	DWN	APVD
	M	REVISED PER ECR-12-013445	08NOV12	KH	PD



FITS 5.21 [.205] SERIES FASTON TAB

SECTION A-A
SCALE 8:1



- 1 CONTINUOUS STRIP ON REELS
- 2 FEED IS 16.51±0.13[.650]±.005

TIN	2.79-4.32 [.110-.170]	0.5-1.3mm ² [20-16]	0.508 [.020]	42199-2
-				42199-1
FINISH	INSULATION RANGE	WIRE SIZE	MATING TAB THK ±0.025±[.001]	PART NO

THIS DRAWING IS A CONTROLLED DOCUMENT.

DWN JR RUTH 1/26/90

CHK MS FEHER 1/26/90

APVD C MEYERS 1/26/90

PRODUCT SPEC

APPLICATION SPEC

WEIGHT -

CUSTOMER DRAWING

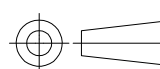
STE TE Connectivity

NAME RECEPTACLE, FASTON, FLAG, 5.21 [.205] SERIES

SIZE	CAGE CODE	DRAWING NO	RESTRICTED TO
A3	00779	C-42199	-

DIMENSIONS:
mm [INCHES]

TOLERANCES UNLESS OTHERWISE SPECIFIED:



0 PLC	± -
1 PLC	± -
2 PLC	± -
3 PLC	± 0.38 [.015]
4 PLC	± -
ANGLES	± -

MATERIAL	FINISH
BRASS	SEE TABLE

METRIC

SCALE	SHEET	REV
5:1	1 OF 1	M