



Chipsmall Limited consists of a professional team with an average of over 10 year of expertise in the distribution of electronic components. Based in Hongkong, we have already established firm and mutual-benefit business relationships with customers from,Europe,America and south Asia,supplying obsolete and hard-to-find components to meet their specific needs.

With the principle of “Quality Parts,Customers Priority,Honest Operation,and Considerate Service”,our business mainly focus on the distribution of electronic components. Line cards we deal with include Microchip,ALPS,ROHM,Xilinx,Pulse,ON,Everlight and Freescale. Main products comprise IC,Modules,Potentiometer,IC Socket,Relay,Connector.Our parts cover such applications as commercial,industrial, and automotives areas.

We are looking forward to setting up business relationship with you and hope to provide you with the best service and solution. Let us make a better world for our industry!



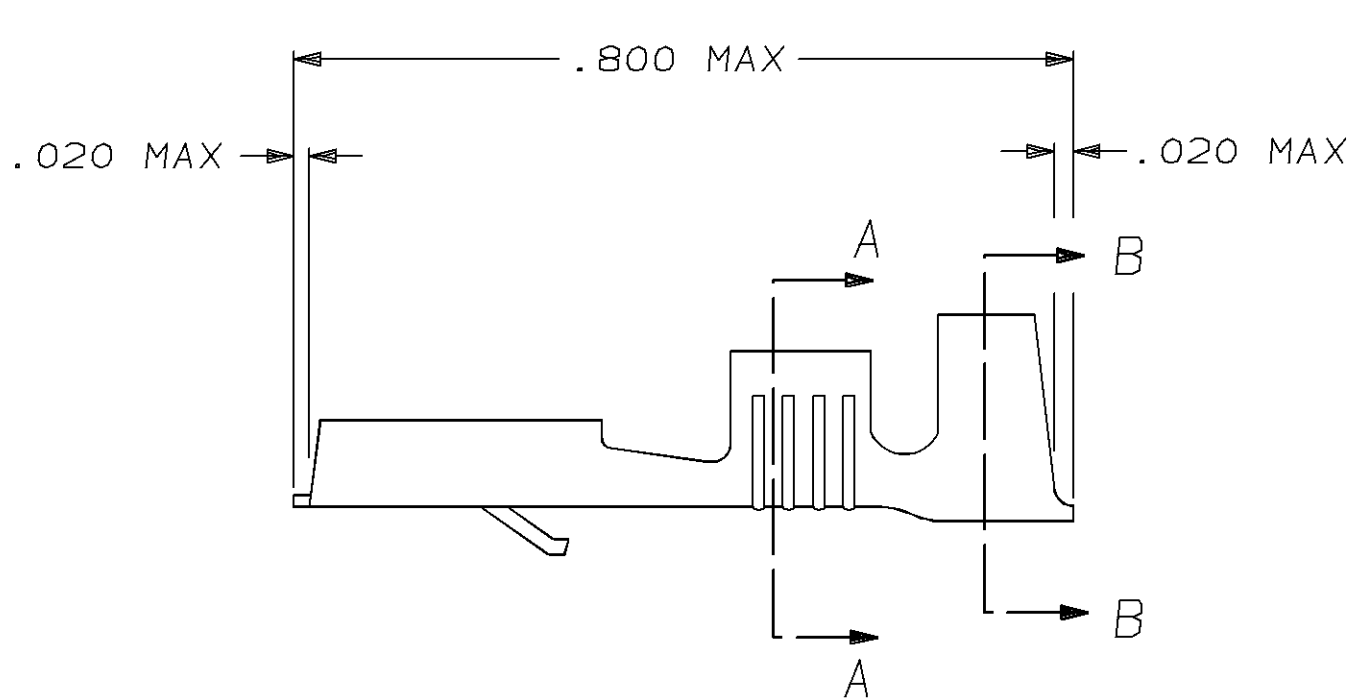
Contact us

Tel: +86-755-8981 8866 Fax: +86-755-8427 6832

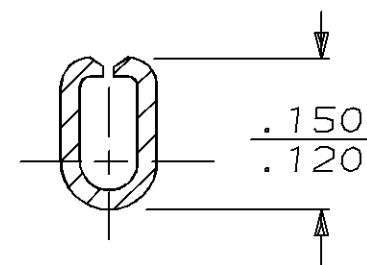
Email & Skype: info@chipsmall.com Web: www.chipsmall.com

Address: A1208, Overseas Decoration Building, #122 Zhenhua RD., Futian, Shenzhen, China

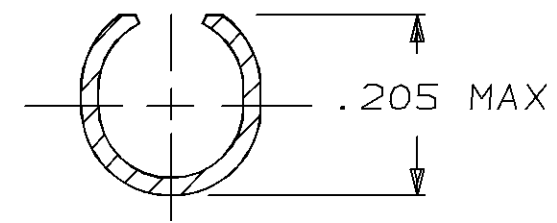




1 - SUPPLIED IN LOOSE PIECE.



SECTION A-A



SECTION B-B

| | | | | | | | |
|---|-----------|--------|----------|-----------------------------|--|---------------|------------------|
| OBSOLETE | 42100-3 | SILVER | BRASS | .120-.160 | 18-14 | .032 ±.001 | 42238-3 |
| | 42100-2 | TIN | BRASS | .120-.160 | 18-14 | .032 ±.001 | 42238-2 |
| | 42100-1 | — | BRASS | .120-.160 | 18-14 | .032 ±.001 | 42238-1 |
| | MAKE FROM | FINISH | MATERIAL | INSULATION RANGE | WIRE SIZE | TAB THK | PART NO |
| UNLESS OTHERWISE SPECIFIED DIMENSIONS ARE IN INCHES TOLERANCES ON: 2 PL DEC ± — 3 PL DEC ± .015 ANGLES ± — | | | | DR 11/6/86 JR RUTH | <div> TE Connectivity</div> | | |
| | | | | CHK 11/6/86 G YETTER | | | |
| | | | | APPD 11/6/86 J GILLESPIE | NAME .250 SERIES FASTIN - FASTON RECEPTACLE | | |
| | | | | APPD 11/6/86 R KUZO | | | |
| MATERIAL .012 THK | | | | PRODUCT SPEC | SIZE B | FSCM NO 00779 | DRAWING NO 42238 |
| FINISH SEE ABOVE | | | | APPLICATION SPEC | SCALE NTS | SHEET 1 OF 1 | |
| | | | | WEIGHT | | | |