



Chipsmall Limited consists of a professional team with an average of over 10 year of expertise in the distribution of electronic components. Based in Hongkong, we have already established firm and mutual-benefit business relationships with customers from,Europe,America and south Asia,supplying obsolete and hard-to-find components to meet their specific needs.

With the principle of “Quality Parts,Customers Priority,Honest Operation,and Considerate Service”,our business mainly focus on the distribution of electronic components. Line cards we deal with include Microchip,ALPS,ROHM,Xilinx,Pulse,ON,Everlight and Freescale. Main products comprise IC,Modules,Potentiometer,IC Socket,Relay,Connector.Our parts cover such applications as commercial,industrial, and automotives areas.

We are looking forward to setting up business relationship with you and hope to provide you with the best service and solution. Let us make a better world for our industry!



Contact us

Tel: +86-755-8981 8866 Fax: +86-755-8427 6832

Email & Skype: info@chipsmall.com Web: www.chipsmall.com

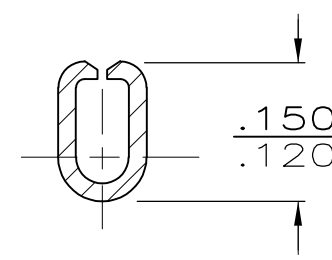
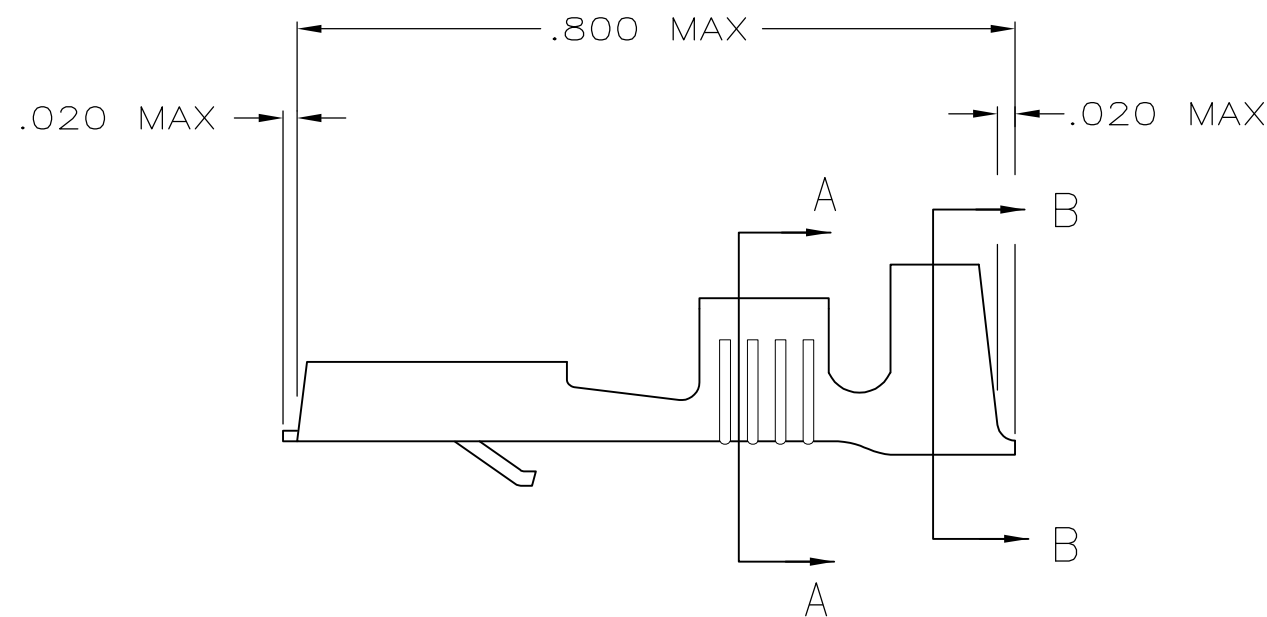
Address: A1208, Overseas Decoration Building, #122 Zhenhua RD., Futian, Shenzhen, China



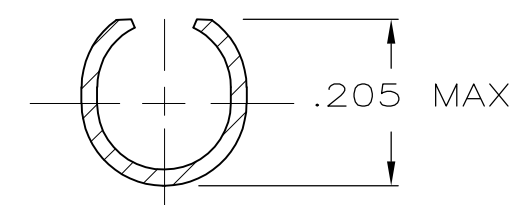
THIS DRAWING IS UNPUBLISHED. RELEASED FOR PUBLICATION
 © COPYRIGHT - By - ALL RIGHTS RESERVED.

LOC	DIST	REVISIONS					
AF	50	P	LTR	DESCRIPTION	DATE	DWN	APVD
			B1	REVISED PER ECO-11-004917	11MAR11	RK	HMR

- 1 SUPPLIED IN LOOSE PIECE FORM.
- 2 SEE STRIP DWG. 42281 FOR ADDITIONAL DETAILS.



SECTION A-A



SECTION B-B

OBSOLETE	SILVER	BRASS	.120-.160 DIA	#18-#14 AWG	.032	42282-3
	TIN	BRASS	.120-.160 DIA	#18-#14 AWG	.032	42282-2
	-	BRASS	.120-.160 DIA	#18-#14 AWG	.032	42282-1
	FINISH	MATERIAL	INSUL RANGE	WIRE SIZE	MATING TAB THK ±.001	PART NO

THIS DRAWING IS A CONTROLLED DOCUMENT.		DWN	JR RUTH	6/16/92	TE TE Connectivity
DIMENSIONS: MM[INCHES]		CHK	MS FEHER	6/16/92	
		APVD	J GILLESPIE	6/16/92	
		TOLERANCES UNLESS OTHERWISE SPECIFIED:			
MATERIAL		RECEPTACLE, FASTIN-FASTON, .250 SERIES			RESTRICTED TO
SEE TABLE		SIZE			
FINISH		DRAWING NO			A3 00779 C-42282
SEE TABLE		CAGE CODE			
THIS DRAWING IS A CONTROLLED DOCUMENT FOR AMP INCORPORATED. IT IS SUBJECT TO CHANGE AND THE CONTROLLING ENGINEERING ORGANIZATION SHOULD BE CONTACTED FOR THE LATEST REVISION.		APPLY SPEC			SHEET 1 OF 1
		WEIGHT			
		CUSTOMER DRAWING			REV B1