



Chipsmall Limited consists of a professional team with an average of over 10 year of expertise in the distribution of electronic components. Based in Hongkong, we have already established firm and mutual-benefit business relationships with customers from,Europe,America and south Asia,supplying obsolete and hard-to-find components to meet their specific needs.

With the principle of “Quality Parts,Customers Priority,Honest Operation,and Considerate Service”,our business mainly focus on the distribution of electronic components. Line cards we deal with include Microchip,ALPS,ROHM,Xilinx,Pulse,ON,Everlight and Freescale. Main products comprise IC,Modules,Potentiometer,IC Socket,Relay,Connector.Our parts cover such applications as commercial,industrial, and automotives areas.

We are looking forward to setting up business relationship with you and hope to provide you with the best service and solution. Let us make a better world for our industry!



## Contact us

Tel: +86-755-8981 8866 Fax: +86-755-8427 6832

Email & Skype: info@chipsmall.com Web: www.chipsmall.com

Address: A1208, Overseas Decoration Building, #122 Zhenhua RD., Futian, Shenzhen, China



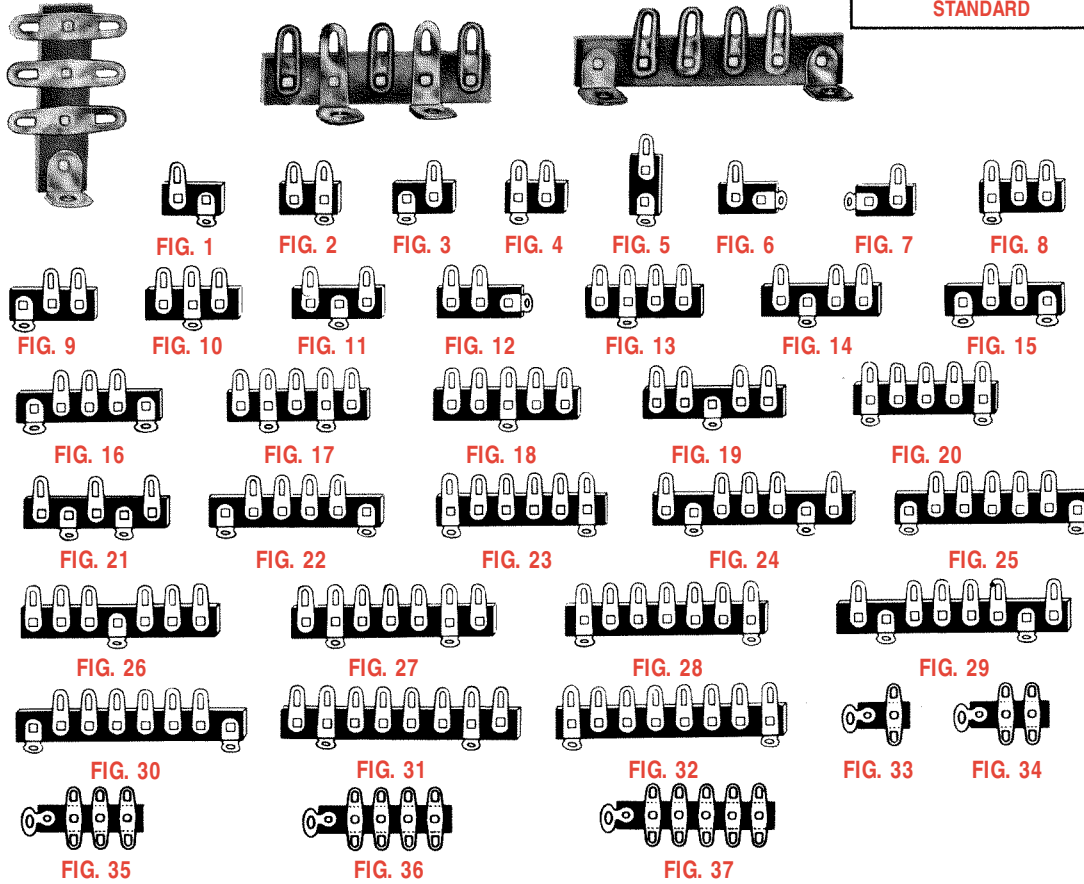
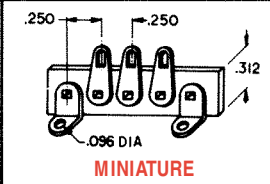
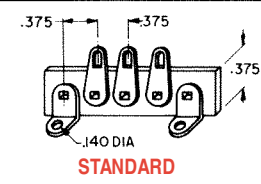
# TERMINAL STRIPS & BOARDS

Designers' Choice



## TERMINAL STRIPS (Standard & Miniature)

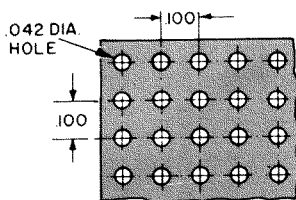
Tin plated lugs and brackets. Bakelite XP .062 thick. In addition to the strips shown, we manufacture many other varieties in any configuration and materials required. Send samples or sketch for prompt quotation.



STANDARD CAT. NO.	FIG. NO.	MINIATURE CAT. NO.
800	1	837
801	2	838
802	3	839
803	4	840
804	5	841
805	6	842
806	7	843
807	8	844
808	9	845
809	10	846
810	11	847
811	12	848
812	13	849
813	14	850
814	15	851
815	16	852
816	17	853
817	18	854
818	19	855
819	20	856
820	21	857
821	22	858
822	23	859
823	24	860
824	25	861
825	26	862
826	27	863
827	28	864
828	29	865
829	30	866
830	31	867
831	32	868
832	33	—
833	34	—
834	35	—
835	36	—
836	37	—

## MIRCO-MINIATURE BREADBOARDS WITH .042 DIA. HOLES

- FOR MODULE STACKS
- SMALLER PLUG-IN CARDS POSSIBLE
- PERMITS HIGHER COMPONENT DENSITY



"P" PATTERN .042 HOLES .100x.100

WIDTH & LENGTH	NO. HOLES W & L	GLASS EPOXY CAT. NO.	XP NATURAL PHENOLIC CAT. NO.	WIDTH & LENGTH	NO. HOLES W & L	GLASS EPOXY CAT. NO.	XP NATURAL PHENOLIC CAT. NO.
<b>.032 THICK (1/32")</b>				<b>.062 THICK (1/16")</b>			
2.00 x 4.50	19 x 44	4225	—	2.00 x 4.50	19 x 44	3405	3396
2.00 x 6.00	19 x 59	4226	—	2.00 x 6.00	19 x 59	3406	3397
4.50 x 6.00	44 x 59	4227	—	2.73 x 17.00	26 x 169	3407	3398
6.00 x 17.00	59 x 169	4228	—	3.00 x 4.50	29 x 44	3408	3399
<b>.047 THICK (3/64")</b>				4.50 x 6.00	44 x 59	3409	3400
2.00 x 4.50	19 x 44	4229	—	4.50 x 6.50	44 x 64	3410	3404
2.00 x 6.00	19 x 59	4230	—	4.50 x 8.50	44 x 84	3411	3425
4.50 x 6.00	44 x 59	4231	—	4.50 x 17.00	44 x 169	3412	3426
6.00 x 17.00	59 x 169	4232	—	6.00 x 17.00	59 x 169	3413	3427

## CUSTOM BUILT TERMINAL BOARDS

We are specialists in the custom fabrication (stamping/machining) of all phenolic, fiberglass and fibre-board materials. We also assemble terminals, eyelets, and special hardware to boards. Quotations on special terminal boards furnished promptly upon receipt of sample, sketch or print. Also available, assembly services using customer supplied materials.