



Chipsmall Limited consists of a professional team with an average of over 10 year of expertise in the distribution of electronic components. Based in Hongkong, we have already established firm and mutual-benefit business relationships with customers from,Europe,America and south Asia,supplying obsolete and hard-to-find components to meet their specific needs.

With the principle of “Quality Parts,Customers Priority,Honest Operation,and Considerate Service”,our business mainly focus on the distribution of electronic components. Line cards we deal with include Microchip,ALPS,ROHM,Xilinx,Pulse,ON,Everlight and Freescale. Main products comprise IC,Modules,Potentiometer,IC Socket,Relay,Connector.Our parts cover such applications as commercial,industrial, and automotives areas.

We are looking forward to setting up business relationship with you and hope to provide you with the best service and solution. Let us make a better world for our industry!



Contact us

Tel: +86-755-8981 8866 Fax: +86-755-8427 6832

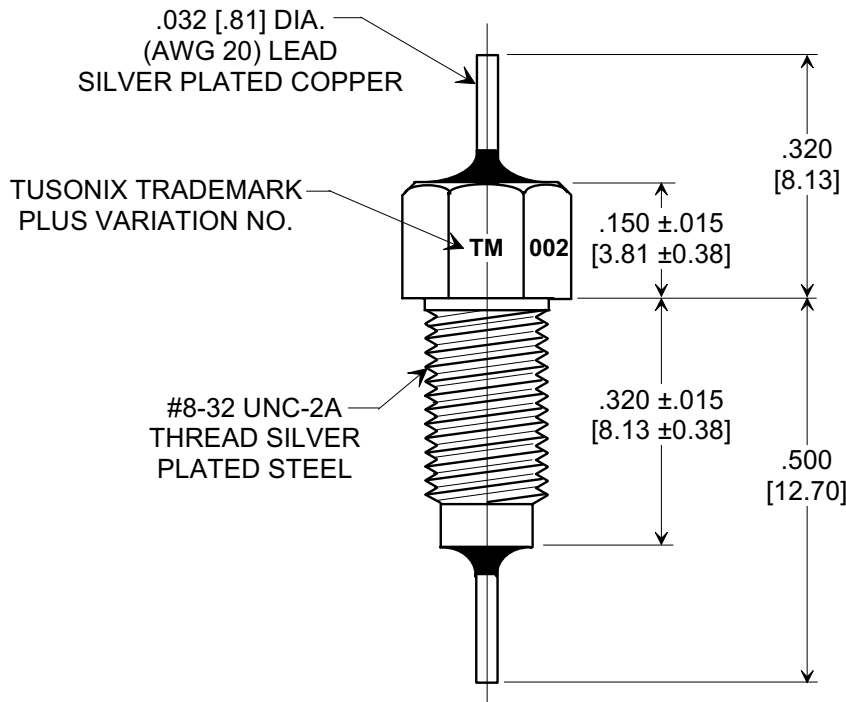
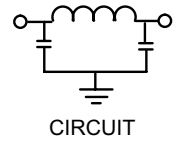
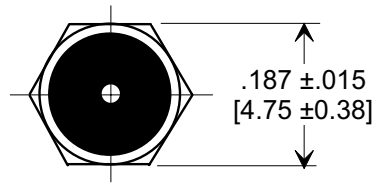
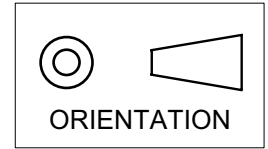
Email & Skype: info@chipsmall.com Web: www.chipsmall.com

Address: A1208, Overseas Decoration Building, #122 Zhenhua RD., Futian, Shenzhen, China



MARKETING SALES DRAWING
DIMENSIONS IN INCHES - DO NOT SCALE THIS DRAWING
DIMENSIONS IN METRIC []

Electrical Testing
per Tusonix standard
test plans and Mil-Std-202
Test Methods.



NOTES:

- TUSONIX STANDARD PART NUMBER: 4251-002.
TUSONIX RoHS COMPLIANT PART NUMBER: 4251-002 LF.
CUSTOMER MUST SPECIFY STANDARD OR RoHS PART NUMBER WHEN ORDERING.
- PART MARKING: TRADEMARK AND VARIATION NUMBER ON HEX FLATS.
STANDARD PART: BLACK INK. RoHS PART: GREEN INK.
- SUPPLIED WITH SILVER PLATED COPPER ALLOY HEX NUT AND INTERNAL TOOTH LOCK WASHER.

MIN. CAP.	125°C WORKING VOLTAGE	CURRENT Vdc	IR MIN.	DWV	MINIMUM NO LOAD INSERTION LOSS (dB) @ 25°C PER MIL-STD-220				
					1 MHz	10 MHz	100 MHz	1 GHz	10 GHz
12,000 pF	125 VDC	10 A	10 G Ω	500 VDC	5	28	65	70	70

X-2015 Rev-0 REVISION RECORD	0	Original Release C.O. 6611	MULTILAYER BUSHING STYLE EMI FILTER	Title	
	1	DIM'S REVISED, TITLE CHNGD. E.C. 05-26-92		MULTILAYER BUSHING STYLE EMI FILTER	
	2	RDN TO COMP FMT & ADDED .015 TOL 3 PLCS. S.M. 02-28-02		Drawn S.M. 02-28-02 Scale 4 X	
	3	NOTE 1 ADDED, & STEEL WAS BRASS, & TITLE REVISED L.E. 06-25-02		Approved T.C. 02-28-02	
	4	ADDED NOTES 1-2. S.M. 10-06-05		A 4251-002	
6667 20020415-1-01 20020415-1-01 20050927-7-04			--TOLERANCES-- Unless Otherwise Specified DECIMAL ± .031 [0.79] ANGLES ±		
TUCSON, ARIZONA			TUCSON, ARIZONA		