



Chipsmall Limited consists of a professional team with an average of over 10 year of expertise in the distribution of electronic components. Based in Hongkong, we have already established firm and mutual-benefit business relationships with customers from,Europe,America and south Asia,supplying obsolete and hard-to-find components to meet their specific needs.

With the principle of “Quality Parts,Customers Priority,Honest Operation,and Considerate Service”,our business mainly focus on the distribution of electronic components. Line cards we deal with include Microchip,ALPS,ROHM,Xilinx,Pulse,ON,Everlight and Freescale. Main products comprise IC,Modules,Potentiometer,IC Socket,Relay,Connector.Our parts cover such applications as commercial,industrial, and automotives areas.

We are looking forward to setting up business relationship with you and hope to provide you with the best service and solution. Let us make a better world for our industry!



Contact us

Tel: +86-755-8981 8866 Fax: +86-755-8427 6832

Email & Skype: info@chipsmall.com Web: www.chipsmall.com

Address: A1208, Overseas Decoration Building, #122 Zhenhua RD., Futian, Shenzhen, China



©1960 BY AMP INCORPORATED. ALL RIGHTS RESERVED. AMP PRODUCTS COVERED BY PATENTS AND/OR PATENTS PENDING.

NUMBER 42575

SLEEVE-MATL:
NYLON

SLEEVE-COLOR
SEE TABLE

$\pm .008$
.061 TAPER PER
INCH ON DIA.

$\pm .010$
.095
DIA.

$\pm .0015$
.0560 DIA.

.025

$\pm .010$
.240

$\pm .030$
.715

.103 - .110 DIA. TO A MIN.
DEPTH OF .090.

.167 DIA. (REF.)

TAPER PIN MATL.
BRASS.

ASSEMBLY BEFORE CRIMPING

.053 MIN. DIA.

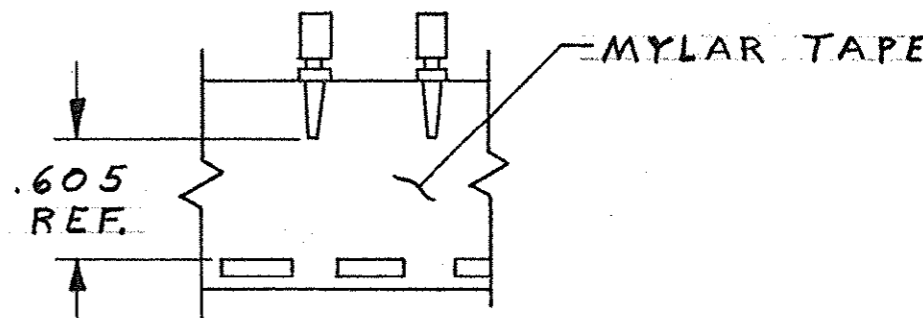
IDENTIFICATION MARK
2 DOTS

.600
MAX. INSTALLED EXTENSION

CRIMPED VERSION

REVISIONS				
ZONE	LTR	DESCRIPTION	DATE	APPROVED
	N-1	REDRAWN AND REVISED 1678	3-25-8	M.S. J.H.
3A	P	LOC SWASAB, DIST 12 WAS 39 ^{ECN 5347}	11-7-72	JP
3B	R	ADDED 1-42575-0 ECN 7986	2-25-75	CFB
	S	BRIGHT TIN-LEAD WAS TIN EA 1818	6-18-81	DS
	T	SLEEVE COLOR WAS WHITE ECN 52545	11-15-83	DS
	U	OBSOLETE - 5 & 9 ECN 52954	2-19-85	JM
	V	OBSOLETE - 7 & 1-0 ECN 53379	11-22-86	RS
	W	REV PER DF-0257	1-16-88	MS
	Y	REV PER OH14-0139-05	1-26-06	PY RW

1. INS. RANGE: .060 - .100 DIA.
WIRE RANGE: 20-18



TAPE MOUNTED ASSY. NO'S.
42575-6 THRU 1-42575-0.

PART NO.	FINISH	SLEEVE-COLOR
5-42575-1	.0001 MATTE TIN	NATURAL
OBS 1-42575-0	.0001 GOLD OVER .0001 NICKEL	
OBS 42575-9	.0002 GOLD OVER .000050 NICKEL	
42575-8	.000030 GOLD OVER .000050 NICKEL	
OBS 42575-7	SILVER - .0002 THK.	
42575-6	BRIGHT TIN-LEAD .0002 THK	
OBS 42575-5	.0002 GOLD OVER .000050 NICKEL	
42575-4	.0001 GOLD OVER .0001 NICKEL	
42575-3	.000030 GOLD OVER .000050 NICKEL	
OBS 42575-2	SILVER - .0002 THK.	
42575-1	BRIGHT TIN-LEAD .0002 THK	SLEEVE-COLOR

UNLESS OTHERWISE SPECIFIED DIM. ARE IN INCHES. TOLERANCES ON: DECIMALS $\pm .015$ ANGLES \pm

MATERIAL: SEE CALLOUT
HEAT TREAT: FINISH SEE TABLE

CONTRACT NO. OR *M. Smith* 3-22-68
CHKD *S. Heide* 5/16/68
APPD *Rossett* 5/16/68
DSGN APPD *W. F. ...* 5-16-68
OTHER APPD

AMP AMP INCORPORATED HARRISBURG, PENNSYLVANIA

NAME: PIN, TAPER, "53" SERIES P.I.D.G.

SIZE: B CODE IDENT NO.: 00779 NUMBER: 42575

SCALE: 8-1 WT. CALC. ACTUAL SHEET: —

AMP INFO
5300 LOC DF PRINT DIST