



Chipsmall Limited consists of a professional team with an average of over 10 year of expertise in the distribution of electronic components. Based in Hongkong, we have already established firm and mutual-benefit business relationships with customers from,Europe,America and south Asia,supplying obsolete and hard-to-find components to meet their specific needs.

With the principle of "Quality Parts,Customers Priority,Honest Operation,and Considerate Service",our business mainly focus on the distribution of electronic components. Line cards we deal with include Microchip,ALPS,ROHM,Xilinx,Pulse,ON,Everlight and Freescale. Main products comprise IC,Modules,Potentiometer,IC Socket,Relay,Connector.Our parts cover such applications as commercial,industrial, and automotives areas.

We are looking forward to setting up business relationship with you and hope to provide you with the best service and solution. Let us make a better world for our industry!



Contact us

Tel: +86-755-8981 8866 Fax: +86-755-8427 6832

Email & Skype: info@chipsmall.com Web: www.chipsmall.com

Address: A1208, Overseas Decoration Building, #122 Zhenhua RD., Futian, Shenzhen, China

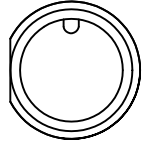


QUOTATION/SAMPLE DRAWING

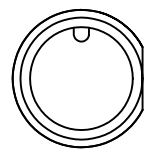
PART NUMBER:

NOTES & SPECIFICATIONS:

- EPOXY SEAL: YES/NO
- CUSTOMER PART NO.: _____ REV. _____

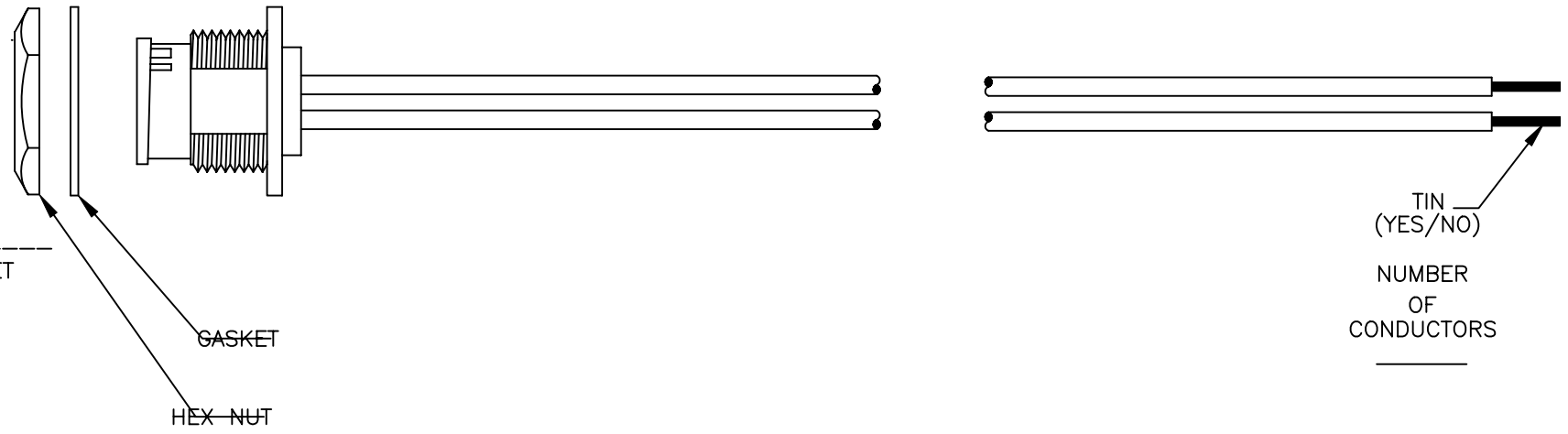


RIGHT FLAT (OPTIONAL)



FACE VIEW

CONTACT SIZE # _____
PIN/SOCKET



TIN _____
(YES/NO)

NUMBER OF CONDUCTORS _____

- MEGA-CON-X
- MAXI-CON-X
- MULTI-CON-X
- MINI-CON-X
- MICRO-CON-X

WIRE INFORMATION	
PART NO.:	
WIRE O.D.:	
JKT COLOR:	
JKT MATERIAL:	

STRANDING:	AGENCY APPROVALS	
TINNED:	CABLE/WIRE	ASSEMBLY
SHIELD: NO	UL:	
GAUGE:	CSA:	
OTHER:	OTHER:	

WIRE COLOR CODE									
PIN #1	PIN #2	PIN #3	PIN #4	PIN #5	PIN #6	PIN #7	PIN #8	PIN #9	PIN #10
PIN #11	PIN #12	PIN #13	PIN #14	PIN #15	PIN #16	PIN #17	PIN #18	PIN #19	PIN #20

DO NOT SCALE PRINT		REV.	DATE	DESCRIPTION	INIT.
NOTICE - All information illustrated or revealed on this document is proprietary, and is the exclusive property of the CONXALL CORPORATION. Unauthorized duplication or distribution of the information contained in this document is prohibited.		DRAWN BY: G.A. DATE: 8/10/94		601 E. WILDWOOD VILLA PARK, IL 60181	
		CHECKED BY:			
		APPROVED BY:		TITLE: MULTI-CON-X MINI-CON-X MICRO-CON-X MEGA-CON-X MAXI-CON-X	
UNLESS OTHERWISE SPECIFIED ALL UNITS ARE IN FEET, INCHES, AND FRACTIONS OF INCHES.		SCALE: NTS	SIZE: A	SHEET: 1 OF 1	CUSTOMER: _____
		FILE: QUOTE11	DISK: _____	PART NUMBER: _____	