



Chipsmall Limited consists of a professional team with an average of over 10 year of expertise in the distribution of electronic components. Based in Hongkong, we have already established firm and mutual-benefit business relationships with customers from,Europe,America and south Asia,supplying obsolete and hard-to-find components to meet their specific needs.

With the principle of “Quality Parts,Customers Priority,Honest Operation,and Considerate Service”,our business mainly focus on the distribution of electronic components. Line cards we deal with include Microchip,ALPS,ROHM,Xilinx,Pulse,ON,Everlight and Freescale. Main products comprise IC,Modules,Potentiometer,IC Socket,Relay,Connector.Our parts cover such applications as commercial,industrial, and automotives areas.

We are looking forward to setting up business relationship with you and hope to provide you with the best service and solution. Let us make a better world for our industry!



## Contact us

Tel: +86-755-8981 8866 Fax: +86-755-8427 6832

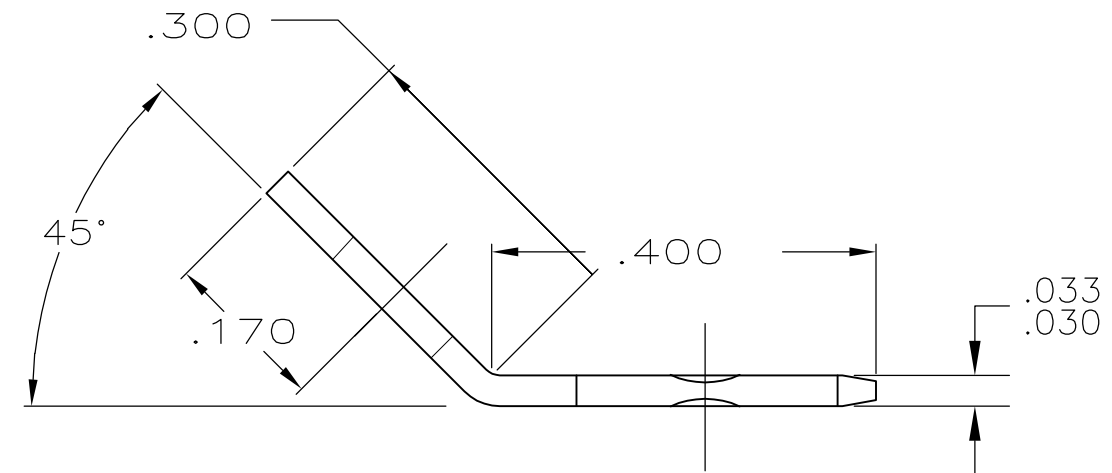
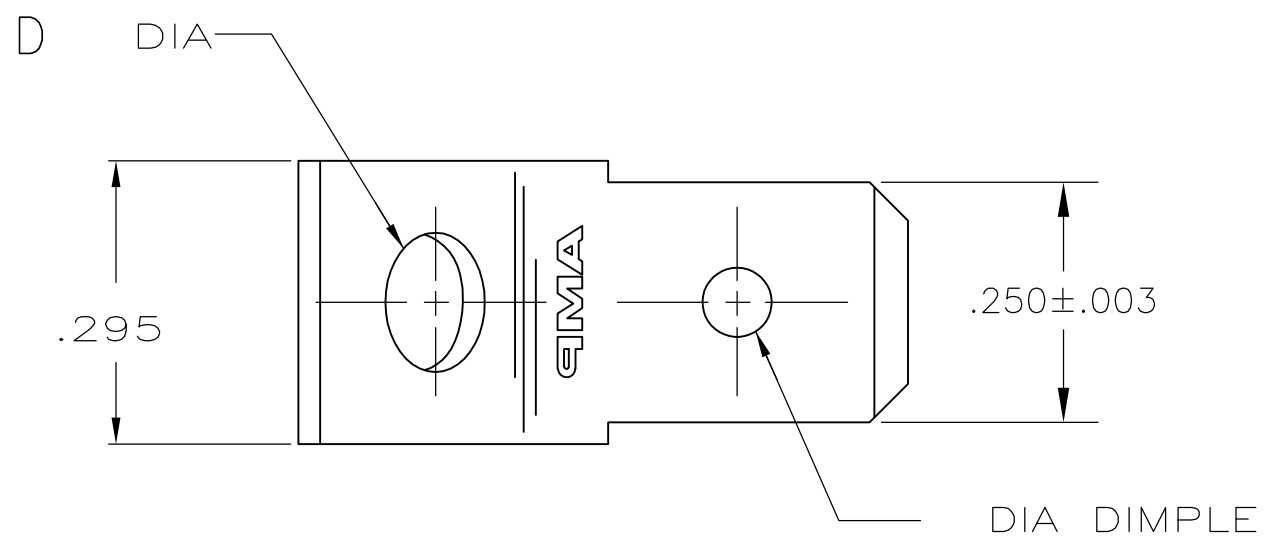
Email & Skype: info@chipsmall.com Web: www.chipsmall.com

Address: A1208, Overseas Decoration Building, #122 Zhenhua RD., Futian, Shenzhen, China



THIS DRAWING IS UNPUBLISHED. RELEASED FOR PUBLICATION  
 © COPYRIGHT - By - ALL RIGHTS RESERVED.

LOC	DIST	REVISIONS			
P	LTR	DESCRIPTION	DATE	DWN	APVD
AF	50	R2	REVISED PER ECO-11-016141	09AUG11	JR PD



- 1 SUPPLIED IN LOOSE PIECE FORM.
- △2 FOREIGN PRODUCTION ONLY.
- △3 TIN PLATE
- △4 .000150 MIN SILVER PLATE
- △5 .000015 MIN GOLD OVER .000050 MIN NICKEL
- △6 .000030 MIN GOLD OVER .000050 MIN NICKEL
- △7 PRELIMINARY - NOT FOR PRODUCTION

	1/2 HARD STAINLESS STEEL	-	.145 ±.005	42822-8
	082 BRASS	△6	.145 ±.005	△7 42822-7
	082 BRASS	△5	.145 ±.005	△7 42822-6
OBSOLETE	082 BRASS		.145 ±.005	△2 42822-5
	082 BRASS	△3	.145 ±.005	42822-4
OBSOLETE	082 BRASS	△4	.130 ±.005	42822-3
	082 BRASS	△3	.130 ±.005	42822-2
OBSOLETE	082 BRASS		.130 ±.005	42822-1
	MATERIAL	FINISH	D DIM	PART NO

THIS DRAWING IS A CONTROLLED DOCUMENT.		DWN	JR RUTH	6/7/91	<b>STE</b> TE Connectivity											
DIMENSIONS: INCHES		CHK	MS FEHER	6/7/91												
TOLERANCES UNLESS OTHERWISE SPECIFIED:		APVD	R BEAVER	6/7/91												
<table border="0"> <tr><td>0 PLC</td><td>± -</td></tr> <tr><td>1 PLC</td><td>± -</td></tr> <tr><td>2 PLC</td><td>± -</td></tr> <tr><td>3 PLC</td><td>± .015</td></tr> <tr><td>4 PLC</td><td>± -</td></tr> <tr><td>ANGLES</td><td>± -</td></tr> </table>		0 PLC	± -	1 PLC		± -	2 PLC	± -	3 PLC	± .015	4 PLC	± -	ANGLES	± -	NAME	
0 PLC	± -															
1 PLC	± -															
2 PLC	± -															
3 PLC	± .015															
4 PLC	± -															
ANGLES	± -															
MATERIAL SEE TABLE		FINISH SEE TABLE		PRODUCT SPEC	SIZE	CAGE CODE	DRAWING NO	RESTRICTED TO								
				APPLICATION SPEC	A3	00779	C-42822	-								
				WEIGHT	CUSTOMER DRAWING		SCALE	SHEET								
							5:1	1 OF 1								
								REV R2								