



Chipsmall Limited consists of a professional team with an average of over 10 year of expertise in the distribution of electronic components. Based in Hongkong, we have already established firm and mutual-benefit business relationships with customers from,Europe,America and south Asia,supplying obsolete and hard-to-find components to meet their specific needs.

With the principle of "Quality Parts,Customers Priority,Honest Operation,and Considerate Service",our business mainly focus on the distribution of electronic components. Line cards we deal with include Microchip,ALPS,ROHM,Xilinx,Pulse,ON,Everlight and Freescale. Main products comprise IC,Modules,Potentiometer,IC Socket,Relay,Connector.Our parts cover such applications as commercial,industrial, and automotives areas.

We are looking forward to setting up business relationship with you and hope to provide you with the best service and solution. Let us make a better world for our industry!



Contact us

Tel: +86-755-8981 8866 Fax: +86-755-8427 6832

Email & Skype: info@chipsmall.com Web: www.chipsmall.com

Address: A1208, Overseas Decoration Building, #122 Zhenhua RD., Futian, Shenzhen, China



INTERCONNECTS

SERIES 329, 340, 406, 414, 429 • .100" GRID SURFACE MOUNT HEADERS AND SOCKETS • SINGLE AND DOUBLE ROW STRIPS

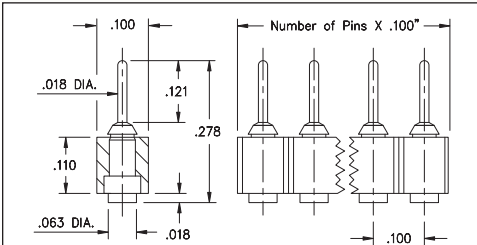


FIG. 1

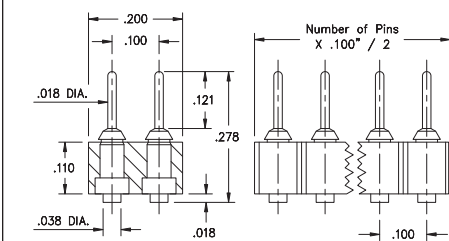


FIG. 2

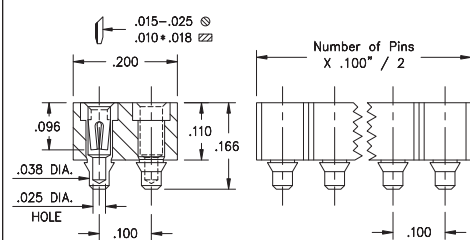
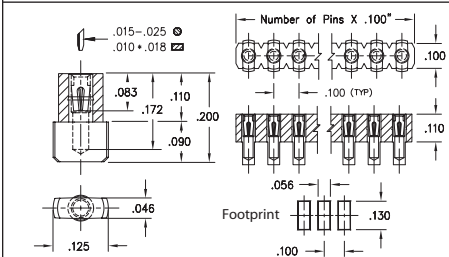


FIG. 3



Coplanarity .005". For pin counts >24 positions, consult Technical Support.

FIG. 4

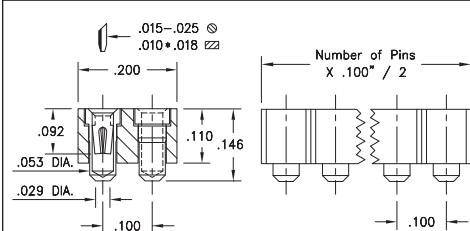
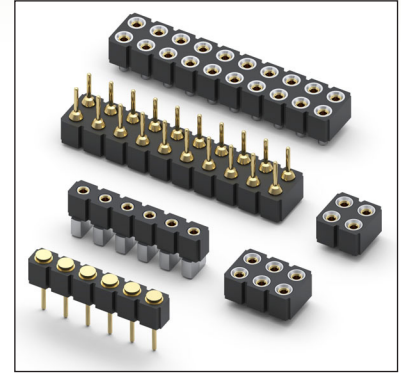


FIG. 5

- Series 329 and 429 pin interconnects feature space saving, pad style SMT termination using MM #2956-X pins. See page 218 for details
- Series 429 and 414 combine for a mated height of .323"
- Series 340, 406 and 414 surface mount sockets use MM #4078, #0668 and #1434 receptacles. See pages 162, 164 and 167 for details
- Series 340, 406 and 414 receptacles use Hi-Rel, 4-finger BeCu #30 contacts rated at 3 amps. Receptacles accept .015"-.025" diameter pins. See page 253 for details
- Insulators are high temperature thermoplastic, suitable for all soldering operations



ORDERING INFORMATION

FIG. 1	Series 329...560	Single Row Surface Mount Pin Header				
	329-10-1__-00-560000		Specify number of pins	02-64		
FIG. 2	Series 429...560	Double Row Surface Mount Pin Header				
	429-10-2__-00-560000		Specify number of pins	04-72		
SPECIFY PLATING CODE XX=			10	◆		
Pin Plating			10 μ" Au			
FIG. 3	Series 414...117	Double Row Surface Mount Socket				
	414-XX-2__-41-117000		Specify number of pins	04-72		
FIG. 4	Series 340...780	Single Row Surface Mount Socket				
	340-XX-1__-30-780100		Specify number of pins	02-64		
FIG. 5	Series 406...068	Double Row Surface Mount Socket				
	406-43-2__-30-068000		Specify number of pins	04-20		
	Tape and Reel Packaging					
Ordering Information:			406-43-2XX-30-068001			
Available on 44mm wide tape, 355 parts per 13" reel			←			
			XX=Plating Code See Below		For Electrical, Mechanical & Environmental Data, See page 264	
SPECIFY PLATING CODE XX=			99	41	43	44
Sleeve (Pin)			200 μ" Sn/Pb	200 μ" Sn	200 μ" Sn	200 μ" Sn
Contact (Clip)			100 μ" Sn/Pb	10 μ" Au	30 μ" Au	100 μ" Sn

