



Chipsmall Limited consists of a professional team with an average of over 10 year of expertise in the distribution of electronic components. Based in Hongkong, we have already established firm and mutual-benefit business relationships with customers from,Europe,America and south Asia,supplying obsolete and hard-to-find components to meet their specific needs.

With the principle of “Quality Parts,Customers Priority,Honest Operation,and Considerate Service”,our business mainly focus on the distribution of electronic components. Line cards we deal with include Microchip,ALPS,ROHM,Xilinx,Pulse,ON,Everlight and Freescale. Main products comprise IC,Modules,Potentiometer,IC Socket,Relay,Connector.Our parts cover such applications as commercial,industrial, and automotives areas.

We are looking forward to setting up business relationship with you and hope to provide you with the best service and solution. Let us make a better world for our industry!



## Contact us

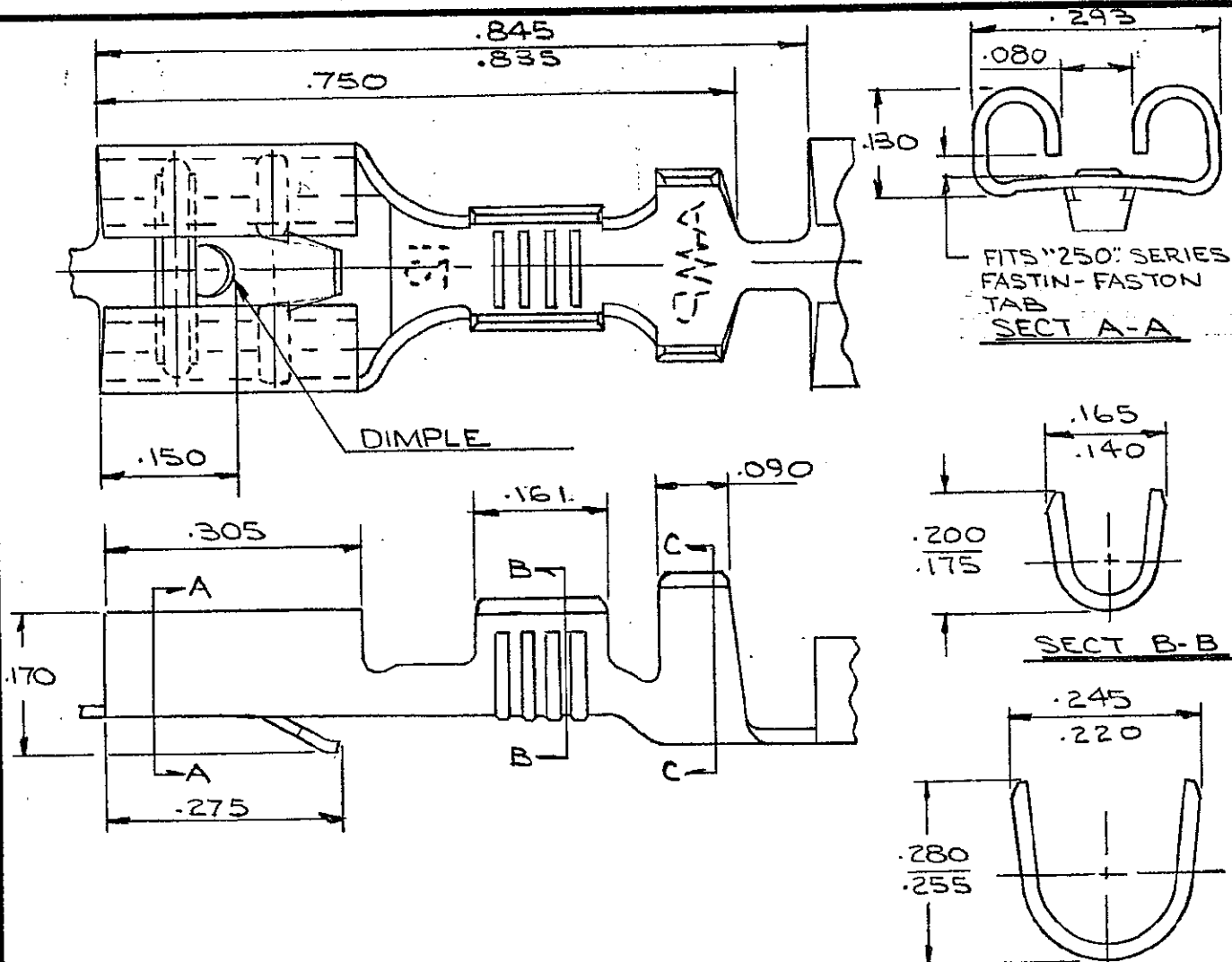
Tel: +86-755-8981 8866 Fax: +86-755-8427 6832

Email & Skype: info@chipsmall.com Web: www.chipsmall.com

Address: A1208, Overseas Decoration Building, #122 Zhenhua RD., Futian, Shenzhen, China



42904



FITS "250" SERIES  
FASTIN-FASTON  
TAB  
SECT A-A

SECT B-B

SECT C-C

CONTINUOUS STRIP, ON REELS

WIRE SIZE AWG	INSULATION RANGE	TAB THK. ±.001	MATERIAL AND FINISH	TERMINAL NUMBER
16-12	.150-.190	.032	.016 BRASS - NONE	42904-1
			.016 BRASS - TIN	42904-2
			.016 BRASS - SILVER	42904-3

SUPERSEDED BY 60249-2

PRINT LAST 50 DIMENSIONS IN INCHES. DO NOT SCALE PRINT.

E1 REV PER ECO-09-026346 KK AEG 18DEC09				©1965 BY AMP INCORPORATED, ALL RIGHTS RESERVED. AMP PRODUCTS COVERED BY PATENTS AND/OR PATENTS PENDING.		CUSTOMER COPY REFERENCE ONLY	
E OBS-3 <sup>PER</sup> 0210-0208-97 <sup>DR</sup> <sup>RE</sup> 5/14/97				MATERIAL AND FINISH		AMP INCORPORATED HARRISBURG, PENNA.	
D ADD STAMP 12 EW <sup>DR</sup> <sup>RE</sup> 5/19/97						CLASS	
C LANCE CHANGE <sup>DR</sup> <sup>RE</sup> 8/9/67						WIRE RANGE INSULATION TYPE	
B REDRAWN & REVISED CM <sup>DR</sup> <sup>RE</sup> 4/1/65				TOLERANCE EXCEPT AS NOTED ± .015 ± .1" 5-1		NO 42904	
LTR REVISION RECORD DR CHK DATE				NAME "250" SERIES FASTIN-FASTON RECEPTACLE		REV E1	
DR C. MEYERS 6-7-65				APP 6/14/65			
CHK 6-8-65 R. SWENDEL JR							