



Chipsmall Limited consists of a professional team with an average of over 10 year of expertise in the distribution of electronic components. Based in Hongkong, we have already established firm and mutual-benefit business relationships with customers from,Europe,America and south Asia,supplying obsolete and hard-to-find components to meet their specific needs.

With the principle of “Quality Parts,Customers Priority,Honest Operation,and Considerate Service”,our business mainly focus on the distribution of electronic components. Line cards we deal with include Microchip,ALPS,ROHM,Xilinx,Pulse,ON,Everlight and Freescale. Main products comprise IC,Modules,Potentiometer,IC Socket,Relay,Connector.Our parts cover such applications as commercial,industrial, and automotives areas.

We are looking forward to setting up business relationship with you and hope to provide you with the best service and solution. Let us make a better world for our industry!



Contact us

Tel: +86-755-8981 8866 Fax: +86-755-8427 6832

Email & Skype: info@chipsmall.com Web: www.chipsmall.com

Address: A1208, Overseas Decoration Building, #122 Zhenhua RD., Futian, Shenzhen, China



4

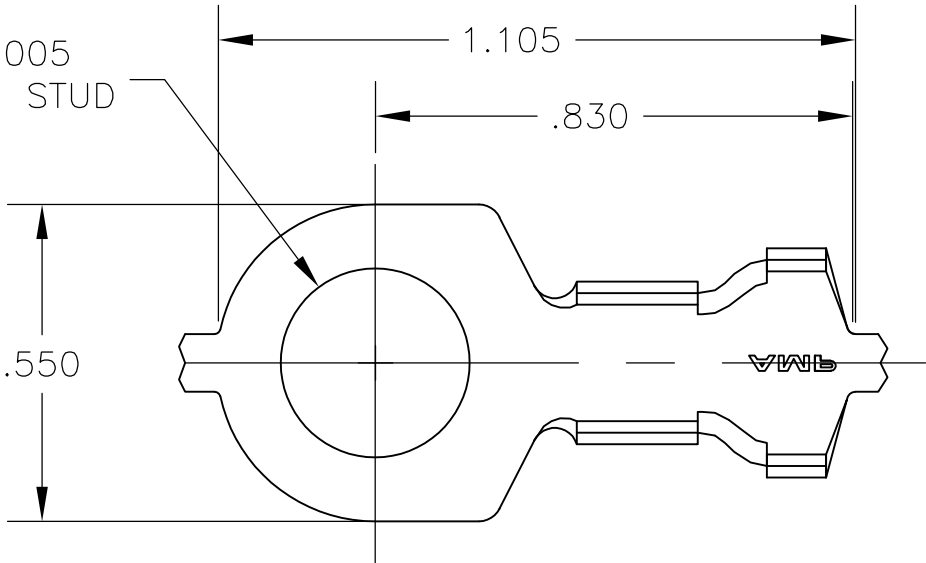
3

2

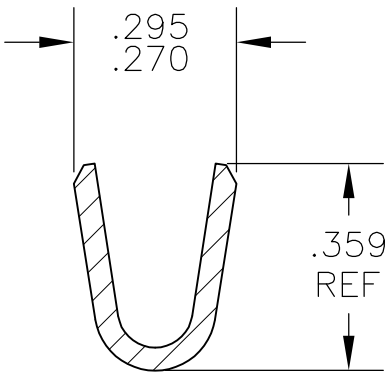
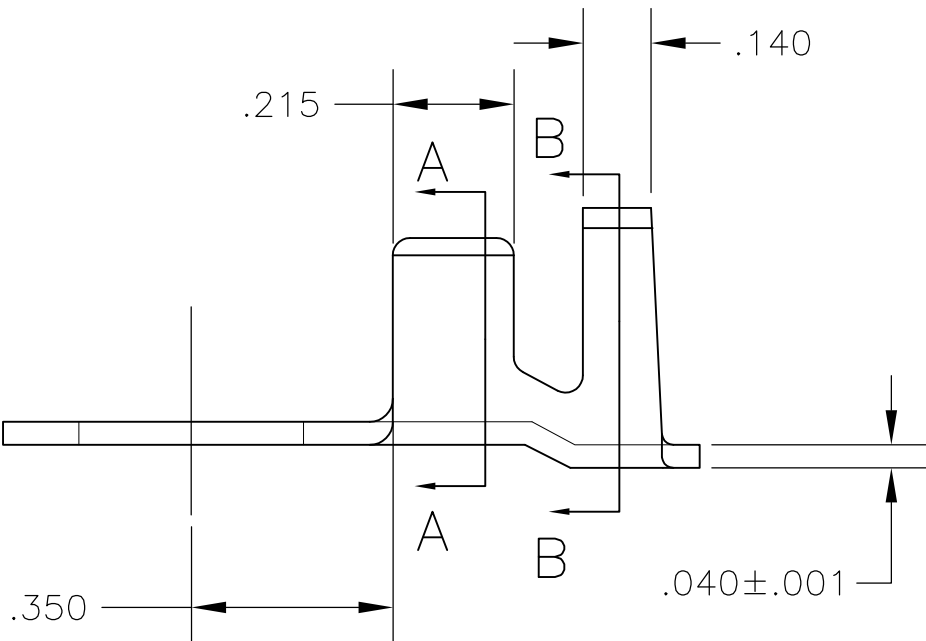
1

LOC	DIST	REVISIONS				
AF	50	P	LTR	DESCRIPTION	DATE	APVD
			R	REVISED PER ECR-10-006099	07JUL10	HMR

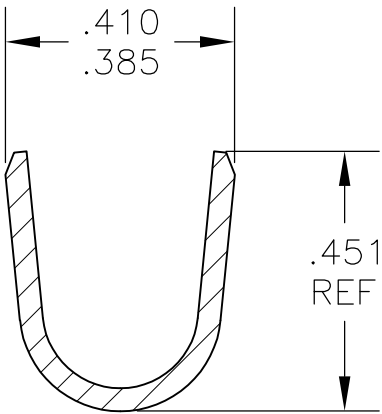
Ø.328±.005
FOR 5/16 STUD



1. CONTINUOUS STRIP ON REELS
2. WIRE SIZE IS #10-#6 AWG
3. INSULATION RANGE IS .220-.315 DIA
- △ 4 REVERSE REELED



SECTION A-A



SECTION B-B

△ 4	42913-3
	42913-2
	PART NO

THIS DRAWING IS A CONTROLLED DOCUMENT.		DWN jr ruth 08FEB05	Tyco Electronics Corporation Harrisburg, PA 17105			
DIMENSIONS: INCHES		CHK D DECKER 08FEB05				
	TOLERANCES UNLESS OTHERWISE SPECIFIED:		NAME			
	0 PLC ± - 1 PLC ± - 2 PLC ± - 3 PLC ± .015 4 PLC ± - ANGLES ± 5°		RING TONGUE			
	MATERIAL 081 BRASS		FINISH TIN			
		APVD D DECKER 08FEB05	PRODUCT SPEC			
		APPLICATION SPEC				
		WEIGHT -	SIZE A3	CAGE CODE 00779	DRAWING NO C-42913	RESTRICTED TO -
CUSTOMER DRAWING				SCALE 3:1	SHEET 1 OF 1	REV R