



Chipsmall Limited consists of a professional team with an average of over 10 year of expertise in the distribution of electronic components. Based in Hongkong, we have already established firm and mutual-benefit business relationships with customers from,Europe,America and south Asia,supplying obsolete and hard-to-find components to meet their specific needs.

With the principle of “Quality Parts,Customers Priority,Honest Operation,and Considerate Service”,our business mainly focus on the distribution of electronic components. Line cards we deal with include Microchip,ALPS,ROHM,Xilinx,Pulse,ON,Everlight and Freescale. Main products comprise IC,Modules,Potentiometer,IC Socket,Relay,Connector.Our parts cover such applications as commercial,industrial, and automotives areas.

We are looking forward to setting up business relationship with you and hope to provide you with the best service and solution. Let us make a better world for our industry!



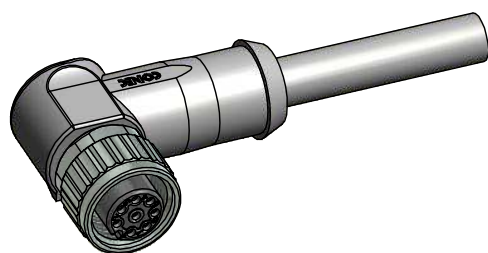
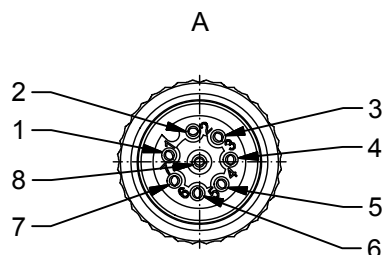
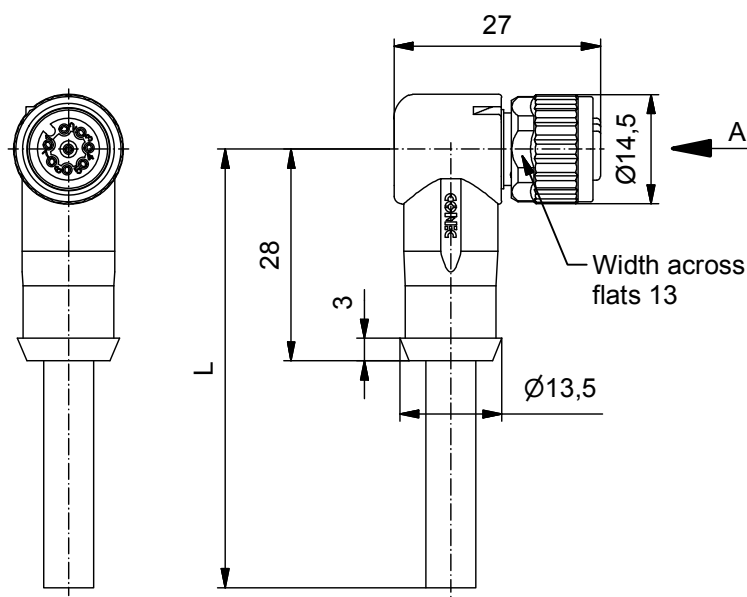
## Contact us

Tel: +86-755-8981 8866 Fax: +86-755-8427 6832

Email & Skype: [info@chipsmall.com](mailto:info@chipsmall.com) Web: [www.chipsmall.com](http://www.chipsmall.com)

Address: A1208, Overseas Decoration Building, #122 Zhenhua RD., Futian, Shenzhen, China





#### Technical specification :

Rated voltage:	8pos
IEC 61076-2-101	30 V
Current rating:	2 A at 40°C
IEC 61076-2-101	
Insulation resistance:	$\geq 100 \text{ M}\Omega$
IEC 60512	
Pollution degree:	3/2
IEC 60664-1	
Degree of protection:	IP 67, in mated condition
IEC 60529	
Temperature range:	-30°C ... +80°C
EN 60512-11-10	-40°C
EN 60512-11-4	-40°C ... +85°C
Mating cycles:	$\geq 100$
IEC 60512-9a	

#### Cable specification:

Temperatur range:	
static	-40°C ... +80°C
flexible	-25°C ... +80°C

#### Materials:

Contact:	CuZn, Ni b / Au 0,2 gal.
Contact carrier:	PA, UL 94 V-0
Sealing:	FPM
Coupling nut:	GD-Zn, Nickel plated
Moulding body:	TPU, UL 94 HB, grey

#### Installation specification:

Recommended torque:	0,6 Nm
Conec installation tool:	Torque wrench: 36-000200 Insert across flats 13: 36-000220

#### Contact assignment:

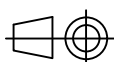
1) white	5) grey
2) brown	6) pink
3) green	7) blue
4) yellow	8) red
Shielding coupling nut	

Part no:	Description:	Length L:	Cable:
43-12431	SAL - 12S - RKW8 - 2 / G3	2m	PVC, UL 2464, grey, 8x0,25mm <sup>2</sup> Cable: 781-G32800
43-12432	SAL - 12S - RKW8 - 3 / G3	3m	
43-12433	SAL - 12S - RKW8 - 5 / G3	5m	
43-12434	SAL - 12S - RKW8 - 10 / G3	10m	
43-xxxxx	SAL - 12S - RKW8 - ... / G3	x	

DO NOT ALTER CAD DRAWING BY HAND

RoHS & REACH compliant

Index: d 29.06.16 Wil Ä6218  
moulding body contour corrected



dim. in mm

tolerance of cable: L ≤ 4m: L + 40mm  
L > 4m: L + 1%

general tolerance: 0 ± 0,50mm  
0,0 ± 0,25mm  
0,00 ± 0,10mm  
\* ± 5°

**CONEC**®

THIS DRAWING MAY NOT BE COPIED OR REPRODUCED IN ANY WAY, AND MAY NOT BE PASSED ON TO A THIRD PARTY WITHOUT WRITTEN PERMISSION. OWNERSHIP AND COPYRIGHT OF CONEC GmbH

title:

Female connector M12x1 angled,  
360°-shielding

dwg no:

43K1A760

part no:

see table