



Chipsmall Limited consists of a professional team with an average of over 10 year of expertise in the distribution of electronic components. Based in Hongkong, we have already established firm and mutual-benefit business relationships with customers from,Europe,America and south Asia,supplying obsolete and hard-to-find components to meet their specific needs.

With the principle of “Quality Parts,Customers Priority,Honest Operation,and Considerate Service”,our business mainly focus on the distribution of electronic components. Line cards we deal with include Microchip,ALPS,ROHM,Xilinx,Pulse,ON,Everlight and Freescale. Main products comprise IC,Modules,Potentiometer,IC Socket,Relay,Connector.Our parts cover such applications as commercial,industrial, and automotives areas.

We are looking forward to setting up business relationship with you and hope to provide you with the best service and solution. Let us make a better world for our industry!



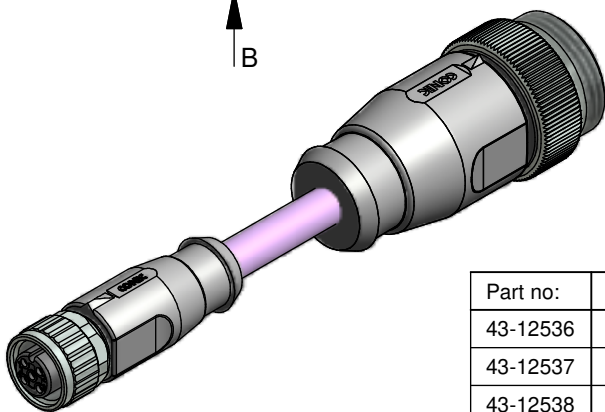
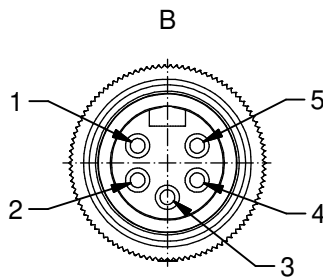
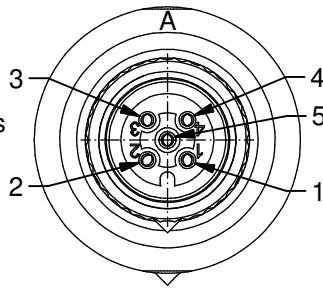
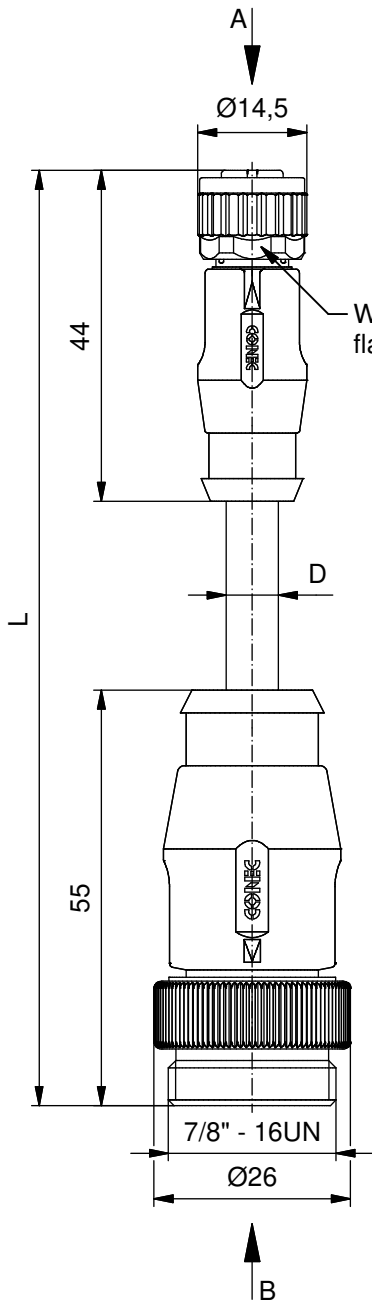
Contact us

Tel: +86-755-8981 8866 Fax: +86-755-8427 6832

Email & Skype: info@chipsmall.com Web: www.chipsmall.com

Address: A1208, Overseas Decoration Building, #122 Zhenhua RD., Futian, Shenzhen, China





Technical specification:

Rated voltage:	60 V
Current rating:	4 A at 40°C
Insulation resistance: IEC 60512	>=100 MΩ
Pollution degree: IEC 60664-1	3/2
Degree of protection: IEC 60529	IP 67, in mated condition
Temperature range: IEC 60664-1	-20°C ... +80°C
Mating cycles: IEC 60512-9a	>=100

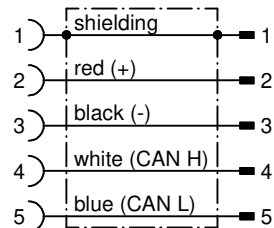
Materials:

Contact:	CuZn
Contact plating:	Nickel, gold plated
Contact carrier M12x1:	TPU GF, UL 94
Contact carrier 7/8":	TPU, UL 94
Sealing M12x1:	FPM
Coupling nut M12x1:	GD-Zn, nickel plated
Coupling screw 7/8":	CuZn, nickel plated
Moulding body:	TPU, UL 94, grey

Installation specification M12x1:

Recommended torque:	0,6 Nm
Conec installation tool:	Torque wrench: 36-000200 Insert across flats 13: 36-000220

Contact assignment:



Part no:	Description:	Length L:	Cable:
43-12536	SAL - DN - 12 - RK5.3 - 7/8 - RS5.3 - 0,3 / GJ	0,3m	TPU, UL, violet, 2xAWG22 + 2xAWG24, flexible installation Cable: 781-GJ0400
43-12537	SAL - DN - 12 - RK5.3 - 7/8 - RS5.3 - 0,6 / GJ	0,6m	
43-12538	SAL - DN - 12 - RK5.3 - 7/8 - RS5.3 - 1,5 / GJ	1,5m	
43-12539	SAL - DN - 12 - RK5.3 - 7/8 - RS5.3 - 3 / GJ	3m	
43-xxxxx	SAL - DN - 12 - RK5.3 - 7/8 - RS5.3 - ... / GJ	x	

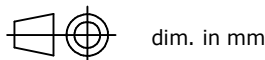
D see data sheet cable

DO NOT ALTER CAD DRAWING BY HAND
Directive 2002/95/EC RoHS compliant

Index: a 14.03.2011 VF Ä3767
Coupling nut modified, spanner flats added, data sheet modified

tolerance of cable: L ≤ 4m: L + 40mm
L > 4m: L + 1%

THIS DRAWING MAY NOT BE COPIED OR REPRODUCED IN ANY WAY, AND MAY NOT BE PASSED ON TO A THIRD PARTY WITHOUT WRITTEN PERMISSION.
OWNERSHIP AND COPYRIGHT OF CONEC GmbH



	date	name
drawn	06.11.08	Mankopf
appd.	06.11.08	Fromm



title:
Connecting cable, female connector M12x1 axial - male connector 7/8" axial, DeviceNet

dwg no:

43K1A799

part no:

see table