



Chipsmall Limited consists of a professional team with an average of over 10 year of expertise in the distribution of electronic components. Based in Hongkong, we have already established firm and mutual-benefit business relationships with customers from,Europe,America and south Asia,supplying obsolete and hard-to-find components to meet their specific needs.

With the principle of “Quality Parts,Customers Priority,Honest Operation,and Considerate Service”,our business mainly focus on the distribution of electronic components. Line cards we deal with include Microchip,ALPS,ROHM,Xilinx,Pulse,ON,Everlight and Freescale. Main products comprise IC,Modules,Potentiometer,IC Socket,Relay,Connector.Our parts cover such applications as commercial,industrial, and automotives areas.

We are looking forward to setting up business relationship with you and hope to provide you with the best service and solution. Let us make a better world for our industry!



Contact us

Tel: +86-755-8981 8866 Fax: +86-755-8427 6832

Email & Skype: info@chipsmall.com Web: www.chipsmall.com

Address: A1208, Overseas Decoration Building, #122 Zhenhua RD., Futian, Shenzhen, China



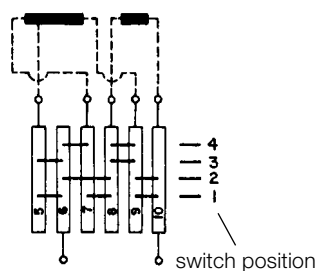
ACCESSORIES

VOLTAGE SELECTOR INSERTS	2
FUSE DRAWER "EXTRA-SAFE"	3
CONNECTION WITH STRANDED CABLE	4
BOWDEN CABLE	5
INSULATING COVER	6
CORD RETAINING KITS	7

**Voltage selector inserts
for Power Entry Modules, types KE, CE, KG, CG**

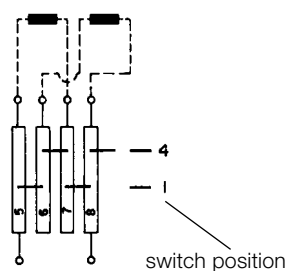


System No. 1



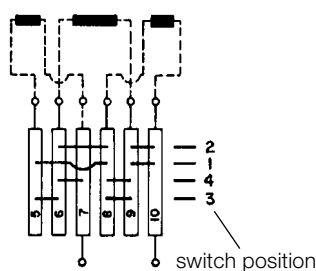
2 separate windings one with a tap
3 or 4 switch positions

System No. 2



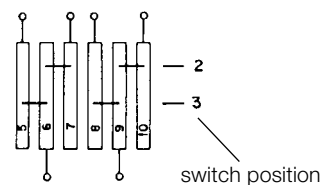
2 separate windings
2 switch positions

System No. 3



3 separate windings
3 or 4 switch positions

System No. 4



2-pole change-over switch

Order Numbers for voltage selector insert for Power Entry Modules, types KE, CE, KG, CG

	System No.	Voltage marking, switch position				Schematic	Switch position	
		1	2	3	4			
4305.0048.00	1,2	without marking						
4305.0048.01	1	100	120	220	240			
4305.0048.03	2	110		220				
4305.0048.05	2	115		230				
4305.0048.10	1	100	115		230			
4305.0050.00	3	without marking						
4305.0050.02	3	130	110	240	220			
4305.0050.04	3	110		240				220
4305.0050.06	3	150	110		220			
4305.0049.00	4	without marking						
4305.0049.07	4	220		011				
4305.0049.17	4	115		230				
4305.0049.19	4	032		011				

Other voltage markings on request

**Fuse drawer «Extra-Safe»
for Power Entry Modules, types KE, CE, KG, CG**



Medical
Fuse drawer

Order Numbers

for fuses 5 x 20 mm		for fuses 6,3 x 32 mm			
		2-pole with shorting bar in the neutral side			2-pole with shorting bar in the neutral side
1-pole	2-pole			1-pole	2-pole
4305.0006	4305.0001	4305.0021		4305.0016	4305.0011
					4305.0026

Order Numbers fuse drawer (Fingergrip and Extra-Safe) (to types KEA, KEA-Print, KFA, KM)

Voltage markings	for types	Type	Type		1-pole + spare fuse case	2-pole with shorting bar in the neutral side
			1-pole	2-pole		
«XX» see table 1	KEA, KFA	Fingergrip	4301.1214.XX	4301.1014.XX	4301.2814.XX	4301.3536.XX
«XX»		Extra-Safe	4301.1224.XX	4301.1024.XX	4301.2824.XX	4301.3537.XX
without voltage selector	KEA, KEA-Print, KFA (KM*)	Fingergrip	4301.1405	4301.1401	4301.1409	4301.1413
without voltage selector	KEA, KEA-Print, KFA (KM*)	Extra-Safe	4301.1407	4301.1403	4301.1411	4301.1415

* only 1-/2-pole

Table 1

Index XX	Voltage markings/terminal no			
	1	2	3	4
01	110	150	220	-
02	120	-	240	-
03	110	-	220	-
04	115	-	220	-
05	110	-	230	-
06	115	-	230	-
07	100	110	220	240
08	100	120	220	240
09	110	-	117	-
10	220	-	240	-
11	120	220	240	-
12	110	220	240	-

Table 1

Index XX	Voltage markings/terminal no			
	1	2	3	4
13	115	220	240	-
14	-	-	-	-
15	100	120	220	-
16	50 Hz	-	60 Hz	-
17	220	-	110	-
18	110	240	220	-
19	117	220	240	-
20	100	110	127	230
21	110	120	220	-
22	110	220	230	-
23	100	115	220	240
24	115	230	240	-

Other versions on request:

- for protection class II
- KEA with solder terminals
- Fuse drawer with other voltage values

Order Numbers for fuse drawer (Fingergrip and Extra-Safe) (to types KEC, KFC, KD, CD)

Voltage markings Terminal no.	Type	5 x 20 mm		2-pole with shorting bar in the neutral side	6,3 x 32 mm		2-pole with shorting bar in the neutral side
		1-pole	2-pole		1-pole	2-pole	
«YY» see following table	Fingergrip	4303.2114.YY	4303.2014.YY	4303.2036.YY	4303.2614.YY	4303.2514.YY	4303.2536.YY
«YY»	Extra-Safe	4303.2124.YY	4303.2024.YY	4303.2037.YY	4303.2624.YY	4303.2524.YY	4303.2537.YY
without voltage selector	Fingergrip	4303.2406	4303.2401	4303.2411	4303.2906	4303.2901	4303.2911
without voltage selector	Extra-Safe	4303.2408	4303.2403	4303.2413	4303.2908	4303.2903	4303.2913

Index	Voltage markings/terminal no					KEC KD
	1	2	3	4	6	
YY	3	4	5	6		
00	–	–	–	–		
01	100	120	220	240		
02	110	150	220	–		
03	110	–	220	–		
04	110	220	240	–		
05	115	–	230	–		
06	117	220	240	–		
07	100	117	220	–		
08	110 V	–	220 V	–		
09	220	–	240	–		
10	115	220	240	–		
11	110	120	220	240		

Index	Voltage markings/terminal no					KEC KD
	1	2	3	4	6	
YY	3	4	5	6		
12	115	230	240	–		
13	100	110	220	240		
14	100	117	220	240		
15	100	115	230	–		
16	100	120	230	240		
17	115	120	230	240		
18	115	–	240	–		
19	220	120	240	230		
20	100	120	230	–		
21	100	–	220	–		
22	100	120	220	230		
23	100	110	120	–		

Other versions on request:

- for protection class II
- Fuse drawer with other voltage values

Accessory connection with stranded cable for KE, CE and KG, CG (wiring of voltage selector)



Quick connect terminals
4,8 x 0,8 mm



0881.0076
(length = 70 mm)
0881.0077
(length = 100 mm)

Tap 4,8 x 0,8 mm



0881.0074
(length = 70 mm)
0881.0075
(length = 100 mm)

The connection with stranded cable has to be mounted by customer. Stand = 1,5 mm

Attention:

To guarantee the minimum air and creeping distances, use taps only for terminal

3 / 4 or N for KE, CE

2 / 3 / 4 or N for KG, CG

(concerns voltage selector system 1, 2 and 3).

Order Numbers for connection with stranded cable

Power entry modules type	Voltage selector System No. 1	Voltage selector System No. 2 and 3	Voltage selector System No. 4
KE, CE 1-pole	0881.0075	0881.0074	0881.0076
	0881.0076	0881.0075	0881.0077
KE, CE 2-pole	0881.0074	2x 0881.0074	2x 0881.0076
	0881.0076		
KG, CG 1-pole	0881.0075	0881.0074	0881.0076
	0881.0076	0881.0075	0881.0077
KG, CG 2-pole	0881.0074	2x 0881.0074	2x 0881.0076
	0881.0076		

BOWDEN CABLE

for type KD/KG, CD/CG

Order details and description

How to specify length of Bowden cable:

R Mounting parallel to direction of actuation

B1 Actuating part

B2 Power entry module

Dimensions in mm (center of mounting hole [B1], outer surface to center of mounting hole [B2], outer surface)

R	a /	b /	c /
---	-----	-----	-----

S Mounting 90° to direction of actuation

B1 Actuating part

B2 Power entry module

Dimensions in mm (center of mounting hole [B1], outer surface to center of mounting hole [B2], outer surface)

S	a /	b /	c /
---	-----	-----	-----

Ordering example

The following 3 positions are necessary to place an order:

- Order No.
socket KD14.4199.151
- Order No.
fuse drawer 4303.2024.03
- Bowden cable
(type of mounting / dimensions in mm) *R a/200 b/180 c/40

* The Order No. for a customer specific Bowden cable you'll get with the acknowledgment.

Delivery time for a customer specific Bowden cable sample approx. 2 weeks.

Standard Bowden cable sample, Order No. 0886.0101, ex stock

Remote Actuator Technology

The remote actuator cable assembly consists of a wire cable inside of a plastic insulated spiral wire casing.

Identifying a proper routing of the cable assembly is important. Deviations from line to line placement will require bends in the cable with resulting losses in the overall assembly. These inefficiencies show up as friction losses and lost motion.

Frictional losses are increases in actuation force due to losses in the assembly. Lost motion is an undesirable difference between the input end of the assembly and the output end.

The principle element of lost motion is backlash and deflection. Backlash is caused by the wire cable moving inside the casing with the change in direction of motion. It is the function of clearance between the wire cable and casing, plus the number of degrees of bend in the cable assembly. Deflection of the cable assembly, while usually low, can be minimized by anchoring the casing.

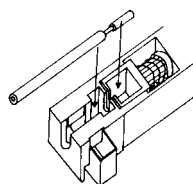
This is especially true in those applications of cable assemblies with long lengths and/or large degrees of bend in the system.

All of these losses and resulting inefficiencies can be reduced by the equipment designer through minimizing the total degrees of bend in the assembly. Because of the number of variables effecting proper operation of any remotely actuated switch assembly, it is important that the ordering instructions be used to determine proper cable length and to provide samples for customer approval.

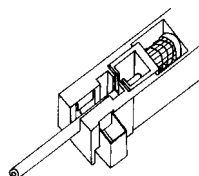
Consult figure for minimum information required to describe cable assembly application.

Bowden cable assembly instruction

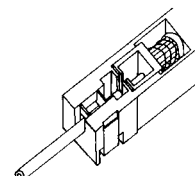
Drop Bowden barrel into seat of switch



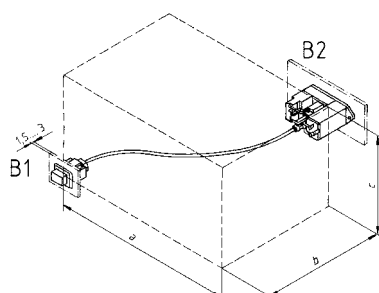
Slide clamp around cable



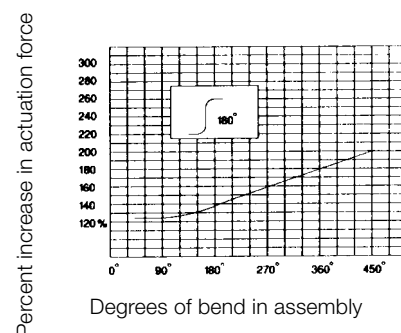
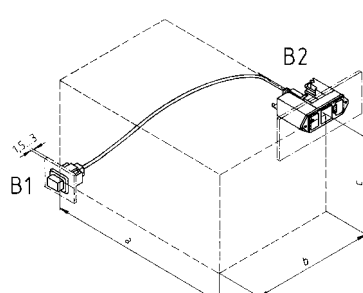
Bowden cable locked into assembly

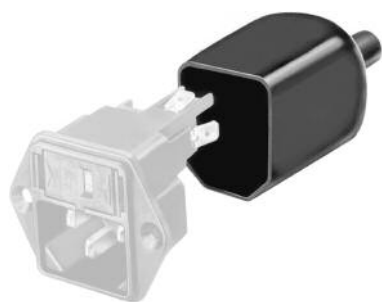


Type R



Type S





Insulating cover

The terminals of the Schurter appliance couplers can be protected against unintentional contact by the use of an insulation cover.

They are made of flexible thermoplastic (UL 94V-0, black) and can be easily mounted from the rear to the corresponding appliance couplers.

Order Numbers

Order Numbers	suitable for
0859.0047	KEA (without KEA-Print) KEB1, DC11, 6200, 6202, 6205, 6220, 4721, 4723, 4793, 4798, 6600-3, 6600-4, 4707, C20F
0859.0048	6100-3, 6100-4, 6102-3, 6102-5, 5110, FGS, KFS, KFX
0859.0072	KEC, KFC, FKH, FKI, FKHD, FKID
0859.0074	KD, 5145, 6145
0859.0075	KEB2, KFB2, 0723, 4797, DC12, KFB1, 4719, KFA, 5200, 5220
0859.0076	KE, KM, KMF, EC11, EC12
0859.0077	CD
0859.0108	CE, EC12
0859.0109	CG, KG, EF11, DF12, DF11
0859.0086	8843-FL, 8843-FLR



Cover GSF1

Order Number

0098.0078



Cord retaining kits

For protection against loosening or accidental disconnection of the plug connector. Can also be mounted later.

The correct kit type (A-M) for each combination of fixed and free components is shown in the selection chart on page 172. The corresponding Order No. for each kit type is shown in the smaller chart.

Horizontal flanged components are secured to the panel using the kit supplied. Vertical flanged or snap-in components require additional drilling for the cord retaining kit as shown in the diagrams below.

Each cord retaining kit consists of:

- 1 Stainless steel retaining clip
- 2 Nickel plated brass pillars
- 2 Nickel plated brass nuts
- 2 Nickel plated beryllium copper crinkle washers

Order Numbers

Kit type

4700.0001	A
4700.0002	B
4700.0003	C
4700.0004	D
4700.0005	E
4700.0006	F
4700.0007	G
4700.0008	H
4700.0009	J
4700.0010	K
4700.0011	L
4700.0012	M

Cut-aways or countersinks on pillars to face inwards.

Accessories

Cord retaining kits Selection Chart

Appliance inlet or outlet	Plug or connector for cable																																		
	KEA snap-in	KEA / KFA screw-on	KEB I / DC 11 / DC 12 snap-in	KEB I / KFB I / DC 11 / DC 12 screw-on	KEB II / KFB II	KEC / KFC	KD / CD	KE / OE	KG / OG	KFS / KFX	FELCOM / 54/64	4707	4721 screw-on	472x snap-in	4752	4754 / 4758	4793	4798 screw-on / C20F	5110 screw-on	5200 screw-on	5220 screw-on	6100 screw-on	6100 snap-in	6110 screw-on	6110 snap-in	6200 screw-on	6200 snap-in	6220 screw-on	6220 snap-in	6600 screw-on	6600 snap-in	0723	KM	EC, EF, EG	
4781.0000	A	B	A	B	A	A	A	A	A	C	A	B				H			C	B	B	C	A	C	A	B	A	B	A				A		
4781.0100																																			
4782.0000																																			
4782.0100																																			
4732.0000											E	D	F	F	F	F															D	F			
4735.0000											G	F	G	G	G	G															F	G			
4795.0000																	L	K																M	
4796.0000																																J			

