



Chipsmall Limited consists of a professional team with an average of over 10 year of expertise in the distribution of electronic components. Based in Hongkong, we have already established firm and mutual-benefit business relationships with customers from,Europe,America and south Asia,supplying obsolete and hard-to-find components to meet their specific needs.

With the principle of “Quality Parts,Customers Priority,Honest Operation,and Considerate Service”,our business mainly focus on the distribution of electronic components. Line cards we deal with include Microchip,ALPS,ROHM,Xilinx,Pulse,ON,Everlight and Freescale. Main products comprise IC,Modules,Potentiometer,IC Socket,Relay,Connector.Our parts cover such applications as commercial,industrial, and automotives areas.

We are looking forward to setting up business relationship with you and hope to provide you with the best service and solution. Let us make a better world for our industry!



Contact us

Tel: +86-755-8981 8866 Fax: +86-755-8427 6832

Email & Skype: info@chipsmall.com Web: www.chipsmall.com

Address: A1208, Overseas Decoration Building, #122 Zhenhua RD., Futian, Shenzhen, China





0.5-26.5 GHz

Octave Band 2- and 4-Way SMA Power Dividers

- Operation to 26.5 GHz
- Excellent Phase and Amplitude Tracking
- High Isolation Between Output Ports
- Small Size
- Operational Temperature Range:
-55° to +85°C

Specifications

SMA (F) and 2.92 mm (F), 2-Way, 0.5 to 26.5 GHz, 30 W

FREQUENCY RANGE (GHz)	MODEL	CONNECTOR	VSWR (max.)		INSERTION LOSS (dB max.)	ISOLATION (dB min.)	AMPLITUDE BALANCE (dB max.)	PHASE BALANCE (max.)	AVERAGE POWER* (W)			WEIGHT	
			INPUT	OUTPUT					A	B	C	oz.	gr.
0.5-1.0	4311B-2	SMA (F)	1.25	1.15	0.45	22	0.2	2°	30	20	3	1.1	30
1-2	4312B-2	SMA (F)	1.25	1.15	0.35	20	0.2	2°	30	20	3	0.9	23
2-4	4313B-2	SMA (F)	1.30	1.20	0.40	20	0.2	2°	30	20	3	0.8	20
4-8	4314B-2	SMA (F)	1.35	1.25	0.60	20	0.2	2°	30	20	3	0.8	20
8-12.4	4315-2	SMA (F)	1.35	1.30	0.50	20	0.2	3°	30	10	1	0.8	20
12-18	4316-2	SMA (F)	1.40	1.35	0.70	19	0.3	6°	30	10	1	0.8	20
18-26.5	4317C-2	2.92 mm (F)	2.00	2.00	1.00	15	0.5	12°	30	10	1	0.8	20

SMA (F), 4-Way, 0.5 to 18 GHz, 30 W

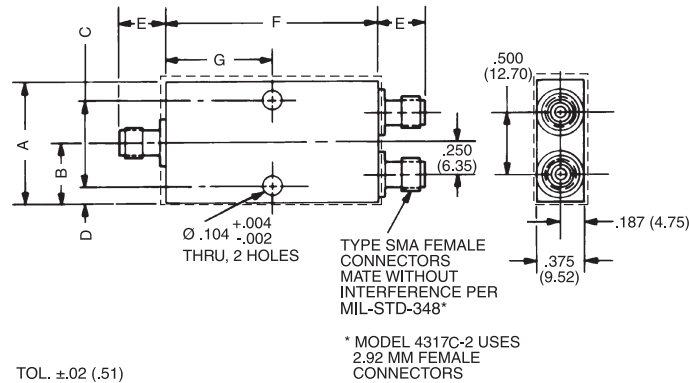
FREQUENCY RANGE (GHz)	MODEL	CONNECTOR	VSWR (max.)		INSERTION LOSS (dB max.)	ISOLATION (dB min.)	AMPLITUDE BALANCE (dB max.)	PHASE BALANCE (max.)	AVERAGE POWER* (W)			WEIGHT	
			INPUT	OUTPUT					A	B	C	oz.	gr.
0.5-1.0	4311C-4	SMA (F)	1.45	1.30	0.90	22	0.3	3°	30	10	1	2.9	80
1-2	4312C-4	SMA (F)	1.40	1.25	0.80	20	0.3	3°	30	10	3	2.0	56
2-4	4313C-4	SMA (F)	1.35	1.35	0.60	20	0.3	3°	30	10	1	2.0	56
4-8	4314B-4	SMA (F)	1.45	1.35	0.50	20	0.3	3°	30	20	3	2.7	75
8-12.4	4315-4	SMA (F)	1.45	1.35	0.80	18	0.4	4°	30	10	1	2.2	60
12-18	4316-4	SMA (F)	1.50	1.40	1.50	18	0.5	6°	30	10	1	2.2	60

* Average Power Rating into a load VSWR of (A) 1.2 to 1, (B) 2 to 1 and (C) ∞VSWR



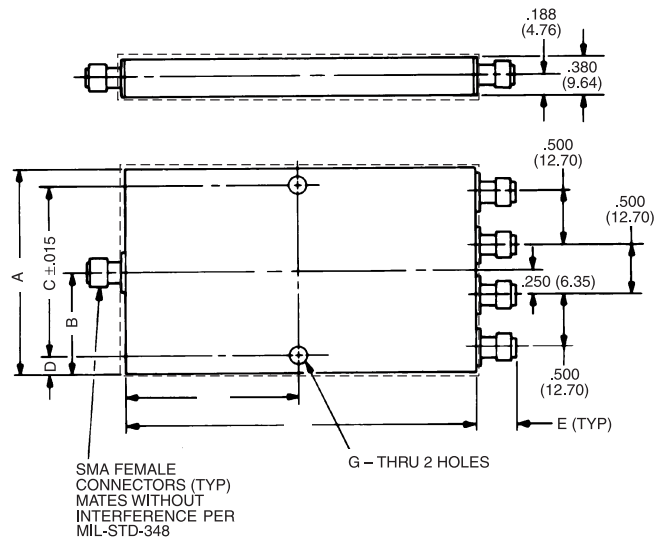
Power Dividers

Outline Drawings



OCTAVE 2-WAY POWER DIVIDERS

MODEL	A	B	C ±.015	D	E	F	G
4311B-2	1.338 (33.98)	.669 (16.99)	1.146 (29.11)	.096 (2.44)	.375 (9.52)	1.204 (30.58)	.602 (15.29)
4312B-2	1.260 (32.00)	.630 (16.00)	1.068 (27.13)	.096 (2.44)	.375 (9.52)	.875 (22.22)	.437 (11.10)
4313B-2	1.010 (25.65)	.505 (12.83)	.818 (20.78)	.096 (2.44)	.375 (9.52)	.875 (22.22)	.437 (11.10)
4314B-2	1.010 (25.65)	.505 (12.83)	.818 (20.78)	.096 (2.44)	.375 (9.52)	.875 (22.22)	.437 (11.10)
4315-2	1.000 (25.40)	.500 (12.70)	.812 (20.62)	.094 (2.39)	.375 (9.52)	.750 (19.05)	.375 (9.52)
4316-2	1.000 (25.40)	.500 (12.70)	.812 (20.62)	.094 (2.39)	.375 (9.52)	.750 (19.05)	.375 (9.52)
4317C-2	1.000 (25.40)	.500 (12.70)	.812 (20.62)	.094 (2.39)	.375 (9.52)	.600 (15.24)	.300 (7.62)



OCTAVE 4-WAY POWER DIVIDERS

MODE;	A	B	C	D	E	F	G	H
4311C-4	2.343 (59.51)	1.171 (29.74)	2.153 (54.68)	.095 (2.41)	.375 (9.52)	2.111 (53.62)	.104 +.004/-0.02	1.055 (26.79)
4312C-4	2.260 (57.40)	1.130 (28.70)	2.070 (52.57)	.095 (2.41)	.375 (9.52)	1.439 (36.55)	.104 +.004/-0.02	.719 (18.26)
4313C-4	2.260 (57.40)	1.130 (28.70)	2.070 (52.57)	.095 (2.41)	.375 (9.52)	1.439 (36.55)	.104 +.004/-0.02	.719 (18.26)
4314B-4	2.260 (57.40)	1.130 (28.70)	2.070 (52.57)	.095 (2.41)	.375 (9.52)	1.500 (38.10)	.104 +.004/-0.02	.750 (19.05)
4315-4	1.940 (49.27)	.970 (24.63)	1.688 (42.87)	.126 (3.20)	.375 (9.52)	1.418 (36.01)	.146	.709 (18.00)
4316-4	1.940 (49.27)	.970 (24.63)	1.688 (42.87)	.126 (3.20)	.375 (9.52)	1.418 (36.01)	.146	.709 (18.00)

Allow .020 for sealant build-up per surface.
Dimensions in inches (mm in parentheses), unless otherwise specified.