



Chipsmall Limited consists of a professional team with an average of over 10 year of expertise in the distribution of electronic components. Based in Hongkong, we have already established firm and mutual-benefit business relationships with customers from,Europe,America and south Asia,supplying obsolete and hard-to-find components to meet their specific needs.

With the principle of “Quality Parts,Customers Priority,Honest Operation,and Considerate Service”,our business mainly focus on the distribution of electronic components. Line cards we deal with include Microchip,ALPS,ROHM,Xilinx,Pulse,ON,Everlight and Freescale. Main products comprise IC,Modules,Potentiometer,IC Socket,Relay,Connector.Our parts cover such applications as commercial,industrial, and automotives areas.

We are looking forward to setting up business relationship with you and hope to provide you with the best service and solution. Let us make a better world for our industry!



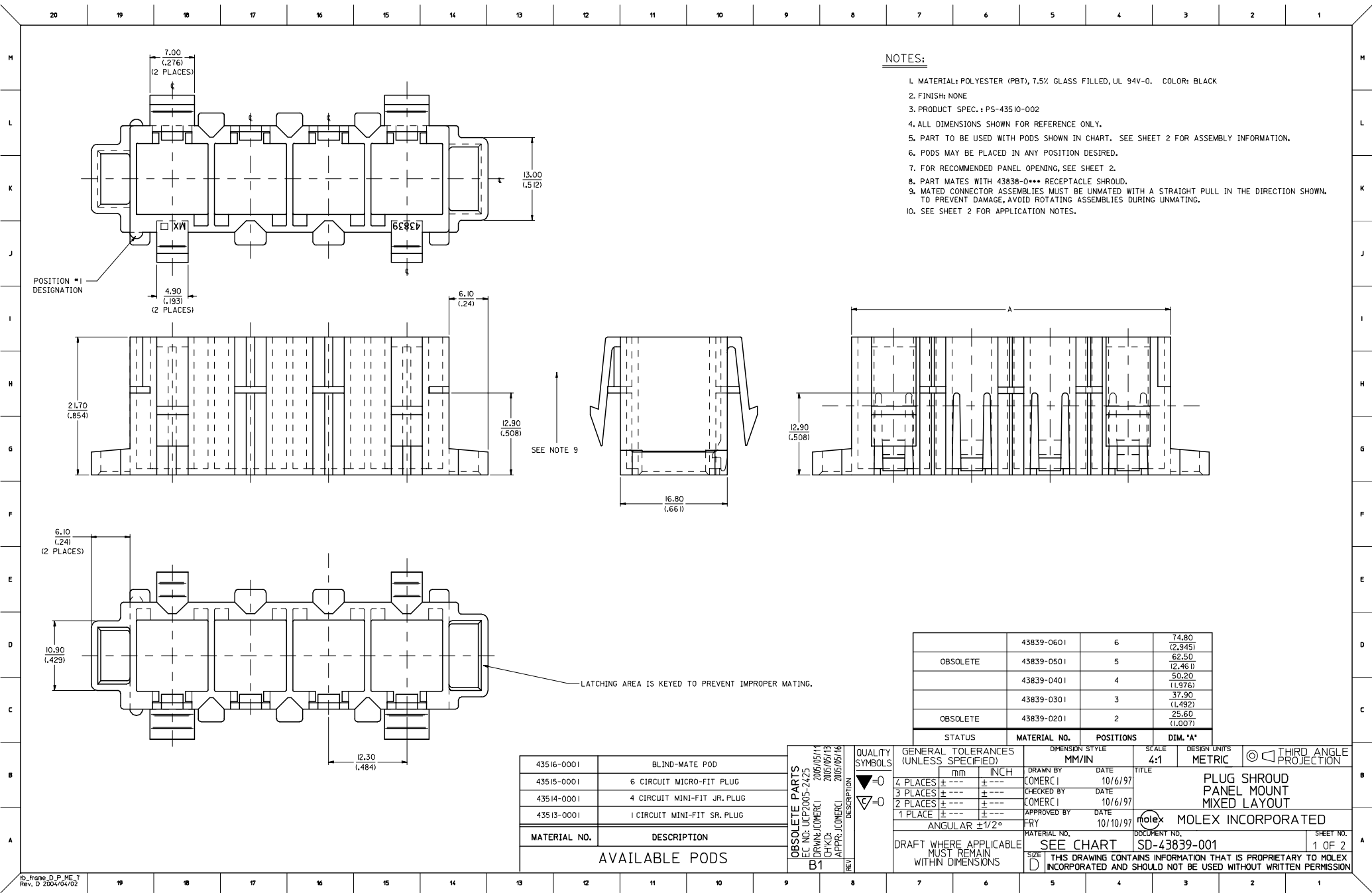
Contact us

Tel: +86-755-8981 8866 Fax: +86-755-8427 6832

Email & Skype: info@chipsmall.com Web: www.chipsmall.com

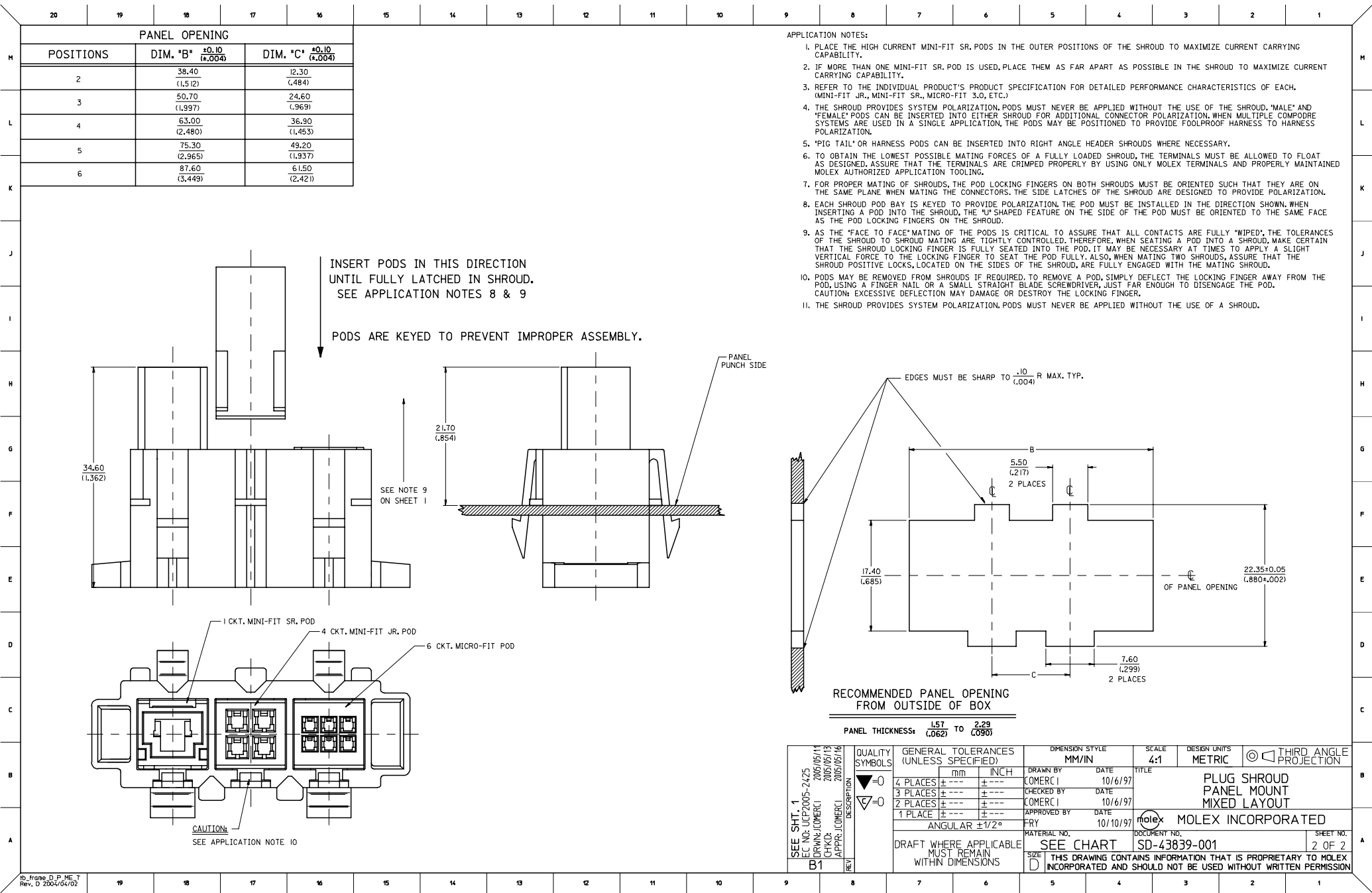
Address: A1208, Overseas Decoration Building, #122 Zhenhua RD., Futian, Shenzhen, China



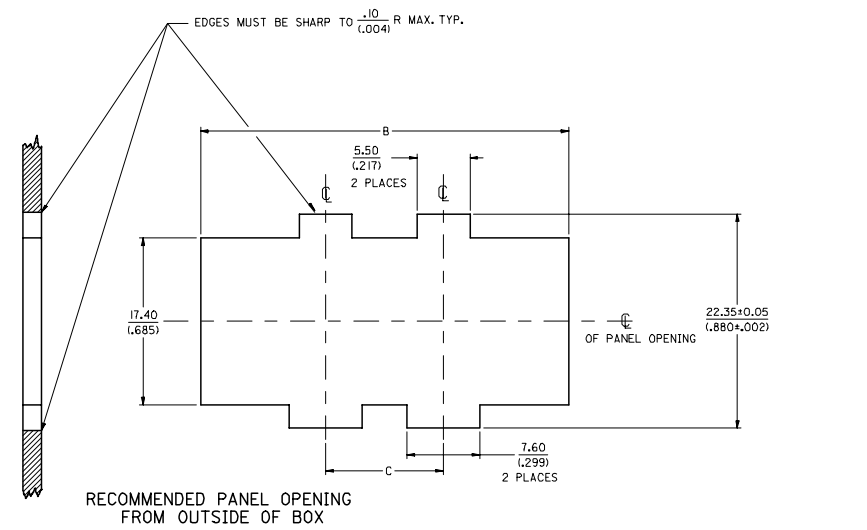


NOTES:

1. MATERIAL: POLYESTER (PBT), 7.5% GLASS FILLED, UL 94V-0. COLOR: BLACK
2. FINISH: NONE
3. PRODUCT SPEC: PS-43510-002
4. ALL DIMENSIONS SHOWN FOR REFERENCE ONLY.
5. PART TO BE USED WITH PODS SHOWN IN CHART. SEE SHEET 2 FOR ASSEMBLY INFORMATION.
6. PODS MAY BE PLACED IN ANY POSITION DESIRED.
7. FOR RECOMMENDED PANEL OPENING, SEE SHEET 2.
8. PART MATES WITH 43838-0*** RECEPTACLE SHROUD.
9. MATED CONNECTOR ASSEMBLIES MUST BE UNMATED WITH A STRAIGHT PULL IN THE DIRECTION SHOWN. TO PREVENT DAMAGE, AVOID ROTATING ASSEMBLIES DURING UNMATING.
10. SEE SHEET 2 FOR APPLICATION NOTES.



- APPLICATION NOTES:
1. PLACE THE HIGH CURRENT MINI-FIT SR. PODS IN THE OUTER POSITIONS OF THE SHROUD TO MAXIMIZE CURRENT CARRYING CAPABILITY.
 2. IF MORE THAN ONE MINI-FIT SR. POD IS USED, PLACE THEM AS FAR APART AS POSSIBLE IN THE SHROUD TO MAXIMIZE CURRENT CARRYING CAPABILITY.
 3. REFER TO THE INDIVIDUAL PRODUCT'S PRODUCT SPECIFICATION FOR DETAILED PERFORMANCE CHARACTERISTICS OF EACH. (MINI-FIT JR., MINI-FIT SR., MICRO-FIT 3.0, ETC.)
 4. THE SHROUD PROVIDES SYSTEM POLARIZATION. PODS MUST NEVER BE APPLIED WITHOUT THE USE OF THE SHROUD. 'MALE' AND 'FEMALE' PODS CAN BE INSERTED INTO EITHER SHROUD FOR ADDITIONAL CONNECTOR POLARIZATION. WHEN MULTIPLE COMPODE SYSTEMS ARE USED IN A SINGLE APPLICATION, THE PODS MAY BE POSITIONED TO PROVIDE FOOLPROOF HARNESS TO HARNESS POLARIZATION.
 5. 'PIG TAIL' OR HARNESS PODS CAN BE INSERTED INTO RIGHT ANGLE HEADER SHROUDS WHERE NECESSARY.
 6. TO OBTAIN THE LOWEST POSSIBLE MATING FORCES OF A FULLY LOADED SHROUD, THE TERMINALS MUST BE ALLOWED TO FLOAT AS DESIGNED. ASSURE THAT THE TERMINALS ARE CRIMPED PROPERLY BY USING ONLY MOLEX TERMINALS AND PROPERLY MAINTAINED MOLEX AUTHORIZED APPLICATION TOOLING.
 7. FOR PROPER MATING OF SHROUDS, THE POD LOCKING FINGERS ON BOTH SHROUDS MUST BE ORIENTED SUCH THAT THEY ARE ON THE SAME PLANE. WHEN MATING THE CONNECTORS, THE SIDE LATCHES OF THE SHROUD ARE DESIGNED TO PROVIDE POLARIZATION.
 8. EACH SHROUD POD BAY IS KEYED TO PROVIDE POLARIZATION. THE POD MUST BE INSTALLED IN THE DIRECTION SHOWN. WHEN INSERTING A POD INTO THE SHROUD, THE 'U' SHAPED FEATURE ON THE SIDE OF THE POD MUST BE ORIENTED TO THE SAME FACE AS THE POD LOCKING FINGERS ON THE SHROUD.
 9. AS THE 'FACE TO FACE' MATING OF THE PODS IS CRITICAL TO ASSURE THAT ALL CONTACTS ARE FULLY 'WIPE'D', THE TOLERANCES OF THE SHROUD TO SHROUD MATING ARE TIGHTLY CONTROLLED. THEREFORE, WHEN SEATING A POD INTO A SHROUD, MAKE CERTAIN THAT THE SHROUD LOCKING FINGER IS FULLY SEATED INTO THE POD. IT MAY BE NECESSARY AT TIMES TO APPLY A SLIGHT VERTICAL FORCE TO THE LOCKING FINGER TO SEAT THE POD FULLY. ALSO, WHEN MATING TWO SHROUDS, ASSURE THAT THE SHROUD POSITIVE LOCKS, LOCATED ON THE SIDES OF THE SHROUD, ARE FULLY ENGAGED WITH THE MATING SHROUD.
 10. PODS MAY BE REMOVED FROM SHROUDS IF REQUIRED. TO REMOVE A POD, SIMPLY DEFLECT THE LOCKING FINGER AWAY FROM THE POD, USING A FINGER NAIL OR A SMALL STRAIGHT BLADE SCREWDRIVER, JUST FAR ENOUGH TO DISENGAGE THE POD. CAUTION: EXCESSIVE DEFLECTION MAY DAMAGE OR DESTROY THE LOCKING FINGER.
 11. THE SHROUD PROVIDES SYSTEM POLARIZATION. PODS MUST NEVER BE APPLIED WITHOUT THE USE OF A SHROUD.



PANEL THICKNESS: 1.57 (.062) TO 2.29 (.090)		QUALITY SYMBOLS		GENERAL TOLERANCES (UNLESS SPECIFIED)		DIMENSION STYLE		SCALE		DESIGN UNITS		THIRD ANGLE PROJECTION	
SEE SHT. 1		DRAWN: COMERC 1		mm		MM/IN		4:1		METRIC		PLUG SHROUD	
EC NO: UCP2005-2425		CHECKED: COMERC 1		INCH		DRAWN BY		DATE		DATE		MIXED LAYOUT	
2005/05/11		2005/05/13		4 PLACES ± .000 ± .000		COMERC 1		10/6/97		10/6/97		MOLEX INCORPORATED	
CHKD: COMERC 1		APPR: COMERC 1		3 PLACES ± .000 ± .000		CHECKED BY		DATE		DATE		SD-43839-001	
2005/05/16		2005/05/16		2 PLACES ± .000 ± .000		COMERC 1		10/6/97		10/10/97		2 OF 2	
APPR: COMERC 1		2005/05/16		1 PLACE ± .000 ± .000		APPROVED BY		DATE		DATE			
DESCRIPTION		ANGULAR ±1/2°		FRY		MATERIAL NO.		DOCUMENT NO.		SD-43839-001			
REV		DRAFT WHERE APPLICABLE		SEE CHART		SIZE		THIS DRAWING CONTAINS INFORMATION THAT IS PROPRIETARY TO MOLEX		INCORPORATED AND SHOULD NOT BE USED WITHOUT WRITTEN PERMISSION			
B1		MUST REMAIN WITHIN DIMENSIONS											