



Chipsmall Limited consists of a professional team with an average of over 10 year of expertise in the distribution of electronic components. Based in Hongkong, we have already established firm and mutual-benefit business relationships with customers from,Europe,America and south Asia,supplying obsolete and hard-to-find components to meet their specific needs.

With the principle of "Quality Parts,Customers Priority,Honest Operation,and Considerate Service",our business mainly focus on the distribution of electronic components. Line cards we deal with include Microchip,ALPS,ROHM,Xilinx,Pulse,ON,Everlight and Freescale. Main products comprise IC,Modules,Potentiometer,IC Socket,Relay,Connector.Our parts cover such applications as commercial,industrial, and automotives areas.

We are looking forward to setting up business relationship with you and hope to provide you with the best service and solution. Let us make a better world for our industry!



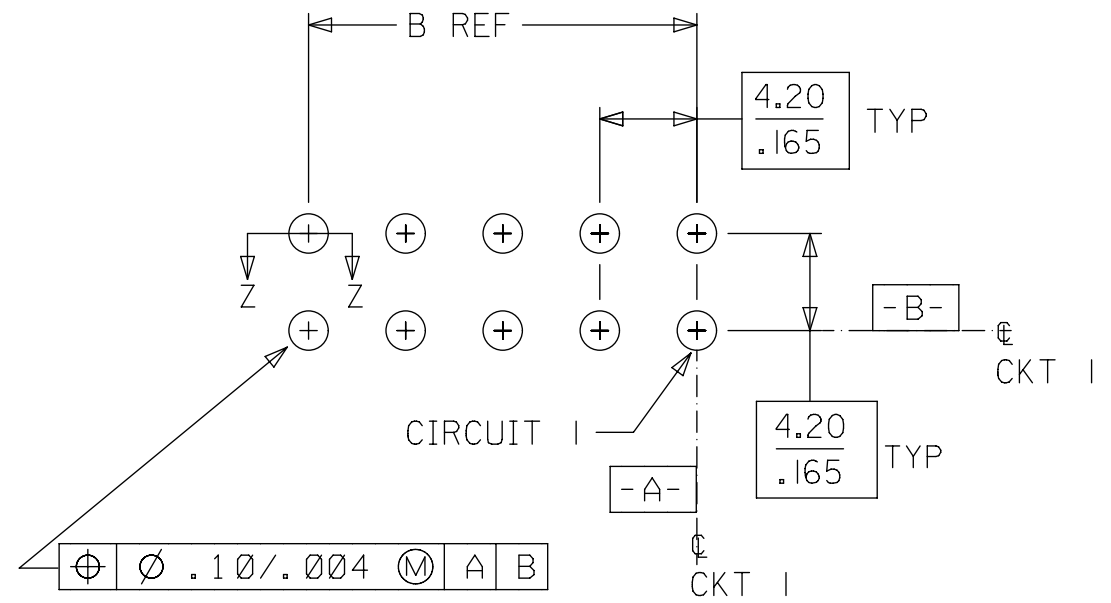
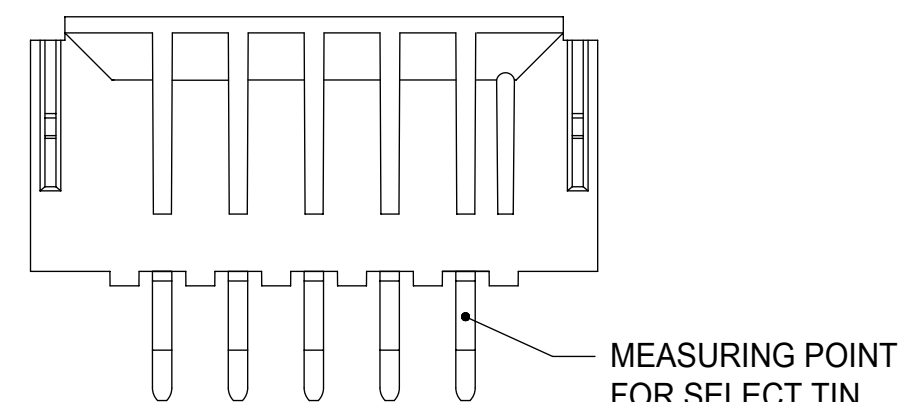
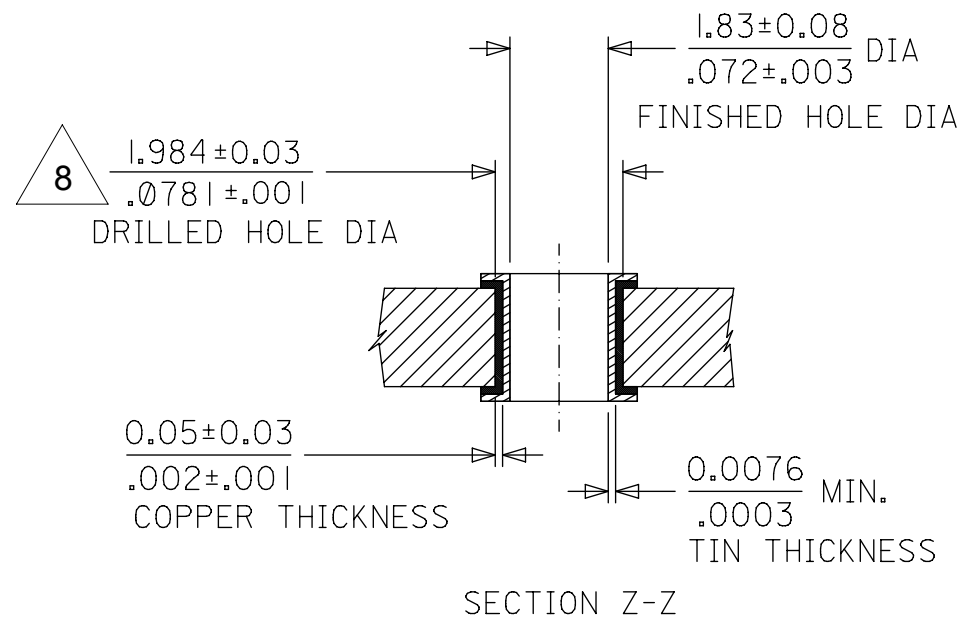
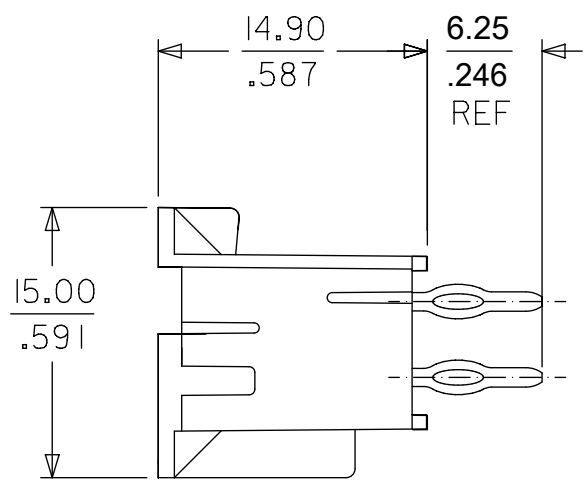
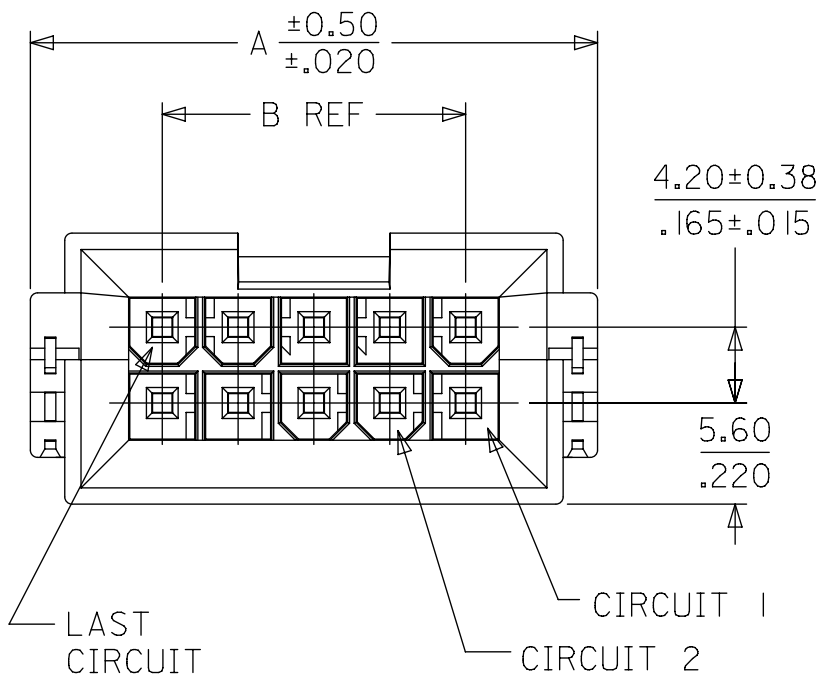
## Contact us

Tel: +86-755-8981 8866 Fax: +86-755-8427 6832

Email & Skype: info@chipsmall.com Web: www.chipsmall.com

Address: A1208, Overseas Decoration Building, #122 Zhenhua RD., Futian, Shenzhen, China





PCB LAYOUT: COMPONENT SIDE  
RECOMMENDED MINIMUM PCB THICKNESS:  $\frac{2.24}{.088}$

CKT	A	B
4	$\frac{18.81}{.740}$	$\frac{4.20}{.165}$
6	$\frac{23.01}{.906}$	$\frac{8.40}{.331}$
8	$\frac{27.21}{1.071}$	$\frac{12.60}{.496}$
10	$\frac{31.41}{1.237}$	$\frac{16.80}{.661}$
12	$\frac{35.61}{1.402}$	$\frac{21.00}{.827}$
14	$\frac{39.81}{1.567}$	$\frac{25.20}{.992}$
16	$\frac{44.01}{1.733}$	$\frac{29.40}{1.157}$
18	$\frac{48.21}{1.898}$	$\frac{33.60}{1.323}$
20	$\frac{52.41}{2.063}$	$\frac{37.80}{1.488}$
22	$\frac{56.61}{2.229}$	$\frac{42.00}{1.654}$
24	$\frac{60.81}{2.394}$	$\frac{46.20}{1.819}$

- NOTES:
- MATERIAL:  
HOUSING: NYLON, GLASS FILLED, UL94V-0, COLOR: BLACK  
TERMINAL: PHOSPHOR BRONZE
  - FINISH: SEE SHEET 2
  - PRODUCT SPECIFICATION: PS-43879-001
  - PACKAGING: PK-43879-001
  - THIS PART MATES WITH RECEPTACLE NUMBERS 5557, 42474, 44516 AND HEADER NUMBER 42385
  - PART IS NOT DESIGNED FOR CURRENT SHARING
  - PART ALLOWS FOR 1.27/.050 MAX. MIS-ALIGNMENT WITH MATING HOUSING IN ANY DIRECTION
  - DRILLED HOLE DIAMETER IS EQUIVALENT TO 5/64 INCH STANDARD DRILL BIT
  - CONNECTOR ASSEMBLIES ARE NOT DESIGNED TO BE MATED AND UNMATED WHILE CIRCUITS ARE LIVE
  - PART CONFORMS TO CLASS "B" REQUIREMENTS OF COSMETIC SPECIFICATION PS-45499-002
  - THIS HEADER REQUIRES A MOLEX INSERTION TOOL (62200-9400) TO PROPERLY INSTALL IT TO THE PCB.

<b>QUALITY SYMBOLS</b> 	THIS DRAWING CONTAINS INFORMATION THAT IS PROPRIETARY TO MOLEX ELECTRONIC TECHNOLOGIES, LLC AND SHOULD NOT BE USED WITHOUT WRITTEN PERMISSION				
	EC NO: 104170 DRWN: C-SLAFTER CHKD: JBELL APPR: FSMITH REV: L4	GENERAL TOLERANCES (UNLESS SPECIFIED)		DIMENSION UNITS: MM/IN	SCALE: 2:1
		4 PLACES ±	3 PLACES ± ± 0.01	DRWN BY: MANLAPAZ	DATE: 1998/04/08
		2 PLACES ± 0.25 ± 0.014	1 PLACES ± 0.35 ±	CHK'D BY: BANDURA	DATE: 1998/04/08
0 PLACES ±	ANGULAR TOL ± 0.5	APPR BY: FSMITH	DATE: 2012/12/03		
DRAFT WHERE APPLICABLE MUST REMAIN WITHIN DIMENSIONS	DRAWING SIZE: B	THIRD ANGLE PROJECTION			

MINI-FIT JR  
BMI/CPI HEADER ASSEMBLY

PRODUCT CUSTOMER DRAWING

SERIES: 43879	MATERIAL NUMBER: SEE CHART	CUSTOMER: GENERAL MARKET
DOCUMENT NUMBER: SD-43879-021	DOC TYPE: PSD	DOC PART: 000
SHEET NUMBER: 1 OF 2		

FINISH: 1 TIN OVER NICKEL	
CKTS	MATERIAL NO.
04	43879-0022
06	43879-0023
08	NOT TOOLED
10	43879-0025
12	NOT TOOLED
14	43879-0027
16	NOT TOOLED
18	43879-0029
20	NOT TOOLED
22	NOT TOOLED
24	43879-0032

FINISH: 4 GOLD & TIN OVER NICKEL	
CKTS	MATERIAL NO.
04	<b>43879-0055</b>
06	<b>43879-0056</b>
08	NOT TOOLED
10	<b>43879-0058</b>
12	NOT TOOLED
14	<b>43879-0060</b>
16	NOT TOOLED
18	<b>43879-0062</b>
20	NOT TOOLED
22	NOT TOOLED
24	<b>43879-0065</b>

FINISH:  
 1 - 0.00254/.000100 MIN. BRIGHT TIN OVER 0.00127/.000050 MIN. NICKEL OVERALL.  
 4 - 0.00076/.000030 MIN. GOLD IN CONTACT AREA, 0.00254/.000100 MIN. MATTE TIN IN TAIL AREA, OVER 0.00127/.000050 MIN. NICKEL OVERALL.

<b>QUALITY SYMBOLS</b> 	THIS DRAWING CONTAINS INFORMATION THAT IS PROPRIETARY TO MOLEX ELECTRONIC TECHNOLOGIES, LLC AND SHOULD NOT BE USED WITHOUT WRITTEN PERMISSION										
	CHG DIM 5.82 TO 6.25 EC NO: 104170 DRWN: C-SLAFTER CHKD: JBELL APPR: FSMITH	GENERAL TOLERANCES (UNLESS SPECIFIED)		DIMENSION UNITS		SCALE		  MINI-FIT JR BMI/CPI HEADER ASSEMBLY  PRODUCT CUSTOMER DRAWING			
				MM/IN		2:1					
				MM INCH		DRWN BY DATE					
		4 PLACES ± ±		MANLAPAZ		1998/04/08					
		3 PLACES ± ± 0.01		CHK'D BY DATE		BANDURA 1998/04/08					
	2 PLACES ± 0.25 ± 0.014		APPR BY DATE		FSMITH 2012/12/03						
	1 PLACES ± 0.35 ±		DRAWING SIZE		THIRD ANGLE PROJECTION		SERIES MATERIAL NUMBER CUSTOMER		43879 SEE CHART GENERAL MARKET		
	0 PLACES ± ±		ANGULAR TOL ± 0.5		B		DOCUMENT NUMBER		SD-43879-021		
	DRAFT WHERE APPLICABLE MUST REMAIN WITHIN DIMENSIONS						DOC TYPE		PSD		
						DOC PART		000			
						SHEET NUMBER		2 OF 2			