



Chipsmall Limited consists of a professional team with an average of over 10 year of expertise in the distribution of electronic components. Based in Hongkong, we have already established firm and mutual-benefit business relationships with customers from,Europe,America and south Asia,supplying obsolete and hard-to-find components to meet their specific needs.

With the principle of "Quality Parts,Customers Priority,Honest Operation,and Considerate Service",our business mainly focus on the distribution of electronic components. Line cards we deal with include Microchip,ALPS,ROHM,Xilinx,Pulse,ON,Everlight and Freescale. Main products comprise IC,Modules,Potentiometer,IC Socket,Relay,Connector.Our parts cover such applications as commercial,industrial, and automotives areas.

We are looking forward to setting up business relationship with you and hope to provide you with the best service and solution. Let us make a better world for our industry!



Contact us

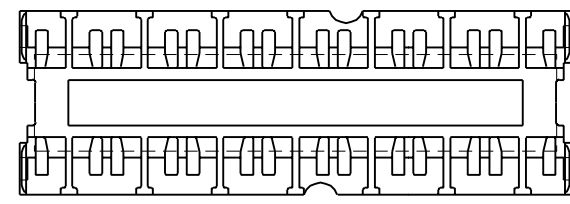
Tel: +86-755-8981 8866 Fax: +86-755-8427 6832

Email & Skype: info@chipsmall.com Web: www.chipsmall.com

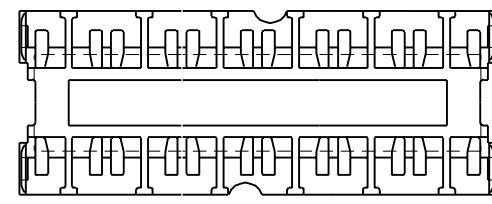
Address: A1208, Overseas Decoration Building, #122 Zhenhua RD., Futian, Shenzhen, China



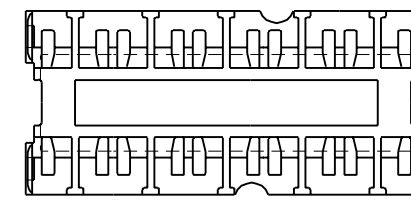
MATERIAL NUMBER	CIRCUITS	DIM. "A"
43980-1001	6	31.30/(1.232)
43980-1002	8	41.30/(1.626)
43980-1003	10	51.30/(2.020)
43980-1004	12	61.30/(2.413)
43980-1005	14	71.30/(2.807)



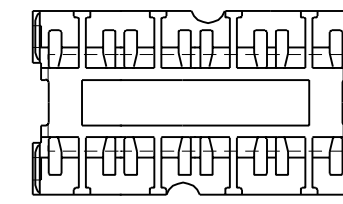
14 CIRCUIT



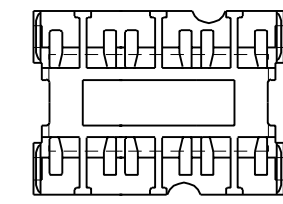
12 CIRCUIT



10 CIRCUIT

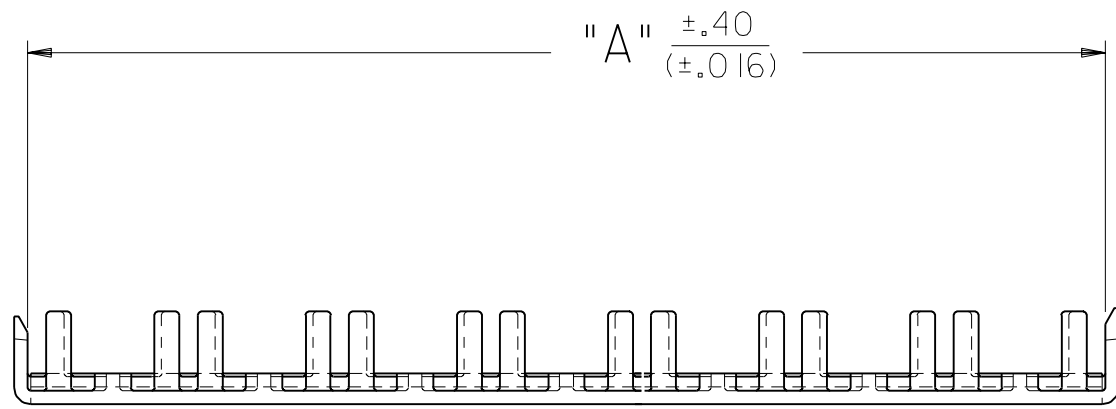


8 CIRCUIT



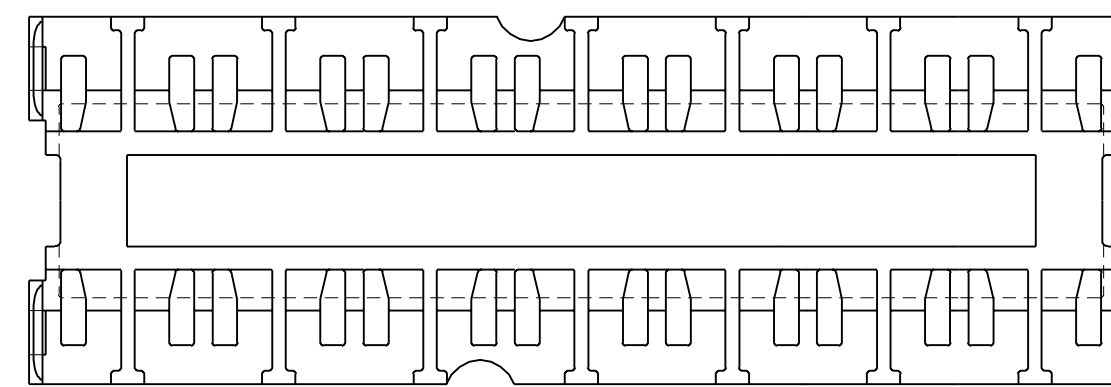
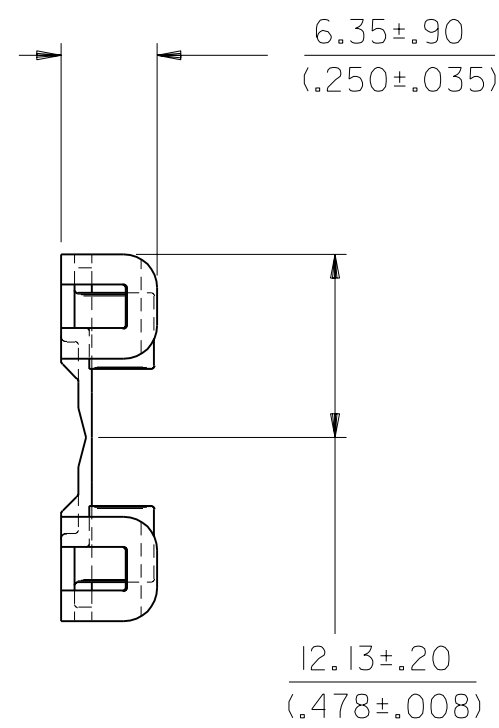
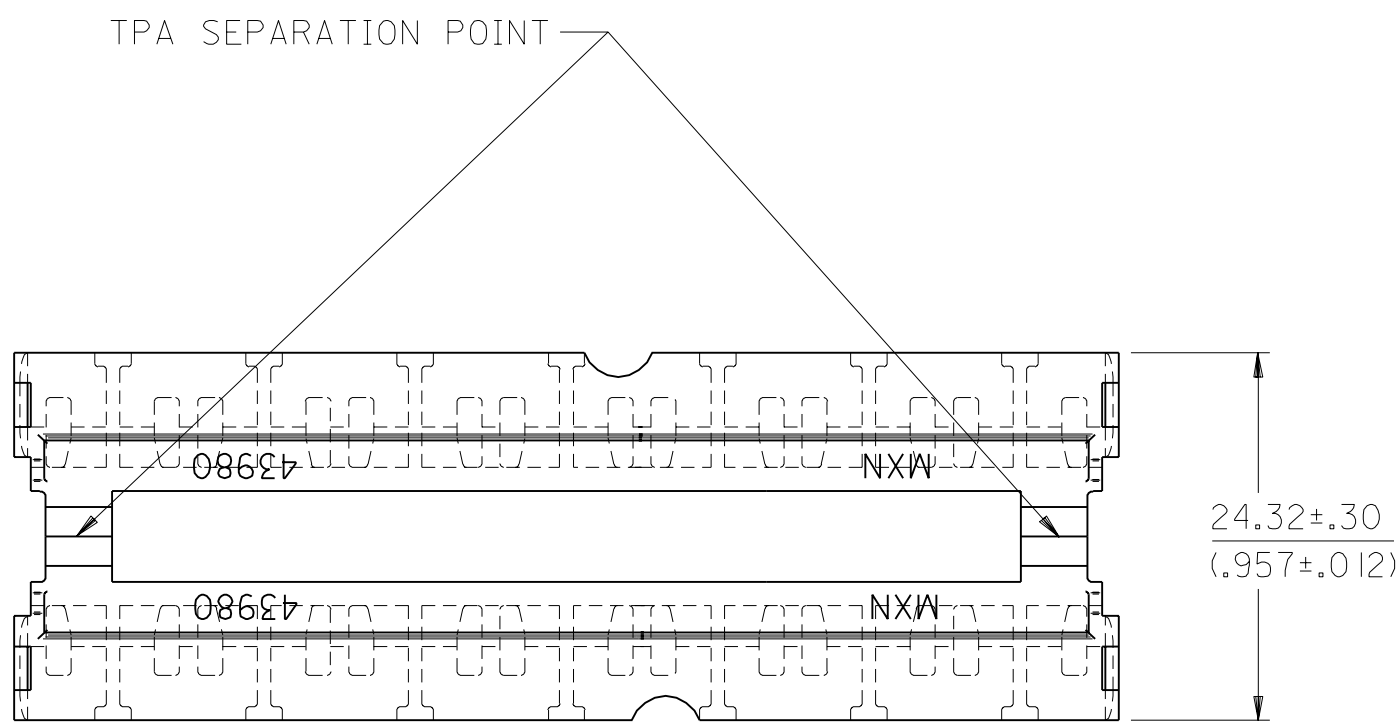
6 CIRCUIT

CIRCUIT SIZES
SCALE: 1=1



NOTES:

1. MATERIAL: POLYESTER, U.L. 94V-0. COLOR: NATURAL (WHITE)
2. PRODUCT SPEC.: NONE
3. USED ON 43914 RECEPTACLE HOUSING AND 43938 PLUG HOUSING.



ADDED TOLERANCES EC NO. UCR 1999-0808 DRWN: COMERC 99/05/27 CHK: COMERC 99/05/27 APPR: COMERC 99/05/27	DESCRIPTION BI	QUALITY SYMBOLS MAJOR = 0 CRITICAL C = 0	GENERAL TOLERANCES: (UNLESS SPECIFIED)		SCALE 2:1	DESIGN UNITS <input checked="" type="checkbox"/> mm <input type="checkbox"/> INCH	THIRD ANGLE PROJECTION <input checked="" type="checkbox"/> mm <input type="checkbox"/> INCH <input type="checkbox"/> mm ONLY	SHT	REV			
			4 PLACES	±0.---	±.---	DRAWN BY & DATE COMERC 97/08/21	TITLE: TWIN TPA'S DUAL ROW 6-14 CIRCUIT (MINI-FIT SR.)		MOLEX INCORPORATED	MATERIAL NO.	DRAWING NO. SD-43980-002	SHEET NO. 1 OF 1
			3 PLACES	±0.---	±.---	CHECKED BY & DATE COMERC 97/08/25						
			2 PLACES	±0.---	±.---	APPROVED BY & DATE FRY 97/08/26	CAD FILENAME S4398002.DGN		THIS DRAWING CONTAINS INFORMATION THAT IS PROPRIETARY TO MOLEX INCORPORATED AND SHOULD NOT BE USED WITHOUT WRITTEN PERMISSION.		SIZE C	