



Chipsmall Limited consists of a professional team with an average of over 10 year of expertise in the distribution of electronic components. Based in Hongkong, we have already established firm and mutual-benefit business relationships with customers from,Europe,America and south Asia,supplying obsolete and hard-to-find components to meet their specific needs.

With the principle of “Quality Parts,Customers Priority,Honest Operation,and Considerate Service”,our business mainly focus on the distribution of electronic components. Line cards we deal with include Microchip,ALPS,ROHM,Xilinx,Pulse,ON,Everlight and Freescale. Main products comprise IC,Modules,Potentiometer,IC Socket,Relay,Connector.Our parts cover such applications as commercial,industrial, and automotives areas.

We are looking forward to setting up business relationship with you and hope to provide you with the best service and solution. Let us make a better world for our industry!



Contact us

Tel: +86-755-8981 8866 Fax: +86-755-8427 6832

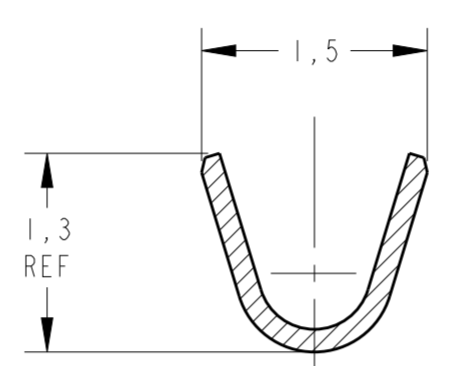
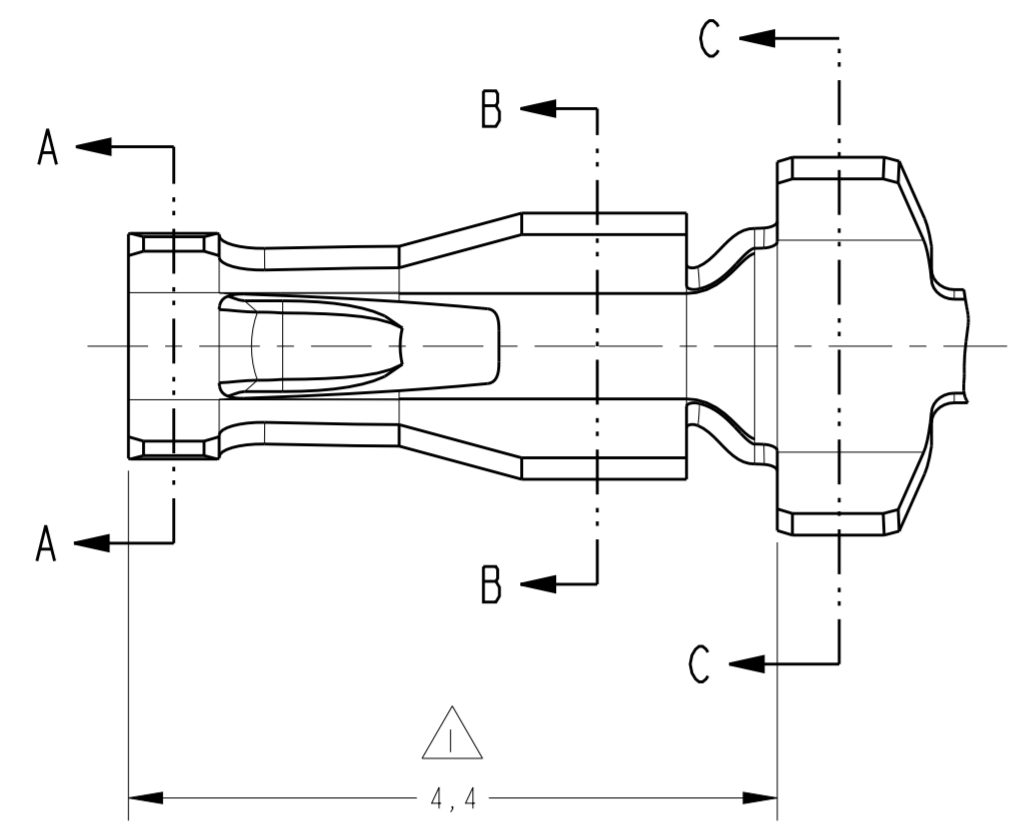
Email & Skype: info@chipsmall.com Web: www.chipsmall.com

Address: A1208, Overseas Decoration Building, #122 Zhenhua RD., Futian, Shenzhen, China

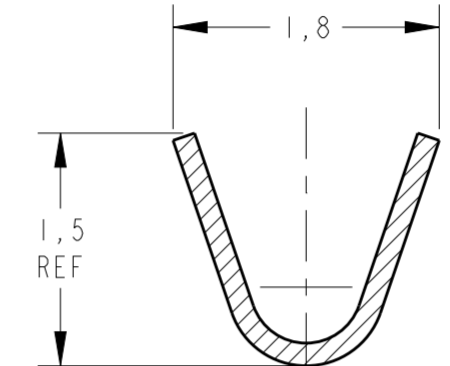


THIS DRAWING IS UNPUBLISHED. RELEASED FOR PUBLICATION 20
 © COPYRIGHT 20 BY - ALL RIGHTS RESERVED.

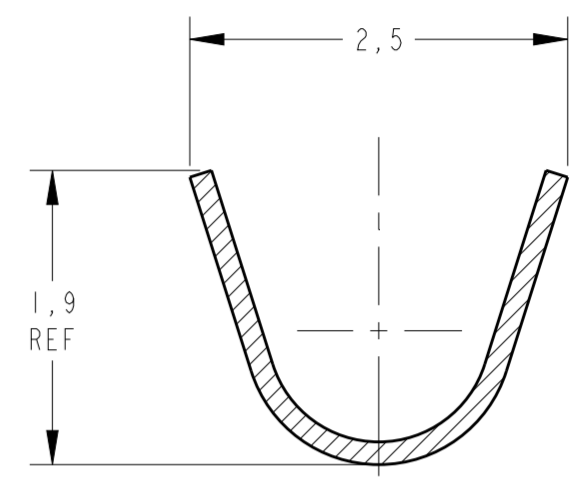
LOC	DIST	REVISIONS					
AP	-	P	LTR	DESCRIPTION	DATE	DWN	APVD
		D2		REDRAW BY CAD ECO-12-018411	19OCT2012	NCL	WAO
		D3		REV. BY ECO 13-011931	25JUL2013	HC	WLS



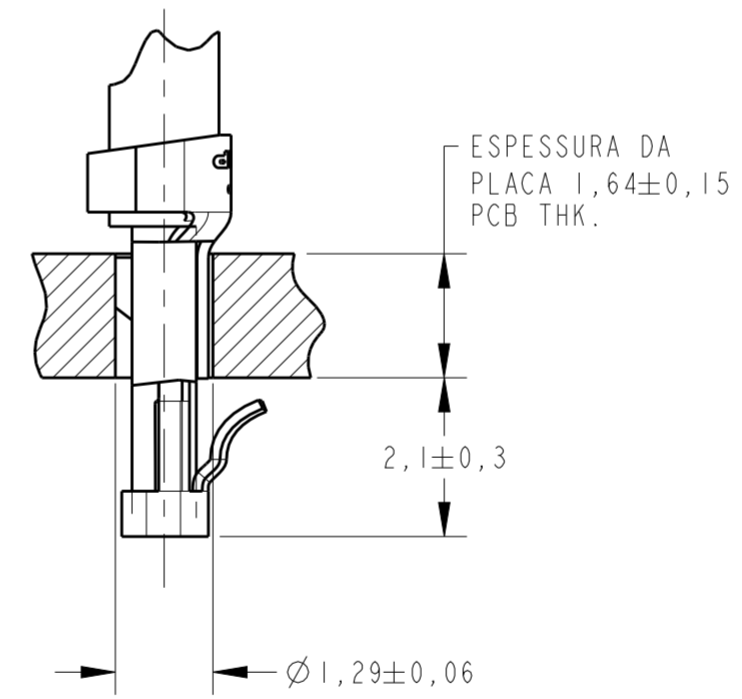
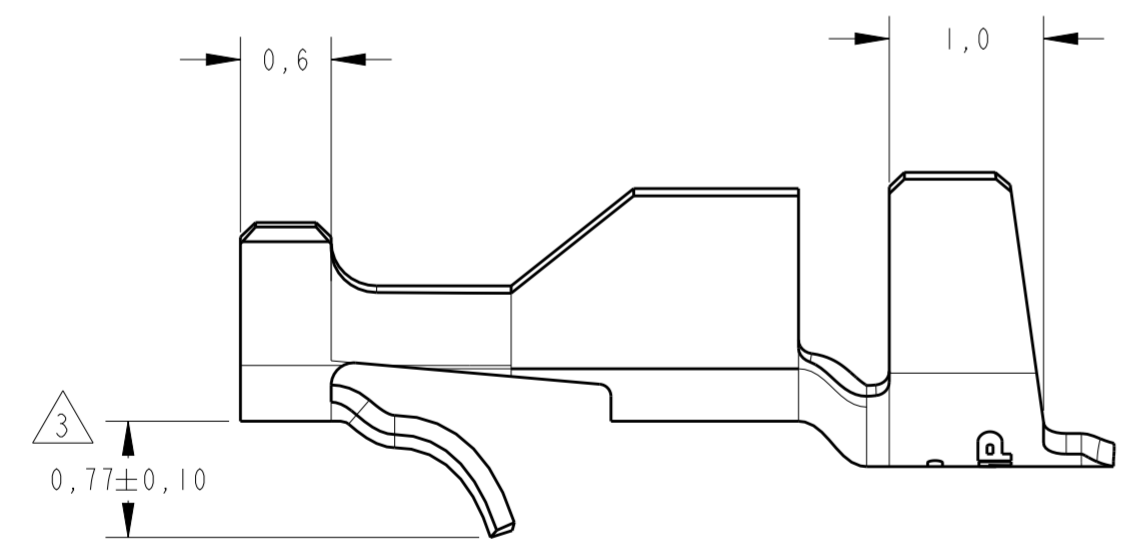
SECTION A-A
SCALE 20:1



SECTION B-B
SCALE 20:1

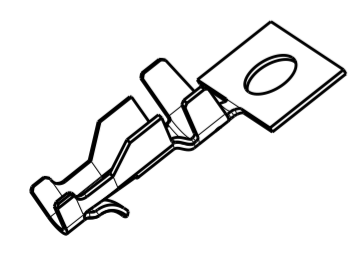


SECTION C-C
SCALE 20:1



SECTION X-X
SCALE 10:1

- 1 - SOLDABILIDADE DE ACORDO COM ESPEC. TE 109-11-5
- SOLDERABLE PER TE SPEC. 109-11-5
- 2 - O TERMINAL DEVE RESISTIR A UMA FORÇA DE ARRANCAMENTO DO CONDUTOR DE 8,9N MIN.
- THE CRIMP TENSILE OF WIRE MUST WITHSTAND 8,9N MIN.
- 3 - ALTURA DA TAVA APÓS APLICAÇÃO: 0,60-0,95.
- LOCKING LANCE HEIGHT AFTER CRIMPING: 0,60-0,95.



PERSPECTIVE VIEW
SCALE 5:1

Ø 1,35mm MAX	24 AWG	EBLF-18B939-FA	PRÉ ESTANHADO S/NICKEL	LATÃO / BRASS	444082 -2
Ø 1,35mm MAX	24 AWG			LATÃO / BRASS	444082 -1
INS. RANGE	WIRE RANGE	PART NUMBER FORD	FINISH	MATERIAL	PART NUMBER

THIS DRAWING IS A CONTROLLED DOCUMENT.		DWN NCLAPRESA 19OCT2012	TE Connectivity		
DIMENSIONS: mm		CHK JRGOLDSCHMIDT 19OCT2012			
TOLERANCES UNLESS OTHERWISE SPECIFIED:		APVD DAOLIVEIRA 19OCT2012			
0 PLC ±	1 PLC ±	PRODUCT SPEC	NAME CONTACT-SHORT VERSION 11 - MINI AMP-IN		
2 PLC ±0,3	3 PLC ±	APPLICATION SPEC	SIZE A2	CAGE CODE 00779	DRAWING NO C-444082
4 PLC ±	ANGLES ±1°	WEIGHT -	RESTRICTED TO -		
MATERIAL -	FINISH -	CUSTOMER DRAWING	SCALE 20:1	SHEET 1 OF 1	REV D3