



Chipsmall Limited consists of a professional team with an average of over 10 year of expertise in the distribution of electronic components. Based in Hongkong, we have already established firm and mutual-benefit business relationships with customers from,Europe,America and south Asia,supplying obsolete and hard-to-find components to meet their specific needs.

With the principle of “Quality Parts,Customers Priority,Honest Operation,and Considerate Service”,our business mainly focus on the distribution of electronic components. Line cards we deal with include Microchip,ALPS,ROHM,Xilinx,Pulse,ON,Everlight and Freescale. Main products comprise IC,Modules,Potentiometer,IC Socket,Relay,Connector.Our parts cover such applications as commercial,industrial, and automotives areas.

We are looking forward to setting up business relationship with you and hope to provide you with the best service and solution. Let us make a better world for our industry!



Contact us

Tel: +86-755-8981 8866 Fax: +86-755-8427 6832

Email & Skype: info@chipsmall.com Web: www.chipsmall.com

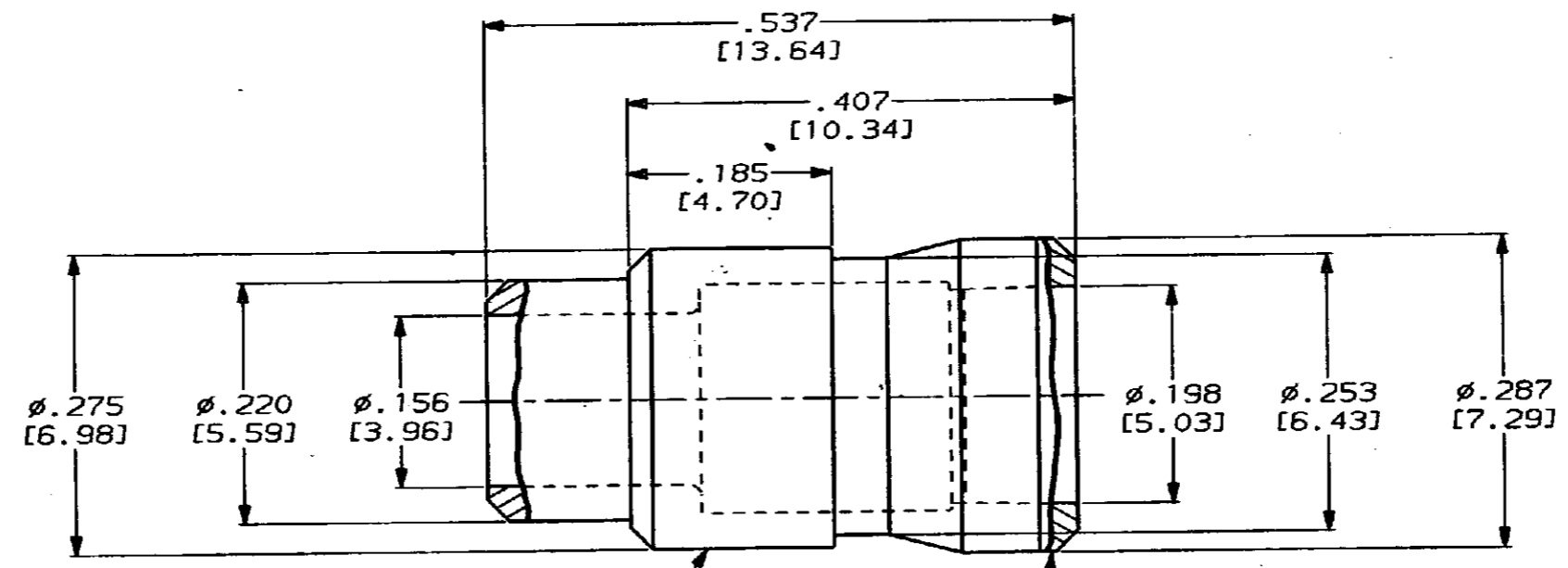
Address: A1208, Overseas Decoration Building, #122 Zhenhua RD., Futian, Shenzhen, China



DRAWING MADE IN THIRD ANGLE PROJECTION

THIS DRAWING IS UNPUBLISHED. RELEASED FOR PUBLICATION .19
 © COPYRIGHT 19 BY AMP INCORPORATED. ALL INTERNATIONAL RIGHTS RESERVED.

PROD CODE	LOC	DIST	REVISIONS	DATE	APPD
4971	DF	A0	0 RELEASED PER NPR 89-0317 TW	8-8-89	500-89



REDUCER BODY
 MATL: LEADED COPPER
 FINISH: .000015 MIN GOLD
 PER MIL-G-45204 OVER .000040
 MIN NICKEL PER QQ-N-290

END CAP
 MATL: POLYPROPYLENE

1. DIMENSIONS IN BRACKETS ARE IN MILLIMETERS. METRIC EQUIVALENTS ARE BASED UPON 1.00 INCH = 25.4 mm.

		446743-1	
		PART NO	
DO NOT SCALE PRINT. UNLESS SPECIFIED DIMENSIONS IN INCHES (mm) TOLERANCES ON: 2 PLC DEC ± .0005 (0.13) 3 PLC DEC ± .0005 (0.13) ANGLES ±		AMP INCORPORATED Harrisburg, Pa. 17105	
MATERIAL SEE CALLOUTS		NAME PIN CAVITY REDUCER, ARINC 600, SIZE 5 TO SIZE 12	
FINISH SEE CALLOUTS		SIZE B	FSCM NO 00779
		SCALE 8:1	DRAWING NO 446743
			SHEET 1 OF 1

CUSTOMER DRAWING