



Chipsmall Limited consists of a professional team with an average of over 10 year of expertise in the distribution of electronic components. Based in Hongkong, we have already established firm and mutual-benefit business relationships with customers from,Europe,America and south Asia,supplying obsolete and hard-to-find components to meet their specific needs.

With the principle of “Quality Parts,Customers Priority,Honest Operation,and Considerate Service”,our business mainly focus on the distribution of electronic components. Line cards we deal with include Microchip,ALPS,ROHM,Xilinx,Pulse,ON,Everlight and Freescale. Main products comprise IC,Modules,Potentiometer,IC Socket,Relay,Connector.Our parts cover such applications as commercial,industrial, and automotives areas.

We are looking forward to setting up business relationship with you and hope to provide you with the best service and solution. Let us make a better world for our industry!



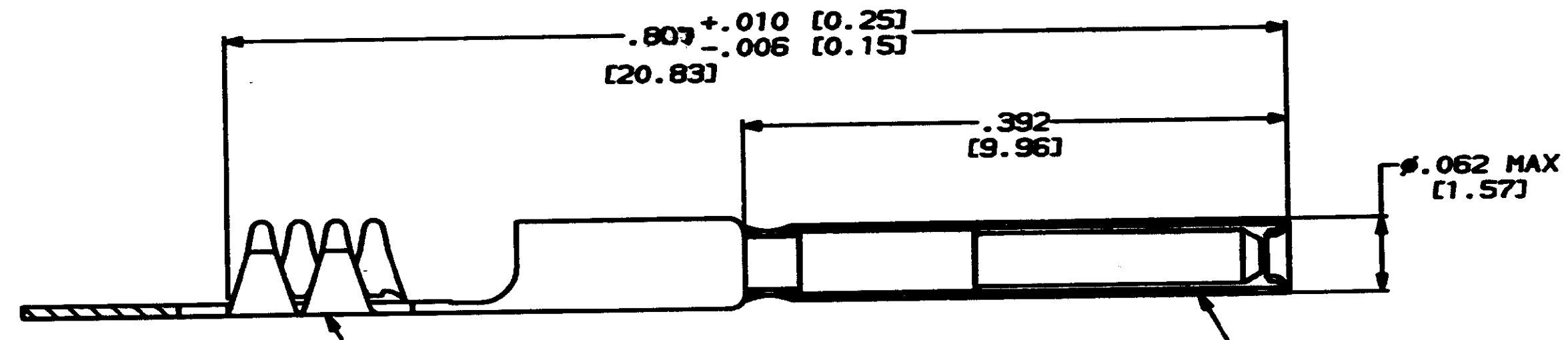
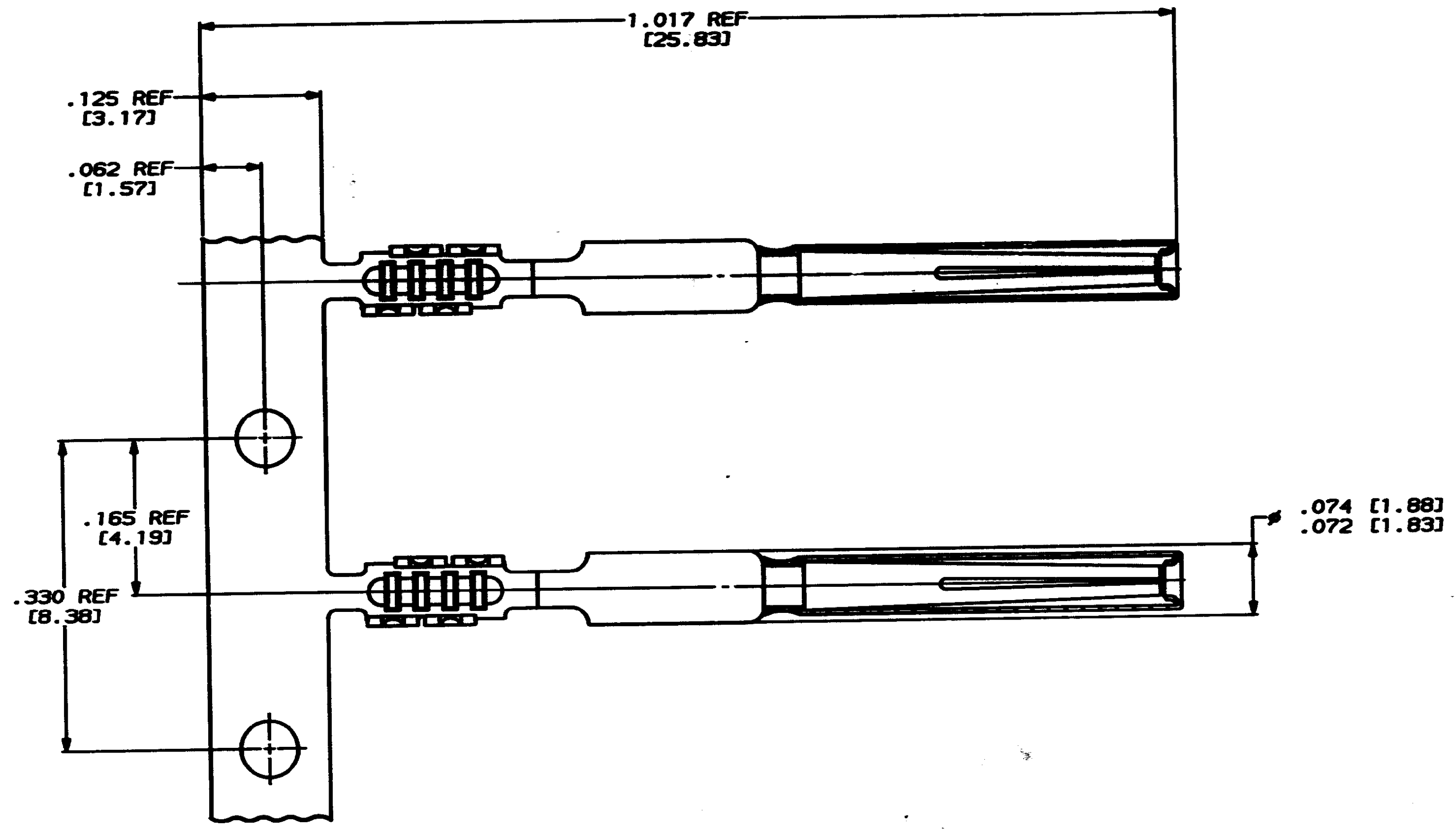
## Contact us

Tel: +86-755-8981 8866 Fax: +86-755-8427 6832

Email & Skype: info@chipsmall.com Web: www.chipsmall.com

Address: A1208, Overseas Decoration Building, #122 Zhenhua RD., Futian, Shenzhen, China





CONTACT MATERIAL: COPPER ALLOY PER QQ-B-750 FINISH: SELECTIVELY PLATED GOLD .000030 MIN THICK ON MATING END WITH REMAINDER OF CONTACT GOLD FLASHED .000005 MIN THICK WITH ENTIRE CONTACT NICKEL UNDERPLATED .000030 MIN THICK

CONTACT SLEEVE MATERIAL: STAINLESS STEEL PER ASTM-A-582 FINISH: PASSIVATED PER QQ-P-35

447548-1  
PART NO

DO NOT SCALE PRINT. UNLESS SPECIFIED DIMENSIONS IN INCHES (mm) TOLERANCES ON: 2 PLC DEC ± .005 3 PLC DEC ± .005 OR .010 ANGLES ± .005	DR 4-12-81 T. SUREY	AMP AMP Incorporated Harrisburg, PA 17105-3608	NAME		
	CHK <i>Edward J. Howard 4-12-81</i>		SOCKET CONTACT ASSEMBLY, ARINC404, SIZE 22, FFC		
SEE CALLOUTS	APPRO <i>Edward J. Howard 4-12-81</i>	PRODUCT SPEC	SIZE	CAGE CODE	DRAWING NO
FINISH	APPLICATION SPEC	WEIGHT	D	00779	447548
SEE CALLOUTS			SCALE 10:1		SHEET 1 OF 1