



Chipsmall Limited consists of a professional team with an average of over 10 year of expertise in the distribution of electronic components. Based in Hongkong, we have already established firm and mutual-benefit business relationships with customers from,Europe,America and south Asia,supplying obsolete and hard-to-find components to meet their specific needs.

With the principle of "Quality Parts,Customers Priority,Honest Operation,and Considerate Service",our business mainly focus on the distribution of electronic components. Line cards we deal with include Microchip,ALPS,ROHM,Xilinx,Pulse,ON,Everlight and Freescale. Main products comprise IC,Modules,Potentiometer,IC Socket,Relay,Connector.Our parts cover such applications as commercial,industrial, and automotives areas.

We are looking forward to setting up business relationship with you and hope to provide you with the best service and solution. Let us make a better world for our industry!



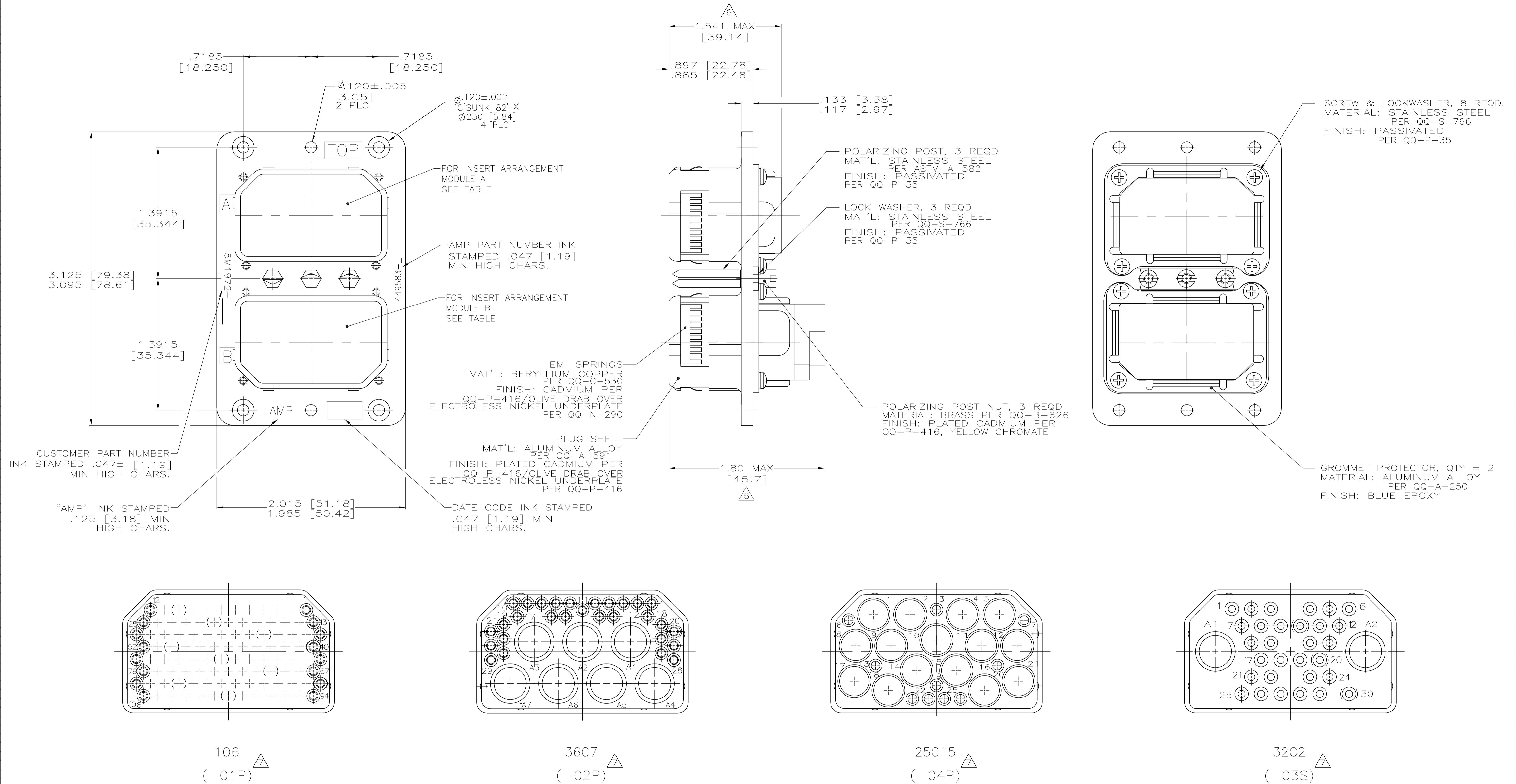
## Contact us

Tel: +86-755-8981 8866 Fax: +86-755-8427 6832

Email & Skype: info@chipsmall.com Web: www.chipsmall.com

Address: A1208, Overseas Decoration Building, #122 Zhenhua RD., Futian, Shenzhen, China





- KEYS INSTALLED IN POSITIONS AS SHOWN IN TABLE.
  - CONTACTS ARE INCLUDED IN A CONTAINER WITHIN THE CONNECTOR PACKAGE FOR SHIPMENT.
  - ALL DIMENSIONS CONFORM TO MIL-C-81659 WITH EXCEPTION TO EMI SPRING FINGERS.
  - COAX/TRIAX CONTACTS TO BE PURCHASED SEPARATELY.
  - CONFORMS TO REQUIREMENTS OF MCDONNELL DOUGLAS 5M1972.
- △ CONNECTOR VIEW AND INSERT LAYOUT IS SHOWN FOR 449583-1.  
 △ MATING FACE SHOWN FOR REFERENCE ONLY.

| PART NUMBER | CUSTOMER PART NUMBER | POLARIZING POSITION | MOD A | MOD B |
|-------------|----------------------|---------------------|-------|-------|
| 449583-1    | 5M1972-01P02P        | 04                  | 106P  | 36C7P |
| 449583-2    | 5M1972-01P01P        | 04                  | 106P  | 106P  |
| 449583-3    | 5M1972-01P03S        | 02                  | 106P  | 32C2  |
| 449583-4    | 5M1972-04P01P        | 45                  | 25C15 | 106P  |
| 449583-5    | 5M1972-02P01P        | 01                  | 36C7P | 106P  |
| 449583-6    | 5M1972-02P01PA       | 01                  | 36C7P | 106P  |

**OBSELETE**

|  |  |                          |   |
|--|--|--------------------------|---|
| THIS DRAWING IS A CONTROLLED DOCUMENT. |  | DIN T. ALEXANDER 4-17-96 | <b>STE</b> TE Connectivity                                |
| DIMENSIONS: INCHES                     |  | CHK K. GUARAGNO 4-22-96  |   |
| TOLERANCES UNLESS OTHERWISE SPECIFIED: |  | APVD K. GUARAGNO 4-22-96 | NAME  |
| 0 PLC ± -                              |  | PRODUCT SPEC             | ARINC 404 KIT, MME2P106P36C7P-0004 (204) WITH EMI FINGERS |
| 1 PLC ± -                              |  | APPLICATION SPEC         | SIZE  |
| 2 PLC ± -                              |  | WEIGHT                   | CAGE CODE   |
| 3 PLC ± .010 [0.25]                    |  | CUSTOMER DRAWING         | DRAWING NO  |
| 4 PLC ± .0050                          |  | SCALE 2:1                | RESTRICTED TO   |
| ANGLES ± -                             |  | SHEET 1 OF 1             | REV E   |