



Chipsmall Limited consists of a professional team with an average of over 10 year of expertise in the distribution of electronic components. Based in Hongkong, we have already established firm and mutual-benefit business relationships with customers from,Europe,America and south Asia,supplying obsolete and hard-to-find components to meet their specific needs.

With the principle of “Quality Parts,Customers Priority,Honest Operation,and Considerate Service”,our business mainly focus on the distribution of electronic components. Line cards we deal with include Microchip,ALPS,ROHM,Xilinx,Pulse,ON,Everlight and Freescale. Main products comprise IC,Modules,Potentiometer,IC Socket,Relay,Connector.Our parts cover such applications as commercial,industrial, and automotives areas.

We are looking forward to setting up business relationship with you and hope to provide you with the best service and solution. Let us make a better world for our industry!



Contact us

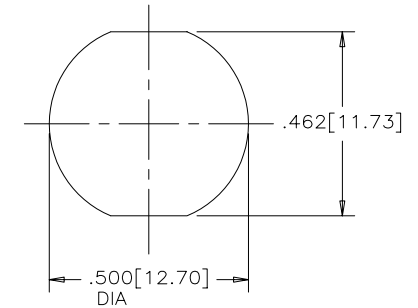
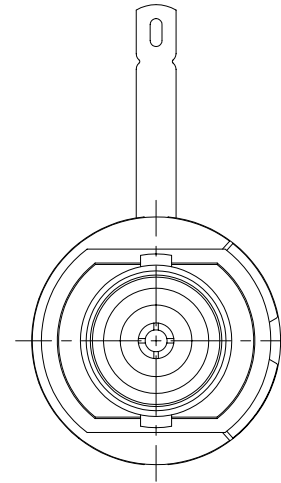
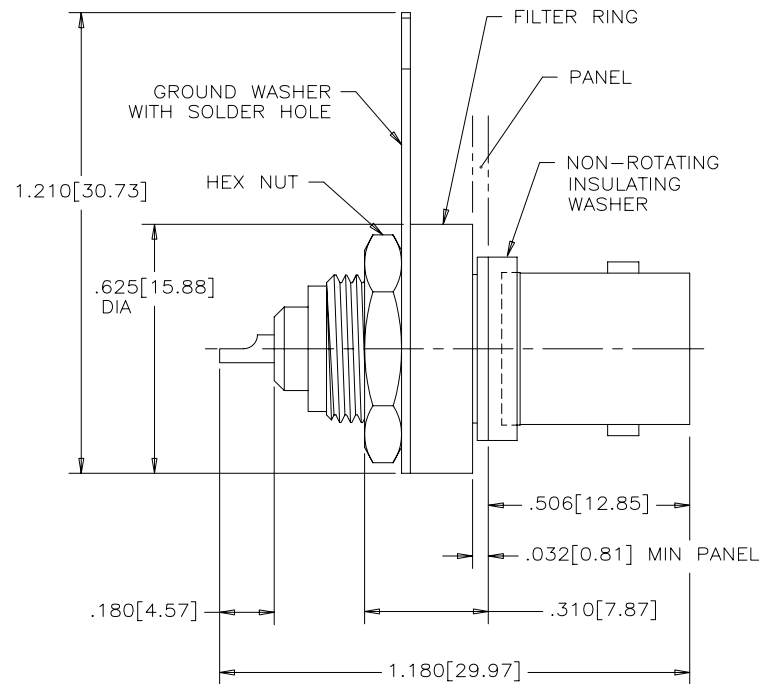
Tel: +86-755-8981 8866 Fax: +86-755-8427 6832

Email & Skype: info@chipsmall.com Web: www.chipsmall.com

Address: A1208, Overseas Decoration Building, #122 Zhenhua RD., Futian, Shenzhen, China



REVISIONS			
REV	ECN, ERN NO.	DATE	APPRD.
A	PRODUCT DRAWING (EAR 13136)	JUN18/07	K.L.



RECOMMENDED PANEL CUT-OUT

MECHANICAL SPECIFICATIONS:

ALL MATERIALS ARE RoHS COMPLIANT PER EU DIRECTIVE 2002/95/EC AND AMENDMENTS

CENTRE INSERT: TEFLON

METAL BODY: NICKEL PLATED BRASS

CONTACT: PHOSPHOR BRONZE, SILVER PLATED

GROUND DEVICE: NICKEL PLATED PHOSPHOR BRONZE

FILTER RING HOUSING: THERMOPLASTIC

INSULATING WASHER: THERMOPLASTIC

NOTE: CONNECTOR PACKAGING CONSISTS OF ONE OF EACH OF CONNECTOR, INSULATING WASHER, FILTER RING, GROUND WASHER AND HEX NUT.

ELECTRICAL SPECIFICATIONS:

CAPACITANCE: 10,000 pF $\pm 20\%$

DIELECTRIC WITHSTANDING VOLTAGE: 600 VDC

WORKING VOLTAGE: 200 VDC

IMPEDANCE: 50 OHMS

OPERATING TEMPERATURE: -20°C TO $+85^{\circ}\text{C}$



AMPHENOL PART NUMBER 456E-107S

DRAWN <i>K. LAMBIE</i>		DATE <i>JUN18/07</i>		Amphenol Canada Corp.		4		
DESIGNED								
CHECKED				456E SERIES B.N.C. CAPACITIVELY DECOUPLED CONNECTOR, FRONT MOUNT, SOLDER CUP, SILVER PLATED CONTACT, RoHS COMPLIANT				
I. E. APPRD.								
Q. A. APPRD.								
DWG. APPRD.								
ENG. REL. NO.				DWG C		DRAWING NO. P-456E-107S	REV. A	
REF. <i>EAR 13136</i>								
DIMENSIONS ARE IN <i>INCHES [mm]</i>		CODE ID. NO. <i>03554</i>		SCALE <i>4/1</i>		WT. -----	SURF. -----	SHEET <i>1</i> OF <i>1</i>

THIS DOCUMENT CONTAINS PROPRIETARY INFORMATION AND SUCH INFORMATION MAY NOT BE DISCLOSED TO OTHERS FOR ANY PURPOSE OR USED FOR MANUFACTURING PURPOSES WITHOUT WRITTEN PERMISSION FROM AMPHENOL CANADA CORP.