



Chipsmall Limited consists of a professional team with an average of over 10 year of expertise in the distribution of electronic components. Based in Hongkong, we have already established firm and mutual-benefit business relationships with customers from,Europe,America and south Asia,supplying obsolete and hard-to-find components to meet their specific needs.

With the principle of “Quality Parts,Customers Priority,Honest Operation,and Considerate Service”,our business mainly focus on the distribution of electronic components. Line cards we deal with include Microchip,ALPS,ROHM,Xilinx,Pulse,ON,Everlight and Freescale. Main products comprise IC,Modules,Potentiometer,IC Socket,Relay,Connector.Our parts cover such applications as commercial,industrial, and automotives areas.

We are looking forward to setting up business relationship with you and hope to provide you with the best service and solution. Let us make a better world for our industry!



Contact us

Tel: +86-755-8981 8866 Fax: +86-755-8427 6832

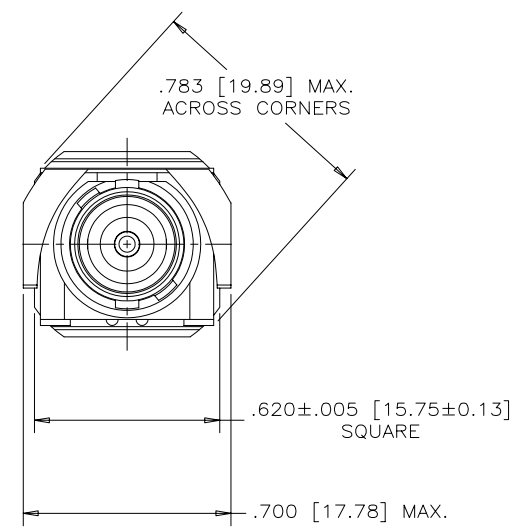
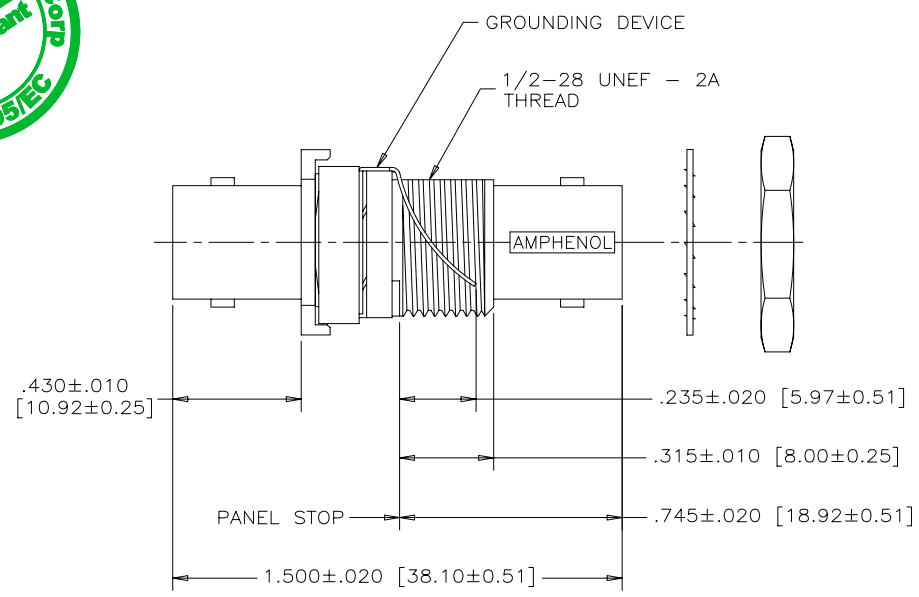
Email & Skype: info@chipsmall.com Web: www.chipsmall.com

Address: A1208, Overseas Decoration Building, #122 Zhenhua RD., Futian, Shenzhen, China





REVISIONS			
REV	ECN, ERN NO.	DATE	APPRD.
A	PRODUCT DRAWING (EAR 13136)	JUN18/07	K.L.



MECHANICAL: ALL MATERIALS ARE RoHS COMPLIANT

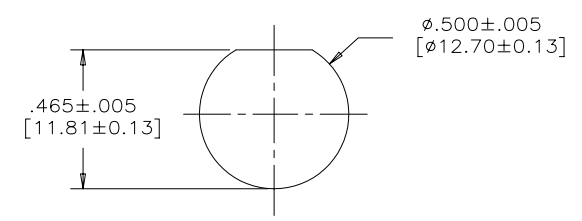
THREADED HOUSING: THERMOPLASTIC, FLAMMABILITY RATING UL94V-0

GROUNDING DEVICE: COPPER ALLOY, NICKEL PLATED

METAL BODY: HIGH STRENGTH ZINC DIECAST, NICKEL PLATED.

CENTER CONTACT: PHOSPHOR BRONZE, PLATED WITH 30 μ " [0.76 MICRONS]
GOLD OVER 50 μ " [1.27 MICRONS] NICKEL.

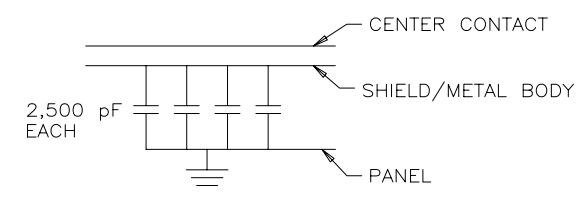
MOUNTING NUT: BRASS, NICKEL PLATED



RECOMMENDED PANEL CUTOUT

ELECTRICAL SPECIFICATION:

CAPACITANCE	10000 pF \pm 15%
DIELECTRIC WITHSTANDING VOLTAGE	1000 VDC
	500 V RMS
WORKING VOLTAGE	200 VDC
IMPEDANCE	50 OHMS NOMINAL
OPERATING TEMPERATURE	-20°C TO +85°C



CIRCUIT DIAGRAM

AMPHENOL PART NUMBER: 456E-915

DRAWN K. LAMBIE		DATE JUN18/07	Amphenol Canada Corp.	
DESIGNED				
CHECKED			456E SERIES B.N.C. CAPACITIVELY DECOUPLED JACK TO JACK ADAPTER, PANEL MOUNT WITH HARDWARE, 50 OHM, 10,000pF, RoHS COMPLIANT	
I. E. APPRD.				
Q. A. APPRD.				
DWG. APPRD.				
ENG. REL. NO.			DWG C	DRAWING NO. P-456E-915
REF. EAR #13136				REV. A
DIMENSIONS ARE IN INCHES [mm]		CODE ID. NO. 03554	SCALE 3/1	WT. -----
			SURF. -----	SHEET 1 of 1

THIS DOCUMENT CONTAINS PROPRIETARY INFORMATION AND SUCH INFORMATION MAY NOT BE DISCLOSED TO OTHERS FOR ANY PURPOSE OR USED FOR MANUFACTURING PURPOSES WITHOUT WRITTEN PERMISSION FROM AMPHENOL CANADA CORP.