



Chipsmall Limited consists of a professional team with an average of over 10 year of expertise in the distribution of electronic components. Based in Hongkong, we have already established firm and mutual-benefit business relationships with customers from,Europe,America and south Asia,supplying obsolete and hard-to-find components to meet their specific needs.

With the principle of "Quality Parts,Customers Priority,Honest Operation,and Considerate Service",our business mainly focus on the distribution of electronic components. Line cards we deal with include Microchip,ALPS,ROHM,Xilinx,Pulse,ON,Everlight and Freescale. Main products comprise IC,Modules,Potentiometer,IC Socket,Relay,Connector.Our parts cover such applications as commercial,industrial, and automotives areas.

We are looking forward to setting up business relationship with you and hope to provide you with the best service and solution. Let us make a better world for our industry!



## Contact us

Tel: +86-755-8981 8866 Fax: +86-755-8427 6832

Email & Skype: info@chipsmall.com Web: www.chipsmall.com

Address: A1208, Overseas Decoration Building, #122 Zhenhua RD., Futian, Shenzhen, China

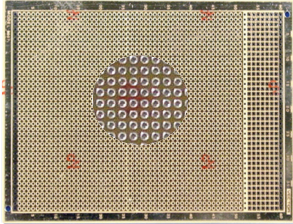




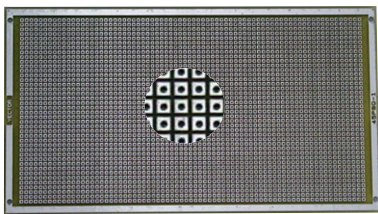
ELECTRONICS & TECHNOLOGY, INC.

# Vectorbord® Plugbord™

## Square Pads-Per-Hole with 0.042" Holes, .100" Grid



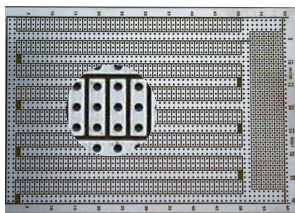
**8007 4.50"Hx6.50"L x .062" TH**  
 0.100" grid square Pad-Per-Hole Pattern on component side - overall Ground Plane pattern on wiring side .042" holes not plated thru with .085" square isolated solder pads  
 I/O area w/square solder pads for mounting connector  
 16-Pin DIP= 60  
 Material: CEM-1  
 WW Terminals: T44, T46, T49, T68  
 Solder Terminals: T42-1  
 WW Socket Pin: R32



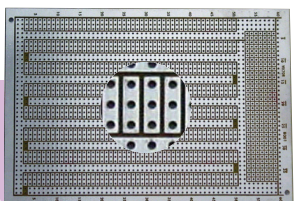
**45P80-1 4.5"Hx8.08"L x .062" TH**  
 0.100" square Pad-Per-Hole Pattern - peripheral Ground Plane pattern on both sides. Top/bottom rows on .200 pitch with no plating.  
 0.042" holes not plated-thru. 0.085" square isolated solder pads on both sides.  
 16-Pin DIP capacity = 80  
 Material: FR-4  
 WW Terminals: T44, T46, T49, T68  
 Solder Terminals: T42-1  
 WW Socket Pin: R32

**45P80-2 4.5"Hx8.08"L x .062" TH**  
 Same as above but holes plated-thru

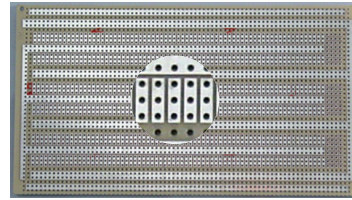
## Three-Hole Solder Pads with 0.042" Holes, .100" Grid



**8001 4.50"Hx6.50"L x .062" TH**  
 0.100" grid 3-Hole Solder Pad on wiring side only Single-sided with no etch & plating on reverse side .042" holes not plated thru  
 0.28" x .080" solder pads  
 I/O area w/square solder pads for mounting connector  
 16-Pin DIP= 20  
 Material: CEM-1  
 WW Terminals: T44, T46, T49, T68  
 Solder Terminals: T42-1, K24C, K31C  
 WW Socket Pin: R32



**8023 4.5"Hx6.5"L x .062" TH**  
 0.100" grid, 3-hole Pads Pattern on both sides. 0.042" plated-thru holes. I/O area with square connector mounting.  
 Solder coated pattern.  
 Material: FR-4  
 WW Terminals: T44, T46, T49, T68  
 Solder Terminals: T42-1  
 WW Socket Pin: R32



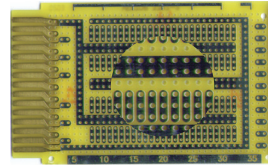
**3677-6 4.50"Hx8.08"L x .062" TH**  
 0.100" grid 3-Hole Solder Pad on wiring side only. Single-sided with no etch & plating on reverse side  
 .042" holes not plated thru  
 0.28" x .080" solder pads  
 16-Pin DIP= 21  
 Material: CEM-1  
 WW Terminals: T44, T46, T49, T68  
 Solder Terminals: T42-1  
 WW Socket Pin: R32

Vectorbord® Plugbord™ is designed for plug-in applications. Many feature gold-plated contacts for edge connectors, mounting for 96 or 160-pin DIN connectors, or 2MM Hard Metric (P1/P2) connector on metric pitch boards. Plugbord™ also offers different basic circuit patterns for solder or wire-wrap connections. All bus and circuit patterns are solder coated for user convenience (except P/N 8020).

Selection of mating edge connectors and DIN connectors located on pages 66-69.

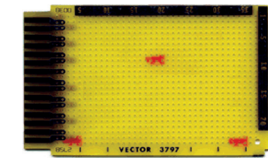
## 30 CONTACTS

**3797-2 2.73"H X 4.5"L X .062"TH**



0.100" grid 3-Hole Solder Pad on one side only.  
 .042" diameter holes not plated-thru.  
 30 gold-plated contacts (15 each side) on .156" centers.  
 16-pin DIP Capacity = 4  
 WW Terminals: T44, T46, T49, T68.  
 Socket pin: R32  
 Solder Connector: R630.  
 Card Cage: CCK 12  
 Material: FR-4

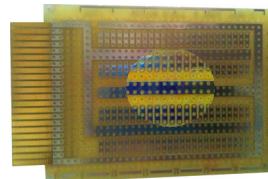
**3797 2.73"H X 4.5"L X .062"TH**



0.100" grid. Gold-plated edge contacts only  
 .042" diameter holes not plated-thru.  
 30 gold-plated contacts (15 each side) on .156" centers.  
 16-pin DIP Capacity = 15  
 WW Terminals: T44, T46, T49, T68.  
 Socket pin: R32  
 Solder Connector: R630.  
 Card Cage: CCK 12  
 Material: FR-4

## 44 CONTACTS

**3795-1 2.73"H X 4.5"L X .062"TH**



0.100" grid 3-Hole Solder Pad on one side only.  
 .042" diameter holes  
 44 gold-plated contacts (22 each side) on .100" centers.  
 16-pin DIP Capacity = 4  
 WW Terminals: T44, T46, T49, T68.  
 Socket pin: R32  
 Wire-Wrap Connector: R644-2  
 Card Cage: CCK 12  
 Material: FR-4

Circbord  
 Plugbord