



Chipsmall Limited consists of a professional team with an average of over 10 year of expertise in the distribution of electronic components. Based in Hongkong, we have already established firm and mutual-benefit business relationships with customers from,Europe,America and south Asia,supplying obsolete and hard-to-find components to meet their specific needs.

With the principle of “Quality Parts,Customers Priority,Honest Operation,and Considerate Service”,our business mainly focus on the distribution of electronic components. Line cards we deal with include Microchip,ALPS,ROHM,Xilinx,Pulse,ON,Everlight and Freescale. Main products comprise IC,Modules,Potentiometer,IC Socket,Relay,Connector.Our parts cover such applications as commercial,industrial, and automotives areas.

We are looking forward to setting up business relationship with you and hope to provide you with the best service and solution. Let us make a better world for our industry!



## Contact us

Tel: +86-755-8981 8866 Fax: +86-755-8427 6832

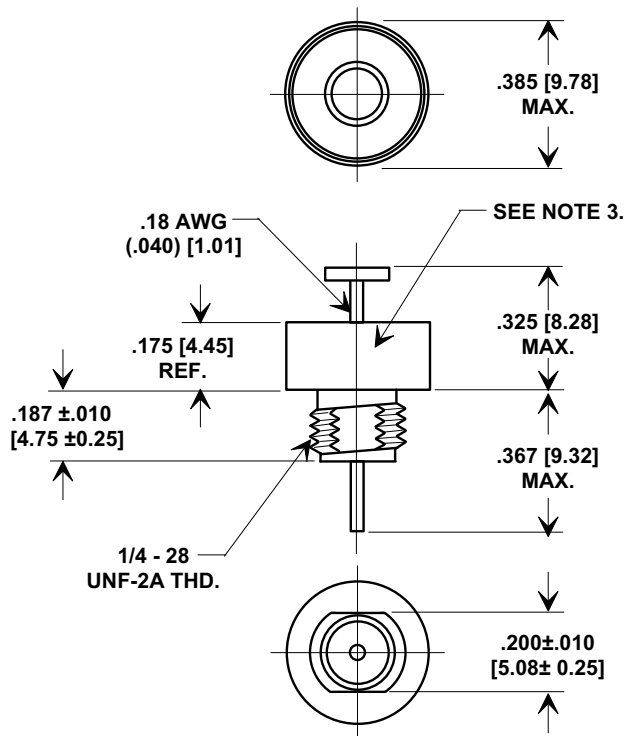
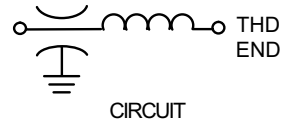
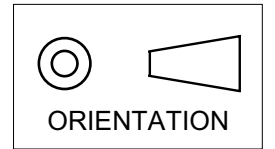
Email & Skype: info@chipsmall.com Web: www.chipsmall.com

Address: A1208, Overseas Decoration Building, #122 Zhenhua RD., Futian, Shenzhen, China



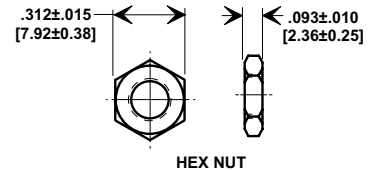
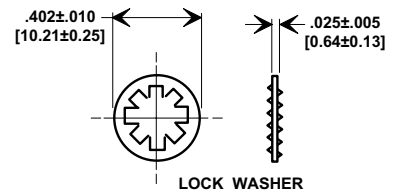
Electrical Testing  
per Tusonix standard  
test plans and Mil-Std-202  
Test Methods.

**MARKETING SALES DRAWING**  
**DIMENSIONS IN INCHES - DO NOT SCALE THIS DRAWING**  
**DIMENSIONS IN METRIC - [ ]**



**NOTES:**

- TUSONIX STANDARD PART NUMBER: 4600-050.  
TUSONIX RoHS COMPLIANT PART NUMBER: 4600-050 LF.  
CUSTOMER MUST SPECIFY STANDARD OR RoHS PART NUMBER WHEN ORDERING.
- MATERIALS:  
BUSHING - TIN PLATED STEEL.  
LEAD STANDARD PART; SOLDER PLATED COPPER.  
RoHS PART; SILVER PLATED COPPER.  
NUT - TIN PLATED BRASS.  
L"WASHER - TIN PLATED PHOSPHOR BRONZE.
- PART MARKING: TRADEMARK AND VARIATION NUMBER.  
STANDARD PART: BLACK INK. RoHS PART: GREEN INK.
- MOUNTING TORQUE: 8 lb - ins. max.
- DCR - .01 max.
- MAX. SOLDER TEMPERATURE 500°F.



MIN. CAP (UF)	DWV (VDC)	I.R. MIN. @ 100 (VDC.)	WORKING VOLTAGE D.C.		CURRENT DC (AMPS)	MIN. NO LOAD INSERTION LOSS (dB) @ 25°C PER MIL-STD-220					TEMP. CHARAC.	
			85°C	125°C		30 KHz	100 KHz	300 KHz	1 MHz	10 MHz		1 GHz
1.4	300	10 G	100	70	15	15	25	34	44	60	70	X7W

REVISION RECORD	0	Title <b>COAXIAL BROADBAND - "C"</b>		
	Original Release C.O. <b>6769</b>		Drawn S.M. 02-14-02	Scale <b>2 X</b>
	METRIC DIMS & NOTES ADDED. E.C. 7-17-92			
	1		Approved T.C. 02-14-02	A
	WVDC REVISED 100 & 70 WERE 80 & 50. L.E. 10-26-92			
2	TUSONIX TUCSON, ARIZONA		4600-050	
RDN TO COMP FMT. S.M. 02-14-02				
3	--TOLERANCES-- Unless Otherwise Specified			
4	DECIMAL ±			
5	ANGLES ±			

X-2015 Rev-0