



Chipsmall Limited consists of a professional team with an average of over 10 year of expertise in the distribution of electronic components. Based in Hongkong, we have already established firm and mutual-benefit business relationships with customers from,Europe,America and south Asia,supplying obsolete and hard-to-find components to meet their specific needs.

With the principle of “Quality Parts,Customers Priority,Honest Operation,and Considerate Service”,our business mainly focus on the distribution of electronic components. Line cards we deal with include Microchip,ALPS,ROHM,Xilinx,Pulse,ON,Everlight and Freescale. Main products comprise IC,Modules,Potentiometer,IC Socket,Relay,Connector.Our parts cover such applications as commercial,industrial, and automotives areas.

We are looking forward to setting up business relationship with you and hope to provide you with the best service and solution. Let us make a better world for our industry!



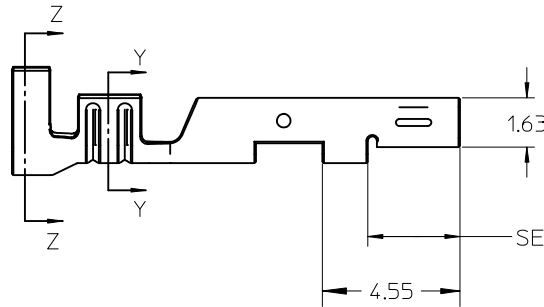
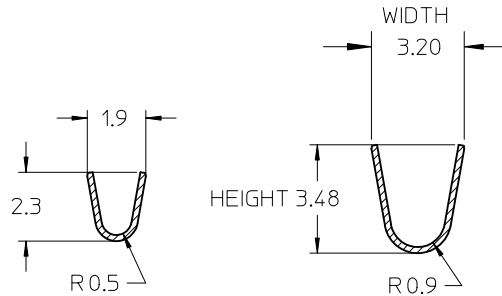
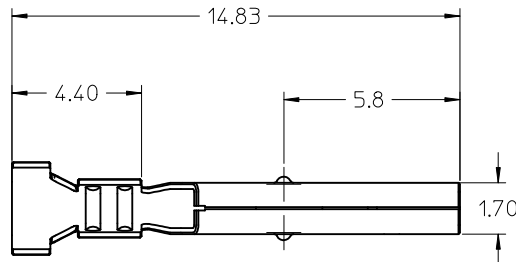
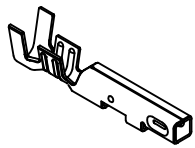
Contact us

Tel: +86-755-8981 8866 Fax: +86-755-8427 6832

Email & Skype: info@chipsmall.com Web: www.chipsmall.com

Address: A1208, Overseas Decoration Building, #122 Zhenhua RD., Futian, Shenzhen, China





NOTES:

- MATERIAL: HIGH PERFORMANCE COPPER ALLOY
- FINISH:
 - 222 - OVERALL TIN: 100 MI MIN OVER NICKEL
 - 228 - SELECT GOLD: 30 MI MIN
 - SELECT TIN: 100 MI MIN
 - OVER NICKEL
- PRODUCT SPECIFICATION: PS-46064-001
- PACKAGING: REEL PACK PER: PK-46055-002
LOOSE PACK PER: PK-5556-003
- TERMINAL TO BE USED WITH ASSY NUMBER: 46064
- WIRE SPECIFICATION: SEE CHART.
- WHEN USING OVERALL TIN PLATED TERMINALS: FOR APPLICATIONS INVOLVING VIBRATION AND/OR THERMAL CYCLING, MOLEX STRONGLY RECOMMENDS THE USE OF NYE LUBRICANT, NYE 760G, ON THE MATING END OF THE TERMINAL. LUBRICANT SHOULD BE APPLIED PRIOR TO INSERTION INTO THE HOUSING.

SECTION Y-Y
CONDUCTOR CRIMP

SECTION Z-Z
INSULATION CRIMP

SEE NOTE 7

| LOOSE PACKAGED MATERIAL NUMBER | REEL PACKAGED MATERIAL NUMBER | FINISH | WIRE SPEC | INSULATION DIA | INSULATION (CRIMPED) | | CONDUCTOR (CRIMPED) | | | | | |
|-----------------------------------|----------------------------------|-------------------|------------------|-------------------|----------------------|------|---------------------|------|--------|------|-------|------|
| | | | | | HEIGHT | | WIDTH | | HEIGHT | | WIDTH | |
| | | | | | MIN | MAX | MIN | MAX | MIN | MAX | MIN | MAX |
| 46055-0007 | 46055-0005 | 222 - TIN | UL1015 18/20 AWG | 2.52 / 2.81 | N/A | 3.20 | 2.70 | 2.90 | 1.05 | 1.15 | 1.50 | 1.70 |
| 46055-0008 | 46055-0006 | 228 - SELECT GOLD | UL1015 18/20 AWG | 2.52 / 2.81 | N/A | 3.20 | 2.70 | 2.90 | 1.05 | 1.15 | 1.50 | 1.70 |

UPDATE NOTE 4
EC NO: UCP2011-1228
DRWN: J JAGUILAR 2010/10/29
CHKD:
APPR: FSMITH 2010/11/09

QUALITY SYMBOLS
 = 0
 = 0
 = 0

GENERAL TOLERANCES (UNLESS SPECIFIED)

| | mm | INCH |
|----------|--------|-------|
| 4 PLACES | ± --- | ± --- |
| 3 PLACES | ± --- | ± --- |
| 2 PLACES | ± 0.25 | ± --- |
| 1 PLACE | ± 0.38 | ± --- |

ANGULAR ± 3 °

DRAFT WHERE APPLICABLE
MUST REMAIN
WITHIN DIMENSIONS

DIMENSION STYLE
MM ONLY

DRAWN BY: KSAMIEC
DATE: 2007/03/22

CHECKED BY: _____
DATE: _____

APPROVED BY: FSMITH
DATE: 2010/11/09

MATERIAL NO.
SEE CHART

SIZE
A

SCALE: 4:1

DESIGN UNITS: METRIC

THIRD ANGLE PROJECTION

TITLE: SEALED MINIFIT H20 RECEPTACLE TERMINAL

MOLEX MOLEX INCORPORATED

DOCUMENT NO. SD-46055-001

SHEET NO. 1 OF 1

THIS DRAWING CONTAINS INFORMATION THAT IS PROPRIETARY TO MOLEX INCORPORATED AND SHOULD NOT BE USED WITHOUT WRITTEN PERMISSION