

Chipsmall Limited consists of a professional team with an average of over 10 year of expertise in the distribution of electronic components. Based in Hongkong, we have already established firm and mutual-benefit business relationships with customers from,Europe,America and south Asia,supplying obsolete and hard-to-find components to meet their specific needs.

With the principle of “Quality Parts,Customers Priority,Honest Operation,and Considerate Service”,our business mainly focus on the distribution of electronic components. Line cards we deal with include Microchip,ALPS,ROHM,Xilinx,Pulse,ON,Everlight and Freescale. Main products comprise IC,Modules,Potentiometer,IC Socket,Relay,Connector.Our parts cover such applications as commercial,industrial, and automotives areas.

We are looking forward to setting up business relationship with you and hope to provide you with the best service and solution. Let us make a better world for our industry!



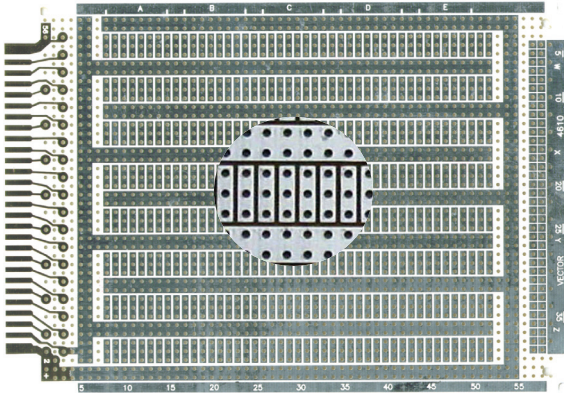
Contact us

Tel: +86-755-8981 8866 Fax: +86-755-8427 6832

Email & Skype: info@chipsmall.com Web: www.chipsmall.com

Address: A1208, Overseas Decoration Building, #122 Zhenhua RD., Futian, Shenzhen, China

STD Bus

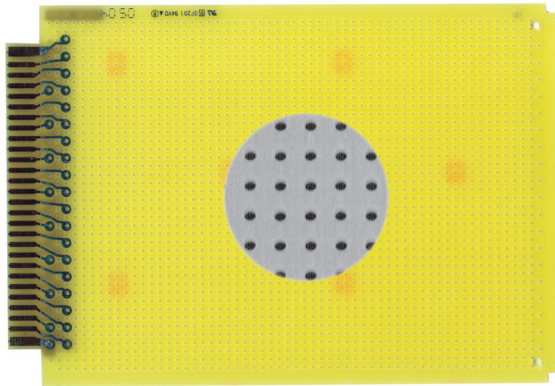


4610 4.5”H x 6.5”L x .062”TH

0.100” grid 0.42” diameter holes. Gold-plated edge contacts with 3-hole solder pad board pattern on wiring side only. Pad area for mounting of ribbon cable I/O connector, 0.280” X 0.080” 3-hole pads on one side, solder-coated copper pads. 56 gold-plated edge contacts (28 on each side) on 0.125” centers.

- 16-Pin DIP= 20
- WW Terminals: T125, T126
- Socket Pin: R32
- Solder Connector: R656-1
- WW Connector: R656-2
- Extender: 3690-16
- Card Cage: CCK13
- Material: CEM-1

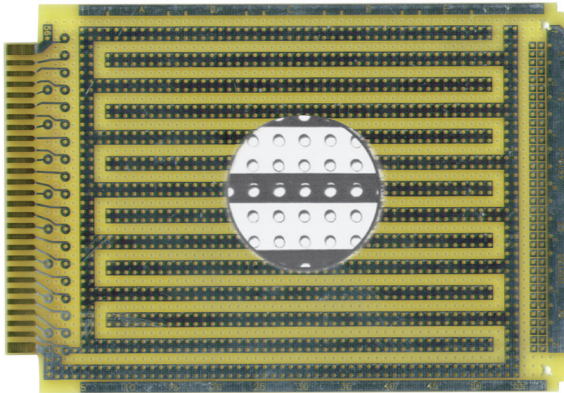
Plugbord



4610-1 4.5”H x 6.5”L x .062”TH

0.100” grid 0.42” diameter holes. Gold-plated edge contacts only. Bare prototyping board allows unrestricted component placement. 56 gold-plated edge contacts (28 on each side) on 0.125” centers.

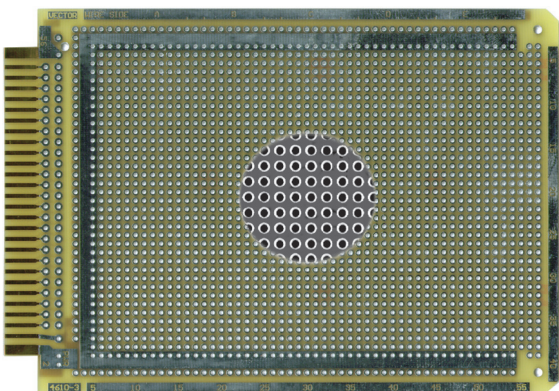
- 16-Pin DIP= 59:
- WW Terminals: T125, T126
- Socket Pin: R32
- Solder Connector: R656-1
- WWW Connector: R656-2
- Extender: 3690-16
- Card Cage: CCK13
- Material: FR-4



4610-2 4.5”H x 6.5”L x .062”TH

0.100” grid 0.42” diameter holes. Gold-plated edge contacts with interleaved busses on wiring side only, solder-coated copper pads. PAD area for mounting of ribbon cable I/O connector. 5V bus terminated to pins 1 & 2; ground bus terminates to pins 3 & 4. 56 gold-plated edge contacts (28 on each side) on 0.125” centers.

- 16-Pin DIP= 35:
- WW Terminals: T125, T126
- Socket Pin: R32
- Solder Connector: R656-1
- WWW Connector: R656-2
- Extender: 3690-16
- Card Cage: CCK13
- Material: FR-4



4610-3 4.5”H x 6.5”L x .062”TH

0.100” grid 0.42” diameter holes. Gold-plated edge contacts with Pad-per-Hole pattern on both sides, holes plated-thru. Solder-coated copper pads. Pad area for mounting of ribbon cable I/O connector. 0.080” diameter pads around each hole both sides and peripheral bus connects to edge contacts; 5V bus terminated to pins 1 & 2; ground bus terminates to pins 3 & 4. 56 gold-plated edge contacts (28 on each side) on 0.125” centers.

- 16-Pin DIP= 52
- WW Terminals: T125, T126
- Socket Pin: R32
- Solder Connector: R656-1
- WW Connector: R656-2
- Extender: 3690-16
- Card Cage: CCK13
- Material: FR-4