



Chipsmall Limited consists of a professional team with an average of over 10 year of expertise in the distribution of electronic components. Based in Hongkong, we have already established firm and mutual-benefit business relationships with customers from,Europe,America and south Asia,supplying obsolete and hard-to-find components to meet their specific needs.

With the principle of “Quality Parts,Customers Priority,Honest Operation,and Considerate Service”,our business mainly focus on the distribution of electronic components. Line cards we deal with include Microchip,ALPS,ROHM,Xilinx,Pulse,ON,Everlight and Freescale. Main products comprise IC,Modules,Potentiometer,IC Socket,Relay,Connector.Our parts cover such applications as commercial,industrial, and automotives areas.

We are looking forward to setting up business relationship with you and hope to provide you with the best service and solution. Let us make a better world for our industry!



Contact us

Tel: +86-755-8981 8866 Fax: +86-755-8427 6832

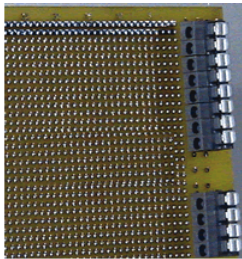
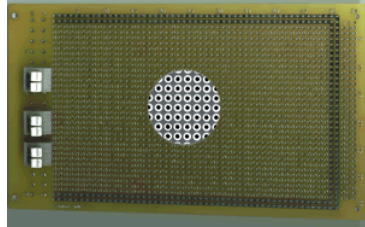
Email & Skype: info@chipsmall.com Web: www.chipsmall.com

Address: A1208, Overseas Decoration Building, #122 Zhenhua RD., Futian, Shenzhen, China



 ELECTRONICS & TECHNOLOGY, INC.					
	VME VME64X CompactPCI®				
A Fine Technology Group					
Home	About Vector	Distributors	Sales	Contact Us	Catalog Request

3U Euroblock(tm) Protoboard with Terminal blocks PART NO. : 4614-5



4614-5-XX	Mounted on EuroBlock Protoboard
4614-5-02	single dual-pole
4614-5-04	two dual-pole
4614-5-06	three dual-pole
4614-5-08	four dual-pole
4614-5-10	five dual-pole
4614-5-12	six dual-pole
4614-5-14	seven dual-pole
4614-5-16	eight dual-pole

Same as 4614-3 but instead of 96 pin DIN, includes array of PCB hi-current terminal

Description :

- Press-fit dual-pole terminal blocks accepts 14-20 AWG wire. Pushbutton release for each pole.
- Terminal block leads extend 1/8" below bord.
- Available in 2-pole to 16-pole
- PCB has pad-per-hole pattern, column and row legends.
- Pad and bus surfaces solde-plated.

Circuit Pattern :	Pad-Per-Hole
16 Pin DIP Capacity :	30
Hole Diameter :	0.042" { 1.0668 mm }
Grid :	0.100" x 0.100" { 2.54mm X 2.54mm }
Dimension { H, W, T } :	3.94" x 6.30" x 0.062" -----> { 3U x 160mm }
Material :	FR4 Epoxy Glass { MIL - P13949 type Gf }
Wire-Wrap Terminals :	T44, T46, T49 & T68
96 Pin DIN Connector :	RE96MWR { Available Separately }
Wire-Wrap Socket Pins :	R32
Recommended Card Cage:	CCK160-3U Series Card Cage { Subracks }
NEMA Grade :	FR4
UL Flammability Class :	94V - 0

email us your requirements: inquire@vectorelect.com
 11115 Vanowen St., North Hollywood, CA - 91605, USA
 Tel: (818) 985 8208, (800) 423 5659; Fax: (818) 985 7708

Circlebord®, Vectorbord® and VectorPak® are registered trademarks of Vector Electronics & Technology, Inc.
 CompactPCI® is a registered trademark of PCIMG. © 2001 Vector Electronics & Technology, Inc. - All Rights Reserved
webmaster@vectorelect.com