



Chipsmall Limited consists of a professional team with an average of over 10 year of expertise in the distribution of electronic components. Based in Hongkong, we have already established firm and mutual-benefit business relationships with customers from,Europe,America and south Asia,supplying obsolete and hard-to-find components to meet their specific needs.

With the principle of “Quality Parts,Customers Priority,Honest Operation,and Considerate Service”,our business mainly focus on the distribution of electronic components. Line cards we deal with include Microchip,ALPS,ROHM,Xilinx,Pulse,ON,Everlight and Freescale. Main products comprise IC,Modules,Potentiometer,IC Socket,Relay,Connector.Our parts cover such applications as commercial,industrial, and automotives areas.

We are looking forward to setting up business relationship with you and hope to provide you with the best service and solution. Let us make a better world for our industry!



## Contact us

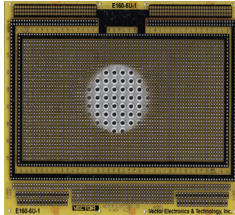
Tel: +86-755-8981 8866 Fax: +86-755-8427 6832

Email & Skype: info@chipsmall.com Web: www.chipsmall.com

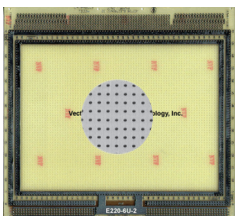
Address: A1208, Overseas Decoration Building, #122 Zhenhua RD., Futian, Shenzhen, China



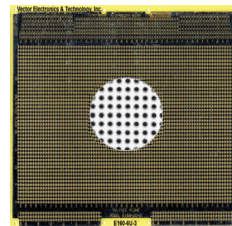
**96-PIN DIN VME EUROCARD 6U**



**E160-6U-1 9.19"H x 6.3"L x .062" TH**  
**E220-6U-1 9.19"H x 8.66"L x .062" TH**  
 (233mm x 220mm & 160mm)  
 0.100" grid in 6U Eurocard size. Pad-Per-Hole pattern both sides with plated-thru holes. Voltage and ground busses on board perimeter both sides. Row and column legends. 0.042" diameter holes.  
 16 pin DIP Capacity: 100, 140 Socket Pin: R32  
 WW Terminals: T44, T46, T49, T68  
 Male Right Angle WW Connector: RE96MWR  
 Extender: VMEE-M Material: FR-4  
 Card Cage: CCK160-6U, CCK220-6U

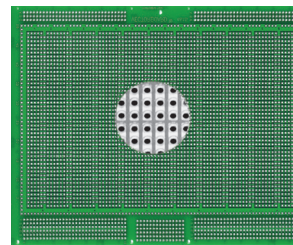


**E160-6U-2 9.19"H x 6.3"L x .062" TH**  
**E220-6U-2 9.19"H x 8.66"L x .062" TH**  
 (233mm x 220mm or 160mm)  
 0.100" grid in 6U Eurocard size. Voltage and ground busses on board perimeter both sides. Row and column legends. Bare inner prototype area with no pads both sides. 0.042" diameter holes.  
 16 pin DIP Capacity: 100, 140 Socket Pin: R32  
 WW Terminals: T44, T46, T49, T68  
 Male Right Angle WW Connector: RE96MWR.  
 Extender: VMEE-M. Material: FR-4.  
 Card Cage: CCK160-6U, CCK220-6U



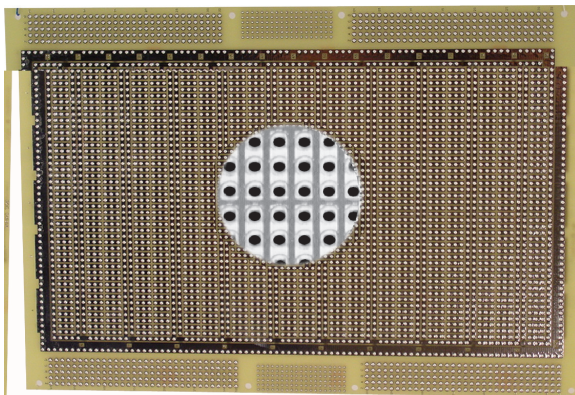
**96-PIN DIN EUROCARD 6U**

**E160-6U-3 9.19"H x 6.3"L x .062" TH**  
**E220-6U-3 9.19"H x 8.66"L x .062" TH**  
 (233mm x 220mm or 160mm)  
 0.100" grid in 6U Eurocard size. Overall voltage ground plane with no pads or busses on either side provide excellent shielding and power distribution. Row and column legends. To simulate plated-thru holes committed to voltage or ground planes, use Vector T123 eyelets. To commit Wire Wrap pins to voltage or ground planes, use Vector T124 solder washers 0.055" diameter holes. 16 pin DIP Capacity: 105, 168 Socket Pin: R32, R53 Male Right Angle WW Connector: RE96MWR. Extender: VMEE-M. Material: FR-4  
 Card Cage: CCK160-6U, CCK220-6U



**4615 9.19"H x 6.3"L x .062" TH**  
**(233.4mmx160mm)**  
 0.100" grid in 6U Eurocard size (9.19" x 6.3"),  
 3-Hole Solder Pad (0.28" x 0.080")  
 .042" holes plated thru on 2 sides  
 16-Pin DIP= 50  
 Material: FR4 Epoxy Glass  
 WW Terminals: T44, T46, T49, T68  
 WW Socket Pin: R32  
 Rec.Card Cage:CCK160-6U  
 96-Pin Din Connector: RE96MWR

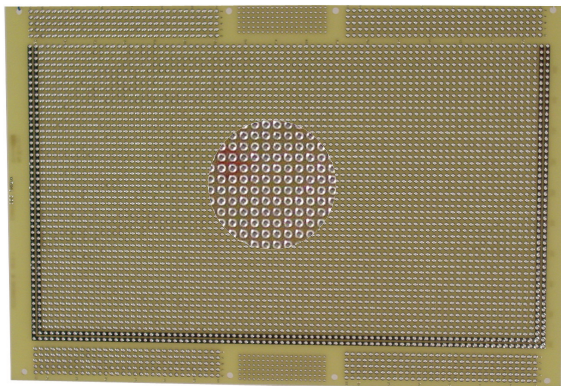
**160-PIN VME64X EUROCARD**



**4616 9.19"H x 6.3"L x .062" TH**  
 (233mm x160mm)  
**4616P3 With P1, P2, P0 connectors**  
 (installed on back of card)

0.100" grid in 6U Eurocard size. Three-hole solder pad (0.28" x 0.080") pattern both sides with plated-thru holes. Interleaved busses on both sides, back to back. .042" diameter holes and column legends. Green soldermask board has mounting for 5-row P1 and P2 VME64X connectors and 6-row HM P0 connectors. Both can mount on front OR back of card

16-Pin DIP= 50 Material:  
 WW Terminals: T44, T46, T49, T68  
 WW Socket Pin: R32  
 Male Right Angle WW Connector: RE96MWR  
 Card Cage:CCK28-84-00



**4616-1 9.19"H x 6.3"L x .062" TH**  
 (233mm x160mm)  
**4616-1P3 With P1, P2, P0 connectors**  
 (installed on back of card)

0.100" grid in 6U Eurocard size. Pad-Per-Hole pattern both sides with plated-thru holes. Voltage and ground busses on board perimeter both sides. Column legends.

0.042" diameter holes.  
 16-Pin DIP= 100 Material:  
 WW Terminals: T44, T46, T49, T68  
 WW Socket Pin: R32  
 Male Right Angle WW Connector:  
 RE96MWR  
 Card Cage:CCK28-84-00

Plugbord