



Chipsmall Limited consists of a professional team with an average of over 10 year of expertise in the distribution of electronic components. Based in Hongkong, we have already established firm and mutual-benefit business relationships with customers from,Europe,America and south Asia,supplying obsolete and hard-to-find components to meet their specific needs.

With the principle of “Quality Parts,Customers Priority,Honest Operation,and Considerate Service”,our business mainly focus on the distribution of electronic components. Line cards we deal with include Microchip,ALPS,ROHM,Xilinx,Pulse,ON,Everlight and Freescale. Main products comprise IC,Modules,Potentiometer,IC Socket,Relay,Connector.Our parts cover such applications as commercial,industrial, and automotives areas.

We are looking forward to setting up business relationship with you and hope to provide you with the best service and solution. Let us make a better world for our industry!



Contact us

Tel: +86-755-8981 8866 Fax: +86-755-8427 6832

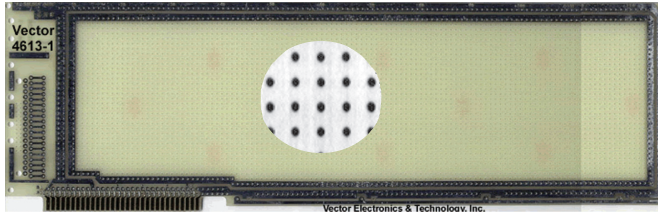
Email & Skype: info@chipsmall.com Web: www.chipsmall.com

Address: A1208, Overseas Decoration Building, #122 Zhenhua RD., Futian, Shenzhen, China



IBM PC, XT

Plugbord



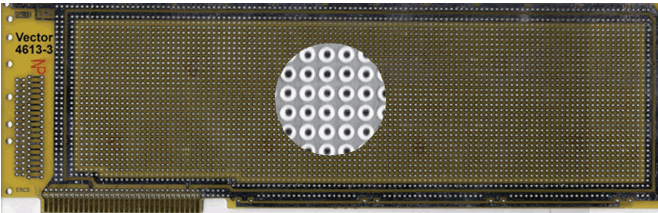
4613-1

Circuit Pattern:
Contacts:
Width/Thick:
Height:
16-Pin DIP Capacity:
Material:
V/G Terminals:
Socket Pins:
Extender:
Hole Diameter:

IBM PC, XT

Peripheral Buses
 31/62 @ .1" Ctrs
 Ni/Gold
 13.25"/.062"
 4.2"
 93
 FR4 Epoxy Glass
 T44, T46, T49, T68
 R32
 3690-26
 .042"

- 0.100" grid
- Voltage and ground buses around board perimeter, both sides
- Auxiliary bus line along lower edge of board, both sides
- I/O mounting area for 37-pin D-subminiature and ribbon cable connectors
- Mounting Bracket and hardware kit included (HD36B)



4613-3

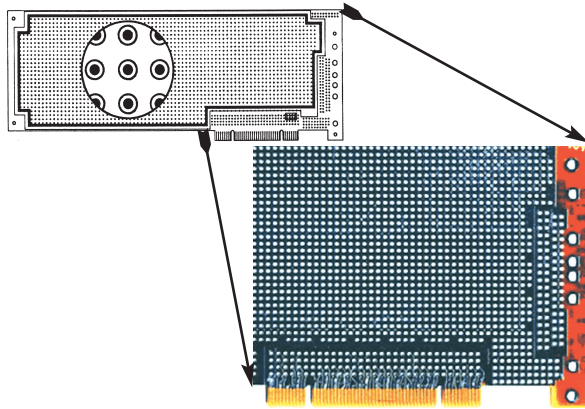
Circuit Pattern:
Contacts:
Width/Thick:
Height:
16-Pin DIP Capacity:
Material:
V/G Terminals:
Socket Pins:
Extender:
Hole Diameter:

IBM PC, XT

Pad-Per-Hole
 31/62 @ .1" Ctrs
 Ni/Gold
 13.25"/.062"
 4.2"
 154
 FR4 Epoxy Glass
 T44, T46, T49, T68
 R32
 3690-26
 .042"

- 0.100" grid
- Plated-thru holes
- Voltage and ground buses around board perimeter
- I/O mounting area for 37-pin D-subminiature and ribbon cable connectors
- Mounting Bracket and hardware kit included (HD36B)

PCI



4624-3

4624-4

(Same as 4624-3 but no overall GND between pads)

Circuit Pattern:
Contacts:
Width/Thick:
Height:
16-Pin DIP Capacity:
Material:
V/G Terminals:
Extender:
Hole Diameter:

PCI Expansion Card

Pad-Per-Hole & Peripheral Buses
 120 @ 0.05" Ctrs
 Ni/Gold
 12.28" (std. size inc. extender portion of 1.06") / .062"
 4.5"
 79 plus PGAs
 FR4 Epoxy Glass
 T125, T126
 3690-34-5V or -3V
 .042"

- 0.100" grid
- For 32-bit environment, ISA format, 4 layer board
- Universal etched tab geometry fits both 3.3V and 5.0V tab notch patterns
- Mounting Bracket included
- Peripheral buses for voltage and ground distribution
- Isolated pads with plated thru holes
- I/O mounting area for D-subminiature and ribbon cable connectors

Mounting Bracket Kit

Mounting Bracket Kit with hardware for IBM PC, AT & EISA P.C. boards.
 Pattern has "knock out" cutouts for "D" subminiature connectors.

HD36B

