



Chipsmall Limited consists of a professional team with an average of over 10 year of expertise in the distribution of electronic components. Based in Hongkong, we have already established firm and mutual-benefit business relationships with customers from,Europe,America and south Asia,supplying obsolete and hard-to-find components to meet their specific needs.

With the principle of “Quality Parts,Customers Priority,Honest Operation,and Considerate Service”,our business mainly focus on the distribution of electronic components. Line cards we deal with include Microchip,ALPS,ROHM,Xilinx,Pulse,ON,Everlight and Freescale. Main products comprise IC,Modules,Potentiometer,IC Socket,Relay,Connector.Our parts cover such applications as commercial,industrial, and automotives areas.

We are looking forward to setting up business relationship with you and hope to provide you with the best service and solution. Let us make a better world for our industry!



Contact us

Tel: +86-755-8981 8866 Fax: +86-755-8427 6832

Email & Skype: info@chipsmall.com Web: www.chipsmall.com

Address: A1208, Overseas Decoration Building, #122 Zhenhua RD., Futian, Shenzhen, China





Vectorbord® Backplanes Power Interface, P47

Vectorbord® Power Supply Backplanes

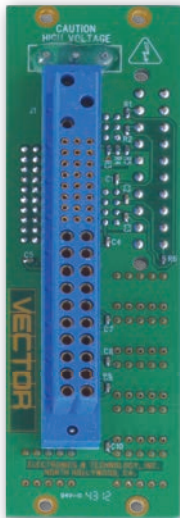
Power supply P47 interface backplane boards provide a modular approach for the addition of plug-in, hot-swap power supplies. As a result there is no need to modify expensive backplanes to incorporate redundant power supplies or N+1 configurations. Multiple power supply backplanes may be bridged together for additional power supply requirements.

This backplane routes the AC or DC input to the power supply, which converts it to the necessary voltages for CompactPCI or VME and then routes those voltages to power lugs on the rear of the backplane. Power connections can then be easily made to existing backplanes.

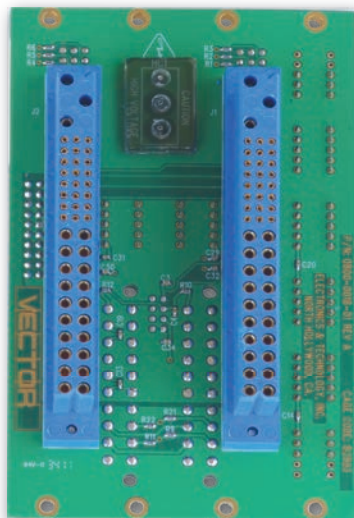
Features

- Power Interface Specification PICMG 2.11 Rev 1.0
- Input Power : AC or DC (3-pin AMP Mate-N-Lok Connector)
- DC output voltages : +5V, +3.3V, +12V, -12V
- Voltage output options
 - 20-pin ATX Connector or Power Bugs (Screw Terminals) for higher current requirements
- Local or Remote voltage sensing options
- Geographical address headers for each power supply

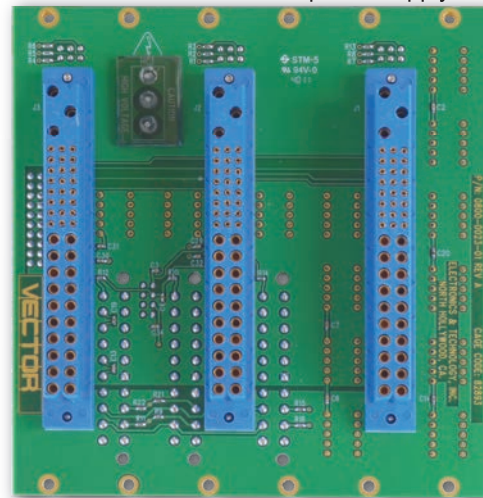
Backplanes



4626-11



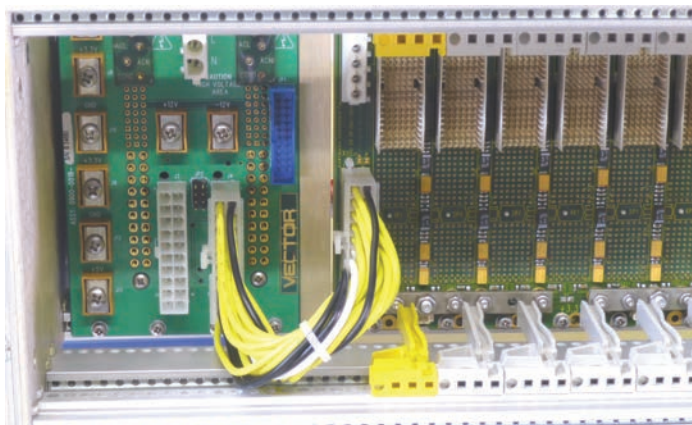
4626-12



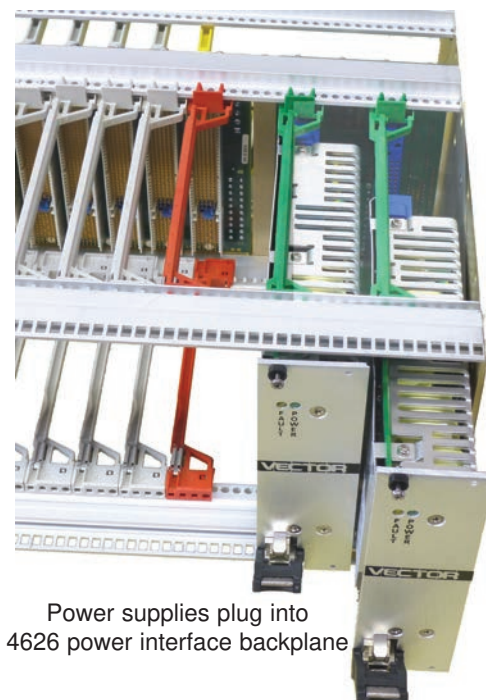
4626-14

| Model No. | Size | Description |
|-----------|----------------------------------|---|
| 4626-11 | 3U x 8HP (5.067"H x 1.544"W) | Power backplane, single P47, for one plug-in power supply |
| 4626-12 | 3U x 16HP (5.067"H x 3.144"W) | Power backplane, dual P47, for two plug-in power supplies |
| 4626-14 | 3U x 24HP (5.067"H x 4.744"W) | Power backplane, triple P47, for three plug-in power supplies |

See page 80 for Plug-In Power Supplies for above



4626 ATX connection to cPCI backplane or screw terminals (power bug) wiring



Power supplies plug into 4626 power interface backplane

