

Chipsmall Limited consists of a professional team with an average of over 10 year of expertise in the distribution of electronic components. Based in Hongkong, we have already established firm and mutual-benefit business relationships with customers from,Europe,America and south Asia,supplying obsolete and hard-to-find components to meet their specific needs.

With the principle of “Quality Parts,Customers Priority,Honest Operation,and Considerate Service”,our business mainly focus on the distribution of electronic components. Line cards we deal with include Microchip,ALPS,ROHM,Xilinx,Pulse,ON,Everlight and Freescale. Main products comprise IC,Modules,Potentiometer,IC Socket,Relay,Connector.Our parts cover such applications as commercial,industrial, and automotives areas.

We are looking forward to setting up business relationship with you and hope to provide you with the best service and solution. Let us make a better world for our industry!

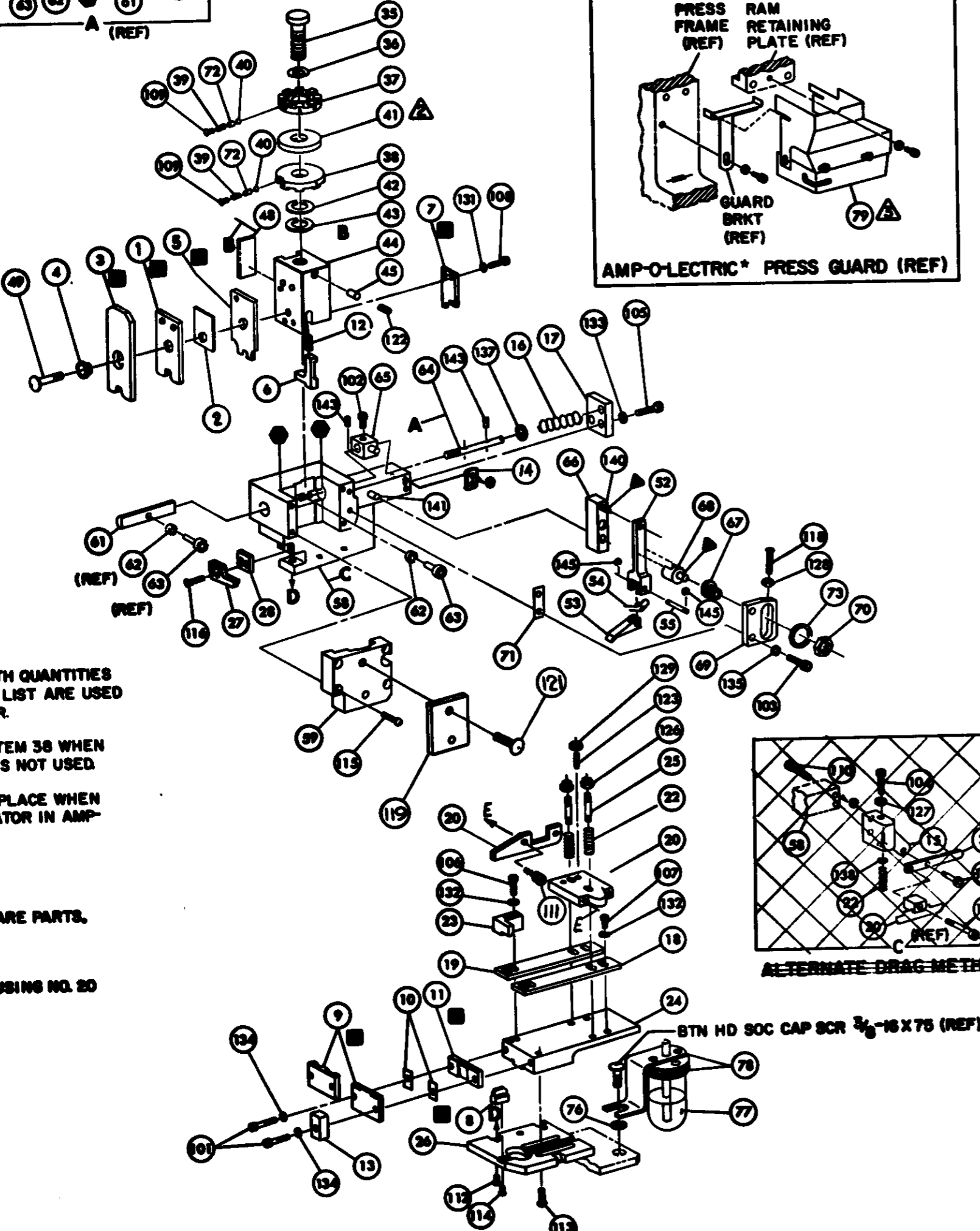
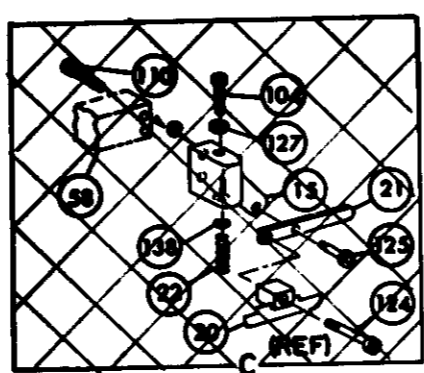
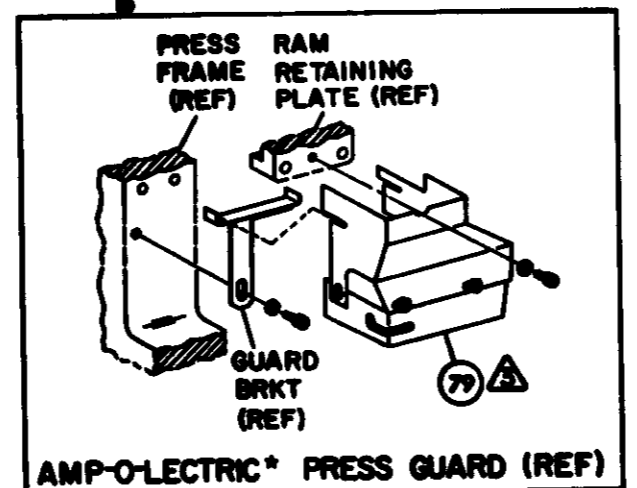
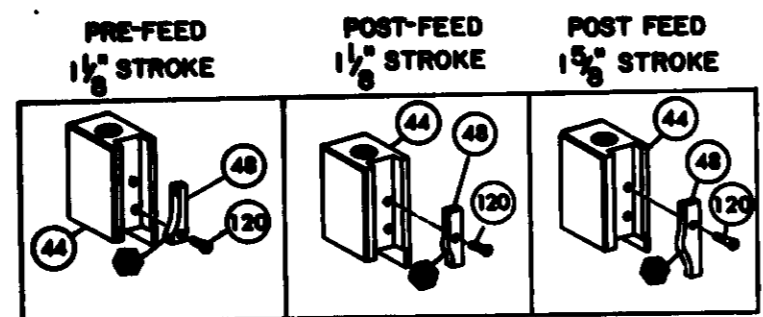
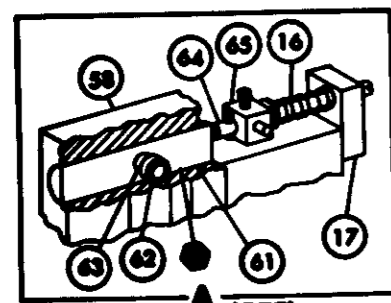


Contact us

Tel: +86-755-8981 8866 Fax: +86-755-8427 6832

Email & Skype: info@chipsmall.com Web: www.chipsmall.com

Address: A1208, Overseas Decoration Building, #122 Zhenhua RD., Futian, Shenzhen, China



NOTES

1 ONLY THE ITEMS WITH QUANTITIES SPECIFIED ON PARTS LIST ARE USED ON THIS APPLICATOR.

▲ USED IN PLACE OF ITEM 38 WHEN INSULATION CRIMP IS NOT USED.

▲ GUARD MUST BE IN PLACE WHEN OPERATING APPLICATOR IN AMP-O-LECTRIC PRESS.

KEY:

■ RECOMMENDED SPARE PARTS.

▲ LUBRICATE DAILY USING NO. 20 MACHINE OIL.

● GREASE LIGHTLY

QTY	PART NO	DESCRIPTION	QTY	PART NO	DESCRIPTION
2	21045-3	RING, RETAINING 'C' (.187 DIA) FEED PIN	148	454220-1	CAP, RAM
2	5-21028-1	PIN, SLOT SPG (.12 DIA X .50) FD ADJ ROD	144	453736-1	HOUSING
1	1-21030-7	PIN, DOWEL (.187 DIA X 1.50) HOUSING	143		
1	1-21030-1	PIN, DOWEL (.187 DIA X .50) LEVER	142		
	22260-5	WASHER, FLAT (NO 6) DRAG SPRING	141	240624-1	PIN, FEED FINGER
	21899-4	WASHER, FLAT (5/16 DIA) SCR ADJ	140	691499-1	SPRING, FEED FINGER
			139	694921-8	FINGER, FEED
			138	240634-1	LEVER, TERMINAL
2	21024-5	WASHER, LOCK (NO 10) FEED ADJ PLATE	137		
2	21024-5	WASHER, LOCK (NO 10) SHEAR PLATES	136	690686-1	BOLT, CRIMPER
2	21024-5	WASHER, LOCK (NO 10) FEED ROD GUIDE	134	690602-5	CAM, PRE FEED 1 1/2 STROKE
4	21024-4	WASHER, LOCK (NO 8) STRIP GUIDE	133		
2	21024-4	WASHER, LOCK (NO 8) SHEAR BLADE	132		
2	21018-4	NUT, HEX MACH (4-40) DRAG	131	690191-1	PLUG, NYLON
1	21018-5	NUT, HEX MACH (6-32) FD ADJ PLATE	130	455674-5	RAM
	21018-7	NUT, HEX MACH (10-32) DRAG SPRING	129	690125-1	WASHER, LAMINATED
2	21022-2	NUT, HEX SELF-LKG (8-32) DRAG STUD	128	690124-1	WASHER, RAM
	5-21004-7	SCR, SKT HD SHLD (250 DIA X .25) DRAG ARM	127		SPACER, DISC
	21004-5	SCR, SKT HD SHLD (250 DIA X 1.00) DRAG	126	23241-6	BALL, STEEL
	4-21078-8	SCR, SKT SET OVAL POINT (4-40 X .75) DRAG	125	690170-1	SPRING, COMPRESSION
1	21009-2	SCR, SKT SET (1/4-20 X 25) (LOC-WEL) RAM	124	690142-1	DISC, INSULATION
2	21017-2	SCR, DRIVE (*2 X .19) I.D. PLATE	123	5-690692-6	DISC, WIRE
1	1-21002-7	SCR, BUT. HD SKT CAP (6-32 X .38) CAM	122	22480-5	WASHER, SPRING
1	461264-1	PLATE, IDENTIFICATION	121	690212-1	POST, RAM
1	6-23115-5	SCR, PAN HD MACH (6-32 X 1.50) FEED ADJ	118		
2	2-21002-3	SCR, BTN HD SKT CAP (8-32 X .62) STRIPPER	117	456980-	APPLICATOR, BASIC (SUB ASSY)
4	2-21002-9	SCR, BTN HD SKT CAP (10-32 X .75) HSG CAP	116		
1	22733-8	SCR, BTN HD SKT CAP (8-32 X .38) (LOC-WEL) ANVIL	115		
4	3-21002-3	SCR, BTN HD SKT CAP (1/4-20 X .50) STR GDE PL	114	2-690451-5	SPACER, STRIPPER
3	17177-1	SCR, BTN HD SKT CAP (1/4-20 X .62) BASE PL	113	240639-2	STRIPPER
2	1-21000-3	SCR, SKT HD CAP (6-32 X 1.00) DRAG ADPTOR	112	455676-1	PLATE, BASE
	2-21000-4	SCR, SKT HD CAP (6-32 X .25) (LOC-WEL) CP DISC	111	22354-8	DRAG, STUD
2	2-21000-6	SCR, SKT HD CAP (8-32 X .35) SHEAR BLADE	110	455678-1	PLATE, STRIP GUIDE
3	2-21000-6	SCR, SKT HD CAP (8-32 X .35) STRIP GUIDE	109		PLATE, STRIP HOLD
1	2-21000-6	SCR, SKT HD CAP (8-32 X .35) STRIP GUIDE	108	23470-5	SPRING, DRAG
2	3-21000-7	SCR, SKT HD CAP (10-32 X .75) FD ROD GUIDE	107	464451-4	ARM, STOCK DRAG
	3-21000-9	SCR, SKT HD CAP (10-32 X 1.00) DRAG SPRING	106	464452-2	DRAG, STOCK
2	3-21000-6	SCR, SKT HD CAP (10-32 X .62) FD ADJ PLATE	105	3-458030-9	GUIDE, STRIP (REAR)
1	3-21000-4	SCR, SKT HD CAP (10-32 X .38) PIVOT BLK	104	3-458031-9	GUIDE, STRIP (FRONT)
2	3-21000-8	SCR, SKT HD CAP (10-32 X .88) SHEAR PLATE	103	454178-1	GUIDE, FEED ROD
REF	455674-1	GUARD, WINDOW	102	4-22284-9	SPRING, FEED RETURN
REF	465184-9	LUBRICATOR ASSY	101	454665-4	ADAPTER, DRAG
REF	852931-2	OIL, LUBRICATING	79	464524-1	SPACER, DRAG ADAPTER
		SPACER, LUB BRACKET	78		SPACER, HOLD DOWN
			77		SPRING, HOLD DOWN
			76	453654-1	PLATE, REAR SHEAR
			75	2-240645-0	SPACER, SHEAR PLATE
			74	453653-1	PLATE, FRONT SHEAR, RETAINING
			73	453670-6	ANVIL
			72	453656-1	BLADE, SLUG, REAR
			71		HOLD DOWN, TERMINAL
			70	684917-1	SHEAR BLADE, FRONT
			69	238009-1	SPACER, TUBULAR
			68	2-456135-5	CRIMPER, INSULATION
			67	455888-9	SPACER, INSULATION
			66	2-456402-6	CRIMPER, WIRE
			65		
			64		
			63		
			62		
			61		
			60		
			59		
			58		
			57		
			56		
			55		
			54		
			53		
			52		
			51		
			50		
			49		
			48		
			47		
			46		
			45		
			44		
			43		
			42		
			41		
			40		
			39		
			38		
			37		
			36		
			35		
			34		
			33		
			32		
			31		
			30		
			29		
			28		
			27		
			26		
			25		
			24		
			23		
			22		
			21		
			20		
			19		
			18		
			17		
			16		
			15		
			14		
			13		
			12		
			11		
			10		
			9		
			8		
			7		
			6		
			5		
			4		
			3		
			2		
			1		

REMARKS	NO	REV
APPL USED ON MACHINE PART NO	MACH SERIAL NO	DISTRIBUTION
CUSTOMER NAME	APPL SERIAL NO	ORIGINAL
ADDRESS	PURCHASE ORDER	CUSTOMER COPY
CITY	ENG APP	FIELD ENG COPY

CRIMPING DATA				APPLICATOR WILL APPLY	
PAD LTR	CRIMP HEIGHT	WIRE SIZE	STRIP LENGTH	61513	
A	.032	22			
B	.029	24 OR 26			
C	NOT USED				
D	NOT USED				
CRIMP	SIZE	TYPE	FEED	APPL INST	
WIRE	.055	F			
INSUL	.070	O	.535	A1	8039
WIRE RANGE	26 - 22	INSULATION RANGE	0.035 - .065	PRESS NO	565435-5

REMARKS: AMP-O-LECTRIC PRE FEED

SETUP PAGE 18-1
45838-1 628

AMP INCORPORATED
Huntington, Pa.

LOG A D NO 466296-2 P2

MANUFACTURE QUICK CHANGE APPLICATOR
END FEED (RIGHT ANGLE PIN RECPT)