



Chipsmall Limited consists of a professional team with an average of over 10 year of expertise in the distribution of electronic components. Based in Hongkong, we have already established firm and mutual-benefit business relationships with customers from,Europe,America and south Asia,supplying obsolete and hard-to-find components to meet their specific needs.

With the principle of “Quality Parts,Customers Priority,Honest Operation,and Considerate Service”,our business mainly focus on the distribution of electronic components. Line cards we deal with include Microchip,ALPS,ROHM,Xilinx,Pulse,ON,Everlight and Freescale. Main products comprise IC,Modules,Potentiometer,IC Socket,Relay,Connector.Our parts cover such applications as commercial,industrial, and automotives areas.

We are looking forward to setting up business relationship with you and hope to provide you with the best service and solution. Let us make a better world for our industry!



Contact us

Tel: +86-755-8981 8866 Fax: +86-755-8427 6832

Email & Skype: info@chipsmall.com Web: www.chipsmall.com

Address: A1208, Overseas Decoration Building, #122 Zhenhua RD., Futian, Shenzhen, China





MINIATURE PUSH TO MAKE SWITCH

Miniature push button, push to make, red. L 28, D 10mm. Pack of 25.

Description	Code	1+
Push to make switch - 25 pack	3401	



MINIATURE PUSH TO BREAK SWITCH

Miniature push button, push to break, black. L 30, D 12mm. Pack of 10.

Description	Code	1+
Push to break switch - 10 pack	3402	



PCB MOUNT TACTILE SWITCH

A PCB mount switch. Single pole normally open contact.

L 6, W 6, H 9.5mm. Pack of 25.

Description	Code	1+
6mm TACT switch - 25 pack	3414	

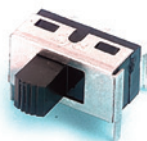


FLAT PROFILE TACTILE SWITCH

A low profile PCB mount switch. Single pole normally open contact.

L 6, W 6, H 4.3mm. Pack of 25.

Description	Code	1+
Flat profile TACT switch - 25 pack	3420	



PCB MOUNT SLIDE SWITCH

Right angle PCB mount slide switch. SPDT contacts.

L 14, W 13.2, H 9.4mm. Pack of 10.

Description	Code	1+
PCB mount slide switch - 10 pack	3415	

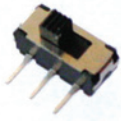


HIGH CURRENT PCB MOUNT SLIDE SWITCH

Right angle PCB mount SPDT high current slide switch. Max current: 3A

L 14, W 13.2, H 9.4mm.

Description	Code	1+	10+
High current PCB mount slide switch	3424		



MINIATURE PCB MOUNT SLIDE SWITCH - 10 PACK

Right angle PCB mount slide switch. SPDT contacts.

L 8.5, W 3.5, H 3.5mm. Pack of 10.

Description	Code	1+	10+
Miniature PCB mount slide switch - 10 pack	3422		

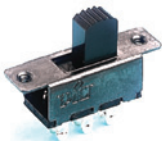


DPDT SLIDE SWITCH

Standard DPDT slide switches with solder tag connections.

L 22, W 8, H 13mm. Pack of 10.

Description	Code	1+
Standard slide switch (large) - 10 pack	3416	
Centre off slide switch (large) - 10 pack	3417	



MINIATURE DPDT SLIDE SWITCH

Miniature DPDT slide switch. L 15, W 7, H 18mm. Pack of 10.

Description	Code	1+
Miniature DPDT slide switch - 10 pack	3404	



SPST ROCKER SWITCH

SPST rocker switch black, rectangular, snap fit.

L 21, W 9.6, H 28.5mm. Pack of 10.

Description	Code	1+
SPST black 'I/O' actuator - 10 pack	3406	



SPST ROUND ROCKER SWITCH

SPST rocker switch black, round, snap fit. L 16.5, Dia 23mm. Pack of 10.

Description	Code	1+
SPST round rocker switch - 10 pack	3407	



SPDT TOGGLE SWITCH

SPDT standard toggle switch.

Body dimensions: L 13, W 8, H 9.8mm. Pack of 10.

Description	Code	1+
SPDT toggle switch - 10 pack	3408	



MINIATURE SPDT TOGGLE SWITCH

SPDT miniature toggle switch.

Body dimensions: **L** 13, **W** 8, **H** 9.5mm. Pack of 10.

Description	Code	1+
Miniature SPDT toggle switch - 10 pack	3423-10	

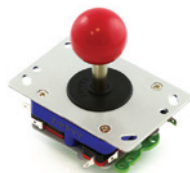


SPST SUB MINIATURE TOGGLE SWITCH

SPST sub miniature toggle switch.

Body dimensions: **L** 8.1, **W** 5.1, **H** 8.6mm. Pack of 10.

Description	Code	1+
Sub-Miniature toggle switch SPST - 10 pack	3413	



ARCADE JOYSTICK

A heavy duty 4-way Pacman-type arcade joystick. The joystick uses four microswitches to detect on/off position and has an ABS plastic and solid alloy construction.

Description	Code	1+
Arcade joystick - short handle	4680	



ARCADE PUSH BUTTONS

These 33mm round momentary convex push buttons are available in a range of bold colours, similar to the ones that you find on arcade games and have a simple screw in design.

Description	Code	1+
Arcade push button 33mm, pink	4676	
Arcade push button 33mm, blue	4677	
Arcade push button 33mm, green	4678	
Arcade push button 33mm, yellow	4679	





SPST SQUARE LATCHING SWITCH

SPST square latching switch. L 34, W 15, H 15mm. Pack of 10.

Description	Code	1+
Square latching push button switch - 10 pack	3405	



VIBRATION SWITCH

Mercury vibration switch. Normally open, pulsed closed on vibration. L 9.5, Dia 8.2mm.

Description	Code	1+
Vibration switch	3412	



NON-MERCURY TILT SWITCH

Non-Mercury tilt switch. Horizontal mounting with make to break changeover at 10° either side of horizontal. L 10.2, Dia 4.7mm.

Description	Code	1+
Non-Mercury tilt switch	3419	



PCB MOUNT TILT SWITCH - VERTICAL MOUNT

Non-Mercury tilt switch, PCB mount, vertical mount. L 6, W 5, H 11mm. Pack of 10.

Description	Code	1+
Vertical tilt switch - 10 pack	3410	



PCB MOUNT TILT SWITCH - 90 DEG MOUNT

Non-Mercury tilt switch, PCB mount, 90° mount. L 6, W 5, H 11mm. Pack of 10.

Description	Code	1+
90° tilt switch - 10 pack	3411	



SPDT MICRO SWITCHES

SPDT micro switch, solder terminals. L 20.1, W 6.5, H 10.2mm. Pack of 10.

Description	Code	1+
Medium lever micro switch - 25mm Lever - 10 pack	3403	
Long lever micro switch - 45mm Lever - 10 pack	3421	