



Chipsmall Limited consists of a professional team with an average of over 10 year of expertise in the distribution of electronic components. Based in Hongkong, we have already established firm and mutual-benefit business relationships with customers from,Europe,America and south Asia,supplying obsolete and hard-to-find components to meet their specific needs.

With the principle of "Quality Parts,Customers Priority,Honest Operation,and Considerate Service",our business mainly focus on the distribution of electronic components. Line cards we deal with include Microchip,ALPS,ROHM,Xilinx,Pulse,ON,Everlight and Freescale. Main products comprise IC,Modules,Potentiometer,IC Socket,Relay,Connector.Our parts cover such applications as commercial,industrial, and automotives areas.

We are looking forward to setting up business relationship with you and hope to provide you with the best service and solution. Let us make a better world for our industry!



## Contact us

Tel: +86-755-8981 8866 Fax: +86-755-8427 6832

Email & Skype: info@chipsmall.com Web: www.chipsmall.com

Address: A1208, Overseas Decoration Building, #122 Zhenhua RD., Futian, Shenzhen, China



NOTES:

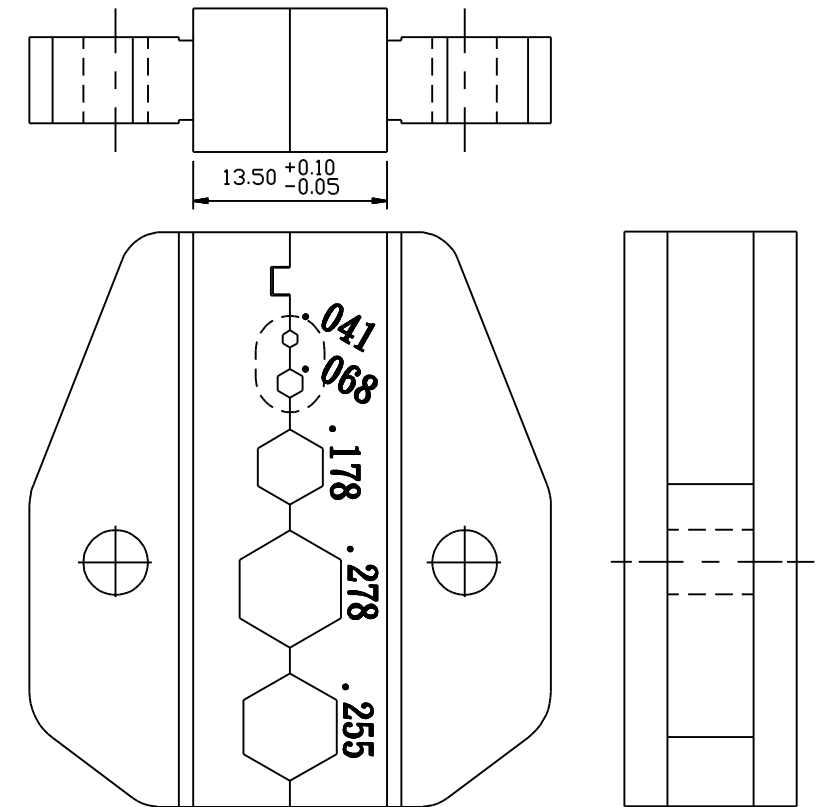
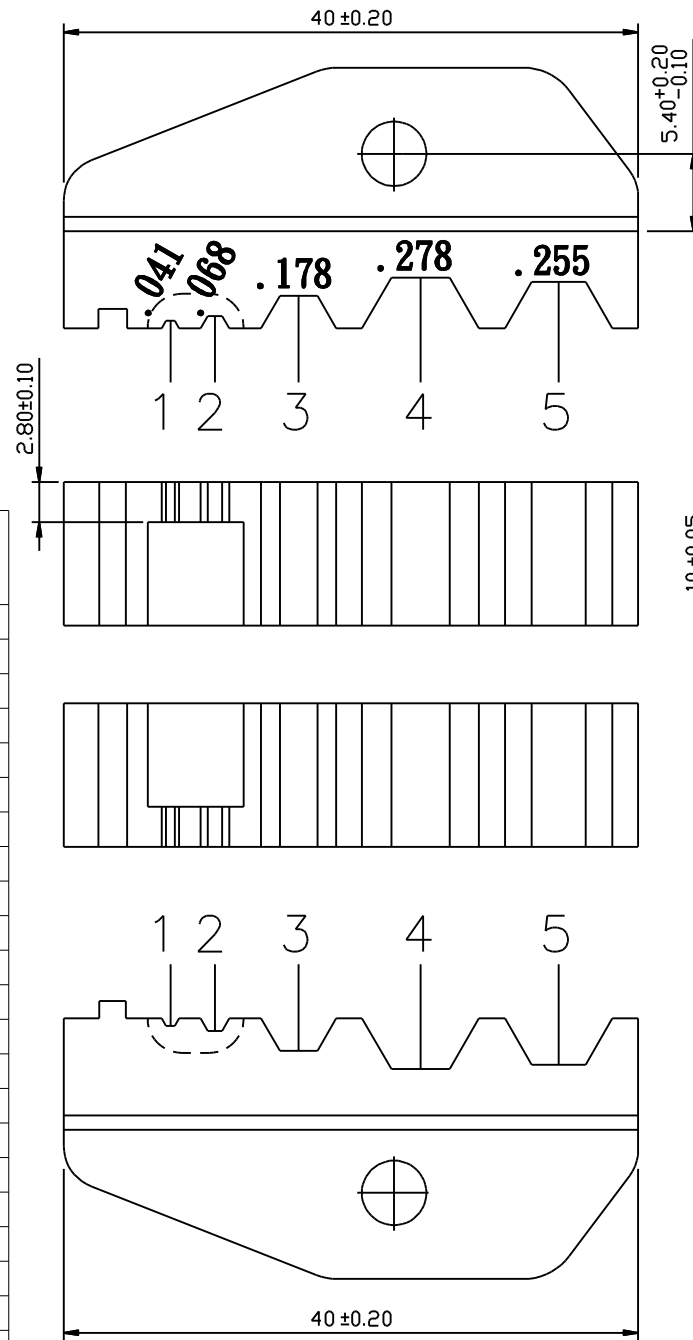
- INITIAL TOOL SETTING REQUIREMENTS:  
WITH DIES FIRMLY AFFIXED IN TOOL ON THE DIE MOUNTING SURFACES,  
CLOSE THE TOOL FULLY (UNTIL THE RATCHET RELEASES) WITH 25-35 LBS, HAND FORCE  
THE DIES MUST BE 'BUTTED' (TOUCHING BOTH FRONT & REAR SURFACES).  
THE RATCHET ADJUSTER WHEEL SHOULD BE POSITIONED IN THE  
CENTER INDENT (+/- ONE INDENT POSITION)
- DO NOT SCALE THIS DRAWING.
- REMOVE ALL BURRS, BREAK SHARP EDGES AND CORNERS  
0.005 MAXIMUM, UNLESS OTHERWISE SPECIFIED.
- UNLESS OTHERWISE SPECIFIED, ALL DIMENSIONS ARE AFTER PLATING.
- PACKAGING:  
A. QUANTITY: SINGLE PACK  
B. PACKAGE MARKING: AMPHENOL RF  
47-2XXXX (SEE TABLE)  
DATE CODE

THIRD ANGLE PROJ.

REVISIONS

REV	DESCRIPTION	DATE	ECO	APPR
A	RELEASE TO MFG.	18-Dec-14	2809	CL/BCG

DIE SET PART NUMBER	DIE SET OPENINGS IN INCHES (MM)				
	(UNLESS OTHERWISE NOTED, ALL OPENINGS ARE HEXAGONAL)				
47-20000	0.068(1.73)	0.213(5.41)	0.255(6.48)	-	-
47-20004	0.068(1.73)	0.128(3.25)	0.178(4.52)	-	-
47-20008	0.151(3.83)	0.178(4.52)	0.213(5.41)	-	-
47-20003	0.080(2.03)	0.100(2.54)	0.429(10.90)	-	-
47-20029	0.100(2.54)	0.429(10.90)	0.213(5.41)	-	-
47-20001	0.042(1.07)	0.068(1.73)	0.255(6.48)	0.324(8.23)	-
47-20002	0.042(1.07)	0.068(1.73)	0.178(4.52)	0.213(5.40)	-
47-20245	0.042(1.07)	0.068(1.73)	0.190(4.82)	0.213(5.40)	-
47-20026	0.255(6.48)	0.320(8.13)	0.350(8.88)	-	-
47-20025	0.052(1.32)	0.068(1.73)	0.100(2.54)	0.213(5.41)	0.255(6.48)
47-20024	0.178(4.52)	0.324(8.23)	0.068(1.73)	-	-
47-20027	0.116(2.95)	0.429(10.90)	-	-	-
47-20028	0.178(4.52)	0.255(6.48)	0.052(1.32)	0.068(1.73)	-
47-20030	0.042(1.07)	0.068(1.73)	0.255(6.48)	0.278(7.08)	-
47-20247	0.106(2.70)	0.114(2.90)	0.130(3.30)	-	-
47-20249	0.068(1.73)	0.100(2.54)	0.429(10.90)	-	-
47-20250	0.042(1.07)	0.068(1.73)	0.128(3.25)	0.178(4.52)	-
47-20251	0.052(1.32)	0.263(6.68)	-	-	-
47-20252	0.052(1.32)	0.278(7.06)	-	-	-
47-20253	0.042 (1.07) SQ.	0.068(1.73)	0.178(4.52)	0.278(7.06)	0.255(6.48)
47-20254	0.178(4.52)	0.187(4.75)	0.042(1.07)	-	-
-	0.324(8.23)	0.319(8.10)	0.255(6.48)	0.042(1.07)	-
47-20255	0.052(1.32)	0.068(1.73)	0.255(6.48)	0.324(8.23)	-
47-20256	0.429(10.90)	0.075(1.90)	0.075(1.90)	-	-
47-20257	0.105(2.67)	0.128(3.25)	0.151(3.84)	-	-



**CUSTOMER OUTLINE DRAWING**  
ALL OTHER SHEETS ARE FOR INTERNAL USE ONLY

UNLESS OTHERWISE SPECIFIED, DIMENSIONS ARE IN METRIC AND TOLERANCES ARE:  
 <0.5mm ±0.05mm    0.5 - 6mm ±0.1mm    6 - 30mm ±0.2mm    30 - 120mm ±0.3mm    ANGLES ±1°

NOTICE - These drawings, specifications, or other data (1) are, and remain the property of Amphenol corp. (2) must be returned upon request; and (3) are confidential and not to be disclosed to any person other than those to whom they are given by Amphenol Corp. the furnishing of these drawings, specifications, or other data by Amphenol Corp., or to any other person to anyone for any purpose is not to be regarded by implication or otherwise in any manner licensing, granting rights to permitting such holder or any other person to manufacture, use or sell any product, process or design, patented or otherwise, that may in any way be related to or disclosed by said drawings, specifications, or other data.

MATERIAL	DRAWN CLEMENT	DATE 12-Dec-14
REFERENCE EAR # 6228	ENGINEER B.C. GLEISSNER	DATE 12-Dec-14
CONFIGURATION LEVEL: In Work	APPROVED B.C. GLEISSNER	DATE 18-Dec-14
FINISH	CAD FILE	

TITLE DIE SETS	SCALE: NTS	SHEET 2 OF 2
DWG SIZE B	REV A	

DRAWING NO. 47-2XXXX	
ITEM NO. 47-2XXXX	
PART NO. 47-2XXXX	

Amphenol RF	
www.amphenolrf.com	
DRAWING NO. 47-2XXXX	
ITEM NO. 47-2XXXX	
PART NO. 47-2XXXX	