



Chipsmall Limited consists of a professional team with an average of over 10 year of expertise in the distribution of electronic components. Based in Hongkong, we have already established firm and mutual-benefit business relationships with customers from,Europe,America and south Asia,supplying obsolete and hard-to-find components to meet their specific needs.

With the principle of "Quality Parts,Customers Priority,Honest Operation,and Considerate Service",our business mainly focus on the distribution of electronic components. Line cards we deal with include Microchip,ALPS,ROHM,Xilinx,Pulse,ON,Everlight and Freescale. Main products comprise IC,Modules,Potentiometer,IC Socket,Relay,Connector.Our parts cover such applications as commercial,industrial, and automotives areas.

We are looking forward to setting up business relationship with you and hope to provide you with the best service and solution. Let us make a better world for our industry!



Contact us

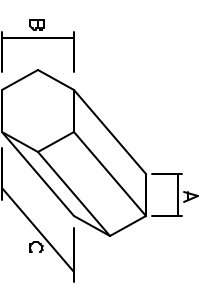
Tel: +86-755-8981 8866 Fax: +86-755-8427 6832

Email & Skype: info@chipsmall.com Web: www.chipsmall.com

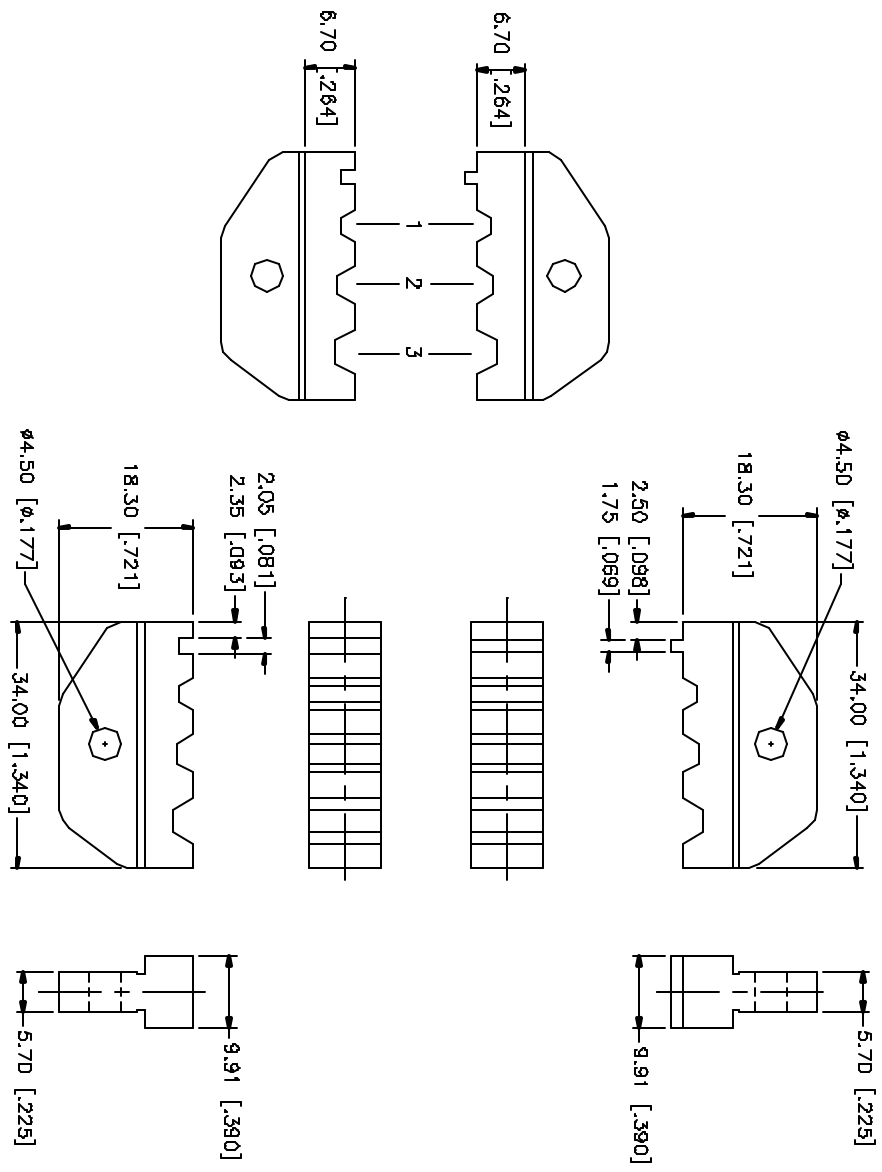
Address: A1208, Overseas Decoration Building, #122 Zhenhua RD., Futian, Shenzhen, China



REV.	DATE	DESCRIPTION
A	08/31/04	UPDATE DRAWING FORMAT



	A	B	C
1	2.21 [.087]	3.83 [.151]	9.91 [.390]
2	2.61 [.103]	4.52 [.178]	9.91 [.390]
3	3.12 [.123]	5.41 [.213]	9.91 [.390]
4			



REV	DATE	DESCRIPTION
8		
7		
6		
5		
4		
3		
2		
1		

DESCRIPTION	MATERIAL	FINISH	QTY
DIE BODY	CAST STEEL	BLK. OXIDE	

UNLESS OTHERWISE SPECIFIED DIMENSIONS ARE IN MILLIMETERS, DIMENSIONS IN [] ARE IN INCHES AND FOR QUANTITY REFERENCES ONLY.	UNLESS OTHERWISE SPECIFIED DIMENSIONS ARE IN MILLIMETERS.
UNLESS OTHERWISE SPECIFIED DIMENSIONS FOR HOLE DIA.	UNLESS OTHERWISE SPECIFIED DIMENSIONS FOR HOLE DIA.
0.5 - 1.0mm ± 0.20mm	0.5 - 1.0mm ± 0.20mm
1.0 - 3.0mm ± 0.40mm	1.0 - 3.0mm ± 0.40mm
3.0 - 12.0mm ± 0.50mm	3.0 - 12.0mm ± 0.50mm
UNLESS OTHERWISE SPECIFIED DIMENSIONS FOR HOLE DIA.	
.020 - .315 ± 0.007	
.315 - 1.180 ± 0.013	
1.180 - 4.724 ± 0.025	

APPROVALS	DATE
G.R.S.	08/31/04

CAD FILE	PART NO.
C:/MISC/47-20008.DWG	47-20008

DRWG. NO.	REV.	SIZE	SCALE
47-20008.DWG	A	A	NA

Amphenol Connex

CRIMP DIE SET