



Chipsmall Limited consists of a professional team with an average of over 10 year of expertise in the distribution of electronic components. Based in Hongkong, we have already established firm and mutual-benefit business relationships with customers from,Europe,America and south Asia,supplying obsolete and hard-to-find components to meet their specific needs.

With the principle of “Quality Parts,Customers Priority,Honest Operation,and Considerate Service”,our business mainly focus on the distribution of electronic components. Line cards we deal with include Microchip,ALPS,ROHM,Xilinx,Pulse,ON,Everlight and Freescale. Main products comprise IC,Modules,Potentiometer,IC Socket,Relay,Connector.Our parts cover such applications as commercial,industrial, and automotives areas.

We are looking forward to setting up business relationship with you and hope to provide you with the best service and solution. Let us make a better world for our industry!



## Contact us

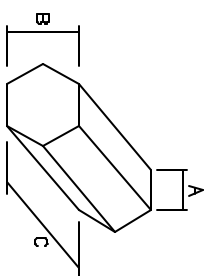
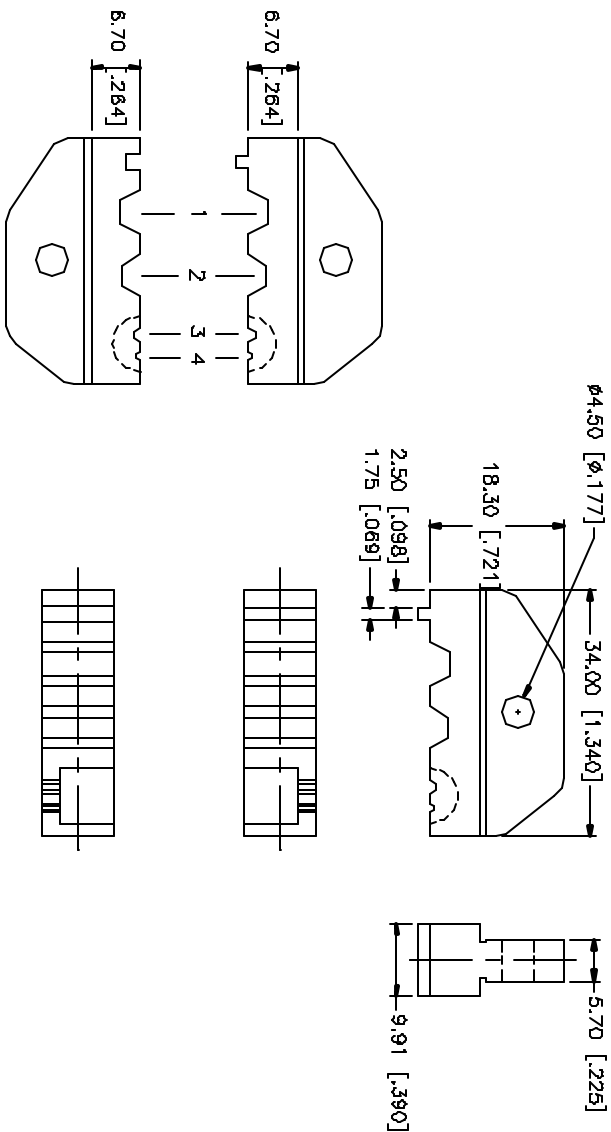
Tel: +86-755-8981 8866 Fax: +86-755-8427 6832

Email & Skype: info@chipsmall.com Web: www.chipsmall.com

Address: A1208, Overseas Decoration Building, #122 Zhenhua RD., Futian, Shenzhen, China



REV.	DATE	DESCRIPTION
A	08/31/04	UPDATE DRAWING FORMAT



	A	B	C
1	3.12 [.123]	5.40 [.213]	9.91 [.390]
2	2.78 [.110]	4.82 [.190]	9.91 [.390]
3	.990 [.039]	1.72 [.068]	2.54 [.100]
4	.820 [.024]	1.07 [.042]	2.54 [.100]

8												
7												
6												
5												
4												
3												
2												
1												
DESCRIPTION	MATERIAL	FINISH	QTY	USING DIMENSIONED DIMENSIONS AND INDICES IN RELATIVE POSITIONS IN [ ] ARE IN INCHES AND THE DISTANCE BETWEEN DIMS. USING DIMENSIONED DIMENSIONS AND INDICES IN [ ] ARE IN MILLIMETERS. DIMENSIONS FOR MATERIALS: 0.5 - 8mm ± 0.20mm 8 - 30mm ± 0.40mm 30 - 120mm ± 0.50mm USING DIMENSIONED DIMENSIONS AND INDICES FOR MATERIALS: .020 - .315 = ± 0.012" .315 - 1.180 = ± 0.012" 1.180 - 4.724 = ± 0.020" DO NOT SCALE DRAWING		APPROVALS DRAWN Q.R.S. CHECKED BILLED SHEET 1 OF 1	DATE 08/31/04	PART DESCRIPTION GRIMP DIE SET	DWG. NO. 47-20245.DWG	REV. A	SIZE A	SCALE NA

**Amphenol Connex**