



Chipsmall Limited consists of a professional team with an average of over 10 year of expertise in the distribution of electronic components. Based in Hongkong, we have already established firm and mutual-benefit business relationships with customers from,Europe,America and south Asia,supplying obsolete and hard-to-find components to meet their specific needs.

With the principle of “Quality Parts,Customers Priority,Honest Operation,and Considerate Service”,our business mainly focus on the distribution of electronic components. Line cards we deal with include Microchip,ALPS,ROHM,Xilinx,Pulse,ON,Everlight and Freescale. Main products comprise IC,Modules,Potentiometer,IC Socket,Relay,Connector.Our parts cover such applications as commercial,industrial, and automotives areas.

We are looking forward to setting up business relationship with you and hope to provide you with the best service and solution. Let us make a better world for our industry!



## Contact us

Tel: +86-755-8981 8866 Fax: +86-755-8427 6832

Email & Skype: info@chipsmall.com Web: www.chipsmall.com

Address: A1208, Overseas Decoration Building, #122 Zhenhua RD., Futian, Shenzhen, China



10 9 8 7 6 5 4 3 2 1

F

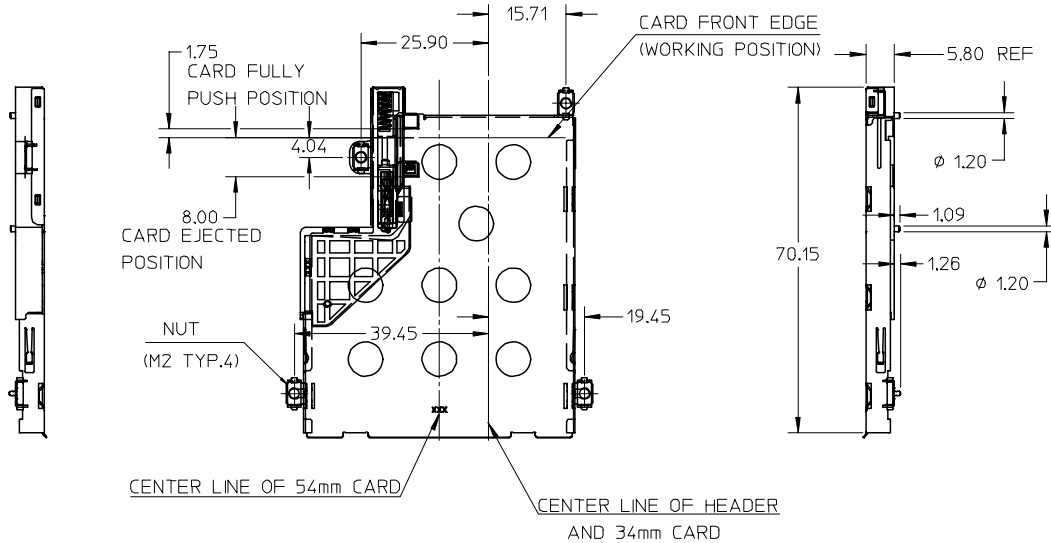
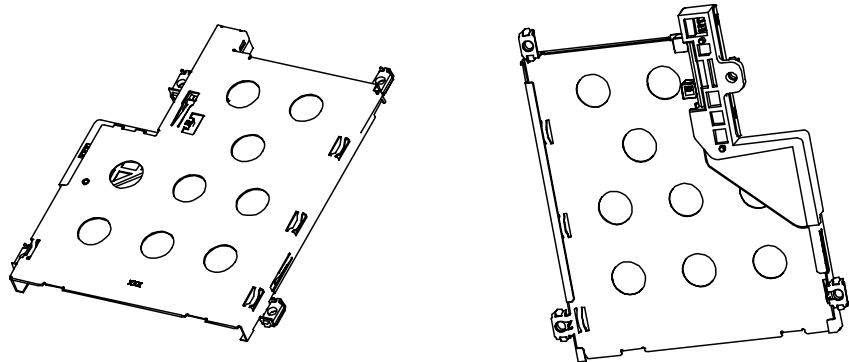
E

D

C

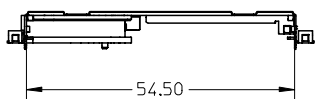
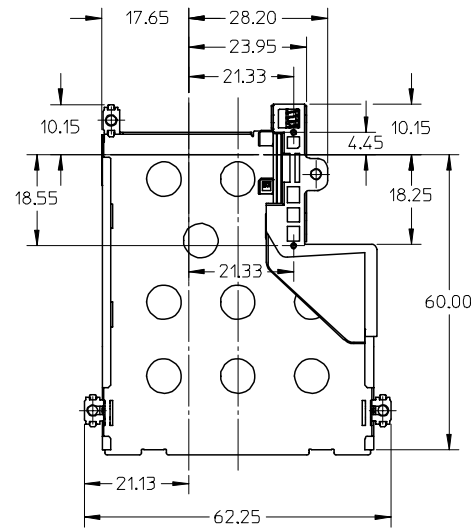
B

A



NOTES:

1. SLOT DESIGN BASED ON EXPRESS CARD ASSOC. REV:A;
2. THIS SLOT TO BE COMPATIBLE BOTH 34mm CARD AND 54mm CARD;
3. THE EJECTOR MECHANISM TO BE ASSEMBLED BASES ON 34mm CARD CENTER LINE;
4. WHEN DELIVERING, THE CAM SLIDER MUST KEEP RELEASE STATUS; (CARD EJECTED OUT POSITION);
5. APPLIABLE HEADER PLEASE REFER TO SHEET 2
6. MATERIAL:  
 SHELL: STAINLESS STEEL  
 STAND OFF: STAINLESS STEEL  
 NUT: STAINLESS STEEL  
 COIL SPRING: STEEL WIRE  
 CAM SLIDER: HIGH TEMPERATURE THERMOPLASTIC  
 CAM SLIDER HOUSING: HIGH TEMPERATURE THERMOPLASTIC  
 CAM PIN: STAINLESS STEEL
7. PRODUCT SPECIFICATION PLEASE REFER TO PS-47202-001.



NEW RELEASE EC NO: SH2005-0413 DRWN: LBAO CHKD: 2005/07/01 APPR: YTYAP 2005/07/01 2005/07/01 2005/07/01	QUALITY SYMBOLS	GENERAL TOLERANCES (UNLESS SPECIFIED)	DIMENSION STYLE	SCALE	DESIGN UNITS	THIRD ANGLE PROJECTION
	$\nabla=0$ $\sphericalangle=0$	mm INCH 4 PLACES ± --- ± --- 3 PLACES ± --- ± --- 2 PLACES ± 0.2 ± --- 1 PLACE ± 0.3 ± --- ANGULAR ± 2 °	MM ONLY	1:1	METRIC	
	DESCRIPTION	DRAFT WHERE APPLICABLE MUST REMAIN WITHIN DIMENSIONS	DRAWN BY	DATE	TITLE	
	REV		APPROVED BY	DATE	EXPRESS CARD BOTTOM MOUNT PUSH-PUSH TYPE	
			MATERIAL NO.	DOCUMENT NO.	MOLEX INCORPORATED	
			47202-0003	SD-47202-001	SHEET NO. 1 OF 4	
			THIS DRAWING CONTAINS INFORMATION THAT IS PROPRIETARY TO MOLEX INCORPORATED AND SHOULD NOT BE USED WITHOUT WRITTEN PERMISSION			

9 8 7 6 5 4 3 2 1

10 9 8 7 6 5 4 3 2 1

F

E

D

C

B

A

F

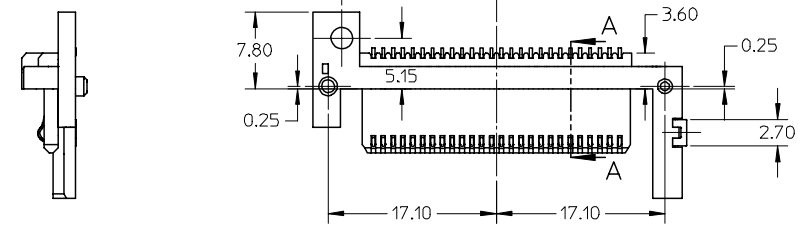
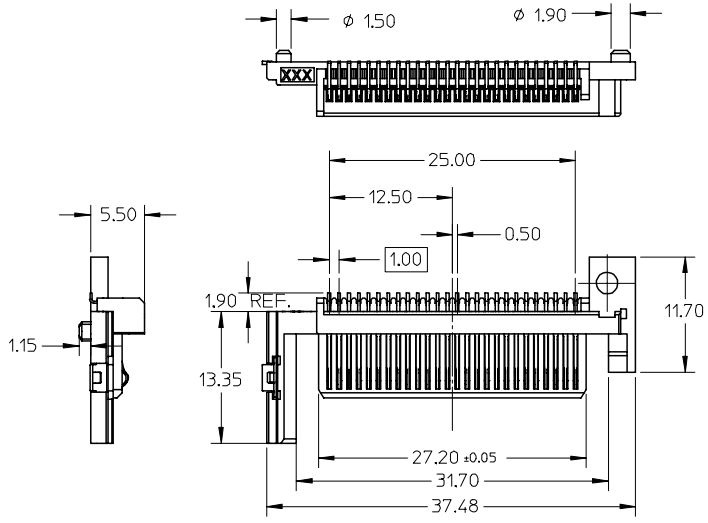
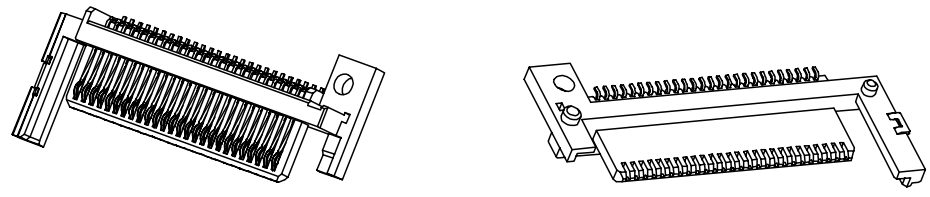
E

D

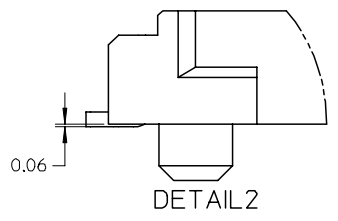
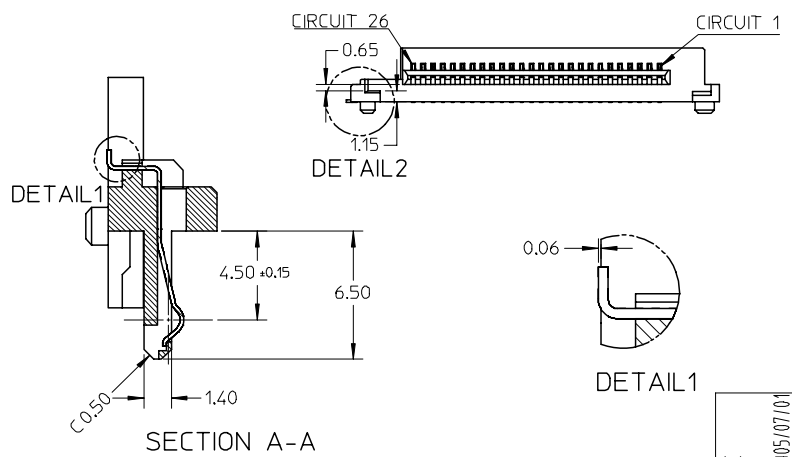
C

B

A



- NOTES:
- MATERIAL:
    - HOUSING: HIGH TEMPERATURE THERMOPLASTIC,
    - FITTING NAIL: COPPER ALLOY,
    - TERMINAL: COPPER ALLOY,
  - FINISH:
    - TERMINAL:
      - UNDERPLATING: Ni OVERALL,
      - SELECTIVE GOLD ON CONTACT AREA,
      - THICKNESS: 15 MICROINCH MINIMUM,
      - SELECTIVE PURE TIN ON SOLDER TAIL AREA,
      - THICKNESS: 40~100 MICROINCH,
  - COPLANARITY AT SOLDER TAIL TO BE 0.10 MAXIMUM,
  - APPLICABLE CARD SLOT PLEASE REFER TO SHEET 1
  - PRODUCT SPECIFICATION PLEASE REFER TO PS-47202-001



NEW RELEASE EC NO: SH2005-0413 DRWN: LBAO CHKD: APPR: YTYAP	2005/07/01 2005/07/01 2005/07/01	QUALITY SYMBOLS	GENERAL TOLERANCES (UNLESS SPECIFIED)		DIMENSION STYLE	SCALE	DESIGN UNITS	THIRD ANGLE PROJECTION			
		$\nabla=0$ $\sphericalangle=0$	mm	INCH	MM ONLY	2:1	METRIC				
			4 PLACES	± ---	± ---	DRAWN BY	DATE	TITLE			
			3 PLACES	± ---	± ---	R. BIAN	2004/12/14	EXPRESS CARD BOTTOM MOUNT PUSH-PUSH TYPE			
	2 PLACES	± 0.2	± ---	CHECKED BY	DATE	MOLEX INCORPORATED					
	1 PLACE	± 0.3	± ---	APPROVED BY	DATE	SHEET NO. 2 OF 4					
	ANGULAR ± 2 °		DRAFT WHERE APPLICABLE MUST REMAIN WITHIN DIMENSIONS		MATERIAL NO.	DOCUMENT NO.					
				SIZE	47202-0002	SD-47202-001					
				THIS DRAWING CONTAINS INFORMATION THAT IS PROPRIETARY TO MOLEX INCORPORATED AND SHOULD NOT BE USED WITHOUT WRITTEN PERMISSION							

9 8 7 6 5 4 3 2 1

10 9 8 7 6 5 4 3 2 1

F

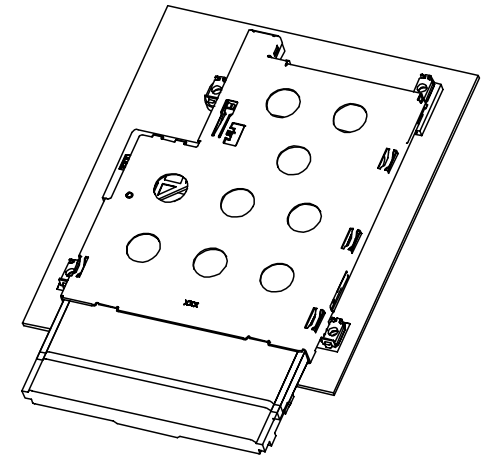
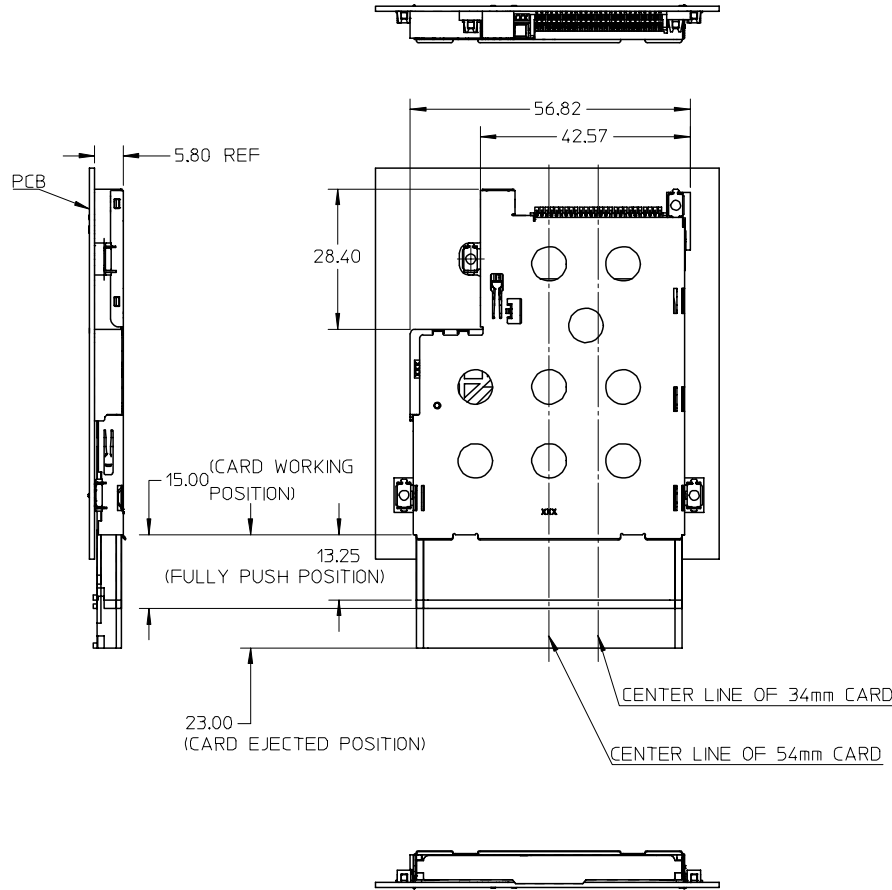
E

D

C

B

A

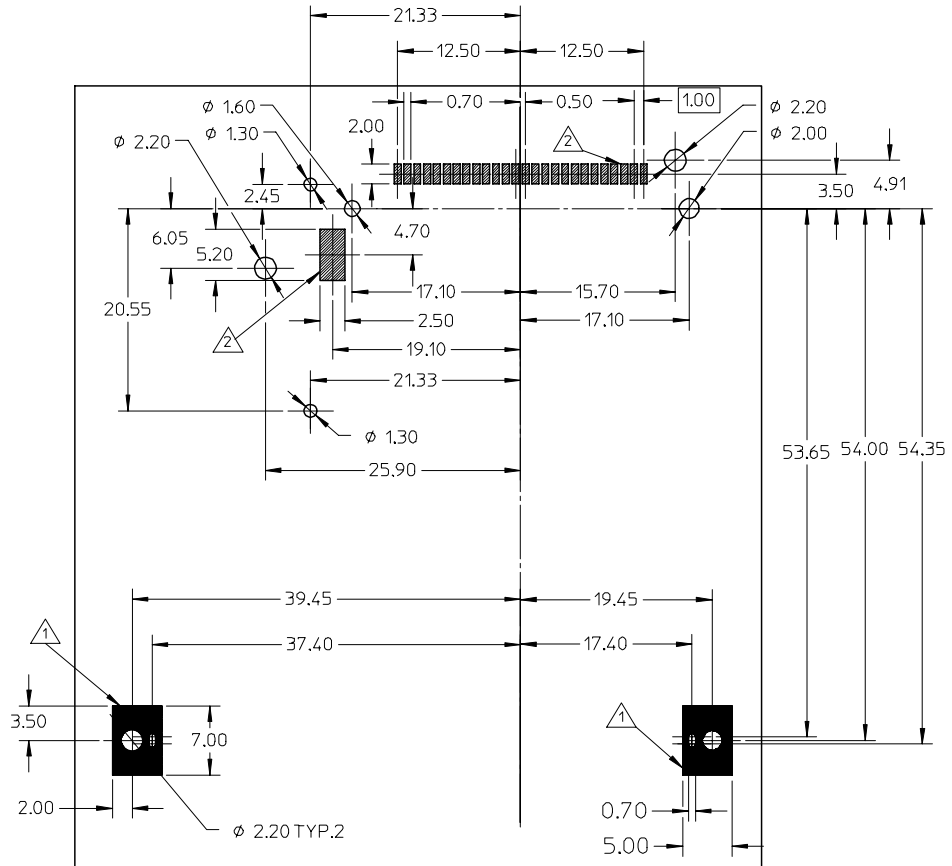


NOTES:

1. COMPONENTS:  
 HEADER: SHEET 2  
 EJECTOR: SHEET 1
2. PCB LAYOUT PLEASE REFER TO SHEET 4;
3. TAIL COMPLANARITY OF HEADER TO BE 0.10 MAXIMUM;  
 TRUE POSITION IS 0.15 MAXIMUM BETWEEN SOLDER TAILS;
4. NON REFLOW PROCESS FOR CARD SLOT.
5. SCREW FASTENING TORQUE: 2.0 KGF-CM;
6. PRODUCT SPECIFICATION PLEASE REFER TO PS-47202-001.

NEW RELEASE EC NO: SH2005-0413 DRWN: LBAO CHKD: APPR: YIYAP	2005/07/01 2005/07/01 2005/07/01	DESCRIPTION REV	QUALITY SYMBOLS	GENERAL TOLERANCES (UNLESS SPECIFIED)	DIMENSION STYLE	SCALE	DESIGN UNITS	THIRD ANGLE PROJECTION		
			$\nabla=0$ $\sphericalangle=0$	mm    INCH 4 PLACES ± --- ± --- 3 PLACES ± --- ± --- 2 PLACES ± 0.2 ± --- 1 PLACE ± 0.3 ± --- ANGULAR ± 2 °	MM ONLY	1:1	METRIC	DRAWN BY: R. BIAN DATE: 2004/12/14 CHECKED BY: _____ DATE: _____ APPROVED BY: _____ DATE: _____	TITLE	EXPRESS CARD BOTTOM MOUNT PUSH-PUSH TYPE
				DRAFT WHERE APPLICABLE MUST REMAIN WITHIN DIMENSIONS	MATERIAL NO.	DOCUMENT NO.	SHEET NO.	MOLEX INCORPORATED 47202-0001    SD-47202-001    3 OF 4		
				SIZE	THIS DRAWING CONTAINS INFORMATION THAT IS PROPRIETARY TO MOLEX INCORPORATED AND SHOULD NOT BE USED WITHOUT WRITTEN PERMISSION					

9 8 7 6 5 4 3 2 1



NOTES:  
 1. [Symbol] GROUNDING PAD AREA  
 2. [Symbol] SOLDER PAD AREA

RECOMMENDED PCB LAYOUT, COMPONENT SIDE

NEW RELEASE EC NO: SH2005-0413 DRWN: LBAO CHKD: APPR: YIYAP 2005/07/01	QUALITY SYMBOLS	GENERAL TOLERANCES (UNLESS SPECIFIED)	DIMENSION STYLE	SCALE	DESIGN UNITS	THIRD ANGLE PROJECTION															
	$\nabla=0$ $\sphericalangle=0$	<table border="1"> <thead> <tr> <th></th> <th>mm</th> <th>INCH</th> </tr> </thead> <tbody> <tr> <td>4 PLACES</td> <td>± ---</td> <td>± ---</td> </tr> <tr> <td>3 PLACES</td> <td>± ---</td> <td>± ---</td> </tr> <tr> <td>2 PLACES</td> <td>± 0.05</td> <td>± ---</td> </tr> <tr> <td>1 PLACE</td> <td>±</td> <td>± ---</td> </tr> </tbody> </table>		mm	INCH	4 PLACES	± ---	± ---	3 PLACES	± ---	± ---	2 PLACES	± 0.05	± ---	1 PLACE	±	± ---	MM ONLY	2:1	METRIC	
		mm	INCH																		
	4 PLACES	± ---	± ---																		
3 PLACES	± ---	± ---																			
2 PLACES	± 0.05	± ---																			
1 PLACE	±	± ---																			
DRAFT WHERE APPLICABLE MUST REMAIN WITHIN DIMENSIONS	<table border="1"> <tr> <td>DRAWN BY</td> <td>DATE</td> <td>TITLE</td> </tr> <tr> <td>R. BIAN</td> <td>2004/12/14</td> <td>EXPRESS CARD BOTTOM MOUNT PUSH-PUSH TYPE</td> </tr> <tr> <td>CHECKED BY</td> <td>DATE</td> <td></td> </tr> <tr> <td>APPROVED BY</td> <td>DATE</td> <td></td> </tr> </table>	DRAWN BY	DATE	TITLE	R. BIAN	2004/12/14	EXPRESS CARD BOTTOM MOUNT PUSH-PUSH TYPE	CHECKED BY	DATE		APPROVED BY	DATE		MOLEX INCORPORATED							
DRAWN BY	DATE	TITLE																			
R. BIAN	2004/12/14	EXPRESS CARD BOTTOM MOUNT PUSH-PUSH TYPE																			
CHECKED BY	DATE																				
APPROVED BY	DATE																				
A	REV	MATERIAL NO.	DOCUMENT NO.	SHEET NO.																	
		47202-0001	SD-47202-001	4 OF 4																	
THIS DRAWING CONTAINS INFORMATION THAT IS PROPRIETARY TO MOLEX INCORPORATED AND SHOULD NOT BE USED WITHOUT WRITTEN PERMISSION																					