



Chipsmall Limited consists of a professional team with an average of over 10 year of expertise in the distribution of electronic components. Based in Hongkong, we have already established firm and mutual-benefit business relationships with customers from,Europe,America and south Asia,supplying obsolete and hard-to-find components to meet their specific needs.

With the principle of “Quality Parts,Customers Priority,Honest Operation,and Considerate Service”,our business mainly focus on the distribution of electronic components. Line cards we deal with include Microchip,ALPS,ROHM,Xilinx,Pulse,ON,Everlight and Freescale. Main products comprise IC,Modules,Potentiometer,IC Socket,Relay,Connector.Our parts cover such applications as commercial,industrial, and automotives areas.

We are looking forward to setting up business relationship with you and hope to provide you with the best service and solution. Let us make a better world for our industry!



Contact us

Tel: +86-755-8981 8866 Fax: +86-755-8427 6832

Email & Skype: info@chipsmall.com Web: www.chipsmall.com

Address: A1208, Overseas Decoration Building, #122 Zhenhua RD., Futian, Shenzhen, China



Dimmable LED Magnetic Transformers from Inspired LED

Transformers are available in 40, 60 and 100 Watt Versions

Transformer

The actual transformer is encapsulated in the enclosure. Input leads are 20 AWG. Output leads are 16 AWG. Lead insulation is 105 °C.

Enclosure

Enclosure temperature will not exceed 70 °C @ 40 °C ambient. Wiring compartment has 2 knockouts sized for 3/4 inch screw cable connectors. The removable cover for the wiring compartment is secured in place by a screw. The enclosure is black powder coated.

General

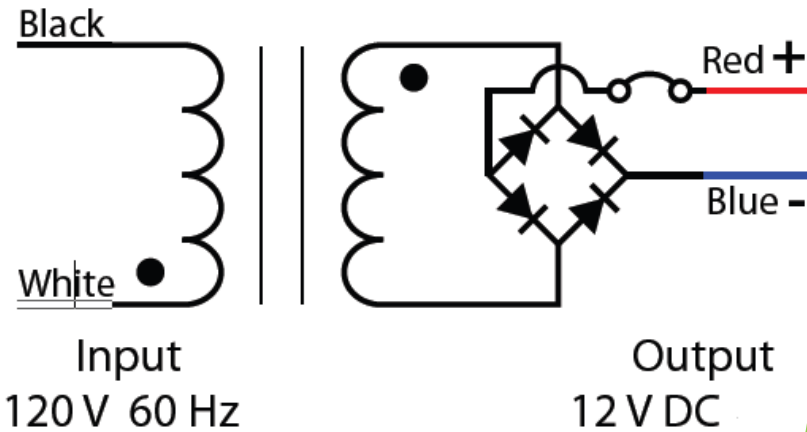
- Manual reset thermal circuit breaker on the secondary side.
- Controlled with a low-voltage dimmer.
- ETL listed
- CSA listed
- UL standard 5085-1

Note; Dimmable Transformers require a Magnetic Low Voltage Wall Dimmer for proper operation. Here is the list of approved Dimmers Inspired LED recommends **DVLV-600** for Diva paddle style and AYLV-600 standard toggle style switches.

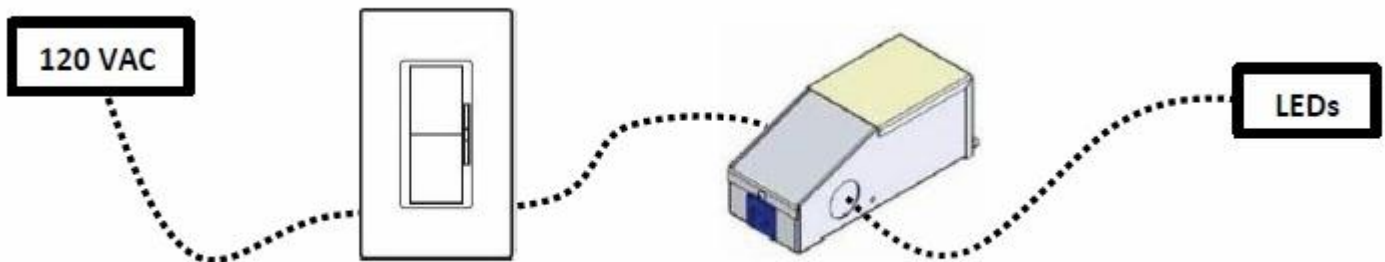
CAUTION

Triac or LED Dimmers will damage Transformer

Lutron Ariadni Dimmer		
AYLV-603P	AYLV-603P-CSA	AYLV-603P-S
AYLV-600P	AYLV-600P-CSA	AYLV-600P-S
Lutron Vareo Dimmer		
V-1000	V-600	V-1000-S
V-600-S	VETN-1000	VETS-1000
VETS-1000-CSA	VETN-1000-S	VETS-1000-S
VETS-R	VETS-R-S	VETS-1000-SL
VETS-1000-SL-S	VETS-A-SL	VETS-A-SL-S
Lutron Nova Dimmer		
NTLV-1000	NTLV-1500	NTLV-600
NTLV-1500-S	NTLV-600-S	NTLV-1000-S
NTLV-1503P	NTLV-2003P	NTLV-1003P
NTLV-603P	NTLV-1503P-CSA	NTLV-1003P-CSA
NTLV-603P-CSA	NTLV-1503P-S	NTLV-2003P-S
NTLV-1003P-S	NTLV-603P-S	NT-3PS
NT-3PS-CSA	NT-3PS-S	NT-4PS
NT-4PS-CSA	NT-4PS-S	NT-1PS
NT-1PS-CSA	NT-1PS-S	
Lutron Ceana Dimmer		
CNLV-603P	CNLV-600P	
Lutron Diva Dimmer		
DVLV-103P	DVLV-603P	DVSCLV-103P
DVSCLV-603P	DVLV-103P-CSA	DVLV-603P-CSA
DVLV-103P-S	DVLV-603P-S	DVLV-103PH-S
DVLV-603PH-S	DVSCLV-103P-L	DVSCLV-603P-L
DVLV-600P	DVLV-10P	DVSCLV-10P
DVSCLV-600P	DVLV-10P-CSA	DVLV-10P-S
DVLV-10PH-S	DVSCLV-10P-L	SC-3PS
SC-3PS	SC-4PS	SC-4PS
SC-1PS	SC-1PS	SC-3PSNL
SC-4PSNL	SC-1PSNL	
Lutron Glyder Dimmer		
GLV-600	GLV-600-CSA	
Lutron Lyneo Dimmer		
LXLV-103PL	LXLV-603PL	LXLV-10PL
LXLV-600PL		
Lutron Nova T Dimmer		
NTLV-1500	NTLV-1000	NTLV-1000-277
NTLV-600	NTLV-600-277	
Lutron Skylark Dimmer		
SLV-603P	SLV-603P-CSA	SLV-603PH-CSA
SLV-600P	SLV-600P-CSA	SLV-600PH-CSA

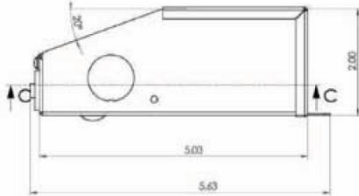
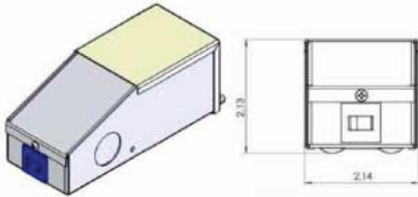


Available (in white)
from Inspired LED



Dimmable LED Magnetic Transformer Specifications

12VDC 40Watt Item 4789

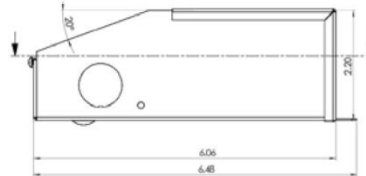
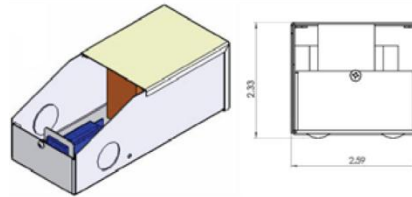


Dimensions in Inches:

Height	Width	Depth
5.03"	2.14"	2.00"

Max Load	40 W
Input Voltage	120 V 60 Hz
Output Voltage Full Load	11.4 V
Input Current Full Load	360 mA
Open Circuit Volts	12.5 VDC
Output Current Full Load	3.19 A
Efficiency	87.50%
Coil Former	Double Section Bobbin
Thermal Class	B 130 °C
Leads Primary	PVC 600 V #20
Leads Secondary	PVC 300 V #16

12VDC 60Watt Item 4790

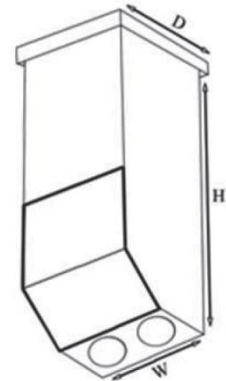


Dimensions in Inches:

Height	Width	Depth
6.06"	2.59"	2.20"

Maximum Load	60 W
Input Voltage	120 V 60 Hz
Output Voltage Full Load	11.5 VDC
Input Current Full Load	540 mA
Open Circuit Volts	12.5 VDC
Output Current Full Load	4.8 A
Efficiency	89.20%
Coil Former	Double Section Bobbin
Thermal Class	B 130 °C
Leads Primary	PVC 600 V #20
Leads Secondary	PVC 300 V #14

12VDC 100Watt Item 4791



Dimensions in Inches:

Height	Width	Depth
9.17"	3.06"	2.94"

Max Load	100 W
Input Voltage	120 V 60 Hz
Output Voltage Full Load	11.57 VDC
Input Current Full Load	898 mA
Open Circuit Volts	12.5 VDC
Output Current Full Load	8.05 A
Efficiency	87.20%
Coil Former	Double Section Bobbin
Thermal Class	B 130 °C
Leads Primary	PVC 600 V #18
Leads Secondary	PVC 300 V #12

Additional Mounting Option

Route the AC Wires from the transformer through the rigid spacer to the Open Box Extender. This will give you more room to tie Transformer and Dimmer wires together.

