



Chipsmall Limited consists of a professional team with an average of over 10 year of expertise in the distribution of electronic components. Based in Hongkong, we have already established firm and mutual-benefit business relationships with customers from,Europe,America and south Asia,supplying obsolete and hard-to-find components to meet their specific needs.

With the principle of "Quality Parts,Customers Priority,Honest Operation,and Considerate Service",our business mainly focus on the distribution of electronic components. Line cards we deal with include Microchip,ALPS,ROHM,Xilinx,Pulse,ON,Everlight and Freescale. Main products comprise IC,Modules,Potentiometer,IC Socket,Relay,Connector.Our parts cover such applications as commercial,industrial, and automotives areas.

We are looking forward to setting up business relationship with you and hope to provide you with the best service and solution. Let us make a better world for our industry!



Contact us

Tel: +86-755-8981 8866 Fax: +86-755-8427 6832

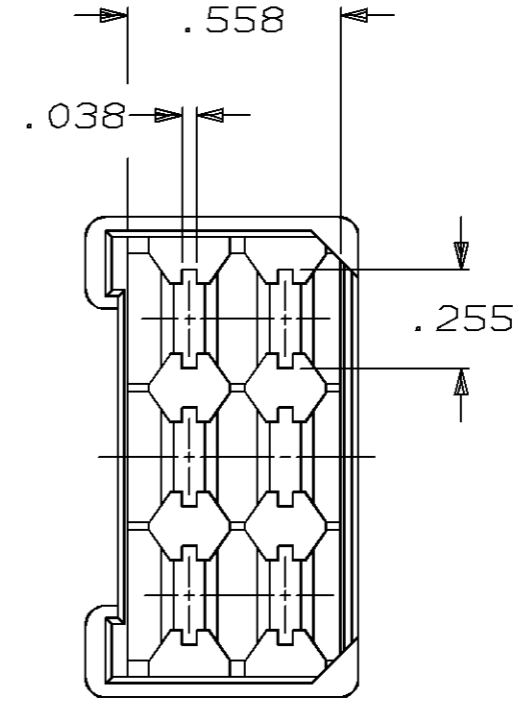
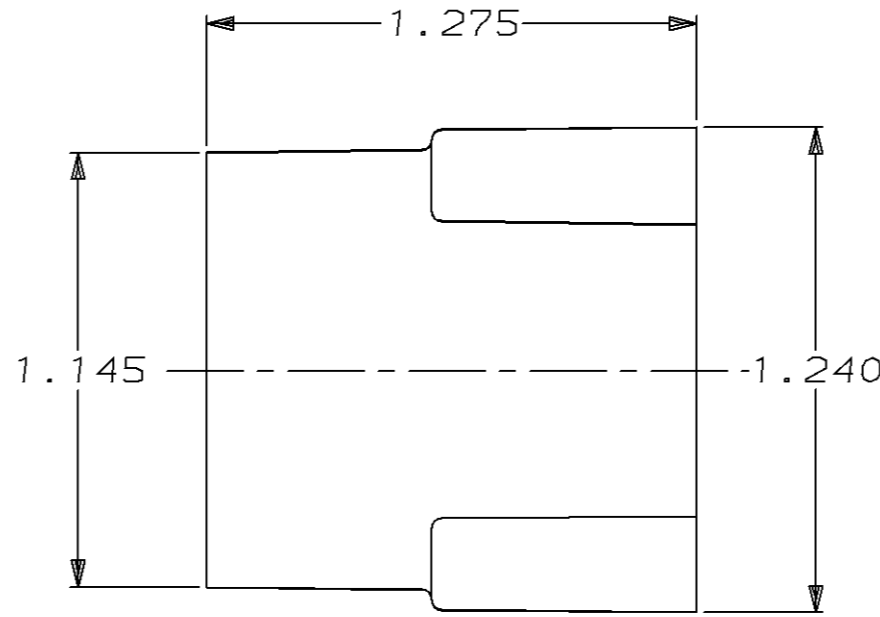
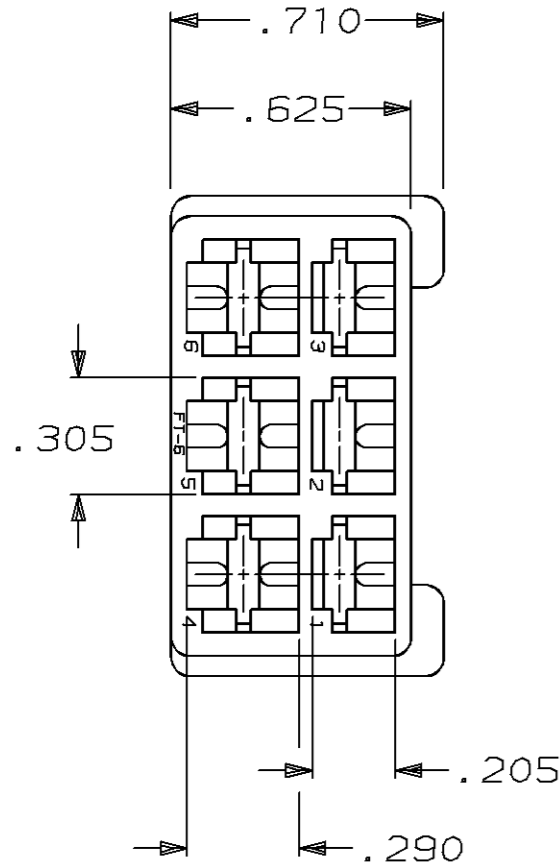
Email & Skype: info@chipsmall.com Web: www.chipsmall.com

Address: A1208, Overseas Decoration Building, #122 Zhenhua RD., Futian, Shenzhen, China



THIS DRAWING IS UNPUBLISHED. RELEASED FOR PUBLICATION, 19 .
 © COPYRIGHT 19 BY AMP INCORPORATED. ALL INTERNATIONAL RIGHTS RESERVED.

LOC	DIST	P	F	REVISIONS				
AF	50			ZONE	LTR	DESCRIPTION	DATE	APPD
					AB	OBS -7 PER 0L10-0086-96	10/1/96	JR/JG



1 HOUSING USED WITH RECPT. HOUSING 480003.
 2 FOR FOREIGN PRODUCTION ONLY.

OBSOLETE	NATURAL	NYLON-VO	480004-9
OBSOLETE	LT. GRAY	CYCOLAC	2 480004-8
OBSOLETE	BLACK	AFCOLENE	2 480004-7
	NATURAL	6/6 NYLON	480004-5
OBSOLETE	CLEAR	TENITE	2 480004-4
OBSOLETE	BLACK	CYCOLAC	2 480004-3

	COLOR	MATERIAL	PART NO
DO NOT SCALE PRINT. UNLESS SPECIFIED DIMENSIONS ARE IN INCHES. TOLERANCES ON: 2 PLC DEC ± - 3 PLC DEC ± .015 ANGLES ± -	DR 2/5/91 JR RUTH CHK 2/5/91 P FORTNEY APPD 2/5/91 C MEYERS APPD 2/5/91 D REINER PRODUCT SPEC -	AMP AMP Incorporated Harrisburg, PA 17105-3608	NAME HOUSING, TAB, FASTIN-FASTON, .250 SERIES
MATERIAL SEE TABLE	APPLICATION SPEC -	SIZE B	CAGE CODE 00779
FINISH SEE TABLE	WEIGHT -	SCALE 2:1	DRAWING NO 480004
			SHEET 1 OF 1