



Chipsmall Limited consists of a professional team with an average of over 10 year of expertise in the distribution of electronic components. Based in Hongkong, we have already established firm and mutual-benefit business relationships with customers from,Europe,America and south Asia,supplying obsolete and hard-to-find components to meet their specific needs.

With the principle of "Quality Parts,Customers Priority,Honest Operation,and Considerate Service",our business mainly focus on the distribution of electronic components. Line cards we deal with include Microchip,ALPS,ROHM,Xilinx,Pulse,ON,Everlight and Freescale. Main products comprise IC,Modules,Potentiometer,IC Socket,Relay,Connector.Our parts cover such applications as commercial,industrial, and automotives areas.

We are looking forward to setting up business relationship with you and hope to provide you with the best service and solution. Let us make a better world for our industry!



Contact us

Tel: +86-755-8981 8866 Fax: +86-755-8427 6832

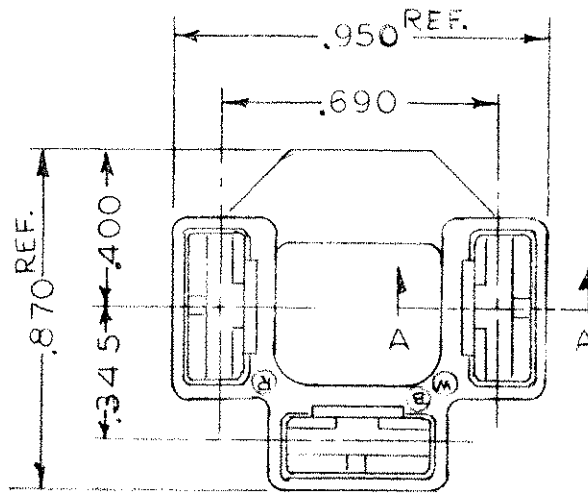
Email & Skype: info@chipsmall.com Web: www.chipsmall.com

Address: A1208, Overseas Decoration Building, #122 Zhenhua RD., Futian, Shenzhen, China

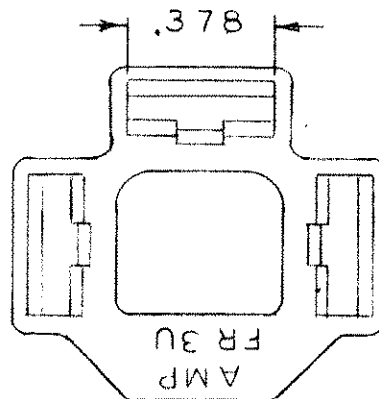
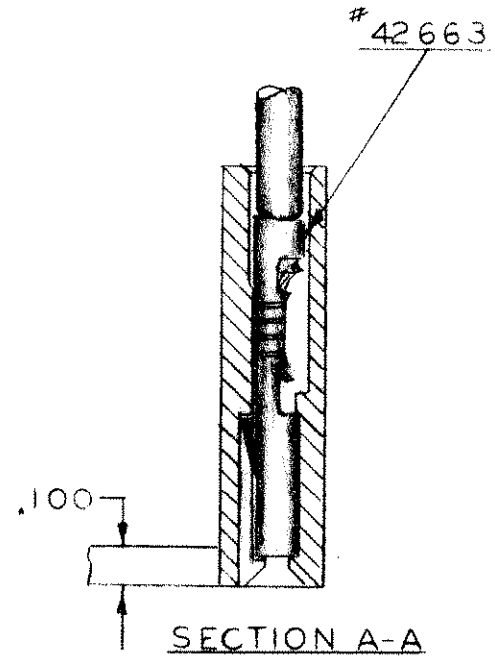
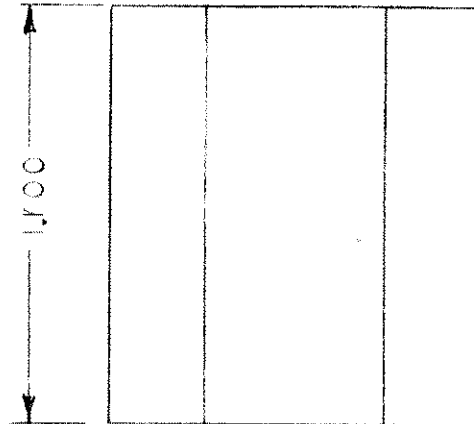


480100

USED ON



HOUSING NO	MATERIAL
480100-1	BLACK - 6/6 NYLON



MATERIAL: SEE TABLE

FINISH: *✓*

© 1958, BY AMP INCORPORATED
AMP PRODUCTS COVERED BY PATENTS
AND/OR PATENTS PENDING.

CUSTOMER DRAWING

AMP INCORPORATED
AUTOMATIC MACHINE DIVISION
HARRISBURG, PENNA.

AF

RECEPTACLE HOUSING
FASTIN-FASTON 3 CIRCUIT

WIRE RANGE

"3/2" SERIES

TOLERANCES: ALL DIMENSIONS ± .015, EXCEPT AS NOTED

NO.	ALTERATION	DATE	BY	E.C.R.
E	REV PER OG-3A-0428-02	8-7-02		MF
D	OGS-2, -3, -4	AF-1706 4/21/80		MF
C	ADD 480100-4	5/24/74		TTI
B	ADD 480100-3	5/23/73		TTI
A	ADDED 480100-2	6-1-73		TTI

DR. D. RUNKLE	3-25-58	D.E. <i>[Signature]</i>	3-26-58
CK. <i>SILLIPLANE</i>	3-26-58	APP. <i>R.E. <i>[Signature]</i></i>	3-26-58

SCALE: 2.5X

480100