



Chipsmall Limited consists of a professional team with an average of over 10 year of expertise in the distribution of electronic components. Based in Hongkong, we have already established firm and mutual-benefit business relationships with customers from,Europe,America and south Asia,supplying obsolete and hard-to-find components to meet their specific needs.

With the principle of “Quality Parts,Customers Priority,Honest Operation,and Considerate Service”,our business mainly focus on the distribution of electronic components. Line cards we deal with include Microchip,ALPS,ROHM,Xilinx,Pulse,ON,Everlight and Freescale. Main products comprise IC,Modules,Potentiometer,IC Socket,Relay,Connector.Our parts cover such applications as commercial,industrial, and automotives areas.

We are looking forward to setting up business relationship with you and hope to provide you with the best service and solution. Let us make a better world for our industry!



Contact us

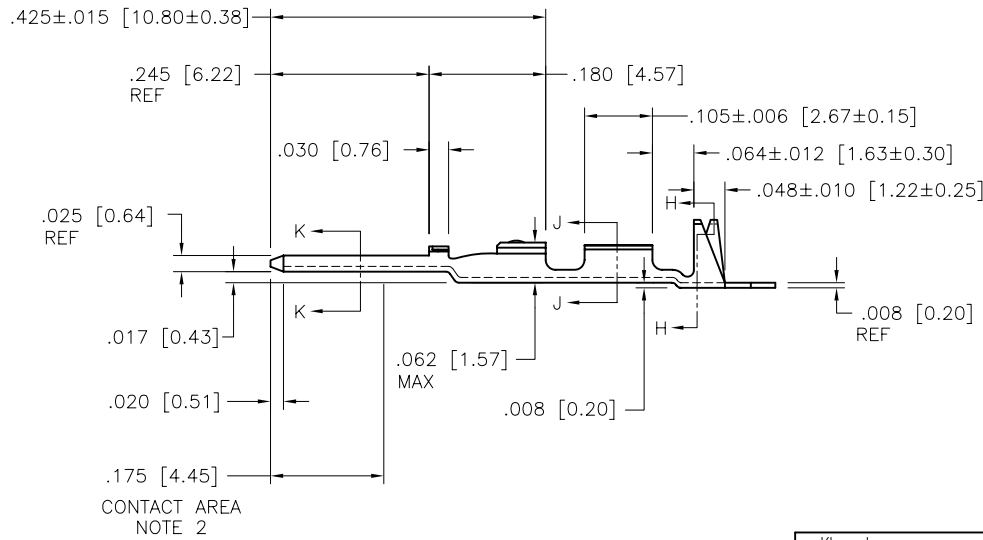
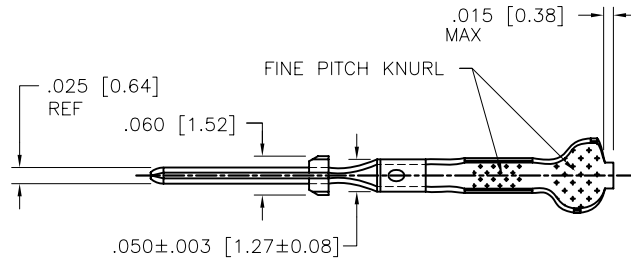
Tel: +86-755-8981 8866 Fax: +86-755-8427 6832

Email & Skype: info@chipsmall.com Web: www.chipsmall.com

Address: A1208, Overseas Decoration Building, #122 Zhenhua RD., Futian, Shenzhen, China



PRODUCT NUMBER
SEE SHEET 2

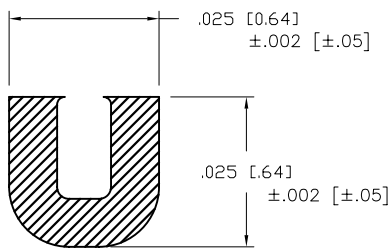
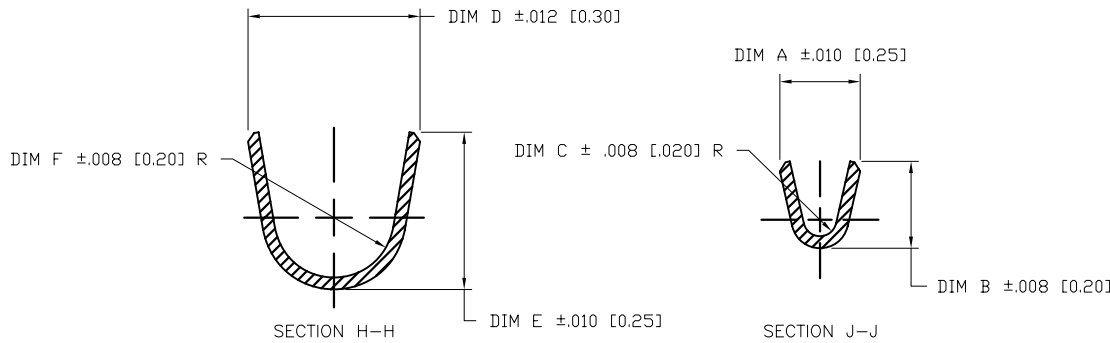


mat'l. code SEE NOTE 1				surface <input checked="" type="checkbox"/> tolerance		projection	product family PV TERMINALS		
ltr	ecr no	dr	date	tolerances unless otherwise specified		 INCH/MM	title		
F	V41701	LSS	1994-11-22	angles	XX +.01/X+3		scale 4:1 	C.T.W. MALE PIN LOOSE PIECE	
G	V05-0254	HTB	2005-03-18	flat	XXX +.005/XX+13	dwg no sheet 1 of 2 size			
H	V06-0583	HTB	2006-06-27	0° ±2'	XXXX +.0020/XXX+.051	48115 A4			
J	V08-0114	HTB	2008-04-01	dr	L. SANDERS 1994-11-28	type CUSTOMER Drawing			
				engr	T. HANNA 1994-11-28				
				chr	T. BREWBAKER 1994-11-28				
				appd	T. HANNA 1994-11-28				
sheet index	revision sheet	J	J						
		1	2						

PRODUCT NUMBER	AWG	DIM A	DIM B	DIM C	DIM D	DIM E	DIM F
48115-000	O B S O L E T E						
48115-000LF	28-32	.054 [1.37]	.058 [1.47]	.011 [0.28]	.115 [2.92]	.105 [2.67]	.040 [1.02]
48116-000	O B S O L E T E						
48116-000LF	22-26	.070 [1.78]	.065 [1.65]	.017 [0.43]	.139 [3.53]	.120 [3.05]	.050 [1.27]
48117-000	O B S O L E T E						
48117-000LF	18-20	.104 [2.64]	.104 [2.64]	.021 [0.53]	.139 [3.53]	.120 [3.05]	.050 [1.27]

NOTES:

- ① MATERIAL: 3/4 HD. BRASS ALLOY 260.
- ② PLATING: ELECTRODEPOSITED GOLD 50u"/1.27u IN CONTACT AREA, REMAINDER GOLD FLASH. UNDERPLATE 50u"/1.27u NICKEL
3. TERMINAL MAY BE USED WITH MINI LATCH HOUSING.
4. APPLICABLE SPECIFICATION:
A. BUS-12-098 PRODUCT SPECIFICATION.
B. TA-211 CRIMP SPECIFICATION.
5. PRODUCT MEETS EUROPEAN UNION DIRECTIVES AND OTHER COUNTRY REGULATIONS AS DESCRIBED IN GS-22-008.
6. THIS PRODUCT IS NOT INTENDED TO BE EXPOSED TO MANUFACTURING SOLDER PROCESSES.



NOTE 1
CONTACT AREA
SECTION K-K
SCALE 40:1

mat'l. code SEE NOTE 1		surface <input checked="" type="checkbox"/> tolerance		projection		product family PV TERMINALS	
ltr	ecn no	dr	date	tolerances unless otherwise specified		title	
J				angles	$.XX \pm .01 / X \pm 3$ $.XXX \pm .005 / XX \pm 13$	C.T.W. MALE PIN LOOSE PIECE	
				0° ±2'	$.XXXX \pm .0020 / XXX \pm .051$	INCH/MM	scale 10:1
		dr	L. SANDERS	1994-11-28		dwg no	sheet 2 of 2 size
		engr	T. HANNA	1994-11-28		48115	A4
		chr	T. BREWBAKER	1994-11-28		type CUSTOMER Drawing	
		appd	T. HANNA	1994-11-28			
sheet index	revision sheet						