



Chipsmall Limited consists of a professional team with an average of over 10 year of expertise in the distribution of electronic components. Based in Hongkong, we have already established firm and mutual-benefit business relationships with customers from,Europe,America and south Asia,supplying obsolete and hard-to-find components to meet their specific needs.

With the principle of “Quality Parts,Customers Priority,Honest Operation,and Considerate Service”,our business mainly focus on the distribution of electronic components. Line cards we deal with include Microchip,ALPS,ROHM,Xilinx,Pulse,ON,Everlight and Freescale. Main products comprise IC,Modules,Potentiometer,IC Socket,Relay,Connector.Our parts cover such applications as commercial,industrial, and automotives areas.

We are looking forward to setting up business relationship with you and hope to provide you with the best service and solution. Let us make a better world for our industry!



Contact us

Tel: +86-755-8981 8866 Fax: +86-755-8427 6832

Email & Skype: info@chipsmall.com Web: www.chipsmall.com

Address: A1208, Overseas Decoration Building, #122 Zhenhua RD., Futian, Shenzhen, China



4840, Cable, Plug, 5.5 mm, 2-pole, DC Plug/Socket



Approvals and Compliances

Description

- pre-assembled cable
- Low Voltage DC Plug and Socket
- DC Plug: 2-pole , angled

Technical Data




Diameter	5.5 mm / 2.1 mm	Allowable Operation Temperature	-20 °C to 70 °C
Number of Poles	2-pole	Terminal	Cable
Ratings DC	0.5 A / 12 VDC	Cord Length	1.8 m
Dielectric Strength	500VDC	Cable Cross Section	2 x 0.3 mm ²
Insulation Resistance	> 100 MΩ @ 500VDC	Style	angled
		Lifetime	5000 Insertions

Approvals and Compliances

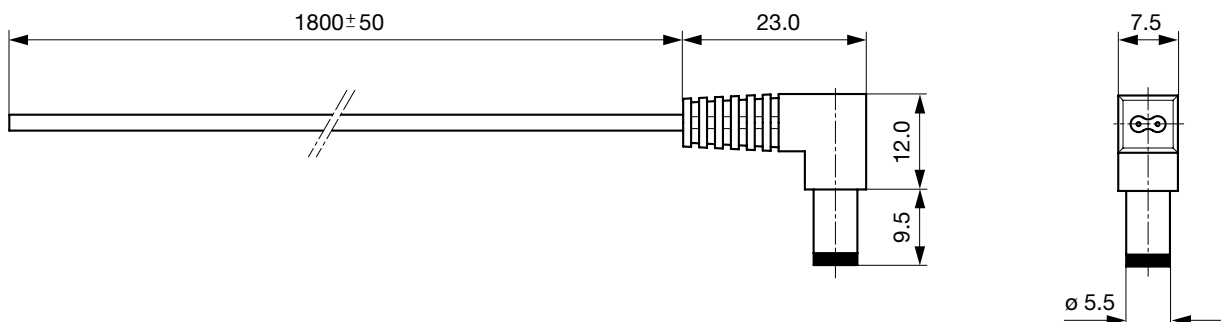
Detailed information on product approvals, code requirements, usage instructions and detailed test conditions can be looked up in [Details about Approvals](#)

Compliances

The product complies with following Guide Lines

Identification	Details	Initiator	Description
	RoHS	SCHURTER AG	EU Directive RoHS 2011/65/EU
	China RoHS	SCHURTER AG	The law SJ / T 11363-2006 (China RoHS) has been in force since 1 March 2007. It is similar to the EU directive RoHS.
	REACH	SCHURTER AG	On 1 June 2007, Regulation (EC) No 1907/2006 on the Registration, Evaluation, Authorization and Restriction of Chemicals 1 (abbreviated as "REACH") entered into force.

Dimensions [mm]



All Variants

Product group	Diameter [mm]	Number of Poles	Terminal	Order Number
DC Plug/Socket	5.5	2-pole	Cable	4840.5201

Most Popular.

Availability for all products can be searched real-time: <https://www.schurter.com/en/Stock-Check/Stock-Check-SCHURTER>

Packaging unit 200 Pcs

Mating Outlets/Connectors

Category / Description



[DC Plug/Socket Overview complete](#)

4840, solder terminal, Socket, 6.3 mm, 2-pole, DC Plug/Socket 4840.2200

4840, PCB terminals, Socket, 6.0 mm, 2-pole, DC Plug/Socket 4840.2201

4840, Cable, Plug, 5.5 mm, 2-pole, DC Plug/Socket 4840.5202

[DC Plug/Socket further types to 4840.5201](#)