



Chipsmall Limited consists of a professional team with an average of over 10 year of expertise in the distribution of electronic components. Based in Hongkong, we have already established firm and mutual-benefit business relationships with customers from,Europe,America and south Asia,supplying obsolete and hard-to-find components to meet their specific needs.

With the principle of "Quality Parts,Customers Priority,Honest Operation,and Considerate Service",our business mainly focus on the distribution of electronic components. Line cards we deal with include Microchip,ALPS,ROHM,Xilinx,Pulse,ON,Everlight and Freescale. Main products comprise IC,Modules,Potentiometer,IC Socket,Relay,Connector.Our parts cover such applications as commercial,industrial, and automotives areas.

We are looking forward to setting up business relationship with you and hope to provide you with the best service and solution. Let us make a better world for our industry!



Contact us

Tel: +86-755-8981 8866 Fax: +86-755-8427 6832

Email & Skype: info@chipsmall.com Web: www.chipsmall.com

Address: A1208, Overseas Decoration Building, #122 Zhenhua RD., Futian, Shenzhen, China



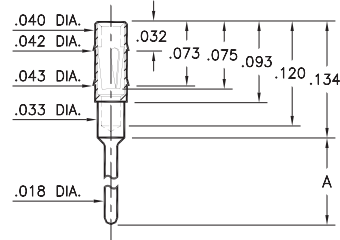
PIN RECEPTACLES

**FOR .015" - .020" DIAMETER PINS (#11 CONTACT)
AND .015" - .022" DIAMETER PINS (#05 & #21 CONTACTS)
(SEE SPECIFIC CONTACT RANGE ON PAGE 251)**

0489

0489-X-15-XX-11-XX-04-0

Press-fit in .041 mounting hole



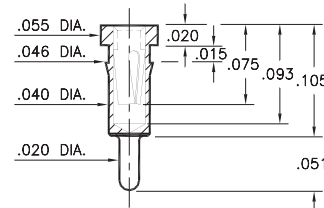
Basic Part Number	Length A
0489-0	.102
0489-1	.199
0489-2	.299

0463

0463-0-15-XX-21-XX-04-0

Press-fit in .043 mounting hole.

Shell is Phosphor Bronze Alloy 544 (B2)

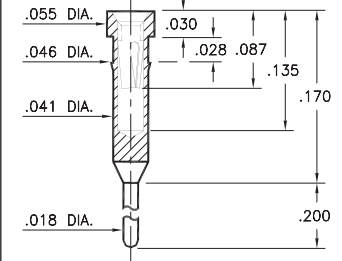


0466

0466-0-15-XX-21-XX-04-0

Press-fit in .043 mounting hole.

Shell is Phosphor Bronze Alloy 544 (B2)

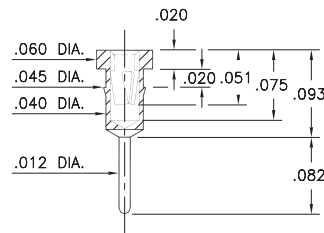


7491

7491-0-15-XX-09-XX-04-0

Press-fit in .042 mounting hole

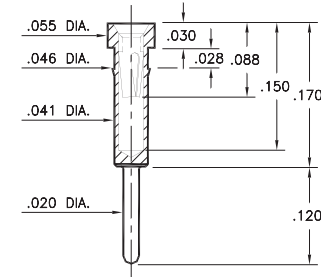
*Contact substitution not recommended



0462

0462-0-15-XX-X1-XX-04-0

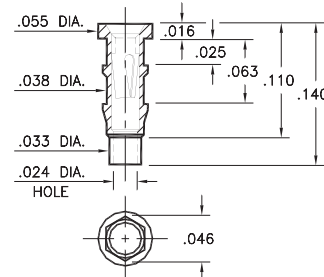
Press-fit in .043 mounting hole



0560

0560-0-15-XX-11-XX-10-0

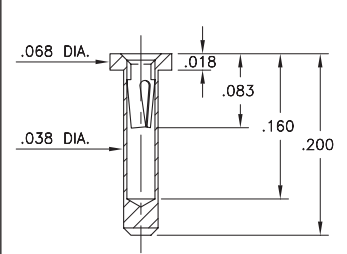
Hex press-fit in .043 plated through-hole



5552

5552-0-15-XX-05-XX-10-0

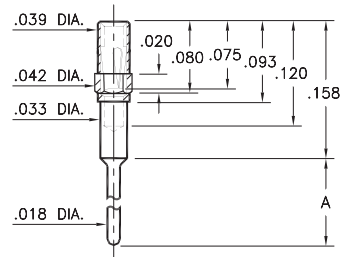
Solder mount in .040 min. mounting hole



4890

4890-X-15-XX-11-XX-04-0

Octagonal press-fit in .041 mounting hole

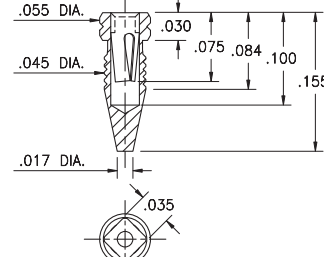


Basic Part Number	Length A
4890-0	.102
4890-1	.199
4890-2	.299

4994

4994-0-15-15-11-27-10-0

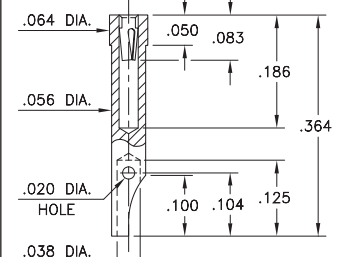
Compliant press-fit in .041 - .044 dia. mounting hole



4485

4485-0-51-XX-21-XX-10-0

Solder mount in .059 min. mounting hole
For wire sizes up to 22 AWG



SPECIFICATIONS:

Shell Material: Brass Alloy 360, 1/2 Hard

Contact Material: Beryllium Copper Alloy 172, HT

Dimensions: Inches

Tolerances On: Lengths: ±.005

Diameters: ±.002

Angles: ±2°



ORDER CODE: XXXX - X - XX - XX - XX - XX - XX - 0

BASIC PART #

SPECIFY SHELL FINISH:

- 01 200 μ" TIN/LEAD OVER NICKEL
- ◆ 80 200 μ" TIN OVER NICKEL (RoHS)
- ◆ 15 10 μ" GOLD OVER NICKEL (RoHS)

SPECIFY CONTACT FINISH:

- 02 100 μ" TIN/LEAD OVER NICKEL
- ◆ 84 100 μ" TIN OVER NICKEL (RoHS)
- ◆ 27 30 μ" GOLD OVER NICKEL (RoHS)

SELECT CONTACT:

#05, #11 or #21 CONTACT (DATA ON PAGE 251)

(For alternate contact choices, see group A on page 248)

