



Chipsmall Limited consists of a professional team with an average of over 10 year of expertise in the distribution of electronic components. Based in Hongkong, we have already established firm and mutual-benefit business relationships with customers from,Europe,America and south Asia,supplying obsolete and hard-to-find components to meet their specific needs.

With the principle of "Quality Parts,Customers Priority,Honest Operation,and Considerate Service",our business mainly focus on the distribution of electronic components. Line cards we deal with include Microchip,ALPS,ROHM,Xilinx,Pulse,ON,Everlight and Freescale. Main products comprise IC,Modules,Potentiometer,IC Socket,Relay,Connector.Our parts cover such applications as commercial,industrial, and automotives areas.

We are looking forward to setting up business relationship with you and hope to provide you with the best service and solution. Let us make a better world for our industry!



## Contact us

Tel: +86-755-8981 8866 Fax: +86-755-8427 6832

Email & Skype: info@chipsmall.com Web: www.chipsmall.com

Address: A1208, Overseas Decoration Building, #122 Zhenhua RD., Futian, Shenzhen, China



# Isolators and Circulators



## 2-26.5 GHz Ferrite Isolators

### Specifications

SMA (F), 2 to 26.5 GHz

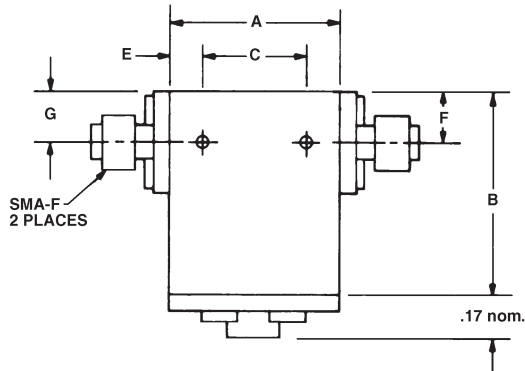
FREQUENCY (GHz)	MODEL	ISOLATION (dB min.)	INSERTION LOSS (dB max.)	VSWR (max.)	PEAK POWER Fwd & Rev (watts)	AVERAGE POWER		TEMPERATURE RANGE (°C)
						Forward (watts)	Reverse* (watts)	
2-4	4913	18	0.5	1.30	50	25	1	0 to +55
4-8	4914	18	0.5	1.30	50	15	1	-20 to +65
7-10	4915	20	0.5	1.25	10	5	1	-20 to +55
8-18	4946	16	0.6	1.45	15	5	1	-20 to +65
11-18	4916	20	0.5	1.25	20	5	1	-20 to +65
18-26.5	4917	17	0.6	1.40	10	3	1	-20 to +65

\* Limited by termination power handling capacity

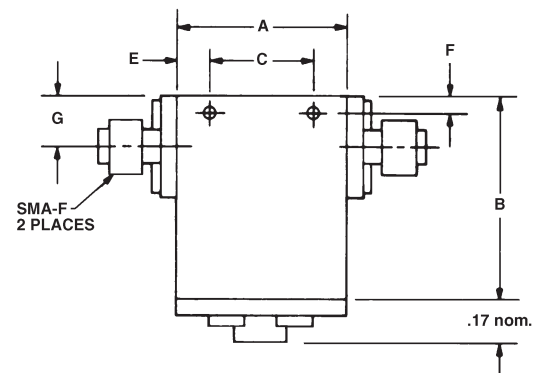


# Isolators and Circulators

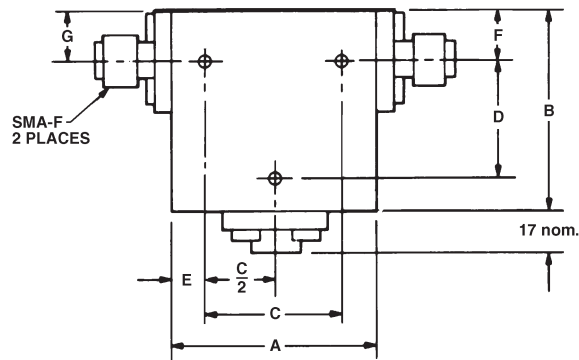
## Outline Drawings



OUTLINE I



OUTLINE II



OUTLINE III

## NOTES:

TOL: .xx ± .02  
.xxx ± .010

\*Mounting holes both sides

a = 2-56 UNC-2B

b = 4-40 UNC-2B

MODEL	OUTLINE DRAWING	MOUNTING DEPTH	HOLE SIZE*	THICKNESS	A	B	C	D	E	F	G
4913	III	.18	b	.75	1.60	1.65	1.000	1.10	.30	.25	.25
4914	III	.15	a	.60	1.00	1.00	.750	1.60	.13	.25	.25
4915	II	.15	a	.50	.50	.63	.375	—	.06	.16	.25
4946	I	.13	a	.55	.63	.80	.500	—	.07	.25	.25
4916	I	.13	a	.55	.63	.80	.500	—	.07	.25	.25
4917	II	.18	a	.50	.50	.66	.380	—	.06	.18	.25

Dimensions in inches, unless otherwise specified.